



GREAT BEND
CHAMBER OF COMMERCE
& ECONOMIC DEVELOPMENT

APRIL 2019 • VOLUME 98 NO. 4

OUTLOOK BUSINESS JOURNAL

A MONTHLY PUBLICATION OF THE GREAT BEND CHAMBER OF COMMERCE AND ECONOMIC DEVELOPMENT

Lucky Number Seven! **7TH ANNUAL GREAT BEND FARM & RANCH EXPO APRIL 10-12**

Celebrating its seventh year, the Great Bend Farm & Ranch Expo is one of the largest farm shows in the United States and will take place at the Expo Complex 2.5 miles west of Great Bend with nearly 700 exhibitors from all over the U.S. and Canada, arriving by planes, trains and automobiles. From April 10-12, 2019 the massive agricultural exposition will draw thousands of spectators and buyers to the Great Bend community, where many will stay in hotels and dine in local restaurants.

Visitors to Great Bend can expect to find friendly faces throughout the Expo, thanks to over 200 volunteers from the business community. From the parking lot to the information desk, to exhibitor hospitality, Great Bend is well represented! Local businesses are encouraged to continue the effort of hospitality and customer service in their stores by including a welcome message on their marquees, equipping staff with community information or simply by ensuring this influx of traffic is greeted with a friendly smile.

In addition to countless exhibits and demonstrations for farmers and ranchers, there are also a number of attractions that will appeal to consumers, homeowners, and the general public so plan to bring the family out to this free event!

Spectators can look forward to daily presentations from K-State speakers on the Expo III stage, Horse Training Demos with JD Wing, Stock Dog Demos, live field demonstrations on nearby test plots and more. Another exciting addition to the 2019 line-up is Dr. Tom Noffsinger, industry expert in cattle handling and animal husbandry, presenting "Low Stress Cattle Handling."

"It's really important that we think about stockmanship being an attitude," Dr. Noffsinger said recently. "The caregiver or whoever is in contact with those animals has a responsibility to know that whatever they do when you're with them is because of you, not them," stated Dr. Noffsinger.

Admission and parking are free to the public. Show hours are 9:00am to 5:00pm on April 10; 9:00am to 7:00pm on April 11; and 9:00am to 4:00pm on April 12. The public is invited to the opening ceremonies on Wednesday, April 10th at 10:30am in Expo III. The Great Bend Chamber of Commerce & Economic Development is proud to be a partner of this annual event. For more information, call 866-685-0989 or visit the show website: www.greatbendfarmandranchexpo.net.



View Schedule of Events:

www.greatbendfarmandranchexpo.net



We'll take care of this...

so you can take care of that!



The technology experts

***Trust us with your
business technology
solutions, so you
can focus on
what matters most.***

Receive a free technology consultation!

Contact us today.

**nex-tech.com/business
800-588-6649**



**THE UNIVERSITY OF
KANSAS HEALTH SYSTEM**

**Committed to
caring for the
Great Bend
community.**

Providing the Great Bend community greater access to the resources of the only academic health center in Kansas. Together, we are committed to ensuring the continued well-being of this community, close to home.

kansashealthsystem.com/community

Job Fest Returns to Great Bend for 12th Year

The 12th Annual Job Fest is slated to take place on April 25, 2019 from 3:00 – 6:00p.m., at the Great Bend Events Center, 3111 10th Street, Great Bend, Kansas. With multiple partnership opportunities available, employers are encouraged to register online to reserve their booth space where they will have the chance to meet with many area job seekers.

Interested employers can now register online at <https://tinyurl.com/y8xef8jy> or by clicking the Sign Up button on their Facebook page at www.facebook.com/GBJobFest.



Businesses can expect to learn more about the job seekers in central Kansas, visit with prospective job seekers and interview on the spot. A Vendors Only Hospitality Suite, sponsored by Great Bend Coffee, will be available with light refreshments. Job seekers are encouraged to bring several copies of their resume as well for employers to review. The KANSASWORKS mobile unit will again be on-site to help those job seekers prepare as needed. Special thanks to this year's Sponsors! PLATINUM Level Sponsors include: ONEOK, City of Great Bend and Barton County. GOLD Level Sponsors include: IBEW Local 661, Redbarn Pet Products, LLC, and the University of Kansas Health Systems.

Returning this year will be The Career Closet, full of gently used business attire for those who are not in a position to purchase new clothes suitable for a job interview. "The Career Closet is an additional incentive for job seekers to attend Job Fest. Last year we had quite a few individuals take advantage of not only the free clothing but also the advice provided by Barton Community College business students who set up and ran the closet," recalls 2019 Job Fest committee co-chair Judy Jacobs.

"It's amazing what just a suit, tie and new pair of shoes does for the confidence of a job seeker. That confidence is one more key in making a successful impression on employers at Job Fest," says Jacobs.

Donations of used, fashionable business attire will be accepted for the Career Closet from April 1st – April 15th at the Main Street location of Farmer's Bank and Trust, 1612 Main St. Great Bend. Please only bring clothing in good condition. Special thanks to Farmer's Bank and Trust for hosting the Closet drop off this year. Donations will be accepted at this location only from 9am-4pm, Monday-Friday.

New, in 2019, those interested in utilizing the Career Closet can now do so prior to the event, allowing them to show up to the Job Fest dressed and ready to impress. The Career Closet will be open April 24th and 25th from 3 – 5 p.m.

Anyone looking for assistance with creating or reviewing his or her resume is encouraged to visit with the KANSASWORKS office at 1125 Main St., Great Bend, (620) 793-5445. For more information on the 2019 Job Fest, visit www.facebook.com/GBJobFest. Send inquiries to Judy Jacobs at jacobsju@bartonccc.edu, (620) 792-9349 or Heidi Brittain at heidi.brittain@ks.gov, 620.793.5445.

About Job Fest

Job Fest is a Central Kansas job fair collaboratively presented by representatives from Great Bend Chamber of Commerce & Economic Development, Barton Community College, Kansas Works and several employers. We focus our efforts on the companies and communities located in and around Barton, Russell, Pawnee, Stafford, Rice, Rush, and Ellsworth Counties. Over the past 12 years, we have worked to grow and streamline this economic development resource to help connect growing businesses with the workforce available to them.

Register Now for FREE Marketing Seminar

The Great Bend Chamber of Commerce & Economic Development invites all members to attend a FREE Marketing Seminar on Wednesday, April 24th at 10:00am, designed to keep you up-to-date on the latest marketing services available to Chamber member businesses. With several new tools rolling out this year, members are encouraged to send at least one team member to get acclimated and stay up-to-date on the free or low-cost marketing opportunities available through the Chamber. Not only will guests enjoy a free breakfast, they will also get hands-on demonstrations for the Chamber's digital directory tools, learn more about the NEW electronic Outlook Business Journals with digital advertising opportunities, and get priority scheduling for Chamber Coffees and After Hours events. Sign up on the Chamber website to reserve your spot: www.greatbend.org.

Update on the GB Better: Visioning 2040 Project

Over the past several months, hundreds of Great Bend residents have been looking ahead and envisioning what Great Bend can be in 2040. Throughout this community-wide process, exciting conversations have taken place and goals have been established.

After many meetings, the Community Visioning Steering Committee has narrowed the goals of our community to this focused list:

- #1** INCREASE THE NUMBER OF **LIVING WAGE JOBS** AND THE **ATTRACTION OF NEW RESIDENTS** BY 2025.
- #2** INCREASE THE **PULL FACTOR** FROM 1.49 TO 1.9 BY 2025.
- #3** DIVERSIFY THE GREAT BEND ECONOMY WITH ONE **ADDITIONAL INDUSTRY** BY 2030.
- #4** INCREASE THE **EDUCATION AND TRAINING** ATTAINMENT LEVEL BY 2030.
- #5** IMPROVE THE **HEALTH AND SAFETY** OF THE COMMUNITY BY 2030.
- #6** ENHANCE **COMMUNITY COHESIVENESS** BY INCREASING THE INCLUSION OF ALL CITIZENS.
- #7** INCREASE THE NUMBER OF QUALITY, AFFORDABLE **HOUSING** UNITS FOR A RANGE OF INCOMES.
- #8** REDUCE THE PERCENTAGE OF POPULATION LIVING BELOW THE **POVERTY LEVEL**.
- #9** ENHANCE THE QUALITY OF **TRANSPORTATION SERVICES AND INFRASTRUCTURE SYSTEMS** FOR ECONOMIC BENEFIT AND IMPROVED QUALITY OF LIFE.
- #10** CONTINUE TO BE **INNOVATIVE AND CREATIVE** WITH COMMUNITY PROJECTS, EVENTS, BUSINESS OPPORTUNITIES, PUBLIC SPACES, AND TECHNOLOGY.

At the 97th Annual Banquet held in February, attendees were able to vote on what they considered to be the most important goal. The goal receiving the most votes was, "Diversify the Great Bend economy with one additional industry by 2030."

Next up, the steering committee will begin to dig into each goal, giving them the individual attention they need. Looking ahead, community members will be invited to participate on a committee that strategizes ways to meet these goals. Dates are yet to be scheduled.

Great Bend – Better Than Great will release a completed strategic plan on July 1, 2019. To stay updated on this process, visit www.GBBetter.com and connect on Facebook.



www.gbbetter.com

Outlook Business Journal

A monthly publication of the

GREAT BEND
CHAMBER OF COMMERCE
& ECONOMIC DEVELOPMENT

1125 Williams,
Great Bend, KS 67530
Phone: 620-792-2401
Fax: 620-792-2404

Web address: www.greatbend.org

EXECUTIVE COMMITTEE

Chairman

AJ Chrest, Aflac District Coordinator

2nd Vice Chair

Pete Wesner, CUNA Mutual Retirement Solutions

Immediate Past Chair

Taylor Calcara, Watkins Calcara Chtd.

Treasurer

Austin Coyn, Adams Brown Beran & Ball

BOARD OF DIRECTORS

Glenna Achatz

Coldwell Banker Sell Real Estate

Haley Acker

Fuller Industries / Barton County Young Professionals

Todd Armatys

Edward Jones

Rob Bauer

Bauer, Pike, Bauer, Wary & Carroll, LLC

Gaila Demel

United Way of Central Kansas

Logan Garrett

G-B Tire, Inc.

Casey Harbour

Watco Companies

Diann Henderson

Great Bend Recreation Commission

Julie Kramp

The Center for Counseling

Teresa Mazouch

Golden Belt Community Foundation

Troy McFarren

Haz-Mat Response

Shelly Peacock

TCI Answering Service

Jon Prescott

Sunflower Diversified Services

Jerry Renk

American State Bank

Lacey Schofield

Best Western Angus Inn

Julie Spray

The Fieldhouse

Rick Taylor

Nex-Tech, Inc.

Curtis Wolf

Kansas Wetlands Education Center / Ambassador Club

EX-OFFICIO

Chad Somers, Great Bend City Council

Christina Hayes, Great Bend CVB

Jennifer Schartz, Barton County Commission

Dr. Carl Heilman, Barton Community College

Khris Thexton, USD #428

Tory Arnberger, Kansas State Legislature

CHAMBER STAFF

Jan Peters, President/CEO

Laura Blankenship, Business Development Director

Megan Barfield, Member Relations Director

Kim Son, Business Manager

FREE E-WASTE RECYCLING



Does your *residence* or *business* have *electronics* in need of *safe and responsible recycling*?

Computers & Monitors
Printers
Fax Machines
Laptops
Televisions
Video Game Consoles
DVD Players
VCR's & Cameras
Cell Phones
Telephone Equipment
...and More!

DROP-OFF LOCATIONS

Rosewood
Maintenance Building
2200 Main St., Great Bend
Mon - Fri, 9:00 am - 4:00 pm
Rosewood Bargain Barn
1215 Main St., Great Bend
Mon - Fri, 10:00 am - 6:00 pm

The Mission of Rosewood ecycle is to provide work-related training and employment opportunities to adults with developmental disabilities.

By recycling with us, you benefit your community, the environment, and you help create jobs for individuals with developmental disabilities.

You will receive a tax deduction receipt when you drop off unwanted electronics.

Rosewood ecycle
2200 Main St.
Great Bend
South of the Dairy Queen!



CONTACT INFORMATION
(620) 603-8348
www.RosewoodServices.com

Docking Institute Verifies ROI on Taxes to BCC

Barton Community College has been providing affordable and accessible higher education to Barton County for almost 50 years, and the question of what exactly taxpayers are getting for their money comes up every year at tax time. The college's Institutional Effectiveness Department has attempted to make the return on investment easy to understand and as simple as one number. The answer they have provided is for every \$1 in taxes, Barton County residents enjoy a return of \$2.76 injected into the local economy.

Here is a breakdown of the math:

Barton Community College received \$8,083,163 in property taxes from Barton County.

1. The college spent \$7,053,455 in Barton County.
2. Employees living in Barton County were paid \$12,652,375 in wages.
3. Students living in Barton County spent \$2,630,880.

Total Direct Economic impact was \$22,336,880. (Items 1-3 added together.)

The \$8,083,163 in taxes the college collected in 2017 resulted in the circulation of \$22,336,880. The latter divided by the former generates the rate of return of 276 percent. For every dollar in taxes, Barton County's economy sees \$2.76.

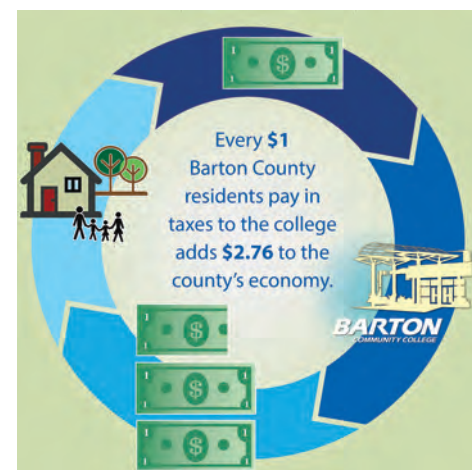
One might wonder how the college is able to spend more than what it received in local property taxes. The answer is that property taxes are less than a third of the college's total revenue, at about 27.2 percent. About 41 percent comes from student tuition and fees. Another 26.4 percent comes from state aid, with grants and other sources making up the last 5 percent. The 27.2 percent of the revenue from taxpayers makes possible the other 72.8 percent of revenue, much of which is spent locally and contributes to the high return on investment.

The college's personnel chose to be extremely conservative with their estimates, only calculating the direct economic impact of the college's operations. Typically, economic impact studies concerned with geographic areas the size of counties use multipliers ranging from 1.9 to 3.0. This is to estimate the indirect impact of the college, like the socioeconomic benefits of having a higher education institution in the county, other spending that occurs as a result of the college's presence, a more skilled labor pool to support industry and more.

A conservative multiplier of 1.9 would yield a benefit to Barton County of \$42,440,072, or \$5.25 for every tax dollar collected by the college.

The study was conducted by Barton's Institutional Research staff, and was corroborated and certified by the Docking Institute through Fort Hays State University, which said the report is acceptable. The public can view the Docking Institute's response and verification at bartonccc.edu/economic-impact.

BARTON
COMMUNITY COLLEGE



Catholic Charities Hosts 17th Annual Wine Tasting

The 18th Annual Catholic Charities Wine Tasting Event will be held on Friday, May 3, 2019, from 7:00 to 10:00 p.m. at the Great Bend Event Center, 3111 10th Street in Great Bend KS. Admission is \$50 per person or \$450 for a table of ten. The evening features a broad selection of wines, craft beers and spirits from around the world, delicious hors d'oeuvres prepared by The Club at Stone Ridge, live entertainment by Classical Guitarist, Richard J. Falcon Jr. and a large silent auction of interesting and creative items. A live auction kicks off with our auctioneer for the evening, T.R. Esfeld, at 8:00 p.m. **See more information on the mail panel included with this issue.**

**\$79 A/C
TUNE-UP**

*SOME TERMS & CONDITIONS APPLY

**WE SERVICE
ALL BRANDS
OF HVAC
SYSTEMS.**

ASK ABOUT OUR PLATINUM
PLAN TO SAVE 10% ON PARTS
ALL YEAR ROUND!



ComfortPro Inc.

CALL TODAY 800-937-3030

HIGHLIGHTED EVENTS IN APRIL

- 1... Central Kansas Community Choir and Concert Choir Concert, First Christian Church, 5230 Broadway @7:30pm
- 2... Barton County Conservation District Work Group Meeting, American AgCredit, 5634 10th St @9:30am
- 2... Movies with a Message: The Long Walk Home, Dominican Sisters of Peace, 3600 Broadway Ave @6:15pm
- 4... **Chamber Ribbon Cutting: Anytime Fitness, 3721 10th St. @9am**
- 4... **Chamber Coffee: Great Bend Public Library, 1409 Williams St @9:30am**
- 4... **Chamber Connect on KVGB 1590AM or 97.7FM @11:30am**
- 4... Historical Society Volunteer Orientation, 85 S. Hwy 281 @ 1:30pm – 3:30
- 5... Great Bend Free Shred Day, Landmark National Bank, 5200 Broadway Ave. @11am
- 5... Open Mic Night, A440 Music, 1207 Main St. @6pm
- 5... Adult's Night Out Movie, Great Bend Public Library, 1409 Williams St. @7pm
- 5-7... Permaculture Certified Course, Heartland Farm, 1049 CR 390 Pawnee Rock @8am – 5pm
- 5-6... Empowered to Connect Conference, Community Christian Church, 253 NE 30 Rd @9am – 5pm
- 6... Reduced Cost Lab Fair, Ellinwood Hospital and Clinic, 611 N Main St @7am – 9am
- 6... 5k for Kids, Brit Spaugh Park, Great Bend @9am
- 7... Family Day, Shafer Gallery, 245 NE 30 Rd @2pm
- 7... Caregivers Count Support Group, First Christian Church, 5230 Broadway Ave @2pm – 4pm
- 9... UWCK Dine for Dolly, Freddy's, 3008 10th St., All Day
- 9... Sunflower Diversified Developmental Fair, Public Library, 1409 Williams St. @3:30pm
- 9... Golden Belt Community Concert: Brassfire, Great Bend Municipal Auditorium, Lakin & Stone @ 7:30pm
- 10... **Great Bend Farm & Ranch Expo Opening Ceremonies, Expo III @10:30am**
- 11... Barton Orchestra Concert, Shafer Gallery, 245 NE 30 Rd @7:30pm
- 13... Reduced Cost Lab Fair, Ellinwood Hospital and Clinic, 611 N Main St @7am – 9am
- 13... Biosphere Blockparty, Kansas Wetlands Education Center, 592 NE K156 HWY @9am
- 14... Barton Foundation Sporting Clay Shoot Fundraiser, Camp Aldrich, 884 NE 110 Ave. @9am
- 15... Friends of the Library Annual Meeting, Great Bend Public Library, 1409 Williams St. @6pm
- 16... Central KS Partnership Meeting, Barton County Health Department, 1300 Kansas Ave #B @11am
- 18... **Chamber Coffee: Pilot Club, Chamber Board Room, 1125 Williams St @9:30am**
- 18... Family Fun Festival & Red Shoe Too!, Jack Kilby Square @5pm – 8pm
- 19... Chamber Office Closed for Good Friday
- 19... Open Mic Night, A440 Music, 1207 Main St. @6pm
- 24... **Member Services & Marketing Seminar, Chamber Board Room, 1125 Williams @10am**
- 25... Almost Home's Ask the Expert, KVGB 1590 @8:35am
- 25... **Chamber Coffee: Golden Belt Bicycle Company, 1111 Main St @9:30am**
- 25... **Job Fest, Great Bend Events Center, 3111 10th St @ 3pm – 6pm**
- 26... Center for Counseling: Mental Health First Aid, 1225 Patton @8am – 5pm
- 26... Annual Barton Booster Club Golf Tournament, Stoneridge Country Club @1pm
- 27... The University of Kansas Health System Lab Fair, Great Bend Campus, 514 Cleveland St @ 6am – 9am
- 27... Open Farm Day, Heartland Farm, 1049 CR 390 Pawnee Rock @ 9am – 4pm
- 27... Anytime Fitness Open House, 3721 10th St. @Noon
- 30... Movies with a Message: Summer in the Forest, Dominican Sisters of Peace, 3600 Broadway Ave @6:15pm
- 30... Barton Dance Spring Concert, Fine Arts Auditorium, 245 NE 30 Rd @7pm

Recurring Events:

Great Bend City Council Meetings, 1st & 3rd Mondays, City Hall, 1209 Williams @6:30pm
 Barton County Commission Meetings, Every Monday, Courthouse, 1400 Main @9am

April 10-12: Great Bend Farm & Ranch Expo, Expo Complex, Free Parking & Free Admission

Please join us for one of the largest farm shows in the United States. Special thanks to the Corporate Sponsors: KSN, Great Bend CO-OP, American Hat Company Inc., and Fenoglio Boot Co.

Show Hours: Wednesday 9am to 5pm | Thursday 9am to 5pm | Friday 9am to 4pm

See more community events, or post one of your own, by visiting our website:

www.greatbend.org

Great Bend Community Economic Outlook Event

**May 10, 2019
8:00am – 10:00am**

Great Bend Chamber of Commerce &
 Economic Development Office
 1125 Williams in Great Bend, KS

The Great Bend Chamber of Commerce & Economic Development would like to invite the business community to an upcoming Community Outlook Event on May 10, 2019. The purpose of this event is to convene a group of business and community leaders to talk about relevant economic issues that will impact local businesses and communities. More specifically, Jeremy Hill, director of the Center for Economic Development and Business Research at Wichita State University, will talk about the current economic conditions, economic drivers for the state and regional economies, and general expectations over the coming months. Topics to be included are labor demand, costs, and wages. A local presenter will provide an in-depth analysis of the local economy, with assistance from CEDBR.

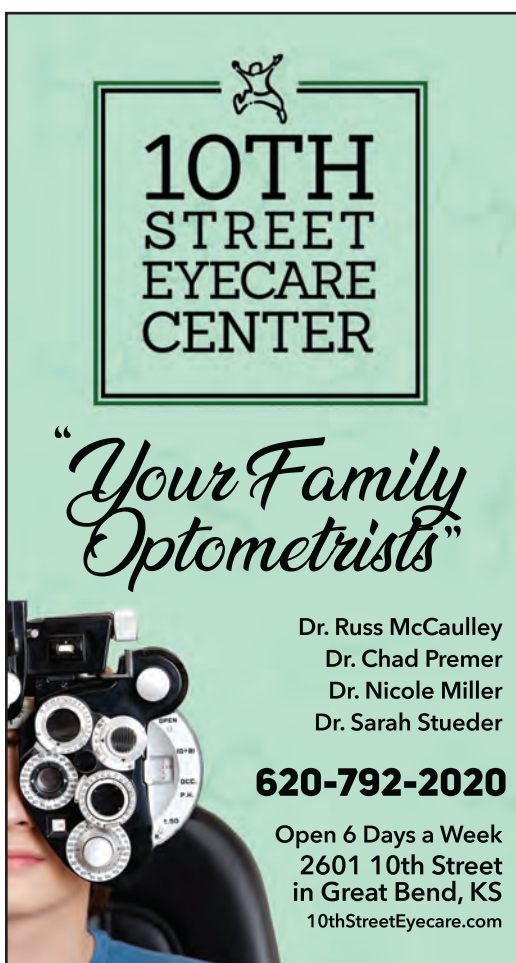
Registration is \$50. Learn more and register online: www.cedbr.org

OPI to Host Chamber Business After Hours for 60th Anniversary

**May 9, 2019
5:00 – 7:00pm**

Alley Located Behind OPI
 12th & Main in Great Bend, KS

Office Products, Inc will host a special Chamber After Hours event on Thursday, May 9th to celebrate their 60th Anniversary in business! All Chamber members are invited to the free event, where you can enjoy delicious food, door prize drawings, and networking opportunities with other members of the community. Brothers Kenny, Terry, and Craig Vink will provide a brief program at 6:00pm honoring the legacy started by their father, Melvin Vink more than 60 years ago. Door prize drawings will follow. No RSVP's are required to attend.



10TH STREET EYECARE CENTER

"Your Family Optometrists"

Dr. Russ McCaulley
Dr. Chad Premer
Dr. Nicole Miller
Dr. Sarah Stueder

620-792-2020

Open 6 Days a Week
2601 10th Street
in Great Bend, KS
10thStreetEyecare.com



- Indoor Pool & Hot Tub
- Fitness Center
- Business Center
- Free Wi-Fi
- Free Netflix
- Mini Fridge, Coffee Maker, Microwave & Iron in Each Room
- Two Restaurants & Bar On Site
- Indoor Courtyard, Perfect for hosting reunions, parties & vendor shows!



Best Western.

GREAT BEND, KANSAS
2920 10th Street • (620) 792-3541
Take a virtual tour at bwangus.com!
620-792-3541

City Requests Information on June Jaunt Events

Summer is right around the corner and we can't wait for this year's June Jaunt! Plans are being finalized for this year's events and we want to make sure you are included. If you are interested in being a part of the schedule of events, please send your information by April 5th. We can't wait for the fun!

- **Community Coordinator Christina Hayes**
620-793-4111 / chayes@greatbendks.net



Heartland Farm to Host Open Farm Day Apr. 27

Come out to the Farm and join us on Saturday, April 27th, to celebrate Earth Day and the Dominican Sisters of Peace 10 Year Anniversary. The day will be filled with fun, activity and farm animals! There will be farm tours every hour, games, baked goods, demos and more. The event is free, and we hope everyone can make it. We will have gift shop items and baked goods for sale, as well as opportunities to support the farm and its longevity. We hope to see you there!

Heartland Farm is located at 1049 CR 390, Pawnee Rock, KS, 67567, which is just outside of Great Bend. Drive 14 miles west on 10th St. to Barton Country Rd. Once you hit the dirt road, W. Barton Country Rd., take the first left at the stop sign on CR 390. Drive about a quarter of a mile South and we're the first farm on the right.

ALL DAY EVENTS:

- Farm Tours on the Hour
- Meet and Greet with the Alpacas
- Face Painting
- Kids Gunny Sac Races
- Natural Beauty Product Making Demos
- See the Baby Chicks

SCHEDULED EVENTS:

- Composting Demo: 10:30am
- Fiber Spinning Demo: 11am & 3pm
- Showing the Labyrinth: 11:30am & 2:30pm
- Honoring 10 years as Dominican Sisters of Peace & Planting a Peach Tree: 1pm



The Center for Counseling Offers Mental Health First Aid Training in Great Bend Apr. 26

On Friday, April 26th, The Center For Counseling will be offering Mental Health First Aid training in Great Bend. This groundbreaking eight-hour training course gives people the tools to identify when someone might be struggling with a mental health or substance use problem and to connect them with appropriate support and resources when necessary.

One in five Americans has a mental illness, but many are reluctant to seek help or might not know where to turn for care. Unlike physical conditions, symptoms of mental health and substance use problems can be difficult to detect. For friends and family members, it can be hard to know when and how to step in. As a result, those in need of mental health services often do not get them until it is too late.

Just as CPR helps even those without clinical training assist an individual having a heart attack, Mental Health First Aid prepares participants to interact with a person experiencing a mental health crisis. Mental Health First Aiders learn a 5-step action plan that guides them through the process of reaching out and offering appropriate support. "Through this program, we hope to take the fear and hesitation out of starting conversations about mental health and substance use problems," says Linda Rosenberg President and CEO of the National Council for Behavioral Health, which helped bring Mental Health First Aid to the U.S. in 2008.

Become a part of the movement to improve Mental Health response in Great Bend. For more information or to participate in a Mental Health First Aid training in Great Bend, contact Kristian Pearson at 620.603.6879 or email him at kristianp@thecentergb.org.

Local Athlete to Represent Great Bend on International Soccer Team

Great Bend Mexican restaurant, Playa Azul, and owner, Rodrigo Razo, is excited to announce that one of their own, Angel Razo, has been invited to represent Great Bend, KS as a finalist for the 2019 SuperClubs National Team. Soccer Excellence and SuperClubs International welcomes Razo to the National All Stars and will travel to Italy in the summer of 2019 to play the top youth professional Academy teams. This tremendous honor is only achieved by the most elite players that American youth soccer has to offer. Angel, a Great Bend High School Freshman, was selected for the 2019 SuperClubs National Team because of his soccer skills, leadership qualities and passion for the game. This is a fantastic opportunity for players to gain the experience of playing under college coaches in preparation for later on in their careers.

To be expected, there are a lot of expenses associated with this trip including lodgings, food and travel. SuperClubs will fund a portion of the trip the remaining balance being funded by the families and sponsoring businesses. Local businesses are invited to contact Rodrigo Razo to learn more about helping sponsoring Angel and this opportunity of a lifetime. Donations are also being accepted. Contact Rodrigo Razo at (620) 282-9272 to learn more.

Office Products Inc. is Once Again Offering Tailor-Made Computers



For several years, the computer guys at Office Products Inc. (OPI) built computers to customers' specifications. However, due to economics and other factors, they discontinued the service a few years ago. But now it has come full circle. Even though OPI will order

brand names for customers, the company is once again building tailor-made computers.

"We built them here for about 10 years," said Steve Black, service IT technician. "Then we learned that it was more economical to order from a vendor. But now that has changed again. It is often less expensive for customers if we build our own. 'In addition, we can control the quality of the parts we use. We can't control the quality of a machine we order.'"

The added bonus is the OPI computer can be up and running in a home or office the next day. "In some cases," Black noted, "we have an OPI-built machine in stock; if we don't, we can build one quickly. When we order from a vendor, the customer might have to wait two or three weeks. No one can afford to wait that long if a computer goes down. With an OPI-built computer, the customer can have a replacement quickly at a comparable price."

Drake Toll, another service IT technician, noted that the beauty of an OPI machine is flexibility. When customers show interest in an OPI machine, the technicians ask what it will be used for and what the customer expects.

For more information, contact the technicians by calling 620-793-8479. OPI is located at 1204 Main in Great Bend; 516 Broadway in Larned; and 724 N. Main in Russell.

Miller and Straub Families Observe Almost Home's Fifth Anniversary

A few years ago, Glenn Miller of Great Bend wouldn't eat or even try to take care of himself. The situation had to change, and thanks to Almost Home Inc., it did, said Julie Straub, Miller's daughter. Julie and her husband, Larry Straub, wanted to share their family's story in observance of Almost Home's fifth anniversary. The adult



residential-living home, 1919 Van Buren, opened March 17, 2014. "We were really in a pretty tough spot," Julie recalled. "We lost Mom several years earlier and Dad did pretty well for a while. Then he started going backwards. And when that happens, things escalate."

"Our family and Dad's doctors agreed that he couldn't live on his own anymore," she continued. "We had been told he might not live for another six months. But here we are, three years later. Dad loves it here and we feel the same way."

Larry acknowledged that his father-in-law "fought the move early on. But then he turned a corner. During a hospital stay, Miller asked 'they are not going to give my room away at Almost Home, are they?'"

"Now he is Almost Home's biggest salesman," Larry added. "He just loves everyone here. They are very big into quality of life, and if something goes wrong, the staff picks up on it quickly."

Miller, 88, who co-owned and helped operate Miller Printing for more than five decades, has been a full-time Almost Home resident for three years. The best things about it, he said, are "this is my hometown and everyone takes good care of me. It's kind of like a second family. I am very happy with my treatment. If I wasn't happy, I wouldn't be here. The food is good too. Let's put it this way; when I came here I weighed less," he laughed, patting his tummy.

Three home-cooked meals, which include made-to-order breakfasts, are just part of the daily services at Almost Home, said Executive Director Leilani Schenkel, RN. Others are adult daycare, respite and end-of-life care. The 24-hour staff includes registered nurses, certified nurse's aides and certified medication aides.

"All of us are gratified that we have far exceeded expectations during our first five years," Schenkel said. "I didn't think we would have full occupancy for a few years. But we have been full many times - even during the first year. We appreciate all the great community support and generous donors to our non-profit residence."

Almost Home is licensed for a maximum of 10 residents. Two rooms are designated for end-of-life care. It also may accommodate an additional two people for several hours of adult daycare on any given day. Despite its success, Schenkel is aware of a couple of misconceptions about Almost Home. "Some families believe we are a lot more expensive than traditional long- and short-term-care options," she noted. "I have heard that people are even reluctant to call because of this. But our prices are very competitive."

Additions since the facility opened five years ago include the Retreat House for families who need privacy. Others are the sunlit solarium, and new gardens and landscaping. For more information, contact Schenkel by calling 620-617-1634.

AMC 620-792-1265
Animal Medical Center



HEARTWORM AWARENESS MONTH

\$5 OFF

Heartworm tests
*ProHeart injections
Fecal exams

COMBINE & SAVE \$15

Purchase of Prevention is required
* Manufacturer Discount

GREAT BEND FARM & RANCH EXPO 8TH ANNUAL



April 10-12, 2019

www.greatbendfarmandranchexpo.net

April 10th 9 a.m. to 5 p.m.

April 11th 9 a.m. to 7 p.m.

April 12th 9 a.m. to 4 p.m.

**Reserve your exhibitor
space today!**



Have it Maid Cleaning Service Has New Owners

Have it Maid Cleaning Service recently announced that it had undergone an acquisition. Below is a copy of the announcement they distributed to their customers last month:

"We have some BIG news to share, and a couple other announcements as well. As you may know, our business is still in its infancy, having launched for the first time in November 2017. We have grown a LOT since then, learning from our mistakes and finding new ways to innovate and improve our processes along the way.

As you also may know, our original owner was Rachel Mawhirter, and she and her husband own two other businesses outside of Have it Maid - a design and brand management firm called Marketing Maven and a construction company called Just In Time Remodeling. They also have two young kids in preschool and elementary school. When they started the business, it was designed to provide a new opportunity for the manager at the time so that she could eventually take it over. But last October, new doors opened for that individual and she chose a different path. Since then,

we've had the opportunity and privilege to dive into the business model and make improvements to the way we handle scheduling, staffing, training, supplies, billing, and more. It's been a delight to hear feedback from our customers, many of whom offer great suggestions and insight into how our business can serve them better.

Now that we are confident that the business is thriving and our customer base is growing, Rachel and her husband have other priorities keeping them from giving our Have it Maid customers the attention they deserve. So it is with much excitement that we would like to announce that as of March 1, 2019 the company will have new ownership! Jeremy and Kim Elliott, owners of myLawn! Turf & Tree will be taking over the operation of Have it Maid Cleaning Service. We couldn't be more thrilled to find such visionary entrepreneurs with a passion for serving others. After months of learning and researching and developing new ideas, this amazing young couple will be taking the reins and bringing some fresh perspective and enthusiasm to this business that serves so many homeowners and commercial properties in our area.

"I could not be any more confident in Kim and Jeremy and their ability to serve our customers with humility and respect. There aren't very many people I would trust to love and care for our clients the way that we have tried to do, but these two really 'get it' when it comes to customer service, communication, and servant hearted leadership. I am so excited to see the growth they will inevitably experience by bringing their innovative ideas to this business, and want to wish them the best of luck in this new endeavor!" - **Rachel Mawhirter, Have it Maid Founder**

"We have been watching this business from afar, and completely understand the demand for a company that can help busy people delegate their chores to someone else. As customers, we enjoy the freedom and flexibility it gives us to spend our limited free time with our family and our friends instead of doing routine cleaning. Now, stepping into a leadership role, we will be building on the successes this business has already seen, while improving some of the operational details that will bring more value to the clients and provide even better service." - **Kim Elliott, New Owner**

We are all very excited for this transition, and we are working hard to make sure it will be a smooth one. Thank you for your trust, and your business! Please don't hesitate to reach out if you have any additional questions or concerns, and be sure to watch our Facebook page for exciting things to come! For more information or to get in touch with the new owners, visit www.haveitmaidcleaningservice.com, or call/text their business line: 620-805-3095.



Julie Carroll Joins Local Law Firm as Partner

Bauer, Pike, Bauer, Wary & Carroll, LLC is pleased to announce the addition of Julie A. Carroll as a partner in the local law firm.

Mrs. Carroll graduated from Kansas State University with a Bachelor's Degree in Psychology. She then graduated from the University of Kansas School of Law and was admitted to the Kansas Bar in 1999. She has lived and practiced in Great Bend since 2000.

Julie has extensive experience in all aspects of domestic law. She also has an abundance of experience in criminal law, having prosecuted criminal offenses as an Assistant Attorney General for the Kansas Bureau of Investigation for eleven years. Julie also practices in general civil litigation, probate, and real estate matters.

Outside of work, she has been a Big Brothers Big Sisters volunteer and is currently serving as the Vice President of the Cedar Park Place board of directors. She and her family live in Great Bend. Learn more by visiting www.bauerpikelaw.com.



Two Local Insurance Agencies Earn Recognition

The Farmers Alliance Companies in McPherson, Kansas have announced that Alliance Insurance and Keller Real Estate & Insurance Agency, both located in Great Bend, have been named FARMERS ALLIANCE ADVANTAGE AGENTS for 2019.

To qualify as an ADVANTAGE AGENT, an agency must exhibit superior professionalism and profitability over five consecutive years. ADVANTAGE AGENTS are recognized by Farmers Alliance as the "best of the best".

To reach this level of distinction is a reflection of this agency's commitment to their customers and their community. The Farmers Alliance Companies are represented by independent agents, and serve eight states. Farmers Alliance was established in 1888 and writes a full range of property and liability insurance for homes, farms and commercial businesses.



TLC Pet Salon Welcomes Doyle to Grooming Team

TLC Pet Salon is excited to announce the addition of Crystal Doyle to the team, as a new groomer in training, under the supervision of TLC Pet Salon owner, Lori Felsburg. Crystal is currently taking appointments for pet grooms and Bath, Brush, and Nails.

Other exciting things are also happening in an effort to better serve our clients and their furry loved ones! The installation of surveillance cameras now allows the staff to watch over the pets in their care during boarding. Night or day. Does your pet get anxious during boarding?

As an added bonus, thanks to the new technology, Lori and staff can also interact with the pets and talk to them in hopes of calming those nerves. TLC Pet Salon is located at 2232 10th St. and can be reached by calling (620) 617-6066.



Lab Fairs Combined at University of Kansas Health System

Two local lab fairs provided by The University of Kansas Health System Great Bend Campus have been combined into one, but the services and affordable prices remain the same. The monthly fair is available at Great Bend Campus. The health system's St. Rose Medical Pavilion no longer hosts a lab fair.

"We offer a comprehensive list of lab services at a greatly reduced cost," said Raylette Schlochtermeyer, lab supervisor. "This is not a for-profit service. We offer it as a convenience to the public."

"We have a great professional staff here at Great Bend Campus," she said. "Staff members from the hospital and St. Rose Medical Pavilion have teamed up to make this event happen."

The monthly lab fairs are scheduled from 6-9 a.m. one Saturday each month. Dates for the rest of the year are April 27, May 18, June 22, July 27, Aug. 24, Sept. 28, Oct. 26, Nov. 23 and Dec. 28.

No appointment is necessary. Participants should enter through the doors labeled "Imaging - X-ray - Lab" at the southwest corner of the hospital. Blood test results are mailed to patients. Participants may share the results with their physicians if they choose. "Some people like to keep track of their lab numbers on their own and some like to seek interpretation from their doctors," Schlochtermeyer said. "We provide a reference guide to everyone so they can determine if their lab numbers are in acceptable ranges. If we notice any critical abnormalities, we contact people and encourage them to report the results to their doctors."

Fasting for eight hours prior to testing is recommended. Only cash and checks are accepted. No insurance claims will be filed. Zena Jacobs, clinical director of ambulatory and outpatient operations, noted, "We carefully weighed our options when discussing the possibility of lab-fair consolidation. As an organization, we decided it was yet another way to bring our services together and still provide the same great care."

EXPLORE GREATBENDREC



GET ACTIVE!

Cavanaugh Wellness contains PreCore & Life Fitness Cardio & Strength equipment.

Come check out the Treadmills, Elliptical Cross Trainers, Recumbent Bikes, and 10 Strength Stations!



GREAT BEND : Rec

Great Bend Rec
1214 Stone Street
620.793.3755
www.greatbendrec.com
facebook.com/greatbendrec

Helping Seniors Live Well & Age Well in Great Bend

Those who attended Almost Home's recent Great Bend Chamber of Commerce ribbon cutting, which observed their 5th Anniversary, learned about the residences' HOMEplus services and the additions since opening 5-years-ago.

Additions include the Retreat House for families who need privacy. Others are the sunlit solarium, and new gardens and landscaping.

Social media sites were also buzzing with information and giveaways from local businesses during the anniversary month.

"It is wonderful to be surrounded by a community that supports us, our mission and the amazing staff who make it possible to provide residents with all the comforts of HOMEplus quality care to live well and age well! Thank you for helping Almost Home celebrate 5 years!"
-Leilani Shenkel, Scott Shenkel and the staff of Almost Home.



GBCF Welcomes Mazouch, New Program Officer

Golden Belt Community Foundation Executive Director, Christy Tustin, recently announced the hiring of Teresa Mazouch as Program Officer.

As Program Officer of the GBCF, Teresa is responsible for all program work of the community foundation. The position focuses on building relationships with non-profit agencies in Barton, Pawnee, Rush, and Stafford counties and partnering with them to help achieve their missions.

Due to the accelerated growth, the foundation has seen an increase in the amount of funds available for distribution each year. In addition, the Foundation has become proactive in its grantmaking and strategic planning. Teresa will work closely with other staff and the Executive Director to guide the distribution process to ensure funds are thoughtfully, fairly and equitably distributed.

Teresa, a native of Great Bend, has worked in the utility business for the past 8 years. She most recently worked as the Member Services and Key Accounts manager for Wheatland Electric. She is a member of the Holy Family Parish in Great Bend, where she attends with her 3 children, Josephine, Meredith and Norah. Her girls attend Holy Family school and stay very active with the many extracurricular activities they participate in. Teresa looks forward to incorporating her commitment to serving the community and her love of helping others with her focus on the many opportunities provided by Golden Belt Community Foundation.



Golden Belt Community Foundation

At over \$22 million in total assets and more than 184 funds under management, the Golden Belt Community Foundation has been connecting people who care to causes that matter since 1996. Golden Belt Community Foundation exists to provide non-profit organizations in central Kansas with a permanent source of support and to serve as a vehicle for charitable giving for donors. GBCF serves the counties of Barton, Pawnee, Rush, and Stafford. For more information about Golden Belt Community Foundation, call (620) 792-3000 or visit their website at www.goldenbeltcf.org.

3 Reasons to Hire The HR Pro



You have employees but can't afford your own Human Resources department.



Your company needs assistance tackling a special Human Resources project.



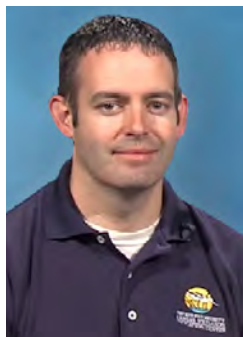
Your H.R. department needs a boost from a seasoned industry expert.



Erika Brining
SPHR & SHRM-SCP
620-793-0985



Ambassador Profile - Curtis Wolf, KWEC



What brought you to Great Bend? What keeps you here?

I first moved to Great Bend from Hays, when I took a job as a Biology Instructor at Barton Community College. I then took the job at the Kansas Wetlands Education Center when it opened. I later moved to Ellinwood. I like central Kansas and hope to stay here for my entire career. Cheyenne Bottoms is a huge sticking point for me and is a dream location for a biologist.

Where do you work and what do you do there?

As director at the Kansas Wetlands Education Center, I am responsible for the daily operation of the facility. With a small staff, most of us are involved with many aspects of the Center.

However, I supervise the three FHSU employees and four FHSU graduate students that work here. I also am responsible for the budget and other administrative duties of the Center. I most enjoy being able to talk to visitors and help with some of our educational programs.

What's one thing about you that would surprise people?

I really enjoy cooking. I get a kick out of cooking with things that I either grew in my own garden or harvested myself through hunting or fishing. There are quite a few meals each year that I can say everything on my plate came from something I produced or harvested.

What energizes you and brings you excitement?

My family. I come from a very close family and find that my favorite times in my life come from them. I consider my nine nieces and nephews my own kids.

At what job, would you be terrible?

I would be a terrible salesman. I like for people to be able to make their own choices.

How long have you been a Chamber Ambassador and what do you like most about it?

I'm beginning my 7th year as an Ambassador. I have met so many people through the Ambassador group and have really grown professionally and personally from these interactions.

About Chamber Ambassadors:

The Great Bend Chamber of Commerce & Economic Development Ambassador Club is made up of 30 men and women from the Great Bend business community who represent the Chamber as volunteers. To find out how you can become a member of the Ambassador Club, contact the Chamber: 620-792-2401.

Destination Bootcamp & Economic Gardening 2-Day Workshop Hosted by NetWork Kansas

Destination BootCamp is a 2.5 day training in Longmont, CO for business owners who want to accelerate their learning curve, receive in-depth instruction, strategies, and specific tactics on how to become a dominant "Destination Business" preferred by customers. Internationally-recognized business expert Jon Schallert teaches a 14-step strategy to turn businesses and communities into destinations.

The Kansas Economic Gardening Network was launched by NetWork Kansas in 2010 to connect second-stage companies that have the intent and capacity to grow their business with expert consulting services designed to increase revenue and create sustainable job growth. Selected businesses interact with an experienced national economic gardening team who deliver services tailored to meet the needs of each business, including: generating sales leads, mapping geographic areas to facilitate targeted marketing, using SEO and other strategies to give the business a competitive edge.

Interested business owners should contact the Chamber office to learn more about scholarships available.



GREAT BEND

CHAMBER OF COMMERCE & ECONOMIC DEVELOPMENT

WELCOME to Our **NEWEST** Chamber Members

SUPER 8

Ron Wright, General Manager
911 Grant St
Great Bend, KS 67530
(620) 793-9000
super8greatbendks@gmail.com
www.wyndhamhotels.com
Hotels – Motels, Lodges

ANYTIME FITNESS

Jim & Evan Schneider, Owners
3721 10th St.
Great Bend, KS 67530
(620) 793-8700
www.anytimefitness.com
Fitness & Health

CANVAS COSMETICS

Jennifer Stoddard, Owner
2817 9th St.
Great Bend, KS 67530
(620) 617-7913
canvascosmetics@gmail.com
Cosmetics

WANT TO JOIN THE CHAMBER?

If your company is interested in joining the Great Bend Chamber of Commerce & Economic Development, fill out the online application on our website: www.greatbend.org. Membership is quick and easy to get started, and it is affordable, too!

You can also sign up to attend one of our Chamber Member Orientation & Marketing Services Seminars. These seminars happen throughout the year. Sign up on our website:

www.greatbend.org/eventregistration



**CELEBRATING OVER 53 YEARS
OF SERVING PEOPLE WITH
DEVELOPMENTAL DISABILITIES!**

There is a Difference.

EARLY EDUCATION
CASE MANAGEMENT
DISABILITY SUPPORTS
RESIDENTIAL ASSISTANCE
COMMUNITY EMPLOYMENT
RECYCLING & MANUFACTURING
GENERAL PUBLIC TRANSPORTATION
& MUCH MORE!

620-792-1325

WWW.SUNFLOWERDIV.COM

Hutchinson Clinic Physicians Serving the Great Bend, Hoisington & Ellinwood Areas

GREAT BEND:

Hutchinson Clinic Great Bend / 3715 6th Street
Dr. Jamil Ahmed, Cardiologist
Dr. Aaron Thiessen, Ear Nose & Throat
Dr. Curt Thompson, Interventional Radiologist
Natalie Williams, PA, Pulmonology

ELLINWOOD:

Ellinwood Medical Clinic / 611 N. Main
Dr. Jamil Ahmed, Cardiologist

HOISINGTON:

Clara Barton Medical Clinic / 250 W 9th St
Dr. Costy Mattar, Cardiologist
Dr. Christine Sanders, OBGYN
Dr. Curt Thompson, Interventional Radiologist

Exceptional Care Close to Home



Call for an appointment: 620-669-2500
www.hutchclinic.com

CHAMBER COFFEE SCHEDULE **Every Thursday | Doors Open at 9am | Program at 9:30am**

April 4, 2019

GREAT BEND PUBLIC LIBRARY

1409 Williams Street in Great Bend

The Great Bend Public Library is a place that is dedicated to the service of its community. Through various free programs and activities for all ages the library becomes a key learning, social, and friendly space that welcomes all.

April 11, 2019

NO COFFEE - ENJOY THE GREAT BEND FARM & RANCH EXPO

at the Great Bend Expo Complex

Celebrating its 7th Anniversary, the Great Bend Farm & Ranch Expo will take place April 10-12th at the Great Bend Expo Complex just two miles West of Great Bend. Featuring nearly 400 exhibitors with indoor and outdoor exhibits, and no admission fees – with something for everyone, bring the family and check it out!

April 18, 2019

PILOT CLUB

Spray-Holt Family Board Room | 1125 Williams in Great Bend

For 96 years, Pilot International has been a service organization that makes a positive difference in their communities. Volunteers conduct programs, projects and fundraisers at the local level with a focus on brain safety, brain research, education, prevention and awareness. Pilot Club of Great Bend meetings are held on the first and third Tuesday of the month.

April 25, 2019

GOLDEN BELT BICYCLE COMPANY

1111 Main Street in Great Bend

Golden Belt Bicycle Company provides sales and service for all types of bicycles from three-wheelers, to wicked 'two-niners' Golden Belt Bicycle Company covers your pedal power needs whether they be on the road or on the trail.

May 2, 2019

PERKS COFFEE SHOP

1216 Main Street in Great Bend

Perks Coffee Shop is a friendly, locally owned coffee shop with a full menu of premium coffees, teas, and other beverages. Our customers also enjoy delicious homemade meals and treats for breakfast and lunch.

Stop by and grab a fresh baked pastry, or buy a bag of our fresh roasted coffee beans! Learn more at www.perkscoffeeshop.com, or call us at 620-786-2334. Watch our Facebook page for lunch specials and fun events!



3307 10th Street • Great Bend, KS 67530

McDonald's

is providing coffee for Chamber of Commerce coffees.