



OUTLOOK BUSINESS JOURNAL

A MONTHLY PUBLICATION OF THE GREAT BEND CHAMBER OF COMMERCE AND ECONOMIC DEVELOPMENT

2017 Board of Directors Set, Officers Elected



Paul Snapp, Chair



Taylor Calcara,
Vice Chair



AJ Chrest,
2nd Vice Chair



Dennis Neeland,
Past Chair



Taylor Dirks,
Treasurer



Aaron Andrews

With the changing of the calendar year comes a change in leadership and new goals for the Great Bend Chamber of Commerce & E.D. Board of Directors.

— Continued on Page 2



Matt Dykes



Rebecca Ford



Megan Hammeke



Casey Harbour



Diann Henderson



Brandon Lawellin



Teresa Mazouch



Dr. Sclic Murray



Gaila Nielsen



Rodrigo Razo



Leilani Schenkel



Aaron Spanier



Nancy Sundahl



Steve Swigart

Ex-Officio Members

Vicki Berryman - Great Bend City Council

Khris Thexton - USD 428

Jennifer Schartz - Barton County Commission

Dr. Carl Heilman - Barton Community College

Continued from Page 1

2017 Board of Directors Set, Officers Elected

The Chamber welcomes six new members to its diverse board, representing a wide range of industries and backgrounds.

Beginning three-year terms are Casey Harbour (Watco Companies), Diann Henderson (Great Bend Recreation Commission), Teresa Mazouch (Wheatland Electric), Dr. Scie Murray (Murray Chiropractic), Gaila Nielsen (ElderCare), and Taylor Dirks (Adams Brown Beran & Ball). Also serving on the board in 2017 will be Megan Hammeke (Great Bend Recreation Commission) representing the Barton County Young Professionals group and Steve Swigart (Sunflower Bank) representing the Ambassador Club.

Paul Snapp (First Kansas Bank) will serve as Board Chair and Taylor Calcara (Watkins Calcara) will serve as the new Vice Chair, while AJ Chrest (Aflac) serves as 2nd Vice Chair, and Dennis Neeland (Great Bend Co-op) is Immediate Past Chair. Taylor Dirks (Adams Brown Beran & Ball) is Treasurer.

Remaining Chamber Board members are Aaron Andrews (Coldwell Banker Sell Real Estate), Matt Dykes (Epoxy Poly), Rebecca Ford (Catholic Charities), Brandon Lawellin (Sutherlands), Rodrigo Razo (Playa Azul), Leilani Schenkel (Almost Home), Aaron Spanier (Innovative Livestock Services), and Nancy Sundahl (Mary Kay).

Ex-Officio Board members are Vicki Berryman (City of Great Bend), Khriston Thexton (USD 428), Jennifer Schartz (Barton County Commission), and Dr. Carl Heilman (Barton Community College).

Finishing their terms on the Board are Kevin Keller (Keller Agency), Marty Steinert (Dove Chevrolet Buick Cadillac), Alan Burton (MPIRE Properties), and Kenny Vink (OPI). Retiring board members will be recognized during the 95th Annual Chamber Banquet.

Reserve Seats for 95th Annual Chamber Banquet

You are invited to attend the 95th Annual Chamber Meeting & Banquet on Saturday, February 18th at the Great Bend Events Center. This year's theme is "Opportunity in Focus."

This year's annual meeting will include recognizing Chamber volunteers, as well as announcing the Business of the Year, Citizen of the Year, and NextGen Leader of the Year award winners for 2016. The evening starts with a cocktail hour at 6 p.m. followed by a catered meal at 7 p.m. and award presentations at 8 p.m. Members pay \$55 per person, or businesses can purchase reserved tables of 8 or 10 with sponsorships available. For more details, contact the staff at 620-792-2401. Register at the Chamber office, 1125 Williams, or on the Chamber website: greatbend.org/ChamberEvents.aspx.



Chamber Office Closed Jan. 2 for New Year's

The Great Bend Chamber of Commerce & Economic Development will be closed on January 2, 2017 for New Year's. They will re-open on Tuesday, January 3rd at 9 a.m. The Chamber office is open weekdays from 9 a.m. to 5 p.m.



BUSINESS I.T. SOLUTIONS

YOUR TRUSTED TECHNOLOGY PARTNER



NEX-TECH.COM/BUSINESS

3700 10th St. • 792.3908



DR. JOSHUA BOONE
Experienced Foot & Ankle Specialist



1514 K-96 Highway
Great Bend, KS 67530
(P) 620-792-4383
www.ckortho.net

Accepting New Patients!

- Board Certified in Foot & Ankle Surgery
- Surgical & Non-Surgical Care for the Foot and Ankle
- Professional Interests - Foot & Ankle Sports Medicine, Ankle Instability, Deformity Correction, and Arthritis of the Foot & Ankle
- U.S. Army Veteran, Served in Iraq
- He and His Wife, Kara, Have Five Children
- Hobbies - Hiking, Cycling, Basketball, and Disc Golf



New Athletic Facility Celebrates Grand Opening

The Fieldhouse, a new athletic training facility located at 2817 9th Street in Great Bend, recently celebrated its grand opening with a Chamber ribbon cutting ceremony in early December. The converted warehouse has been totally renovated to include a full hardwood basketball court, two batting cages, over 10,000 square feet of turf area, an expansive strength and conditioning area, as well as a business wing with office space for small businesses.

"Our vision for this facility is to create a fun, safe place where student athletes can train and improve their skills all year round," says owner Julie Spray. "In addition to facilitating a few small businesses in our facility, we can also rent space for camps, clinics, team practices, and athletic events."

Serving as an incubator for small businesses, The Fieldhouse is home to several small businesses including Kansas Elevate, a basketball training program founded by Chad Friess, and Elite Fitness & Athletic Performance, founded by Matt Edwards. The first business tenant to occupy the business wing is Marketing Maven Consulting, owned by Rachel Mawhirter. The Fieldhouse owner, Julie Spray, encourages interested small business owners to contact her about rental opportunities for space still available.

"We want to make an impact on the youth in this community, and our facility is based on faith and family," Spray says. "Our team will strive to develop lifelong character and leadership skills through athletics."

For more information, stop by the facility at 2817 9th Street in Great Bend, or visit their website at www.fieldhousegb.com. Administrative hours are 10 a.m. to 8 p.m. weekdays, and the phone number for The Fieldhouse is (620) 603-8583.



Cherry Village to Merge with Kansas Senior Living

The upcoming merger between Cherry Village Benevolence, located at 1401 Cherry Lane in Great Bend, and Kansas Senior Living, a Topeka-based, non-profit entity, will result in enhanced services for residents at the local long-term-care facility. "We are so excited about this on behalf of our residents and their families," said Pam Lewis, Cherry Village administrator. "This merger will empower us to make many improvements we could not make on our own. "By ourselves, we are a squeaky little voice," she laughed. "But with the experience and professionalism at Kansas Senior Living, we will have a strong voice to accomplish many things in the near future and the years to come."

Lewis and her family have operated Cherry Village since its opening in 1978. Learn more about the local nonprofit entity by visiting their website, www.cherryvillageltc.org, or by contacting their staff at 620-792-2165.

Outlook Business Journal
A monthly publication of the



1125 Williams,
Great Bend, KS 67530
Phone: 620-792-2401
Fax: 620-792-2404

Web address: www.greatbend.org

EXECUTIVE COMMITTEE

Chairman
Paul Snapp, First Kansas Bank

Vice Chairman
Taylor Calcara, Watkins Calcara Chtd.

2nd Vice Chairman
AJ Chrest, Aflac District Coordinator

Immediate Past Chairman
Dennis Neeland, Great Bend Co-op Association

Treasurer
Taylor Dirks, Adams Brown Beran & Ball

BOARD OF DIRECTORS

Aaron Andrews
Coldwell Banker Sell Real Estate

Matt Dykes
Epoxy Poly, Inc.

Rebecca Ford
Catholic Charities of Southwest Kansas

Megan Hammeke
GBRC / Barton County Young Professionals

Casey Harbour
Watco Companies

Diann Henderson
Great Bend Recreation Commission

Brandon Lawellin
Sutherlands

Teresa Mazouch
Wheatland Electric Cooperative

Dr. Scle Murray
Murray Chiropractic Center

Gaila Nielsen
ElderCare Inc.

Rodrigo Razo
Playa Azul Mexican Restaurant

Leilani Schenkel
Almost Home, Inc.

Aaron Spanier
Innovative Livestock Services

Nancy Sundahl
Mary Kay Cosmetics

EX-OFFICIO

Vicki Berryman, Great Bend City Council

Jennifer Schartz, Barton County Commission

Dr. Carl Heilman, Barton Community College

Khristh Thexton, USD #428

CHAMBER STAFF

Jan Peters, President/CEO
jpeters@greatbend.org

Andrea Bauer, Director of Business Development
abauer@greatbend.org

Megan Barfield, Member Relations Coordinator
mbarfield@greatbend.org

Roxanne Rich, Office/Business Manager
rrich@greatbend.org

CONCRETE SERVICE

221 Baker St.
Great Bend, KS 67530

For ALL Your
CONCRETE CONSTRUCTION
Needs!



Call Kyle Walter for an Estimate!

Office: 620-792-2558

Mobile: 620-639-1026

ComfortPro Inc.

- Heating & Air Conditioning
- Plumbing
- Certified Radon Testing

Furnaces
Perform 90%
+ Efficiency



bryant
Heating & Cooling Systems

Satisfaction
Guaranteed!

Locally Owned
& Operated

Great Bend: 620-793-4208

Larned: 620-285-3966

Toll Free: 800-937-3030

Plains State Bank Moves & Expands in New Location

The Plains State Bank grand opening was Thursday, December 8, at their new full-service branch at 800 Coolidge Street. Members of the Great Bend Chamber of Commerce and community helped the Plains State Bank Staff cut the ribbon to celebrate the Bank's opening.

Plains State Bank originally opened a loan production office in Great Bend in 2014. Before long the Bank's growth and success showed a need to expand to a full-service branch in a larger building. Thus, the Bank made the move to 800 Coolidge Street earlier in 2016.

Gene Dikeman, CEO and President, stated, "The staff and management at Plains State Bank are grateful and appreciative of the warm welcome that has been received from the community. All of our staff has long time ties to Great Bend and the surrounding area, and the building and our staff are a great investment for the community. This event reflects the growth in our business, and we look forward to working with the community and customers in the future."

With the combined experience of over 150 years in banking among the six members of the Great Bend staff, Plains State Bank is prepared to serve the community and customers.

"Each of our staff members has several years of banking expertise, and we look forward to partnering with you to help achieve your financial goals," said Christy Kuhn, Executive Vice President.

For more information about how Plains State Bank's staff can help "make your success simple," call 620-796-2370 or visit www.plainsstatebank.com.



Office Products Inc Earns Canon Top Dealer Award

Each year, Office Products Inc. sets a sales goal for its full line of Canon copiers, and again it has exceeded expectations. As a result, the company recently was informed that it earned the Canon Top Dealer Award for 2015. "This award demonstrates that our staff has done a great job of attending to our customers' needs," said Joey Bahr, OPI technology sales manager. OPI has received the Top Dealer and many other Canon awards during its 20-year history with the copier company. OPI is located at 1204 Main in Great Bend; 516 Broadway in Larned; and 724 N. Main in Russell. Learn more by visiting www.opigreatbend.com.



JANUARY CALENDAR OF EVENTS

View & post all your community events at www.greatbend.org!

- 2... Barton Community College Offices Re-Open
- 2... Great Bend Chamber Office Closed for New Year's
- 5... Chamber Coffee: Thrivent Financial, Chamber Board Room, 1125 Williams, 9:30 a.m.
- 5... Ribbon Cutting: EarCare Hearing Aid Centers, 1925 Main, 10 a.m.
- 5... Ambassador Luncheon: Chamber Board Room, 1125 Williams, 12 p.m.
- 8... Auditions for GBCT Community Theatre, Crest Theatre, 1905 Lakin, 2 p.m.
- 9... Auditions for GBCT Community Theatre, Crest Theatre, 1905 Lakin, 7 p.m.
- 11... Barton Women's & Men's Basketball Games, 5:30 & 7:30 p.m.
- 12... Chamber Coffee: Habitat for Humanity, Chamber Board Room, 1125 Williams, 9:30 a.m.
- 13... Shafer Gallery Exhibit Opening Reception, 245 NE 30 Rd, 6-8 p.m.
- 15... Submission Deadline for February Issue of *Outlook Business Journal*
- 14... Icy Sidewalk Sale at Participating Retailers
Visit [Explore Great Bend's Facebook page](#) for more information.
- 16... Barton Community College Closed for Martin Luther King Jr. Day
- 17... Barton Wrestling Match, 245 NE 30 Rd, 4 p.m.
- 18... Chamber Marketing Seminar, 1125 Williams, 10 a.m.
- 18... Barton Women's & Men's Basketball Games, 5:30 & 7:30 p.m.
- 19... Chamber Coffee: Central Kansas CASA, Basement of the Great Bend Public Library, 1409 Williams, 9:30 a.m.
- 25... Barton Women's & Men's Basketball Games, 5:30 & 7:30 p.m.
- 26... Chamber Coffee: Hiss Sherman Wealth Management & Behrends Tax & Accounting Solutions, 2001 Broadway, 9:30 a.m.
- 28... BCYP Literacy Kit Work Day, Chamber Office, 1125 Williams, 10 a.m.
- 28... Golden Belt Community Concert: Alina Kiryayeva
- 28... Miss Barton County / Miss Golden Belt Pageant, GBHS Auditorium, 7 p.m.
- 31... HR Roundtable Luncheon: The Page, 2920 10th, 11:30 a.m.

RECURRING EVENTS

- Barton County Commission Meetings, Mondays, Courthouse Room 106, 9 a.m.
- American Legion Bingo, Tuesdays & Thursdays, 1011 Kansas Ave, 7 p.m.
- Argonne Bingo, 1123 Main Street, Wednesdays at 7:15 p.m., Sundays at 1:45 p.m.
- Dinner Served at American Legion, Fridays, 1011 Kansas Avenue, 6 p.m.
- See events from the Public Library at greatbend.mykansaslibrary.org.
- See events from Barton Community College at www.bartonccc.edu.
- See City events at www.greatbendks.net.

REMINDER - POST YOUR 2017 EVENTS

Chamber Members are reminded and encouraged to post their events on our online Community Calendar! The calendar is a valuable source of reference for residents and businesses, as well as the source for *Outlook Business Journal* listings, Chamber Coffee Announcements, and MORE! Our calendar also includes features to create recurring events for your convenience. Submit your event online at www.greatbend.org. Chamber Staff will review your submission and your event will be live within 48 hours!

Human Resource Roundtable Jan. 31

Are you a small business owner? Are you an HR Professional? Do you have employees? If your answer to any of these questions was yes... then the HR Roundtable may be a valuable resource for you! Looking to provide interesting topics and relevant conversation for HR Professionals and Small Business Owners alike, future luncheons will include a **REVAMPED FORMAT** to encourage conversation, questions and sharing of "best practices." We hope you'll take a look at future topics and make plans to join us!

TUESDAY, JANUARY 31ST

"Kansas WorkforceONE Employer Services" presented by Tucky Allen, Business Services Director

Did you know there are services available to Kansas Businesses to support and underwrite partial costs of recruiting, on-the-job training, customized training, more? In this presentation, Mr. Allen with Kansas WorkforceONE will provide a thorough overview as well as handouts for future reference.

Meetings happen in the Banquet Room at The Page, 2920 10th Street in Great Bend. A buffet lunch is served at 11:30 a.m., followed by the presentation and discussion at 12 p.m. Fee is \$20 per person.

Register online: greatbend.org

And Save the Date:

TUESDAY, APRIL 25TH

"Can You Afford to NOT Have Workers Comp Insurance?"



MORE THAN MUNICIPAL - Strategic Vision & Unique Attractions Improve Tourism & Quality of Life

Christina Hayes grew up next door to Great Bend in Claflin and still recalls the comforting hometown atmosphere in general and the memorable special events in particular.

She thinks of those fond memories as she creates and enhances local events in her job as the City of Great Bend Community Coordinator. She also serves as department head for the city's Convention & Visitors Bureau. "I still remember the street dances and other community gatherings in Claflin," she said. "I also remember coming here for Great Bend's Trail of Lights. This and other factors make me feel bonded to Great Bend.

"I hope people here will recall the good times at any number of our events," she added. "The overall goal is improving our quality of life; creating a few good memories for the future can be the fringe benefit."

When Hayes accepted the newly created coordinator position in 2011, her mind was probably swirling with ideas. But she knew that to get positive results she had to concentrate on a few basics. One of those basics is creating "something Great Bend can be proud of while focusing on family-friendly events," Hayes said.



Two of the more popular results are June Jaunt and Party in the Park; this will be the sixth year for the Jaunt and the fifth for the Party.

Hayes noted that a parade "with a different kind of twist" will be a new attraction at this year's Party in the Park. Details will be announced later.

"I discovered early on that while it is important to attract visitors to our community, we want to appeal to our local families first," Hayes said. "Compared to other towns of our size Great Bend is ahead of the game.

"For example, the city was willing to create this community-coordinator position, which is important to centralizing efforts to create and organize events," she noted. "We are trying to make a name for ourselves by rolling out the red carpet for local residents and visitors alike."

While Hayes' main focus always is organizing activities for the entire family, plans are in the works for events that will appeal to the 21-and-older set. "We are working on a margaritas-and-tacos event, as well as a pub crawl," she explained. "These will be geared to adults of all ages. We will know more details later on."

While the community as a whole is foremost in Hayes' mind, she also wants to do what she can to support the city's retailers. The Art & Wine Walk is one example of how she and her colleagues provide an avenue right into the stores. "The Art & Wine Walk, along with a variety of monthly shopping promotions, attract shoppers into local retail outlets," Hayes said. "Our Shop Great Bend promotions, such as Jumbo Monopoly, increase foot traffic because of the possibility of winning gift certificates and other prizes."

Since booking a variety of gatherings also is important to the community coordinator, the Great Bend Events Center has been a solid asset. It is currently undergoing a facelift and its significance will continue to grow in the months and years to come. "The Events Center is a popular destination for class and family reunions, weddings, school activities and one-day meetings," she said. "We want to put special emphasis on bringing natives back home to share a day or a weekend with family and friends, and maybe tend to some business at a meeting.

"In addition, we have made significant bids for more conventions. We anticipate this will result in more rented motel rooms Monday through Thursday. We are ready to play ball with our new and improved Events Center."

As Hayes tackles her job each day she thinks of the slogan "Explore Great Bend. Shop. Stay. Play." It helps her focus on the city's overall goals of unifying retailers, creating events, and supporting and promoting local attractions. The gratifying payoff occurs when she hears positive feedback from the community. "Knowing that people are enjoying themselves makes it all worth it," she commented. "Our city is invested in this whole quality-of-life thing; we take it seriously.

"If we do hear from naysayers, I always want them to know that I genuinely care about their comments," she added. "I am open to their suggestions and new ideas anytime."

While Hayes may be the go-to person when it comes to city-sponsored events, she is well aware she can't do any of this alone. She relies on many partners including: retailers and other businesses; the city council; Chamber of Commerce; city staff members; volunteers; food and other vendors; and, of course, those who attend all the activities.

"I cannot tell you how much I appreciate everyone in this great community who pitches in with time, money and talent," she said. "These partnerships are the reason for our many successes." —

City Events slated in 2017

The number of city events will grow this year but five popular staples already are slated on the 2017 calendar. They are:

- Art & Wine Walk May 11th
- June Jaunt June 2-4
- Outdoor Movie Dates TBA
- Party in the Park August 12th
- Zoo Boo October 28th
- Home for the Holidays Festival & Parade November 25th

Follow the @ExploreGreatBend Facebook page for all the events details throughout the year! You can also follow them on Twitter.





Phone: **620-792-5700**

1905 19th Street in Great Bend, Kansas

Family Practice & Mental Health Services

Preventative Care

Prescription Assistance

Diabetes Management

Evening Appointments

Open to Everyone

Bilingual Staff

All Insurance Accepted

Including Medicare, Medicaid & KanCare

"We Care About Your Health"

www.HeartofKansas.com

Meet Our Veterinarians

DR. NICK HENNING

Native of Ness City, Kansas
Still Helps on His Family's Farm
Avid Duck Hunter



ANIMAL MEDICAL CENTER

Great Bend (620) 792-1265
& Ellinwood (620) 564-3009

Barton Presents 10-Hour OSHA Training Jan. 18-19

Barton Community College is now enrolling for a 10-hour OSHA general industry training event, coming up Jan. 18-19 at their Great Bend campus. The training is intended to provide entry-level general industry workers information about their rights, employer responsibilities, and how to file a complaint as well as how to identify, abate, avoid and prevent job-related hazards on a job site. The training covers a variety of general industry safety and health hazards which a worker may encounter.

January 18th @ 8 a.m. to 4 p.m.

- Introduction to OSHA
- Walking and Working Surfaces
- Exit Routes, Emergency Action Plans, Fire Prevention Plans, Fire Protection
- Electrical
- Personal Protective Equipment
- Hazard Communication

January 19th @ 8 a.m. to 12 p.m.

- Fall Protection
- Blood-Borne Pathogens
- Hazardous Materials

The trainer will be Brad Honas, SHEP Certified OSHA Outreach Trainer. The fee is \$175 per person, which includes \$8 student completion card fee, printed materials, and refreshments. Lunch is on your own from 12-1 p.m. with a cafeteria all-you-can eat buffet available for just \$6 (cash only). To register, contact Krystall Barnes at Barton Community College: 620-792-9333.



Hutchinson Clinic Welcomes New Oncologist

The Hutchinson Clinic welcomes Dr. Shannon Haenel, Oncology/Hematology to our staff. Dr. Haenel has offices in Hutchinson and in Great Bend (at the Hutchinson Clinic Medical Office Building by Great Bend Regional Hospital). Dr. Haenel is fellowship trained, takes a whole person approach to compassionate cancer care, and sees patients in Great Bend on Wednesdays. For an appointment, call the Hutchinson Clinic at 620-669-2565 or visit www.hutchclinic.com.



United Way Brings 'Boxes of Love' to the Elderly

United Way of Central Kansas is excited to bring a new project to Great Bend! We have teamed up with Meals on Wheels, ElderCare, and Golden Belt Home Health & Hospice to bring a "Box of Love" to elderly members of our community. These boxes will be delivered to homebound seniors on Valentine's Day, and will be adorned with a homemade Valentine's Day card made by children from Great Bend Children's Learning Center, Teen Court, Girl Scout of Kansas Heartland, and Caring Hands Daycare. More than 20 local businesses will serve as drop-off locations for donated items. "With this project, we want to make sure that we take care of the elderly members of our community." Julie Bugner-Smith, UWCK Executive Director. See a complete list of donation locations and the items requested at www.uwck.org or find them on Facebook.





BCYP Members Create Holiday Bags for 42 Foster Children

Last month, more than 80 members of the Barton County Young Professionals group gathered for their annual holiday party. For the second year in a row, the theme was "Party with a Purpose" and Central Kansas CASA was a major partner in helping with the service project that accompanied the holiday festivities. Admission to the party was a donation for 42 duffle bags being assembled for foster children served by the local nonprofit organization. Some members brought pajamas or other essential items, while other members donated sweet treats or bedtime stories. The event was sponsored by Animal Medical Center and MPIRE Properties, who provided free food and refreshments, along with a 60" smart tv and other door prizes.

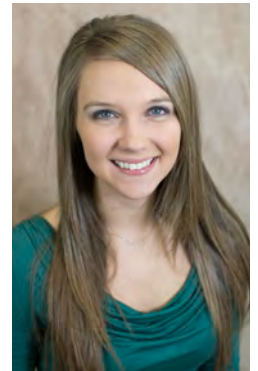
"The 'Party with a Purpose' ties directly to our BCYP mission to Lead, Network, and Volunteer," says Regan Reif, 2016 and 2017 Steering Committee Chair. "Our group has placed a great emphasis on volunteering, and I am proud of all who came to volunteer their time to make a difference in so many children's lives during the holiday season."

The group's next event will also be a service project, partnering with the United Way of Central Kansas to assemble hundreds of literacy kits that will be distributed to preschool students in the spring. BCYP members are asked to sign up for the Literacy Kit Work Day, scheduled Saturday, January 28th from 10 a.m. to noon at the Chamber Office, 1125 Williams. To sign up or for more information, find the Barton County Young Professionals page on Facebook or visit www.bartonyip.com.



Galindo Promoted at Plains State Bank

The Plains State Bank is pleased to announce the promotion of Cory Galindo to BSA/Operations Officer. Cory works at the Great Bend Branch located at 800 Coolidge Street. Cory's primary focus is Bank Secrecy Act, bank operations and customer service.



"Cory's dedication, professionalism and great attitude make her a great fit for this position", remarked Lindsay Schartz, Senior Vice President. Cory has 6 years of banking experience with expertise in teller duties, new accounts, and deposit operations. Cory has been a part of the team responsible for converting the Great Bend loan production office over to a full-service banking facility serving the Great Bend and surrounding area(s).

Lewis Promoted to Director of Marketing

As the new director of marketing at Cherry Village Benevolence, Erin Lewis is bringing several new dimensions to the job. Lewis, who has worked at the long-term-care facility for five years, has held positions in administration and finance. Now she is working one-on-one with residents and families, as well as area health-care providers. "I want to help families make the most informed decisions about care for their loved ones," Lewis said. "We have found that in some cases, long-term care is not the best solution," she explained. "But families often don't realize what other options are available. I don't view my role as solely a marketer. I want to be a resource for the community for the care of our elders."

Lewis' new responsibilities include admission coordination, public information, outreach programs, long-term-care education, web development and face-to-face meetings with other health-care facility representatives.

One of Lewis' first items of business was to establish a Cherry Village website, www.cherryvillageltc.org. In addition, Cherry Village is active on Facebook. "Families are using the internet more and more to find a new home for loved ones," she noted. "We want to be sure our voice is heard."

Lewis is a 1990 graduate of Ellinwood High School. She earned an associate's in arts degree at Barton Community College in 1992. Her professional background includes a position as sales account manager at KSN-TV.

A local family has managed Cherry Village, 1401 Cherry Lane, since it opened in 1978.

Erin Lewis, along with Tina Mingenback, Dietician for Cherry Village, assemble cookie gift baskets during the holidays.



ENROLL NOW!

Indoor Soccer
Leagues for
Kindergarten
thru Adults
forming now!

**Coaches
Needed!**



GreatBendRec.net
1214 Stone Street
620-793-3755



Registration Deadline January 20, 2017

GREAT BEND FARM & RANCH EXPO

6TH ANNUAL



April 5-7, 2017

www.greatbendfarmandranchexpo.net

April 5th 9 a.m. to 5 p.m.

April 6th 9 a.m. to 7 p.m.

April 7th 9 a.m. to 4 p.m.

**Reserve your exhibitor
space today!**



C&V Home Improvement Purchases Kansas Doors

When Matt Hoisington recently learned about an opportunity to expand his business, he didn't hesitate for long. Hoisington, owner of C & V Home Improvement Inc., has purchased Kansas Doors & Exteriors Inc. from Jim Gretz. The new venture is Kansas Doors, a subsidiary of C & V Home Improvement; it was official Dec. 12. "I had plans to get into the commercial overhead-door business and then this opportunity just recently came up," Hoisington said. "I look at it as a marriage of two companies. We are adding commercial doors to our product menu and bringing experienced installers along with them."



Each of the four Kansas Doors' installers has at least 12 years experience. The Kansas Doors' office manager also will join the crew at C & V, 1107 E. 10th. "This is a great team and we can learn a lot from them," Hoisington says.

When Hoisington bought C & V six years ago, he had 10 employees. "We have doubled that to 20 and will have to expand our current facility," he noted. As a dealer for both C.H.I. and Raynor garage doors, C & V has concentrated on residential customers. The company will continue with those brands to provide homeowners a variety of options. In addition, both C & V and Kansas Doors are ProVia dealers.

C & V products still include insulation, siding, replacement windows and doors, seamless steel guttering, stucco, cultured stone, egress windows, sheds, awnings and patio covers. Because of the new venture, Hoisington has added overhead and industrial doors, security gates, gate operators, and commercial walk-through doors and operators.

Hoisington's residential-product territory includes a 60-mile radius of Great Bend and a 60-mile radius of Hays; C & V has an office in Hays. The commercial reach will go statewide, including the Dodge City and Garden City areas where Kansas Doors has served many customers over the years. Hoisington commented, "Customer service and quality products will continue to be our priorities."

Learn more by calling C & V at 620-796-2500 or by visiting their website, www.cvhpros.com.

Singers Wanted for Central KS Community Choir

The Central Kansas Community Choir is recruiting singers for the 2017 spring season. The CKCC strives to provide challenging and quality performances to the residents of central Kansas. Choir membership is open to all choral singers high school age and older. Participants must have some choral singing background and be able to attend all rehearsals as the choral literature will be challenging and rehearsal time is short. 2017 will mark the 8th season for this ensemble as it convenes every other year. The CKCC is sponsored by Barton Community College. There is a \$25 fee for each singer which will help defray music and production expenses. Interested singers should attend the first rehearsal, scheduled 7-9 p.m. Jan. 9 with the final concert presented April 4. The choir will hold rehearsals on Monday evenings from 7-9 p.m. For more information, call (620) 792-9395.

Dream Center Celebrates 2nd Floor Expansion

On Thursday, December 10th, the Central Kansas Dream Center (CKDC) celebrated the opening of their recent expansion to the second floor with a Ribbon Cutting Ceremony. The renovation allows the CKDC to bring their men's program in house. The renovation increased their capacity from 6 men to 36 men between their 9-month discipleship program and the Boys Aging out of Foster Care Program for youth age 18-21. The second floor area features shared living quarters, kitchen, laundry, a staff apartment, rest-rooms and more.

"The CKDC receives no federal, state or United Way dollars but God provides" said Kimberly Becker, CKDC Director. The organization raised \$150,000.00 for the 2nd floor renovations in a year, completing construction in 9-months.

Becker also shared that plans for construction on the third floor are already underway and may begin as early as January. The 3rd floor will provide the ability to house married couples who want to enter the programs together, house additional staff and add a clinic room, prayer chapel, offices and an elevator! Tax credits are still available as they seek to raise the additional funding for the 3rd floor.

The Central Kansas Dream Center, located at 2100 Broadway in Great Bend, is a multifaceted ministry that reaches hurting people, restores families and helps individuals realize their dreams. We provide the people we serve with a sense of physical, spiritual, and emotional security.



BCC Service Organization Raises \$600 for Charity

The Community Service Organization (CSO) at Barton Community College raised more than \$600 worth of gifts and gift cards for Barton students for Christmas through member donations. Pictured are just a few of the members who participated in the event. They are

(from left) Amanda Evans, Emmy Kempke, Brittnee Barber, Molly Morgan, Brant Millerborg, Michael Sinks and Corrigan Bartlett.



WELCOME TO OUR NEW MEMBERS

HEARTLAND TAXES & MORE

Cindy Parr
PO Box 344
Great Bend, KS 67530
www.heartlandtaxes.com
620-793-5885
Accountants - Public

TRUE PERSPECTIVE IMAGES

Great Bend, KS 67530
620-617-4163
trueperspectivimages.com
Photography

MITCHELL MOTORS, LLC

1919 Main St.
Great Bend, KS 67530
620-792-1879
Auto Sound & Accessories

WASHINGTON ROOFING & INSULATION, INC.

Great Bend, KS 67530
620-792-2430
Roofing Contractors

WESTERN BEVERAGE, INC.

Dodge City, KS
620-227-7641
Beverage Distributor

ROBERT A. ANDERSON, SR. LAW FIRM

102 E 3rd
Ellinwood, KS 67526
620-564-2923
Attorney

GIFT CERTIFICATES EXCEED \$140K

Each year, the Great Bend Chamber of Commerce & Economic Development facilitates a "shop local" campaign by issuing thousands of Chamber Gift Certificates, which can be used at over 140 local member businesses. The total for 2016 certificates issued was well over \$140,000! That's money that stays right here in our community to foster local spending and economic growth.



More Than **50 Years**
of Serving People with
Developmental Disabilities!

“The Choice for Growth.”

Early Education
Case Management
Disability Supports
Residential Assistance
Community Employment
Recycling & Manufacturing
General Public Transportation
And MUCH More!

www.sunflowerdiv.com



Shannon Haenel, DO
MEDICAL ONCOLOGY/HEMATOLOGY

- > Whole person approach
- > Compassionate Cancer Care
- > New promising treatment options

Now accepting new patients in Great Bend

3715 6th Street, Great Bend, KS 67530
620.669.2565 | Fax 620.694.2038
1.800.779.6979



CHAMBER COFFEE SCHEDULE

Every Thursday at 9:30 am

January 5, 2017

Thrivent Financial Services - Melinda Kurth
Chamber Board Room, 1125 Williams

Thrivent Financial is a fortune 500, not-for-profit company that helps our member owners be wise with money. Visit with Melinda Kurth to see how she can help you connect your faith with your finances!

January 12, 2017

Habitat for Humanity: Barton County Area
Chamber Board Room, 1125 Williams

Habitat for Humanity has been in Barton County since 2001. Our non-profit organization gives a hand up, not a hand out. All the donations we receive are used to build or remodel homes for our partner families, who then purchase the home through a zero-interest, 25-year mortgage. Habitat for Humanity is currently working on the construction of one new house in Hoisington with a second one to soon follow in 2017.

January 19, 2017

Central Kansas CASA
Great Bend Public Library Basement, 1409 Williams

The mission of Central Kansas CASA, Inc. is to serve as an advocate for abused and neglected children by providing a pool of trained caring volunteers who speak for the best interest of a child until a safe, loving, and permanent home is found.

January 26, 2017

Hiss Sherman Wealth Management & Behrends Tax & Accounting Solutions, LLC
2001 Broadway Avenue

Hiss-Sherman Wealth Management is a locally owned independent financial and investment advising business owned by the partners Bob Hiss, Matt Hiss & Dennis Sherman with over 50 years combined experience.

Founded in 2014, Behrends Tax & Accounting Solutions located in the same building is owned and operated by certified public accountants Adam and Brett Behrends. Services provided include business and individual tax preparation, bookkeeping, payroll services, and much more.

February 2, 2017

Central Kansas Dream Center
Hungry Heart Soup Kitchen, Entrance on 16th & Williams

The Central Ks Dream Center is a multifaceted ministry that reaches hurting people, restores families and helps individuals realize their dreams. We provide the people we serve with a sense of physical, spiritual, and emotional security.



3307 10th Street • Great Bend, KS 67530

McDonald's

is providing coffee for Chamber of Commerce coffees.