



OUTLOOK BUSINESS JOURNAL

A MONTHLY PUBLICATION OF THE GREAT BEND CHAMBER OF COMMERCE AND ECONOMIC DEVELOPMENT

“The Art of Community” 96th Annual Chamber Banquet to Incorporate the Arts in More Ways Than One

The order of ceremonies for the Annual Chamber Meeting & Banquet hasn't varied much for several decades. The popular annual social event and celebration starts with a cocktail and social hour, followed by a catered dinner with live music, and then the special recognition of community award winners. But enhancing the well-known lineup of programming is some new entertainment, centered around this year's theme, “The Art of Community.”

This year's banquet will connect attendees and the community using art as a visual aide. An exhibition of local high school students' artwork in both 2D and 3D mediums will both entertain and delight banquet guests. Entries for the contest are being accepted until December 15th. Interested students and parents can learn more on the Chamber website, www.greatbend.org. Special thanks to Watkins Calcara and Brick Alley Creative Studio for sponsoring the contest.

And in addition to the new art exhibition, special entertainment for the evening will include a live painting on stage by Annika Wooten, Miss Leavenworth County. “Wooten tells us that her art is inspired by her goal to engage an audience and bring them into a shared experience,” says Andrea Bauer, Director of Business Development for the Great Bend Chamber of Commerce. “The art piece she creates at the banquet will be representative of our community and inspired locally. We can't wait to see what she creates!”

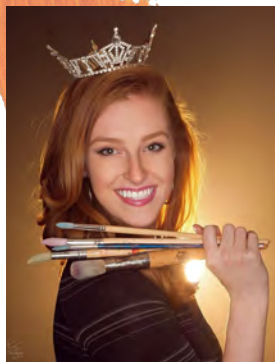
As always, the Chamber leadership will announce the winners for their three award programs: Citizen of the Year, Business of the Year, and NextGen Leader of the Year. Nominations for the first two are made by a closed committee, but the third award selection committee welcomes nominations from the public until December 17th through the online form available on the Chamber's Facebook page.

Invitations to this year's Banquet were mailed out late last month, and reservations can be made online at any time. Visit www.greatbend.org to reserve your table or purchase individual tickets. Or, feel free to stop by the Chamber office, 1125 Williams, on weekdays between 9 a.m. and 5 p.m.

**Entertainment
Sponsor:**



Presenting Sponsors:



Annika Wooten, Performer



Paul Snapp, 2017 Chairman of the Board, channels his artistic abilities during a special painting event hosted for the entire Chamber Board of Directors. Their work will also be on display during the 2018 Chamber Banquet.

Want to grow revenue & customers, but don't know what to do next?

We Do.



Advertising Solutions

- Marketing and Brand Strategy
- Design and Media Production
- Social Media Experts
- Google AdWords Certified

Ready to take the next step?
Contact Nex-Tech today!

➤ **877.625.7872**
nex-tech.com/advertising

ER VS. URGENT CARE

ER

- ✓ Sudden Shortness Of Breath
- ✓ Intense Chest Pain
- ✓ Severe And Sudden Stomach Pain
- ✓ Broken Bone
- ✓ Severe Burn Or Bleeding
- ✓ Crushing Intense Headache
- ✓ Open Wounds

Great Bend REGIONAL HOSPITAL

514 Cleveland Street
Great Bend, Kansas
(620) 792-8833
gbregional.com

EMERGENCY ROOM
Open 24 / 7 / 365

URGENT CARE
Open Daily 8 to 8

Urgent Care

- ✓ Cold, Flu Or Sinus Pain
- ✓ Sprain
- ✓ Rashes Or Minor Burns
- ✓ Sore Throat
- ✓ Ear Pain
- ✓ Animal Or Insect Bite
- ✓ Fever Over 101.5

Partington Receives Career Achievement Award

Howard Partington received the Career Achievement Award from the Kansas Association of City/County Management at the 2017 KACM Annual Conference in Lenexa, Kansas. This award serves to recognize those professional local government managers and administrators who are retiring from the profession. The Kansas Association of City/County Management (KACM) is an organization of local government management officials working together since 1951 to support and promote professional management and high ethical standards for effective democracy in local city and county governments in Kansas.



The Kansas Association of City & County Managers presented the Career Achievement Award to Howard Partington at their annual conference on November 16th.

"Howard has been a leader in our profession and a highly respected member of our organization for many years. He has set the bar high for other managers with his professionalism and by always engaging younger members in management to push them to do more for their cities. We thank him for his service to the citizens of our state and his community." – Doug Bach, KACM President

Nex-Tech Named Continuum Rookie of the Year

Sixteen service provider partners of Continuum® were recognized at an awards ceremony on October 3, 2017 held in the Las Vegas Cosmopolitan Hotel. The event was part of the annual user's conference, called Navigate 2017.



Nex-Tech was named Rookie of the Year as the partner with the highest revenue growth since coming onboard in the previous twelve months.

"Navigate was founded as an event to benefit and celebrate our partners," said Michael George, CEO, Continuum. "We want to take this moment to congratulate all our award-winning partners for their successes, not just in revenue and growth but in building effective business models and tackling the challenges of the MSP (managed service providers) market head-on. Whether they're succeeding in marketing or in elevating the skillsets of their technicians, we're here to recognize the achievements of these leaders in the managed service industry."

End of Year is a Great Time to Update Your Profile

Every member of the Great Bend Chamber of Commerce & Economic Development receives a FREE and searchable listing in the Member Directory at www.greatbend.org. This categorical and alphabetical directory gives your company a free place to advertise online, but you want to make sure your information is up-to-date! If you're not sure and want some help getting freshened up for the new year, make plans to attend our MIC Demo on Thursday, December 21st at 3 p.m. We'll have holiday treats too!

People on the Move - New Hires, Promotions & News

ABBB Welcomes Faruqi as Chief Information Officer

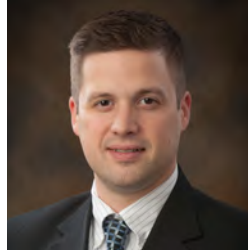
The certified public accounting firm of Adams, Brown, Beran & Ball, Chartered (ABBB) is pleased to announce the addition of Kamran Faruqi to their professional team as the Chief Information Officer (CIO). Faruqi holds a Bachelor of Science in Management Information Systems from Langston University and a Master of Business Administration in Management from Northeastern State University. He is a lifetime member of the Delta Mu Delta Honor Society and is Lean Six Sigma Green Belt certified. Faruqi resides in Great Bend, Kansas with his wife, Mary, and their dog, Maggie. In his free time, he enjoys walking, gardening, and cheering on the Detroit Red Wings.



Kamran Faruqi

Aaron Emerson Promoted at First Kansas Bank

Aaron Emerson has been promoted to Vice President according to Paul Snapp, President and CEO of First Kansas Bank. In announcing the promotion Snapp commented, "The enhancements he has put in place as Information Officer for the Bank are state of the art, secure, reliable, convenient and user friendly for our customers." Aaron grew up in Lawrence, Kansas and graduated with a Bachelor's Degree in Economics from the University of Kansas. Aaron and his wife, Hillary, have three children and make their home in Great Bend.



Aaron Emerson

Jay Luerman Promoted at First Kansas Bank

Jay Luerman has been promoted to Assistant Vice President and Loan Officer according to Paul Snapp, President and CEO of First Kansas Bank. Jay grew up in Ashland, Kansas and holds a Bachelor's Degree in Agri-Business from Fort Hays State University. Jay and his wife Joanna make their home in Great Bend.



Jay Luerman

Sunflower Diversified Hires Keffer as HR Director

When Vicki Keffer signed on for her new position at Sunflower Diversified Services, she knew she had found a career rather than a job. Keffer is the new director of Human Resources at the non-profit agency that serves infants, toddlers and adults with developmental disabilities and delays throughout central Kansas. Keffer was born and raised in Barton County. She earned an associate's degree in business/accounting at Barton Community College. While attending BCC, Keffer was a member of Business Professionals of America; she served as state president and national vice president. Keffer worked at CPI (now CUNA Mutual) for 15 years. Keffer was then sales manager at The Omni Group, a New York firm. Keffer and her husband, Bill, have two adult children and one grandchild.



Vicki Keffer

Farmers Bank Welcomes Neeland, Promotes Hertel

Farmers Bank & Trust is pleased to announce the addition of Steve Neeland as Vice President, Commercial and Agricultural Loan Officer. Steve comes to Farmers Bank with 25 years of lending experience. Steve holds a Bachelor of Business Administration from Fort Hays State University, and is located at the downtown branch at 1612 Main Street in Great Bend. Steve and his wife, Lisa, reside in Great Bend with their two children, Tanner and Allison.

Farmers Bank also announces the promotion of Lyndsae Hertel to Assistant Vice President, Credit Administration Officer. Lyndsae joined Farmers Bank in October of 2010 after graduating from Fort Hays State University with a Bachelor of Business Administration. Lyndsae resides in Ellinwood with her fiancé, Derek, and two children, Josey and Canon.



Steve Neeland



Lyndsae Hertel

Outlook Business Journal
A monthly publication of the

GREAT BEND
CHAMBER OF COMMERCE
& ECONOMIC DEVELOPMENT

1125 Williams,
Great Bend, KS 67530
Phone: 620-792-2401
Fax: 620-792-2404

Web address: www.greatbend.org

EXECUTIVE COMMITTEE

Chairman

Paul Snapp, First Kansas Bank

Vice Chairman

Taylor Calcara, Watkins Calcara Chtd.

2nd Vice Chairman

AJ Chrest, Aflac District Coordinator

Immediate Past Chairman

Dennis Neeland, Great Bend Co-op Association

Treasurer

Taylor Dirks, Adams Brown Beran & Ball

BOARD OF DIRECTORS

Aaron Andrews

MPIRE Realty Group

Matt Dykes

Epoxy Poly, Inc.

Rebecca Ford

Catholic Charities of Southwest Kansas

Megan Hammeke

GBRC / Barton County Young Professionals

Casey Harbour

Watco Companies

Diann Henderson

Great Bend Recreation Commission

Brandon Lawellin

Sutherlands

Teresa Mazouch

Wheatland Electric Cooperative

Dr. Scle Murray

Murray Chiropractic Center

Gaila (Nielsen) Demel

United Way of Central Kansas

Rodrigo Razo

Playa Azul Mexican Restaurant

Leilani Schenkel

Almost Home, Inc.

Aaron Spanier

Innovative Livestock Services

Nancy Sundahl

Mary Kay Cosmetics

Steve Swigart

Sunflower Bank / Ambassador Club

EX-OFFICIO

Vicki Berryman, Great Bend City Council

Christina Hayes, Great Bend CVB

Jennifer Schartz, Barton County Commission

Dr. Carl Heilman, Barton Community College

Khris Thexton, USD #428

CHAMBER STAFF

Jan Peters, President/CEO

jpeters@greatbend.org

Andrea Bauer, Director of Business Development
abauer@greatbend.org

Megan Barfield, Member Relations Coordinator
mbarfield@greatbend.org

Ashley Mitchell, Office/Business Manager
amitchell@greatbend.org



A Licensed Community Mental Health Center

- Individual & Family Counseling in Great Bend, Larned, Lyons & St. John
- Medication Consultation
- Addiction Assessment & Recovery

Serving the Mental Health Needs of Central Kansas Since 1967

5815 Broadway in Great Bend, KS
1-800-875-2544
www.thecentergb.org

People on the Move - Continued from Page 3

Conard Represents Rush County on SDS Board

Cheryl Conard, a resident of rural Timken, is a new member of Sunflower's Board of Directors. Conard attended Fort Hays State University for a year and raised three children. She then worked at a bank and for the Federal Deposit Insurance Corporation. Conard also worked for La Crosse Furniture Co. for 30 years before her retirement.



Christy Kuhn Graduates from School of Banking

The Graduate School of Banking at Colorado (GSBC) is pleased to announce that Christy Kuhn, executive vice president for The Plains State Bank in Great Bend, has graduated from the Executive Development Institute for Community Bankers® (EDI), a rigorous 19-month leadership development program for up-and-coming executive officers of community banks. Kuhn was one of 5 bank executives from around the U.S. to be recognized for completing the program. Kuhn manages the central Kansas market through the banking facility in Great Bend where she resides with her husband, Eric.



Christy Kuhn, Center

The Fieldhouse Introduces Trainer, David Tudor

The Fieldhouse is pleased to welcome David Tudor as one of our Personal Trainers to our growing staff. The Fieldhouse is a premier athletic training facility that specializes in group fitness, athletic training, basketball and baseball skills training. Dave has his certification in International Sports Science Association. David offers High Intensity Interval Training and personal training. Learn more at www.fieldhousegb.com.



David Tudor

LeRoy Joins Therapy Staff at Cherry Village

Chelsy LeRoy recently started using her therapeutic skills at Cherry Village Benevolence to help improve the residents' quality of life. LeRoy is the new physical therapy assistant on staff at Cherry Village, a non-profit, short- and long-term-care facility at 1401 Cherry Lane. LeRoy works with Cherry Village residents to improve their balance, strength and endurance, while offering advice on ways to enhance safety. Chelsy holds an associate's degree from Colby Community College in applied science for physical therapy.



Chelsy LeRoy

Gerritzen Retires After 40+ Years at BCC

LaVonne Gerritzen's legacy at Barton Community College is one of longevity and adaptability. As technology changed over the years since she started in 1974, so did she. She started as a keypunch operator, managing the records that tracked students and enrollments at Barton. After teaching word processing, she went back to school and earned a Bachelor's Degree from FHSU and became a full time instructor, and eventually the coordinator of the Business Computer Management program. She then earned a Master of Science from Kansas State University.

In 2001, she became the Associate Dean for Career Technical Education, then Executive Director for Workforce Training and Community Education.



LaVonne Gerritzen



**HEATING
COOLING
PLUMBING**

620-793-4208



HIGHLIGHTED EVENTS IN DECEMBER

- 1... Healthy Holiday Gathering, Yoga Central of Great Bend, 6009 10th St. @ 6 p.m.
- 2... Holiday Open House, Kansas Wetlands Education Center, 592 NE K-156 Hwy @ 9 a.m.
- 2... Shafer Art Gallery Holiday Open House, 245 NE 30 Rd. @ 1 p.m.
- 3... Xi Delta Upsilon Holiday Décor, Flavored Celebrations, 1315 Stone St. @ 2 p.m.
- 3... Ellinwood Hospital Foundation 2nd Annual Christmas Gala, St. Joseph Parish Center, Ellinwood @ 5 p.m.
- 7... Chamber Coffee: Family Crisis Center, 1924 Broadway Ave. @ 9 a.m.
- 10... BCHS Annual Open House, "Ghosts of Christmas Past", 85 S. Hwy 281 @ 1 p.m.
- 10... Kansas Wetlands Education Center Craft Series-Christmas Jewelry, 592 NE K-156 Hwy @ 2 p.m.
- 11... Touched by Cancer Support Group, Heartland Cancer Center, 204 Cleveland St. @ 4 p.m.
- 12... Dine for Dolly, Freddy's Frozen Custard, 3008 10th St @ 10:30 a.m.
- 13... Dine United Holiday Luncheon, Stoneridge Country Club, 1438 24th St., @ 11:30 a.m.
- 13... BCYP Party With a Purpose, Central Kansas Whitetails Lodge, 656 W Barton Co. Rd @ 6 p.m.
- 14... Chamber Coffee: Golden Belt Community Foundation, Prince of Peace Parish Center, 4100 Broadway Ave. @ 9 a.m.
- 18... Cheyenne Bottoms Christmas Bird Count, Kansas Wetlands Education Center, 592 NE K-156 Hwy @ 8 a.m.
- 19... Central Kansas Partnership Meeting, Barton County Health Department, 1300 Kansas Ave @ 11:00 a.m.
- 21... Chamber Coffee: Community Bank of the Midwest, 2220 Broadway Ave. @ 9 a.m.
- 28... Chamber Coffee: Spectrum CPA Partners LLC, 1400 Polk St. @ 9 a.m.

RECURRING EVENTS:

Visit the Chamber for your copy of the Holiday 2017 Events Calendar

Santa's Schedule & Santas Around the World, 1221 Main, Thursdays & Fridays: 4-6 p.m.; Saturdays & Sundays: 1-6 p.m.

2017 Christmas Craft Mall LLC, Central Baptist Church, 3301 Lakin, November 18th - December 28th. Monday thru Saturday 9 a.m. to 7 p.m. and Sunday 1-6 p.m.

GB Chamber Member Appreciation Week, December 18-22nd

Dine United October 12, 2017 - December 28, 2017

Great Bend City Council Meetings, 1st & 3rd Mondays, City Hall, 1209 Williams @ 7:30 p.m.

Barton County Commission Meetings, Every Monday, Courthouse, Rm. 106, 9 a.m.



Farmers Bank Lights Up Children's Lives

Help celebrate the 26th year that Barton County has generously supported this Light Up a Child's Christmas community project, making the season brighter for children in need and their families. The public is invited to stop by either Farmers Bank and Trust location, to select a child with a personalized wish-list for toys, clothes and necessities. Donate or adopt a child and please return gifts by December 6th. Make a difference in a child's life this holiday season with your gift of caring and Light Up a Child's Life!

City of Great Bend Publishes FREE Holiday Guide

The City of Great Bend has compiled and published a 2017 Holiday Events Calendar, available FREE at the City Offices or from the Chamber Office located in downtown Great Bend. Other stores and locations are distributing them as well. The booklet serves as an events calendar, as well as a visitors resource with information on all the happenings related to shopping, dining, and exploring during the holiday season. Pick yours up today, or download pages from the booklet from the Explore Great Bend facebook page.



Save the Date!

February 17, 2018

Great Bend Events Center

96TH ANNUAL BANQUET

GREAT BEND CHAMBER OF COMMERCE & ECONOMIC DEVELOPMENT

celebrating the

PART

of

COMMUNITY

CONNECT
DINE
CELEBRATE

We Have Moved...

to 4801 10th Street behind Playa Azul



(620) 792-7868

NO PRESCRIPTION REQUIRED

OTHER EXCITING CHANGES:

New Program for Balance
& Fall Prevention

New Program to Promote Speed
& Agility for Student Athletes

Continued Expansion of Existing Services

Strength • Recovery • Fitness • Progress

ElderCare Launches Meal Sponsorship Program

A program new to most of ElderCare's service area allows participants to provide nutritious meals for the elderly, while helping the non-profit agency offset rising costs. The meal-sponsorship program is open to any business or individual at ElderCare's 40 Senior Centers in its 28-county territory, said Executive Director Brandi Gruber. The counties are from central Kansas to the Colorado and Oklahoma borders.



"Those who donate will have the satisfaction of providing seniors with healthy meals, while helping us offset ever-increasing food costs," Gruber said. "And they will help ensure that our programs will continue at our Senior Centers."

"Our income from federal and state grants has remained the same during the last decade, while food and other costs have increased," Gruber noted. "Meal sponsorships can help bridge this financial gap. If we don't have donations and/or funding increases, our programs cannot survive."

Sponsors have choices about how they can help. It could be for one day, once a month or quarterly. For example, an average of 50 people eat at Great Bend's Senior Center each weekday. Since the cost for each meal is \$5.50, \$275 would cover a day. The amount will vary at each Senior Center, depending on the average number of meals served.

"Sponsors could do this just one time, or they could make it a regular part of their charitable giving," Gruber commented. "This would be a wonderful gesture during this Thanksgiving and Christmas season, and maybe even part of a New Year's Resolution to make a difference in our senior citizens' lives."

In addition, business sponsors can raise awareness about their products and services. They may join Senior Center patrons at mealtime; provide a quick overview of their businesses; hand out business cards and brochures; and post a banner at the Senior Center. For more information, contact Gruber by calling 620-792-5942.

Nex-Tech's Riat Published in Executive Magazine

Steve Riat, Director of Sales at Nex-Tech, was recently published in Channel Executive magazine. The magazine showcases best business practices from leaders in the greater IT channel community.

In "The Forgotten Sales Step," Riat suggests that those in technology sales remember to assist the customers in making a purchasing decision. "We can get too focused on speeds and feeds, or price and installation. While those are definitely critical, we can't assume the customer understands the best solution for the needs of the business."

Riat suggested starting by asking your lead how the company will make this important decision. Subsequent questions work to qualify the customer and ensure they are comparing your solutions to other companies and products. Put yourself in the position of the customer and recall how you have made your own purchasing decisions. Paint a picture of what a successful project looks like.

Riat has more than two decades of business technology experience working directly with companies from around the world and brings the best back to the Midwest. Learn more, or reach Riat through the Nex-Tech website, www.nex-tech.com.



Entertaining Family?

- ✓ You take care of their plans.
- ✓ We'll take care of their comfort.



BEST WESTERN Angus Inn
2920 10th Street • Great Bend, KS
Take a virtual tour at bwangus.com!
620-792-3541

Enjoy Fine Dining at The Page

- ✓ Conveniently located next door!
- ✓ Banquet rooms and catering



Barton County Young Professionals Spotlight - Party With a Purpose Dec. 13th

Grab a friend and join us for the 7th Annual Young Professionals Christmas Party on Thursday, December 13th from 6-8 p.m. The holiday party is one of the many ways YP members give back to the community, and this year's event is no exception!

The "party with a purpose" will serve as a venue for BCYP members to create a "New Year" package for a child in need in Barton County. This year's event is jointly sponsored by Central Kansas Whitetails, Straub International and Bauer, Pike, Bauer & Wary, LLC. BCYP will build a "New Year" package for a child served by Central Kansas CASA, Inc. Attendees are asked to bring a pair of pajamas (non holiday) and socks for a child, sizes will be provided following your RSVP.

After dropping off your contribution to these special packages, our event sponsors invite you to enjoy a fun and festive evening at "The Lodge" located at 656 W. Barton County Road (5 miles west of 10th & Patton). Food & beverage will be provided - and the cabin atmosphere is hard to beat!

If you plan to attend, please RSVP to Special Events Team



member Megan Hammeke (bartonyp@gmail.com). If we run out of PJ's, there will be other ways to participate and give! Anyone 21 to 40(ish) years of age who lives in the Barton County Area is welcome and encouraged to attend this free event! So invite a friend! If you'd like more information about the YP group, visit www.bartonyp.com. Like our Facebook page, and join our Facebook group!

Reminder of BCYP Membership Requirements: To remain in good standing as a member of the Barton County Young Professionals group, you must attend at least two events per year with one being service or leadership focused. Learn more, or join, at www.bartonyp.com. Or RSVP to attend this event!

Christmas Craft Mall Open this Month

The 2017 Christmas Craft Mall LLC will be located at 3301 Lakin (Lakin & Harrison) Central Baptist Church. Perfect for your holiday shopping, the Christmas Craft Mall features a wide variety of local artisans and handmade items. The Christmas Craft Mall is open through December 28th, Monday - Saturday 9 am to 7 pm, and Sunday 1 pm to 6 pm.

Nominate a NextGen Leader of the Year

For decades, the Great Bend Chamber of Commerce & Economic Development has been privileged to annually recognize a Business of the Year and a Citizen of the Year for their impact on the Great Bend business community. Established in 2012, the NextGen Leader of the Year Award aims to recognize a particular individual's service to the community as an up-and-coming leader. One of the criteria for this award is that the recipient must be nominated by someone else - an employer, a coworker, a friend, a spouse, or another who can attest to their commitment to the betterment of the Great Bend community. Additional criteria includes:

- Nominee must be affiliated with a member of the Great Bend Chamber of Commerce & Economic Development.
- Nominee must have lived in the Great Bend service area for at least three years.
- Nominee must be seen as a leader in their work environment, as well as in the community.
- Nominee must be creating a meaningful impact in the community and be seen as a rising leader.

Nominations will be collected until December 11th, and will then be reviewed by an anonymous selection committee. The winner will be announced during the Chamber's Annual Meeting & Banquet on Saturday, February 17, 2018. Nominations can be submitted through the convenient **ONLINE FORM**, which can be accessed on the Chamber's facebook page.

Cleaning Company Announces Launch

A new company recently announced that it would be launching in the Great Bend area, and the response has been very positive to say the least.

Have it Maid Cleaning Service is a new residential and commercial cleaning company serving Great Bend and a few of the surrounding communities as well. Leading the charge with the new enterprise is experienced housekeeper Tabitha Dunn.



"Families are so busy with school activities, family events, and other responsibilities that I have seen a huge demand for professional cleaning over the last few years," Dunn says. "Our goal is to make it affordable and accessible for every family to have help with their routine chores."



Homeowners can choose between three plans depending on the size of their home and the scope of work they would like completed each week. From there, they choose how often they would like Have it Maid to help them clean, either weekly or bi-weekly.

In addition to residential cleaning, Have it Maid will also be offering commercial office cleaning as well. "Our clients can rest assured that we will provide them with a different level of service than they are accustomed to. We promise our commercial clients reliability and quality, and we stand behind that promise. Plus, our company is insured and employees are background checked which takes the liability off of the business we are cleaning."

Other services offered will include one-time deep cleaning projects for landlords, realtors, event planners, etc. Homeowners can also hire the professional staff at Have it Maid to help with deep cleaning projects periodically.

Learn more by calling 620-805-3095 or visit www.haveitmaidcleaningservice.com. You can also find them on Facebook.

**1 FLEA
COULD BITE ME
400
TIMES A DAY
620-792-1265**



**PROTECT YOUR
PET AT AMC**



Phone: **620-792-5700**
1905 19th Street in Great Bend, Kansas

Family Practice & Mental Health Services

Preventative Care
Prescription Assistance
Diabetes Management
Evening Appointments
Open to Everyone
Bilingual Staff

All Insurance Accepted
Including Medicare, Medicaid & KanCare

"We Care About Your Health"
www.HeartofKansas.com

Cherry Village Excels at Walk to End Alzheimer's

Cherry Village Benevolence was recognized recently for two major accomplishments on behalf of the recent Walk to End Alzheimer's. The long-term-care facility's 27-member team raised \$2,143, which is more than any other team. In addition, Jamie Hatfield, Cherry Village certified nurse's aide, was a top money raiser; she collected \$352.

"We are so proud of our colleagues who participated in this important event," said Erin Lewis, director of marketing. "Everyone pulled together by sharing their time and talent."

"We see first-hand the devastating effects of Alzheimer's on residents and their families," she continued. "The need for Alzheimer's care is increasing and we will do all we can to provide high-quality care and support."

Cherry Village personnel sold candles, Yoder meat sticks and t-shirts as part of their fundraising efforts. All proceeds from the Alzheimer's Walk in Great Bend are earmarked for the Central and Western Kansas Chapter of the Alzheimer's Association, said Denise Vann, outreach coordinator.

"Cherry Village's enthusiasm each year for this Walk is vital to our success," Vann said. "Their hospitality included hosting our kick-off event, and helping with registration and other logistics."

Local Walk teams raised a total of \$14,456, with 21 teams and 194 walkers. "Those who donated their time and money can be assured their generosity will be felt in Barton and many other area counties in our chapter," Vann noted.

For example, Vann recently brought on-site training to Cherry Village staff members. Her session focused on ways health-care professionals and other caregivers can use activities to engage people with Alzheimer's.

Vann noted she organizes many such educational classes for a variety of entities. In addition to long-term-care facilities, these include colleges, public health departments, senior centers and libraries.

Donations on behalf of the Walk are being accepted until Dec. 31. For more information or to donate to Alzheimer's education and research, contact Vann by calling 316-267-7333. The address is 1820 E. Douglas, Wichita, Ks. 67214.



New Sociology Instructor at BCC Touts Program

Kurt Konda is halfway through his first semester as the new sociology instructor at Barton Community College, and he said it's everything he expected. Konda said he thinks of sociology as the mother science, as it pulls from psychology, economics, political science, anthropology and other sciences. He said the broad spectrum of topics covered makes a degree in sociology adaptable to an individual's interests and goals, including academia, government, data analysis, counseling, teaching, human resources, marketing and more.

Konda's own background reflects the adaptability of the degree. He earned his first bachelor's degree in history in 2001, then later earned a master's in sociology in 2005. He spent time working in the Department of Public Health and Preventative Medicine at the University of Kansas School of Medicine in Wichita until the summer of 2017 when he accepted the full time teaching position at Barton. "My work at KUSM was very much applied sociology with a strong emphasis on research," he said. "During that time, I also worked as an adjunct before leaving for the full-time position here. Barton is a great place to be," he said. "People can stop in any time or email me. I'm happy to talk about sociology."



United Way Campaign - Confident for 2018

The United Way of Central Kansas is heading into December strong and confident. With many of our Workplace Campaign presentations completed, we are halfway to our Community Commitment of \$275,000. The success of this campaign is only possible with the support of local businesses, organizations, and individuals who see the benefit of what United Way does in Barton & Pawnee Counties. Not only does UWCK financially support 23 local non-profit organizations, but they have also been instrumental in bringing numerous Community Impact Programs to the area as well. A few of these projects include Reality U, Dolly Parton's Imagination Library, Literacy Kits to Pre-K students, the Born Learning Trail, and Box of Love. With 99% of all donations staying local, you can rest assured that your money is staying in your community and it is being used to help your neighbors, friends, and family.

United Way, in partnership with Stoneridge Country Club, will be hosting a Holiday Luncheon on December 13th from 11:30-1:30 pm. This is a great opportunity for you to get your staff, friends, club, or organization together for a Holiday celebration without having to worry about planning the event. Visiting Guest Chef David, graduate of the Baltimore International Culinary College has put together a delectable lunch, the full menu can be found on our Facebook page.

Tickets are only \$20.00 per person and limited to 150 seats. A portion of the ticket price benefits UWCK. Contact us at unitedwaycentralks@hotmail.com, call 620-792-2403, or reserve tickets online at www.uwck.org/holidaylunch!

If you haven't yet made a tax-deductible donation to UWCK, there is still time to contribute to our 2018 Campaign and be a part of us reaching our Community Commitment of \$275,000. Mail your donation to 1125 Williams, Great Bend, KS 67530 or donate online at uwck.org.

LIVE UNITED



Barton Offers New Scale Tech Program

In January 2018, Scales Technician classes will begin as Barton Community College launches its newest program. The program is completed in one semester of vigorous training and preparing students for the weights & measures industry upon completion. Scales are a vital part of agriculture and many other commercial businesses, but installing, maintaining and certifying them is a job easily overlooked by the public. They are used every day for items like grains, fertilizers, feedlots, railroad cars, grocery stores, packing companies, pawn shops and much more.

The new program consists of 25 credit hours in one semester with students in class for extended periods of time. Students focus on a course for 1-2 weeks, accomplishing the same number of hours put in throughout a traditional semester. Having a CDL program at Barton is a significant asset to the Scales Technician certificate, providing another element for their resume.

For information, contact Vic Martin at martinv@bartonccc.edu or (620) 792-7207.

Community Bank Celebrates 20th Anniversary as Locally Owned Institution

In February, 1997, two young professionals were having a lunch meeting at a local sandwich shop. The conversation somehow turned to the news that a local Great Bend bank was experiencing difficulty, and was looking for a new management team. They both agreed that this sounded like an opportunity to expand their careers in the banking industry, and to exercise their knowledge and abilities in an administrative role. It was on that day in 1997 that the partnership between Richard Schenk and Steven Sell took shape, and with the help of a new Board of Directors and Stout and Deines Bank Consulting, they moved through the regulatory red tape. In August of 1997, they gained approval to establish Community Bank of the Midwest as a locally owned bank.

Even though Community Bank of the Midwest has been here for only 20 years, it has deep roots in Great Bend. The bank charter began when Collyer State Bank was established in 1906. The bank changed from a state charter to a national charter, becoming First National Bank of Collyer from 1920 to 1963. It was in 1963 that Dale Weller and Leonard Harper, both of Great Bend, became involved and the bank was relocated to WaKeeney, Kansas. The bank returned to a state charter as First State Bank of WaKeeney from 1963 to 1992. The name was changed to Interstate Bank in 1992, and the home office was then relocated from WaKeeney to Great Bend, at its current location of 2220 Broadway Ave.

Early on, Steve and Rick had to make some difficult decisions. They had to close a branch in McCracken, Kansas to reach a deal

to sell the branch in Hunter, Kansas. The branch in Otis, Kansas was kept intact, but the total assets of the bank shrank from \$10 million dollars to a low of \$8 million dollars with a staff of only 6 employees. All of that is now just a memory.

In November of 2001 Community Bank opened its instore branch facility at the 10th Street Dillons store. In May of 2004, the bank completed an extensive remodel of its drive through lanes and office space at its Broadway location. In June of 2007, the bank was granted approval to open a branch facility at 211 E. Santa Fe in Ellinwood. In January 2011 a Loan Production office was opened in Ness City and was then became a full service branch in April 2011.

Both men will attest, the past 20 years have flown by quickly with a great amount of change. The bank is now \$175 million dollars in size with 40 employees. This success story was made possible with the knowledge and help from its local Board of Directors, its loyal employees, and of course its loyal customer base.

"It is one thing to advertise you are a community bank, but when 'community' is part of the name, you are 100 percent committed to exceeding the expectations of our customers and the communities we serve," Schenk says. "It's our way of doing business today and tomorrow."



ENROLL NOW!

Indoor Soccer Leagues
for Kindergarten thru
Adults forming now!

Early Bird
Registration
begins January 8.

Coaches
Needed!



GreatBendRec.net
1214 Stone Street
620-793-3755

Registration Deadline January 26, 2018



Golden Belt Community Foundation Explains Transfer of Wealth & New Forever Initiative

As executive director of the Golden Belt Community Foundation (GBCF), Christy Tustin has been visiting with area residents about the new Forever Initiative program. Inevitably, one topic is always part of the conversation. That topic is Transfer of Wealth, which refers to the vast amounts of estate money that leave local communities when heirs no longer live here.

“Many grown children move away and are not coming back as often,” Tustin said. “When their parents pass away, the estate’s assets leave the central Kansas community.”

“This not only affects local charities, it also has a negative impact on the local community,” she added. “It is the full-circle effect. We hope to turn this around by raising awareness.”

When just a small portion of an estate stays in local communities, it would help everyone to a certain degree, Tustin noted. “What if we could capture 5 percent of this wealth? It could mean more charitable donations and more money circulating in the community,” she noted. “And if that money is placed in Golden Belt Community Foundation endowments, the funds will grow and be available for vital social services and quality-of-life projects today and far into the future.”

“This is one reason we recently launched our Forever Initiative,” Tustin continued. “The goal is to help build community-wide or county-wide endowments, thereby creating permanent financial resources right here at home.”

This new program is available in Pawnee, Rush and Stafford counties and all communities within those counties. A total of \$300,000 in matching funds is available for gifts to GBCF endowment funds that can be used for social-services needs and quality-of-life projects. These projects could involve parks, playgrounds, libraries, schools, beautification efforts and historical preservation.

To illustrate the scope of the Transfer of Wealth issue, Tustin cited figures analyzed by the Kansas Association of Community Foundations and the Kansas Health Foundation.

Between 2010 and 2019, Barton County is projected to transfer \$757,983,410 from one generation to the next; and 5 percent of that is \$37,899,171. Pawnee County stands to transfer \$257,956,348. Five percent of that is \$12,897,817.

In Rush County, the potential transfer is \$92,272,255; 5 percent of that is \$4,613,613. And Stafford County’s potential transfer is \$126,512,036 and 5 percent comes to \$6,325,602. These are the four counties in the GBCF’s service territory.

The figures also indicate \$79 billion will transfer from one generation to the next in Kansas by 2020. Five percent is \$3.9 billion. Wichita State University’s Center for Economic Development and Business Research conducted the study.

When Tustin speaks to people with questions about endowments, she emphasizes the many long-term benefits to a community. “The principal amount in an endowment is permanently protected, while the fund’s income is used to support charitable causes within a designated area,” she explained. “As the endowment grows, the amount available to your community grows.”

For more information, contact the GBCF, 1307 Williams, by calling 620-792-3000. Its website is www.goldenbeltcf.org. At \$21 million in total assets and more than 170 funds under management, the Golden Belt Community Foundation has been connecting people who care to causes that matter since 1996. Golden Belt Community Foundation exists to provide non-profit organizations in central Kansas with a permanent source of support and to serve as a vehicle for charitable giving for donors.

GBCF serves the counties of Barton, Pawnee, Rush, and Stafford. For more information about Golden Belt Community Foundation, call (620) 792-3000 or visit their website at www.goldenbeltcf.org.



CONCRETE SERVICE
221 Baker St.
Great Bend, KS 67530

For ALL Your
CONCRETE CONSTRUCTION
Needs!



Call Kyle Walter for an Estimate!
Office: 620-792-2558
Mobile: 620-639-1026

The Reserves at Trail Ridge Celebrate Grand Opening of Phase Two Apartment Units

The grand opening and ribbon cutting to celebrate Phase II of The Reserves at Trail Ridge took place on Monday, November 20, 2017 with many special guests in attendance, including Congressman Roger Marshall. In addition, Dennis Mesa with the Kansas Housing Resource Corporation, representatives from the Midwest Housing Equity Group (MHEG) and McPherson Construction were also present to help mark this milestone for the Great Bend Community.

"Throughout Kansas, quality, affordable housing is an ongoing challenge for many communities. Finding a solution to affordable housing goes hand-in-hand with resolving our lack of skilled labor" said Congressman Roger Marshall.

Phase II of the project includes 48 units of both 1 and 2 bedroom living quarters. The accommodations and geographic location are ideal for many potential renters because of walking distance to shopping, schools and healthcare. The complex includes a 24/7 fitness center, club house, playground and basketball court.

Housing has been a top priority for the Great Bend City Council for several years. These are the first apartments to be built in the Great Bend community in over 20 years. While the construction oversight was provided by McPherson Construction with many local subcontractors, this project required a team effort from numerous entities. Overland Property Group based in Leawood, Kansas is the owner and developer of The Reserves at Trail Ridge, the additional team consists of - MHEG, Kansas Housing Resource Corporation, The Great Bend Chamber and Economic Development, and The City of Great Bend.

"Overland Property Group is proud to be a member of the Great Bend community and thrilled to open the second phase of the Reserves at Trail Ridge in Great Bend. Housing, and specifically affordable housing, is one of the basic cornerstones to a growing economy so we couldn't be happier to be a part of Great Bend's continued growth" said Matt Gillam, VP of Development / Partner. Congratulations to all of the partners who made this project a reality!



GREAT BEND CHAMBER OF COMMERCE & ECONOMIC DEVELOPMENT

Welcome to Our NEW Chamber Members

HAVE IT MAID CLEANING SERVICE

Tabitha Dunn - Project Manager
Great Bend, Kansas
620-805-3095
www.haveitmaidcleaningservice.com
Cleaning Services - General

Z'S LIQUOR MART

1906 Main Street
Great Bend, Kansas
620-792-8470
Liquor Stores

JUST IN TIME REMODELING

Justin Mawhirter - Owner
2817 9th Street
Great Bend, KS 67530
620-617-1714
www.justintimeremodeling.com
Construction

Club 1 Fitness Month of Giving Benefits Catholic Charities

Last month, Club 1 Fitness hosted its annual "Month of Giving" promotion where gym members were invited to bring in donations for a local charity.

This year, the locally owned fitness facility collected supplies for the Catholic Charities non-food pantry which helps people in need with essential items for personal hygiene, baby formula and diapers, and more. Donations were delivered on November 28th (Giving Tuesday) and all together, several hundred pounds of supplies were collected. Learn more at club1fitness.net.



CELEBRATING OVER **51 YEARS**
OF SERVING PEOPLE WITH
DEVELOPMENTAL DISABILITIES!

There is a Difference.

EARLY EDUCATION
CASE MANAGEMENT • DISABILITY SUPPORTS
RESIDENTIAL ASSISTANCE
COMMUNITY EMPLOYMENT
RECYCLING & MANUFACTURING
GENERAL PUBLIC TRANSPORTATION
WESTSIDE MARKET

620-792-1321
WWW.SUNFLOWERDIV.COM

Hutchinson Clinic Physicians Serving the Great Bend, Hoisington & Ellinwood Areas

GREAT BEND:

Hutchinson Clinic Great Bend / 3715 6th Street
Dr. Jamil Ahmed, Cardiologist
Tricia Gilligan, PA, Pulmonology
Natalie Williams, PA, Pulmonology

ELLINWOOD:

Ellinwood Medical Clinic / 611 N. Main
Dr. Lindsay Nordwald, OBGYN

HOISINGTON:

Clara Barton Medical Clinic / 250 W 9th St
Dr. Geoffrey Kraemer, Podiatrist
Dr. Costy Mattar, Cardiologist
Dr. Christine Sanders, OBGYN
Dr. Curt Thompson, Interventional Radiologist

Exceptional Care Close to Home



Call for an appointment: **620-669-2500**

CHAMBER COFFEE SCHEDULE

Every Thursday | Doors Open at 9am | Program at 9:30am

December 7, 2017
FAMILY CRISIS CENTER
1924 Broadway in Great Bend

The Family Crisis Center, Inc., based in Great Bend, Kansas, provides advocacy and support to all survivors and secondary victims of domestic and sexual violence, child abuse and neglect while encouraging social change through awareness, education and prevention. From our 24-hour crisis hotline to supportive services to professional training, we offer hope and healing for families experiencing domestic and sexual violence, child abuse and neglect.

December 14, 2017
GOLDEN BELT COMMUNITY FOUNDATION
Prince of Peace Parish Center | 4100 Broadway in Great Bend

We celebrated Giving Tuesday, now join Golden Belt Community Foundation as we give back the \$25,000 in matching funds to local charities. We will highlight the impact of this year's Giving Tuesday event and recognize top organizations and donors that made this event possible.

December 21, 2017
COMMUNITY BANK OF THE MIDWEST
2220 Broadway in Great Bend

Community Bank is the only locally-owned bank in Great Bend, providing checking, savings, lending, and online banking services to area residents. Holiday entertainment will be provided by GBHS Madrigal Singers. We hope you'll join us!

December 28, 2017
SPECTRUM CPA PARTNERS
1400 Polk Street in Great Bend

Spectrum CPA Partners offers bookkeeping, payroll, financial reporting, tax return preparation, financial consulting, and now human resources consulting. Spectrum CPA Partners has six QuickBooks ProAdvisors on staff, and is a proudly Endorsed Local Provider for Dave Ramsey. Located at 1400 Polk Street in Great Bend, the firm is open weekdays from 8 a.m. to 5 p.m. To set up a consultation for accounting or HR services, call 620-792-5378. For more information, visit www.spectrumcpa.com.

January 4, 2018
HABITAT FOR HUMANITY: BARTON COUNTY AREA
Spray Holt Family Board Room | 1125 Williams Street in Great Bend

Seeking to put God's love into action, Habitat for Humanity brings people together to build homes, communities and hope. Tickets will be on sale for the "Barton County's Got Flavor" fundraiser coming up January 20, 2018.



3307 10th Street • Great Bend, KS 67530
McDonald's
is providing coffee for Chamber of Commerce coffees.