



JANUARY 2020 • VOLUME 99 NO. 1

OUTLOOK BUSINESS JOURNAL

A MONTHLY PUBLICATION OF THE GREAT BEND CHAMBER OF COMMERCE AND ECONOMIC DEVELOPMENT

2020 Board of Directors Set, Executive Officers Elected

With the changing of the calendar year comes a change in leadership and new set of goals for the Great Bend Chamber of Commerce Board of Directors. — Continued on Page 2



AJ Chrest,
2020 Board Chair



Pete Wesner,
1st Vice Chair



Jerry Renk,
2nd Vice Chair



Taylor Calcara,
Past Chair



Austin Cohan,
Treasurer



Glenna Achatz



Todd Armatys



Rob Bauer



Scott Dewerff



Logan Garrett



Nick Klug



Julie Kramp



Teresa Mazouch



Quenla McGilber



Jesse Mock



Shelly Peacock



Jon Prescott



Sonya Rein



Douglas Reiser



Lacey Schofield



Julie Spray



Rick Taylor



Todd Vanskike

We'll take care of this...

so you can take care of that!

*The technology experts*

**Trust us with your
business technology
solutions, so you
can focus on
what matters most.**

*Receive a free technology consultation!**Contact us today.*

**nex-tech.com/business
800-588-6649**



THE UNIVERSITY OF
KANSAS HEALTH SYSTEM

**Committed to
caring for the
Great Bend
community.**

Providing the Great Bend community greater access to the resources of the only academic health center in Kansas. Together, we are committed to ensuring the continued well-being of this community, close to home.

kansashealthsystem.com/community

2020 Board of Directors

— Continued from Page 1

While the main areas of focus for the Chamber remain Advocacy for Business, Marketing & Promotion, Investment in the Future & Member Services, new initiatives or goals seem to emerge based on the leadership of the executive committee to tackle issues or enhance the Chamber's role in the community. The Chamber embarks on each New Year with optimism and excitement for what new programs or services might emerge for their members.

The 2020 Executive Committee will be made up of AJ Chrest (Aflac) as Chairperson, Pete Wesner (CUNA Mutual Retirement Solutions) as 1st Vice Chair, Jerry Renk (American State Bank) as 2nd Vice Chair, Taylor Calcara (Watkins Calcara Chtd.) as Immediate Past Chairman, and Austin Cohan (Adams Brown Beran & Ball) as Treasurer.

In addition, the Chamber welcomes six new members to its diverse board, representing a wide range of industries and backgrounds. Beginning three-year terms are Scott Dewerff (KanEquip), Quenla McGilber (JOYfulHouse Inc.), Douglas Reiser (Central Kansas Surveying & Mapping, Inc.), and Todd VanSike (Golden Belt Bicycle Company). Representing the Chamber Ambassadors in 2020 is Sonya Rein (Edward Jones), and representing Barton County Young Professionals is Nick Klug (Corrosion DC, Inc.).

Continuing their service on the board is Glenna Achatz (Coldwell Banker Sell Real Estate), Todd Armatys (Edward Jones), Rob Bauer (Bauer, Pike, Bauer, Wary & Carroll LLC), Logan Garrett (G-B Tire, Inc.), Julie Kramp (The Center for Counseling), Teresa Mazouch (Golden Belt Community Foundation), Jesse Mock (The University of Kansas Health Systems), Shelly Peacock (TCI Answering Service), Jon Prescott (Sunflower Diversified Services), Lacey Schofield (Best Western Angus Inn), Julie Spray (The Fieldhouse), and Rick Taylor (Nex-Tech). Ex-Officio board members are Khriston (Great Bend Public Schools), Jennifer Schartz (Barton County Commission), Dr. Carl Heilman (Barton Community College), Christina Hayes (Great Bend Convention & Visitors Bureau), and Tory Arnberger (Kansas Legislature). Another ex-officio seat will be occupied by a Great Bend City Council member once that representative has been selected after the New Year.

Volunteers who have finished their terms on the board of directors include Haley Acker (BCYP & Fuller Industries), Gaila Demel (United Way of Central Kansas), Casey Harbour (Watco Companies), Diann Henderson (Great Bend Recreation Commission), Troy McFarren (Haz-Mat), and Curtis Wolf (Ambassadors & Kansas Wetlands Education Center).

The Chamber also looks forward to recognizing the service and dedication of their retiring board members at the 98th Annual Chamber Banquet scheduled for Saturday, February 22nd.

See the complete listing of Chamber Board and Staff on our website: www.greatbend.org.

Barton Honors Employees for Years of Service



Barton Community College recently recognized employees who celebrated landmark years during a forum in early December. They were (from left) Assistant Baseball Coach Brett McBride, five years; Instructor & Coordinator of Information Technology Cristi Gale, 10 years; Head Women's Soccer Coach Ousmane Camara, five years; English Instructor Jaime Abel, 10 years; Nursing Remediation & Adult Healthcare Programs Coordinator Sara Hoff, five years; Facility Management Secretary Heather Helvie, 15 years; Academic Advisor Kristan Connell, five years; Coordinator of Assessment & Instructor of Mathematics Jo Harrington, 15 years; Nursing Instructor Renae Skelton, five years; Art Instructor Bill Forst, 20 years; Chemistry Instructor Amanda Alliband, five years; Coordinator of Enterprise Applications & Sr. Systems Analyst Kevin Murphy, 20 years; Nursing Instructor Karla Johnston, five years; Advisement Coordinator Karen Kratzer, 25 years; Head Men's and Women's Golf Coach Doug Kaiser, 30 years and Assistant Director of Nursing & Simulation Coordinator Brenda Glendenning, 30 years. Not shown are Promotions Specialist Dee Ann Smith, 35 years; Central Kansas Upward Bound Project Director Patrick Busch, 15 years; Coordinator of Enterprise Applications Ronnie Dean, 15 years; Head Tennis Coach Lyle Stickney, 10 years and Medical Lab Technician Instructor Dana Weber, 10 years.

Xpress Wellness Urgent Care Celebrates Grand Opening of Brand New Great Bend Location

Xpress Wellness Urgent Care is proud to announce its expansion of world-class urgent care centers to the Great Bend, KS community. The new urgent care center is located at 3800 10th St. and began seeing patients December 16th, 2019. Great Bend will be the third Kansas location for Xpress Wellness as part of its continued effort to increase access to high quality medical care in Kansas and Oklahoma communities.

Xpress Wellness offers convenient access to urgent care and occupational medicine services for non-life threatening conditions on a walk-in basis without the need for an appointment. Xpress Wellness clinics are open seven days per week, allowing patients to enjoy convenient evening and weekend access to healthcare. Staff members at Xpress Wellness are trained to deliver high quality care in the most time-efficient manner for the patient. In addition, Xpress Wellness focuses on providing a best in class patient experience, convenient check-in options, and reduced wait times. The online check-in feature is accessible through the company's website, www.XpressWellnessUrgentCare.com.

Xpress Wellness expedites its delivery of care using eight private exam rooms and a procedure room for minor emergencies. Onsite services including computerized x-ray, lab testing, and EKG allow for quick point of care testing and rapid diagnosis. Adults and children will find comprehensive medical care services for conditions such as the common cold, flu, sprains/strains, cuts/scrapes, allergies, infections, physicals, and much more. Employers will also enjoy services such as pre-employment physicals, DOT physicals, spirometry, drug and alcohol testing, and treatment for work-related injuries. Most insurance plans will be accepted, and a competitive self-pay option is available for uninsured patients. Xpress Wellness currently has a total of ten locations in Kansas and Oklahoma with plans to open eight more by the end of 2019.



AMC Hosts "Golden Ticket Giveaway" for Charity

Animal Medical Center, the area's leading small and large animal veterinary clinic, recently launched a charitable project they are calling a "Golden Ticket Giveaway" to benefit Chasing Tails Rescue and the Golden Belt Humane Society. Only 100 tickets will be available for the first 100 people to make a \$100 donation to the cause.

After all 100 tickets have been sold, a drawing will be held, hopefully right after the first of the year. The grand prize winner will take home \$3,000 cash and a second place winner will take home \$1,000 cash. The remaining proceeds will be split between the two nonprofit organizations. Anyone interested in securing one of the Golden Tickets should stop by 622 McKinkley in Great Bend, or call their staff at 620-792-1265.



Outlook Business Journal

A monthly publication of the

GREAT BEND
CHAMBER OF COMMERCE

1125 Williams,
Great Bend, KS 67530
Phone: 620-792-2401
Fax: 620-792-2404

Web address: www.greatbend.org

EXECUTIVE COMMITTEE

Chairman

AJ Chrest, Aflac District Coordinator

1st Vice Chair

Pete Wesner, CUNA Mutual Retirement Solutions

2nd Vice Chair

Jerry Renk, American State Bank

Immediate Past Chair

Taylor Calcara, Watkins Calcara Chtd.

Treasurer

Austin Coyan, Adams Brown Beran & Ball

BOARD OF DIRECTORS

Glenna Achatz

Coldwell Banker Sell Real Estate

Todd Armatys

Edward Jones

Rob Bauer

Bauer, Pike, Bauer, Wary & Carroll, LLC

Scott Dewerff

KanEquip

Logan Garrett

G-B Tire, Inc.

Nick Klug

Corrosion DC, Inc / Barton Co. Young Professionals

Julie Kramp

The Center for Counseling

Teresa Mazouch

Golden Belt Community Foundation

Quenla McGilber

JOYfulHouse Inc.

Jesse Mock

The University of Kansas Health Systems

Shelly Peacock

TCI Answering Service

Jon Prescott

Sunflower Diversified Services

Sonya Rein

Edward Jones / Chamber Ambassadors

Douglas Reiser

Central Kansas Surveying & Mapping Inc.

Lacey Schofield

Best Western Angus Inn

Julie Spray

The Fieldhouse

Rick Taylor

Nex-Tech, Inc.

Todd VanSike

Golden Belt Bicycle Company

EX-OFFICIO

TBD, Great Bend City Council

Christina Hayes, Great Bend CVB

Jennifer Schartz, Barton County Commission

Dr. Carl Heilman, Barton Community College

Khris Thexton, USD 428

Tory Arnberger, Kansas State Legislature

CHAMBER STAFF

Megan Barfield, President/CEO

Lee Ann June, Communications & Program Coordinator

Angie Hicks, Business Office Manager

FREE E-WASTE RECYCLING



Does your *residence* or *business* have *electronics* in need of *safe and responsible recycling*?

Computers & Monitors
Printers
Fax Machines
Laptops
Televisions
Video Game Consoles
DVD Players
VCR's & Cameras
Cell Phones
Telephone Equipment
...and More!

DROP-OFF LOCATIONS

Rosewood
Maintenance Building
2200 Main St., Great Bend
Mon - Fri, 9:00 am - 4:00 pm
Rosewood Bargain Barn
1215 Main St., Great Bend
Mon - Fri, 10:00 am - 6:00 pm

The Mission of Rosewood ecycle is to provide work-related training and employment opportunities to adults with developmental disabilities.

By recycling with us, you benefit your community, the environment, and you help create jobs for individuals with developmental disabilities.

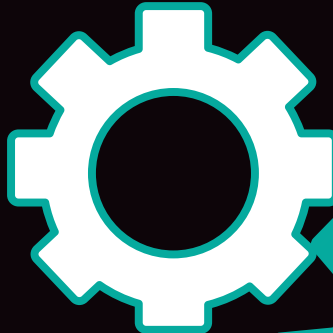
You will receive a tax deduction receipt when you drop off unwanted electronics.

Rosewood ecycle
2200 Main St.
Great Bend
South of the Dairy Queen!



CONTACT INFORMATION
(620) 603-8348
www.RosewoodServices.com

CREATE & INNOVATE



Save
the
Date

98TH ANNUAL

CHAMBER BANQUET

GREAT BEND
CHAMBER OF COMMERCE

FEBRUARY 22, 2020
GREAT BEND
EVENTS CENTER

WHAT YOU DON'T KNOW,
CAN HURT YOU
TEST YOUR HOME
FOR RADON

WE ARE THE AREA'S ONLY
CERTIFIED PROVIDER
FOR RADON TESTING
& MITIGATION



Radon is the 2nd
biggest cause of
lung cancer.

CALL US TODAY TO GET TESTED

800-937-3030

Comfort Pro Inc.

ProGreen Donates Mower, Trailer to Sunflower

Brian Mitchell, owner of Pro-Green, 1720 Main in Great Bend, wants to "go all in" for the 25th anniversary of his business next year. And one local non-profit agency will benefit from the celebration. Sunflower Diversified Services "couldn't be more grateful to be part of Brian's plans," said Connie Oetken director of development. "He has donated spectacular items for the live auction at next year's Charity Gala to benefit people with special needs."

Mitchell is donating a brand-new riding lawnmower and aluminum trailer to the Gala, which is set for Saturday, Feb. 29. The Hustler Raptor SD features a 54-inch welded-steel deck; the Aluma trailer is 78 inches wide and 10 feet long.

The Raptor retails for \$4,249, while the trailer is valued at \$2,410. "Hustler builds its great products in Hesston, Ks.," Mitchell said. "This Raptor lawnmower has many heavy-duty qualities at a homeowner's price. It features a great design and ease of operation with raw performance."

Oetken noted the mower and trailer are "practical items that are a perfect fit for our auction. When Gala time rolls around, it will be the season to start thinking about lawn care. Brian should be commended for his care and compassion for the people we serve at Sunflower."

The 15th annual Gala begins with a social hour at 5:30 p.m. on Feb. 29 at the Great Bend Events Center, 3111 10th. Participants can expect a catered meal from Ellsworth Steak House, open bar and wine at every table. A seat at the Gala is \$100. Contact Oetken by calling 620-792-1325 for more information, to donate and/or make a reservation.

Sunflower, a non-profit agency, serves infants, toddlers and adults in Barton, Pawnee, Rice, Rush and Stafford counties. It is in its 53rd year.



HIGHLIGHTED EVENTS IN JANUARY

- 2... pOVERty Class 4 Orientation, FUMC, 2123 Forest Ave. @5:30Ppm
- 9... **Chamber Coffee: Chamber Ambassadors, The Sunflower Center, 1125 Williams St. Program @9:30am**
- 16... **Chamber Coffee: Habitat for Humanity, The Sunflower Center, 1125 Williams St. Program @9:30am**
- 17... Opening Reception: Jee Hwang Exhibit, Shafer Art Gallery, 245 NE 30 Rd. @6:30pm
- 17... Central Kansas Partnership Meeting, Barton Co Health Dept. @11am
- 17... FiberSpace 2020, Heartland Farm, 1049 CR 390, Pawnee Rock @7pm
- 18... FiberSpace 2020, Heartland Farm, 1049 CR 390, Pawnee Rock @9am
- 21... Central Kansas Partnership Meeting, Barton County Courthouse, 1400 Main St. @11am
- 23... **Chamber Coffee: Central Kansas CASA, Holiday Inn Express, 3821 10th St., Program @9:30am**
- 25... Barton County's Got Flavor feat. The Colorado Keys, Great Bend Event Center, 3111 10th St. @6pm
- 30... **Ribbon Cutting: QS Nurses, 1701 Williams St. @9am**
- 30... **Chamber Coffee: maurices, 3511 10th St., Program @9:30am**
- 30... Small Business Resources, Great Bend Public Library, 1409 Williams St. @6pm

Recurring Events:

Great Bend City Council Meetings, 1st & 3rd Mondays, City Hall, 1209 Williams St, 6:30p.m.
Barton County Commission Meetings, Every Monday, Barton County Courthouse, 1400 Main St, Rm 106, 9a.m.

See more community events by visiting our website: www.greatbend.org

Notice of Holiday Hours & New Hours in 2020

Holiday Hours: The Great Bend Chamber of Commerce & Economic Development will be closed January 1st for New Year's Day.

New Hours of Business: Effective January 2, 2020, our regular business hours will change. Hours will be Monday – Friday, 9a.m. – 3p.m.

Small Business Resources Seminar Jan. 30 *A Joint Event Hosted by the SBA, SBDC, Chamber & Public Library*

The Great Bend Public Library and Great Bend Chamber of Commerce invite you to a special 1-hour seminar on "Small Business Resources" happening Thursday, January 30th from 6-7 p.m. at the Great Bend Public Library, 1409 Williams Street in Great Bend.

Learn how to benefit from the available business resources in our community. This workshop will offer information on important digital tools, research databases, business plan templates, and confidential no-cost business mentorship to get you on the track to success!

Presenter Karol Ikeda from the Small Business Administration will share information in how to start and grow your business.

If you can, please register on the Great Bend Public Library website, so that we can get an estimated attendance before the event. However, registration is not required to attend!

REGISTER ONLINE using the calendar of events at www.greatbend.org



U.S. Small Business Administration



YOU ARE INVITED Community Outlook Event Feb. 20

Monday, February 10, 2020

8:00 AM to 10:00 AM

Holiday Inn Express

3821 10th Street, Great Bend, KS 67530

The purpose of this event is to convene a group of business and community leaders to talk about relevant economic issues that will impact local businesses and communities. More specifically, Jeremy Hill, director of the Center for Economic Development and Business Research at Wichita State University, will talk about the current economic conditions, economic drivers for the state and regional economies, and general expectations over the coming months. Topics to be included are labor demand, costs, and wages. A local presenter will provide an in-depth analysis of the local economy.

REMINDER Chamber Banquet Feb. 22

Tickets will be on sale soon for the Chamber's 98th Annual Meeting & Banquet, scheduled for February 22nd at the Great Bend Events Center. Watch the mail for your official invitation, as well as your email inbox. Tickets can be purchased online, or in person at the Chamber office, 1125 Williams.



LOCAL AND LOYAL TO THE CENTRAL KANSAS REGION

As a 25-year veteran of the farm and ranch industry, Scott Dewerff didn't hesitate to sign on with KanEquip when it came to town last year. He was aware of KanEquip's reputation and wanted to be part of the team. Dewerff is store manager at the company's relatively new location at U.S. 56 & Airport Road. "I knew KanEquip would be a great company to work for," Dewerff said. "It was created by a family and continues to be supported by that family. There is a great support network that we can depend on; everybody is happy to help."

That network includes a total of 14 locations in Kansas and Nebraska. The company was founded in 1967 as Meinhardt Farm Equipment in Wamego. And to the surprise of many, the Great Bend store is among the top performing locations in the KanEquip family of stores. In parts alone, the Great Bend location carries more than \$4 million in inventory.

"KanEquip has demonstrated over the years that it is a leader and trusted partner in providing products, support and innovative solutions to agricultural producers," Dewerff commented. "It is an established, successful company. This is the best career decision I ever made."

Product lines include CASE IH, JCB, Kinze, Exmark, Great Plains, Land Pride, Kuhn, KMW, MacDon, Drago, Duo Lift, HayBuster and J&M.

"These are amazing products and we have the team to back them up," Dewerff said. "We have the best employees you could ask for. They care about our customers, and make sure they are up and running. Our employees are skilled, qualified and professional. We wouldn't have been as successful during these first seven months in Great Bend without them."

Everyone who started at KanEquip on opening day, May 6, 2019, is still on the job. "That speaks volumes," Dewerff noted.

In addition to its product lines, KanEquip has the precision-farming know-how to help farmers meet their demands through innovative technology. This technology is available in tractors, combines, sprayers and other equipment. "You have control at your fingertips to enhance efficiency and strategies," Dewerff said.



"You can tailor your resources to suit your needs and improve yields and accuracy."

For example, the new 2020 CASE IH AFS Connect Magnum is a game-changer. This whole new design was showcased recently when KanEquip hosted a two-day combine and tractor clinic. Such clinics are sponsored every year and feature a new piece of equipment.

KanEquip also prides itself on its professional service department. It can service any machine, no matter the brand. "We provide quality repairs with guaranteed workmanship," Dewerff said. "Our service department design includes large bays, overhead hoists and special tooling. This allows us to handle repair jobs quickly and efficiently to help minimize downtime in the field. We are here to ensure your equipment gets the job done, season after season."

KanEquip is always recruiting experienced technicians who are available 24/7 every day of the year. Not only do they offer competitive pay and benefits, but they also offer a unique opportunity for four years of paid training as well as a scholarship program at OSU. Currently, the local dealership employs 22 people.

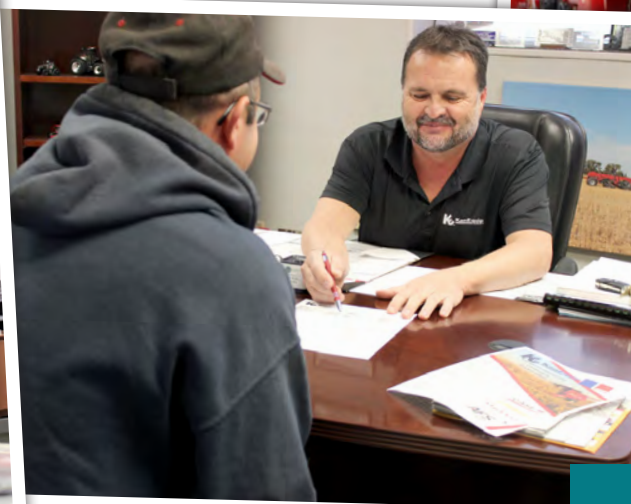
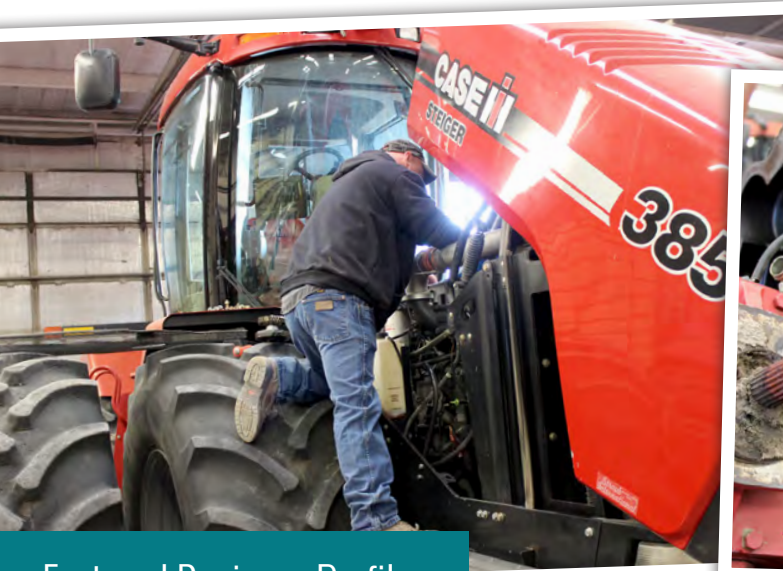
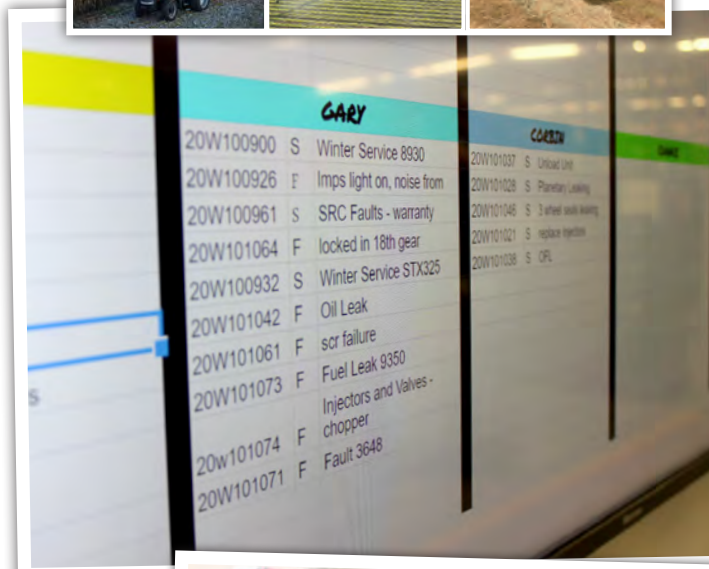
While KanEquip employees focus on their customers each day, they never forget about the rest of the community. They donate time, cash and products to agricultural groups, school events, youth programs and other community causes.

"We are especially proud of our work with Kids' Ag Day," commented Dewerff, who is co-chair of the ag day committee. "Talking with these kids and demonstrating the equipment is fun and educational. They are the future of farming and ranching. And it all starts with teaching youngsters to love and care for the land."

"Since we live here too, we are proud to take care of the community that takes care of us. This makes for a great team," added Dewerff, who serves on the Great Bend Chamber of Commerce Board of Directors and is the 2020 chair of the Kids Ag Day Committee.

Other community entities and events that have the support of KanEquip include fire departments, 4-H, Kids Tractor Safety Day and libraries. KanEquip is planning to attend the Great Bend Farm & Ranch Expo in April. They also sponsor numerous FFA groups throughout their service area.

Jim Meinhardt, KanEquip president, said the Great Bend site was attractive to him because of the "good location, good facility and good people. Our local business continues to increase and we hear many positive comments, not only from our customers but from the rest of the community too. They are thanking us for coming to town. We have an excellent team here."





**GIVE \$100
FOR A CHANCE TO
WIN \$3,000!**

**ONLY 100 TICKETS
WILL BE SOLD!**

**\$3,000 GRAND PRIZE WINNER
\$1,000 SECOND CHANCE WINNER**

REMAINING PROCEEDS TO BE SPLIT BETWEEN CHASING
TAILS RESCUE AND THE GOLDEN BELT HUMANE SOCIETY.



620-792-1265

Kids Ag Day Committee Recognizes David LeRoy for 25 Years of Dedicated Volunteer Service

Local farmer and agriculture industry expert David LeRoy was recently recognized by the Chamber's Kids Ag Day committee for more than 25 years of dedicated volunteer service.

The Kids Ag Day committee works almost year-round to plan, organize, and execute one of the largest agricultural education events in the region. More than 400 fourth grade students from all over Barton County attend Kids Ag Day each September to learn about the various aspects of the agricultural industry and how it affects our local economy. The event rotates between different area farms, and countless volunteer hours go into recruiting sponsorships and volunteers, lining up speakers and demonstrations, communicating with area schools, organizing meals, and executing the event - and all this has been perfected over more than 25 years by a group of dedicated volunteers, including David LeRoy. Thank you, David!



Phone: **620-792-5700**

1905 19th Street in Great Bend, Kansas

**Family Practice,
Behavioral Health &
Dental Services**

Preventative Care

Prescription Assistance

Diabetes Management

Evening Appointments

Open to Everyone

Bilingual Staff

All Insurance Accepted

Including Medicare, Medicaid & KanCare

"We Care About Your Health"

www.HeartofKansas.com

The Page Banquet Room Undergoes Renovations

Banquet room users at The Page and Perkins Restaurant & Bakery can now enjoy a brand new room for their next event! The entire room has undergone a complete remodel and renovation! The new updated venue can be utilized as one large room or split into smaller meeting spaces with amenities that include catering, technology and more!

Learn more by contacting Christy Turner, Banquet Coordinator. Christy can be reached at ourbanquetrooms@gmail.com.



Danceography Celebrates New Consolidated Location in Great Bend After Total Renovation

Danceography has moved! Owner Laura Klima-Fehr is excited to announce the purchase of new, larger dance studio located at 1701 K-96 HWY, Great Bend. Prior to the move, Danceography students were spread across multiple locations. Now, all are in one centralized location with brand-new dance studios for all classes! Dance parents are set-up with viewing rooms and TV's to watch their dancers and dancers waiting are provided a room to study, do homework or simply hangout between lessons.

Danceography has moved into a brand new space and is proud to announce that all of their Great Bend studios are now housed in one location! Danceography was founded in 2014 on faith, a love for dance, children, and teaching! With 27 years of experience, our studio offers various levels of tap, jazz, musical theatre, lyrical, ballet, contemporary, hip hop, technique and more. Our classes help dancers strengthen and perfect their skills through step-by-step, high quality instruction. In 2015, we added a competitive dance team to motivate our student's to a new level. In 2019, they grew one more location to De Soto, Kansas and are ecstatic the Lord is using their talents in new locations in Kansas. At Danceography, we take pride in our respectful, Christian environment, and our family-friendly atmosphere. Our energetic staff looks forward to having you as part of our growing dance family. Please get to know us, share in our dream come true, and become the dancer you've always wanted to be.

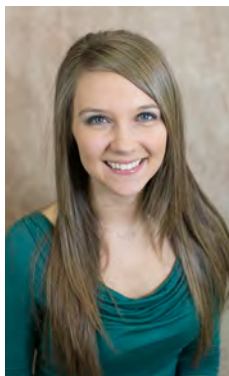
Following classes offered weekly: Babes of Ballet (ages walking - 4), Ballet I & II, Tap I, II, III, IV, Advanced Jazz I, II, III, IV, Advanced Lyrical/Contemporary I, II, III, Advanced Hip Hop I, II, III, Advanced Technique I, II, III, Advanced, Private Lessons upon approval only, Competition Teams - tryouts required, and Open Gym. Enrollment is now OPEN! Please call Laura today: 620.617.1933 or visit www.danceographygb.com.



Plains State Bank Promotes Galindo to Asst. VP

Plains State Bank is pleased to announce the elevation of Cory Galindo to Assistant Vice President. Cory is located at the Great Bend Branch at 800 Coolidge Street in Great Bend. Cory's primary focus is the Bank Secrecy Act, bank operations, and customer service. Cory's willingness to assist employees with any situation, her work ethic, and professionalism makes her deserving of this recognition.

"Cory is a hard-working, dedicated employee who provides excellent customer service, promotes the Bank's products and services and understands the elevated risk in today's banking environment", remarked Lindsay Scharztz, Senior Vice President. Cory has nine years of banking experience with expertise in deposit operations. Cory, her husband Gustavo, and children Heidi and Kye reside in Great Bend.



Tickets Now on Sale for Fundraiser Jan. 25

Barton County's Got Flavor is coming back in 2020, with special guests, Colorado Keys, returning for a fifth year! On Saturday, January 25, 2020, Habitat for Humanity for Barton County will play host to a great night of food prepared by our contestants, followed up with what promises to be a night full of unforgettable entertainment!

Held at the Great Bend Events Center, this fundraiser will feature food tastings from 6:30-7:15 p.m., followed by the high energy, dueling piano entertainers from the Colorado Keys at 7:30 p.m.

YOU be the judge...


Guests will have the opportunity to taste a variety of food prepared by local volunteer chefs. Event attendees are the judges and will vote for their favorite food tasting. The winning teams will receive a trophy or cold hard cash.

"We are so excited for this annual event and hope everyone comes ready for some great food, laughter, and entertainment," Austin Coyan, Habitat for Humanity Chair goes on to say, "We invited the Colorado Keys back this year along with their Dueling Pianos act. People asked for their return and we listened."

Tickets are \$25 each for the tastings and the dueling piano show. The dinner and cash bar is available for adults only, with tickets limited to the first 150 people. Tickets for the dueling piano show, only, are available for \$15 per person.


For more information or to reserve tickets, contact at habitatbartoncounty@hotmail.com or send a message through the Habitat for Humanity: Barton County Area Facebook page. Tickets are also available for purchase at the Great Bend Chamber of Commerce, 1125 Williams, Great Bend, KS.

Thank you to our other sponsors: Spectrum CPA Partners, Insurance Planning, Just In Time Remodeling, Keller Real Estate and American State Bank.



START YOUR 2020 WITH THE REC

- 10 WEEKLY GROUP FITNESS CLASSES**
- 02 GYMS AVAILABLE FOR BASKETBALL & WALKING**
- 10 STRENGTH STATIONS IN THE WELLNESS CENTER**

 www.greatbendrec.com
1214 Stone Street
620-793-3755

Update from Core Community, Formerly Circles

Youth Core Ministries has been in contract with Circles USA for 4 1/2 years. Circles provided inspiration and helped spark a movement in Kansas. However, Youth Core's local sites chose not to renew their contracts with Circles USA. At this point, we were only paying for a name and felt it fiscally wise to drop contract. We will always be grateful for the start that Circles USA gave us.



Youth Core is now calling their Poverty Resolution Ministry "Core Community", and are no longer allowed to use "Circles" to identify this program. Because of this, we have all had to change our name locally as well. After much consideration and collaboration with everyone from the Advisory Board to the leaders, we came up with "A Journey to Resolve pOVERty" / Barton County Core Community. We know that change is not always easy, but we feel that this change is a positive one, since all that truly is different is the name, and the local name we decided on describes the program, and honors what we are. We will continue serving families and our community, through this amazing program, as we have since 2017.

Here are some exciting updates regarding our program:

- **Graduated 3rd Class of Getting Ahead in a Just Getting by World**, on September 26, 2019, 5 of the graduates have continued with us into phase 2. They were matched with their Core Friends (formerly Ally) on December 6, 2019.
- **We are excited to have Mayor Elect Cody Schmidt join us Thursday, December 12th** to share his story and learn more about our mission. Building Relationships is so important. It takes ALL!
- **NEW CLASS ORIENTATIONS:** January 2nd and January 9th, 2020. What a great way to start a new year!! We will be kicking off the 4th Class, with these 2 nights! We already have a huge interest from people in our community, wanting to start this journey out of poverty.
- **We are always in need of Financial Support, Meals, and Core Friends.** If you are interested in more information, or would like to support us, please contact Jamie Baldwin 620-282-9332 / jamiiebaldwin@essdack.org or Steven Polley 620-792-7995 / stevenpolley@essdack.org – You can also find us on Facebook @ BartonCountyRESOLVEpOVERty

Thank you for continuing to support this life-changing movement; solving poverty in Barton County.

United Way Collecting Supplies for Boxes of Love

Boxes of Love will once again be delivered to homebound seniors in Barton & Pawnee Counties. This is the fourth year for this project, and is a collaboration of United Way of Central Kansas, ElderCare Home Services, Meals on Wheels, and RSVP/Volunteers in Action. Partnering together, these non-profits work to brighten the day and warm the hearts of hundreds of seniors throughout Central Kansas. Each box is filled with items for these seniors, some of them just for fun as well as some practical items. Items range from stationary and cough drops to shampoo and conditioner. Due to the size of the box and transportation of the packages, we do request that items be travel sized. Each box also gets topped off with homemade Valentine's Day cards made by children at UWCK Community Partner's Great Bend Children's Learning Center and Caring Hands Daycare as well as other children throughout Barton and Pawnee Counties. The project is already off and running with donations from Thrivent Financial and Midwest Energy. Thanks to these generous donations we can ensure that each box will have chocolates, stamps, and a special gift from UWCK.



If you would like to make a donation to Box of Love to show love to a homebound senior this Valentine's Day, you can drop off your donations at: Clara Barton Hospital, University of Kansas Health System-Pawnee Valley Campus, First Kansas Bank (Hoisington & Great Bend), Sunflower Bank (Ellinwood & Great Bend), Farmers Bank & Trust (Great Bend & Larned), and the Great Bend Chamber of Commerce. If you don't have a chance to run to the store to make a donation, cash donations are accepted and will be used to purchase items for each box. Please make checks payable to United Way of Central Kansas, 1125 Williams, Great Bend, KS 67530.

3 Reasons to Hire The HR Pro



You have employees but can't afford your own Human Resources department.



Your company needs assistance tackling a special Human Resources project.



Your H.R. department needs a boost from a seasoned industry expert.

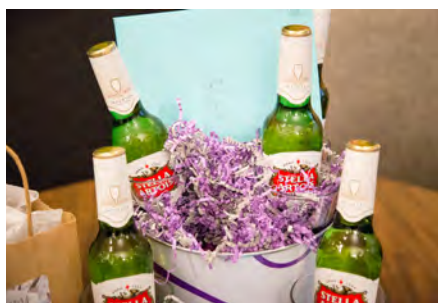


Erika Brining
SPHR & SHRM-SCP
620-793-0985



Farewell Reception for Jan Peters a Huge Success

After more than fourteen years of dedicated service as the President/CEO of the Great Bend Chamber of Commerce & Economic Development, Jan Peters will start a new position working for Kansas Manufacturing Solutions in early January. During a reception held in her honor in late December, Chamber members and colleagues of Jan's were invited to enjoy refreshments and wish Jan well in her new professional venture. THANK YOU to everyone who attended to say farewell to our beloved Jan. She will be missed, but definitely not forgotten as she takes on this more regional role leveraging all of her professional connections and experience!



Heartland Farm FiberSpace Jan. 17-18 or Feb. 7-8

Heartland Farm will be hosting two sessions of FiberSpace 2020 in early 2020. Attend the January 17-18 session, the February 7-8 session, or both! FiberSpace is an annual workshop designed to help beginning to advanced fiber artists learn, renew, or further develop their skills in crocheting, knitting, weaving, or spinning. Participants choose one skill on which to work throughout each, two-day session. FiberSpace is led by the Sisters at Heartland Farm, who have a wealth of knowledge and experience in fiber arts. The Farm has a variety of looms, spinning wheels, drop spindles, crochet hooks, and knitting needles for you to use, or you can bring your own. You will also have the opportunity to work with fiber from our herd of alpacas. You can even stay the night with us! NEW THIS YEAR – Bring someone who needs a retreat but may not be able to afford it. Ask us about our small number of scholarships.

GREAT BEND
CHAMBER OF COMMERCE

WELCOME
to Our **NEWEST**
Chamber Member

**XPRESS WELLNESS
URGENT CARE**

Jean Powers, Area Manager
j.powers@xpwell.com

Ryan Jacobs, Marketing Coordinator
r.jacobs@xpwell.com

3800 10th St.
Great Bend, KS
(620) 603-4216

<https://xpresswellnessurgentcare.com>

Healthcare

**WANT TO JOIN THE
CHAMBER?**

If your company is interested in joining the Great Bend Chamber of Commerce & Economic Development, fill out the online application on our website: www.greatbend.org. Membership is quick and easy to get started, and it is affordable, too!

You can also sign up to attend one of our Chamber Member Orientation & Marketing Services Seminars. These seminars happen throughout the year, with the next one coming up on Wednesday, October 9th from 10-11 a.m. members are encouraged to send at least one team member to get acclimated and stay up-to-date on the free or low-cost marketing opportunities available through the Chamber.

Sign up on our website:

[www.greatbend.org/
eventregistration](http://www.greatbend.org/eventregistration)



CELEBRATING OVER 53 YEARS
OF SERVING PEOPLE WITH
DEVELOPMENTAL DISABILITIES!

There is a Difference.

EARLY EDUCATION
CASE MANAGEMENT
DISABILITY SUPPORTS
RESIDENTIAL ASSISTANCE
COMMUNITY EMPLOYMENT
RECYCLING & MANUFACTURING
GENERAL PUBLIC TRANSPORTATION
& MUCH MORE!

620-792-1325

WWW.SUNFLOWERDIV.COM

Hutchinson Clinic Physicians Serving the Great Bend, Hoisington & Ellinwood Areas

GREAT BEND:

Hutchinson Clinic Great Bend / 3715 6th Street
Dr. Jamil Ahmed, Cardiologist
Dr. Aaron Thiessen, Ear Nose & Throat
Dr. Curt Thompson, Interventional Radiologist
Natalie Williams, PA, Pulmonology

ELLINWOOD:

Ellinwood Medical Clinic / 611 N. Main
Dr. Jamil Ahmed, Cardiologist

HOISINGTON:

Clara Barton Medical Clinic / 250 W 9th St
Dr. Costy Mattar, Cardiologist
Dr. Christine Sanders, OBGYN
Dr. Curt Thompson, Interventional Radiologist

Exceptional Care Close to Home



Call for an appointment: 620-669-2500
www.hutchclinic.com

CHAMBER COFFEE SCHEDULE

Every Thursday | Doors Open at 9am | Program at 9:30am

January 2, 2020

NO CHAMBER COFFEE

Happy New Year from the Great Bend Chamber!

The Great Bend Chamber of Commerce & Economic Development will be closed from December 24th through January 1st to allow our employees time to celebrate the holidays with loved ones. We will re-open January 2nd.

January 9, 2020

GREAT BEND CHAMBER AMBASSADOR CLUB

Spray-Holt Family Board Room | 1125 Williams in Great Bend

The Chamber Ambassador Club is taking center stage at this week's Chamber Coffee! Join us as we introduce our members and recognize retiring and incoming Ambassadors for 2020. The Ambassadors work hard throughout the year representing not only the Great Bend Chamber of Commerce & Economic Development, but also their businesses and community. Help us give thanks to this AMAZING group of volunteers.

January 16, 2020

HABITAT FOR HUMANITY: BARTON COUNTY AREA

Spray-Holt Family Board Room | 1125 Williams in Great Bend

Habitat for Humanity has been in Barton County since 2001. Our non-profit organization gives a hand up, not a hand out. Every donation received is used to build or remodel homes for our partner families, who then purchase the home through a zero-interest, 25-year mortgage.

January 23, 2020

CENTRAL KANSAS CASA

Holiday Inn Express & Suites | 3821 10th Street in Great Bend

The mission of Central Kansas CASA, Inc. is to serve as an advocate for abused and neglected children by providing a pool of trained caring volunteers who speak for the best interest of a child until a safe, loving, and permanent home is found.

January 30, 2020

MAURICES

3511 10th Street in Great Bend

We inspire women of all ages to look and feel their best – just as they are. With 1,000 stores across North America, we've earned our reputation as a leader in hometown fashion. The true secret to our success is deeply rooted in our commitment to our values.

February 6, 2020

CENTRAL KANSAS CHRISTIAN ACADEMY

215 McKinley Street in Great Bend

Central Kansas Christian Academy is a non-denominational community Christian school, which provides an exceptional educational opportunity for children in Kindergarten through the Eighth grade. Our strong curriculum not only promotes learning, but also growth in the student's Christian spirit. CKCA combines Christian character training with an excellent academic program that we believe will build a strong foundation for your child's future.



3307 10th Street • Great Bend, KS 67530

McDonald's

is providing coffee for Chamber of Commerce coffees.