



Great Bend
CHAMBER of COMMERCE
and ECONOMIC DEVELOPMENT

Outlook Business Journal

www.greatbend.org

*A Monthly Publication of the Great Bend Chamber
of Commerce and Economic Development*

December 2015 • Volume 95 No. 12

FULL STEAM AHEAD Annual Chamber meeting and banquet Feb. 20

Seeking to support and propel the Great Bend business community, the Great Bend Chamber of Commerce & Economic Development will host its annual banquet to celebrate accomplishments of the past year. You are invited to attend the 94th Annual Chamber Meeting & Banquet on Saturday, February 20th at the Great Bend Events Center.

This year's theme, "Full Steam Ahead" reflects the forward momentum of our community through the celebration of projects that will bring innovation and industry to Great Bend in the year ahead.

Beginning with a cocktail hour at 6 p.m., followed by dinner at 7 p.m. catered by Classic Inn, the evening concludes with accolades for Chamber volunteers as well the distinguished Business of the Year, Citizen of the Year and NextGen Leader of the Year awards. In 2016 we are also honored to include a special Legacy Award, celebrating the life and impact of Skip Yowell on our community. A dance will follow from 9-11 p.m.

Corporate Table Sponsorships which include company recognition will again be available this year as well as single ticket reservations. A formal invitation will be mailed later this month with additional details – stay tuned!

Reservations can be made by visit www.greatbend.org/ChamberEvents.aspx. The deadline for reservations is Monday, February 8th at 5 p.m. For more information, contact Chamber Office Manager Roxanne Rich, 620-792-2401 or r-rich@greatbend.org.

JOIN US FOR THE
94th Annual
MEETING & BANQUET
for the
GREAT BEND CHAMBER OF COMMERCE & ECONOMIC DEVELOPMENT

FULL STEAM AHEAD
SATURDAY
FEB. 20
2016

6:00 P.M. SOCIAL & COCKTAIL HOUR
7:00 P.M. DINNER & PROGRAM

GREAT BEND
EVENTS CENTER

Cocktail Attire



"Outlook Business Journal"
A monthly publication of the



1125 Williams,
Great Bend, KS 67530
Phone: 620-792-2401
Fax: 620-792-2404

Web address: www.greatbend.org

EXECUTIVE COMMITTEE

- Chairman
Kenny Vink, Office Products Inc.
- Vice Chairman
Dennis Neeland, Great Bend Co-op Association
- 2nd Vice Chairman
Paul Snapp, First Kansas Bank
- Immediate Past Chairman
Curt Mauler, L&M Contractors
- Treasurer
Alan Burton, MPIRE Properties

BOARD OF DIRECTORS

- Linda Bonewell**
Fuller Industries, LLC
- Taylor Calcara**
Watkins Calcara, Chtd.
- Frank Callahan**
American Family Insurance
- Matt Dykes**
Epoxy Poly, Inc.
- Matt Fehr, DVM**
Animal Medical Center
- Brent Hanson**
Great Bend Regional Hospital
- Kevin Keller**
Keller Real Estate & Insurance Agency
- Kevin Mauler**
4M Farms
- Candice Moeder**
QS Nurses / BCYP
- Rodrigo Razo**
Playa Azul Mexican Restaurant
- Leilani Schenkel, RN**
Almost Home, Inc.
- Chris Smith**
Smith Supply, LLC
- Aaron Spanier**
Innovative Livestock Services
- Marty Steinert**
Dove Buick Chevrolet Cadillac / Ambassador Club
- Jan Westfall**
Hi Neighbor Publications

EX-OFFICIO

- Cris Collier**, Great Bend CVB
- To Be Filled**, Barton Community College
- Vicki Berryman**, Great Bend City Council
- Brad Reed**, USD #428
- Jennifer Schartz**, Barton County Commission

CHAMBER STAFF

- Jan Peters, President/CEO**
jpeters@greatbend.org
- Andrea Bauer, Director of Sales & Member Services**
abauer@greatbend.org
- Roxanne Rich, Office/Business Manager**
rrich@greatbend.org



Zena Jacobs, St. Rose Health Center site manager, cuts the ribbon at the facility's grand opening.

Community shows support for St. Rose Health Center

The community gave St. Rose Health Center a hearty welcome Wednesday evening at the facility's grand opening and Chamber of Commerce ribbon cutting, said Mark Mingenback, director of public relations and marketing.

"We were overwhelmed with gratitude at this great turnout," Mingenback said. "All of us hear words of support for St. Rose every day. But it was great to see this heartwarming level of interest in our new state-of-the-art facility."

St. Rose Site Manager Zena Jacobs greeted the crowd with opening remarks that were followed by comments from Scott Taylor, chief executive officer of Centura Kansas, and Dr. John Jeter, chief executive officer of Hays Medical Center. HaysMed and Centura co-own St. Rose.

In addition, Tom Bell, president of the Kansas Hospital Association, spent time congratulating St. Rose's owners, employees and the community.

"It would be an understatement to say that our speakers were impressed with the quality and quantity of services we provide," Mingenback said. "While Mr. Taylor and Dr. Jeter have supported us through every phase of this journey, they emphasized that the results of our collaboration have

exceeded expectations.

"Mr. Bell's comments about St. Rose being at the forefront of this new era in health care also were gratifying," Mingenback added.

"Our comprehensive services, new outpatient surgery suite, and focus on wellness and preventive medicine define this new world of health-care reform."

Mingenback also noted that St. Rose administrators, health-care providers and other staff members appreciate those who took the time for the guided tours of each department.

"The tours were a real eye-opener for the dozens and dozens of people who got an up-close look at our new facility," Mingenback said. "It is safe to say they left here impressed."

St. Rose specializes in primary care, prevention and wellness. Services include St. Rose Family Medicine, Convenient Care Walk-in Clinic, Great Bend Internists, imaging, infusion clinic, WellnessWorks, one-day surgical procedures, Golden Belt Home Health & Hospice and a comprehensive Specialty Clinic. St. Rose is co-owned by Hays Medical Center and Centura Health. Center and Centura Health.

NEXTECH here for you
Your Broadband & Technology Company
Lindsey
Customer Sales, Great Bend

Conrade
Insurance Group
We Make it Our Business to Serve Your Business!
Contact us for a quote!
316-283-0093
www.conradeinsurance.com

Almost Home receives donation to honor brother

Rhonda Hughes, Great Bend, believes her brother, Stanton Bergen, is probably tickled with the idea that his 2012 Kia Soul is being put to good use.

Hughes donated the car in her brother's memory to Almost Home Inc., a residential-care facility at 1919 Van Buren. Bergen was only 47 when he recently died of pancreatic cancer.

"No sooner had we found out that he had cancer, he was gone," Hughes recalled. "The day he died, he was scheduled to go to Almost Home for hospice services.

"But he never made it there," Hughes added. "The hospital in Hutchinson called and said he couldn't be transferred that day. Stanton had had a rough night."

When Hughes received this news, she immediately contacted Leilani Schenkel, R.N., Almost Home executive director/operator.

"The next thing I know, Leilani is on her way to Hutchinson," Hughes said. "She said she felt a sense of urgency that day. She talked to Stanton and helped him be sure he was right with God. That is priceless."

Schenkel acknowledged she felt drawn to make the trip to Hutchinson.

"I just got in my car and left, which is out of character for me. But from the minute I heard Stanton couldn't be transferred, I felt like I needed to act now. I did ask Rhonda if she wanted to ride along but she had already made other arrangements. I was praying on the trip and didn't stop for anything."

She is glad she didn't.

"I walked into Stanton's room and it was evident he was having a difficult time," Schenkel said. "His breathing was fast and labored. I just talked to him about heaven and it wasn't long before his breathing slowed. I was with him for less than an hour before he died."

Schenkel and Bergen had been friends for 30 years; they had worked together at Dillons back in the day.

He had told his family if he needed hospice services, they should call on his old friend.

"We are so grateful to Leilani and Almost Home," Hughes said. "I know Stanton would feel I did the right thing by donating the car. He is probably getting a kick out of it."

Schenkel said the Kia is a perfect fit for running errands and calling on prospective Almost Home residents for assessments.

"Stanton will forever be dear to my heart," Schenkel said. "We are so grateful that Rhonda chose to pay it forward. Donations allow us to continue to grow and serve more people."

Almost Home, which opened in 2014, is a non-profit venture based on the "home-plus" model, a concept introduced in Kansas in 1997. It provides health care and personal care in a home-like environment.



Rhonda Hughes, left, and Leilani Schenkel are shown with the 2012 Kia Soul that Hughes donated to Almost Home Inc., 1919 Van Buren. Schenkel is executive director at the residential-care home.

In addition to full-time residential and hospice care, services include adult day care and respite care for families. Almost Home is staffed 24 hours a day with certified personnel and Schenkel is there often. Another registered nurse is always on call too.

Schenkel's background includes 17 years as an emergency room nurse at Central Kansas Medical Center, which is now St. Rose Health Center. She also was a flight nurse and marketing director for EagleMed and director of nursing at Clara Barton Hospital. At CKMC, she was chief nursing officer and chief operating officer.

Adventist school citrus fruit sales

The Great Bend Seventh-day Adventist School is selling citrus fruit as their annual fundraiser. The navel oranges, pink grapefruit, tangerines and variety packs will be available the second week in December (around Dec. 13-14).

This fruit will provide excellent and healthy Christmas gifts. This fruit is handpicked, packed, and shipped within a week with no artificial color or ripening. Pickup in Great Bend is encouraged as area delivery will be limited this year.

To order or for additional information contact Doris Reile-Kneller at 620-791-7314 or 620-282-1006.

**Leaky faucets? Clogged pipes?
Stool overflowing? Furnace busted?**

Turn to the Experts at Isern!

Heat & Air • Plumbing • Electrical

ISERN  turn to the experts

Carl Isern & Dan Mawhirter
620-564-3377 iserninc@hbcomm.net

**OUR business is to
help YOUR business
GROW!**

See us for:

Commercial Loans Inventory Financing
Working Capital Equipment Purchases
SBA Loans Ag & Energy Loans

**Farmers Bank
and Trust**

1017 Harrison
Great Bend, KS
620-792-2411
www.farmersbanks.com

 **DOONAN
GMC**

Visit the **Doonan Truck Museum**
(Tours available by appointment)
Jct. 56 & 156 620-792-2491

Doonan GMC Pre-Owned Lot
10th & Washington in Great Bend

www.doonantruck.com

Great Bend Regional Hospital welcomes Mawhirter as marketing director and physician recruiter

Great Bend Regional Hospital is proud to announce the hiring of Rachel Mawhirter as the healthcare provider's new marketing director and physician recruiter.

In this newly developed position, she will be responsible for managing the internal and external communications, advertising, community relations and physician recruitment for the hospital and its affiliated health clinic and family practice.



"Our owners and board of directors have continually made investments to improve the services and operations at our hospital," says Brent Hanson, CEO of Great Bend Regional Hospital. "Launching a new marketing and physician recruiting department is another step toward ensuring this facility's ability to provide the best quality healthcare long into the future."

Mawhirter was born and raised in Great Bend, graduating from Great Bend High School before attending Barton Community College and Fort Hays State University. She holds a Bachelor of Science in organizational leadership and certificates in leadership and human resource management.

Mawhirter spent the past eight years as the marketing director for the Great Bend Chamber of Commerce & Economic Development. She and her husband, Justin, reside in Great Bend with their sons, Jace and Emmett.

She is active as a board member for the Prairie Godmother Funds at the Golden Belt Community Foundation and volunteers regularly in the children's ministry at First Assembly of God. She sits on the Steering Committee for the Barton County Young Professionals group, and also serves as the group's public relations team leader.

Dr. Marshall to be recognized at reception

After nearly 30 years of practicing obstetrics and gynecology in the Great Bend area, Dr. Roger Marshall is shifting his focus to specialize on gynecology as of Jan. 1, 2016. A milestone reception will be Saturday, Dec. 5, from 11 a.m. to noon at 514 Cleveland Street in Great Bend. Activities will include a free holiday photo booth, coloring contest, refreshments and more. Every child who attends will receive a gift, and a group photo with all the children will be taken at 11:15 a.m. All mothers and expecting parents are invited. No RSVP is required.

Young professionals spotlight

A monthly update on activities & events for members of the Barton County Young Professionals group.

During the month of November, the Barton County Young Professionals gathered for a Friday night networking mixer sponsored by the Hutchinson Clinic at their Great Bend satellite office, 514 Cleveland (behind Great Bend Regional Hospital). The sponsor is provided free food and refreshments, along with a photo booth, music, and awesome door prizes. As always, the mixer was free to attend and guests were welcomed and encouraged to attend to sign up as a BCYP member. Employers are encouraged to send their staff to these events.

Come Dec. 1, the first ever "Party with a Purpose" will take place at sponsoring business Satellite Pros, located at 10th & Madison. Admission to the Christmas party is a pair of pajamas that will be added to a "Night Before Christmas" package for children served by Central Kansas CASA. Satellite Pros will provide holiday refreshments and door prize drawings. RSVP's are requested so that participants can find out what size of pajamas are needed. Join the Facebook event for details.

Keep up with news and events for Barton County Young Professionals by signing up for the YP email newsletter and like the Facebook Page, www.facebook.com/bartonyyp.

Want to Join?

Anyone who works in Barton County between the ages of 21 and 40 is welcome to join the growing group at any time. For more details or to join, email bartonyyp@gmail.com. And be sure to like the Facebook page!



Tune in to Chamber Connect Dec. 3rd

Tune in to KVGB 1590 AM on the first Thursday of every month to hear Eagle Radio's Patrick Burnett discuss the latest Chamber happenings with Director of Member Services Andrea Bauer.



www.GreatBendRec.net

...EXPLORE...CREATE...PLAY!

the Rec

Chlumsky Liquormart

2204 Kansas
Great Bend
620-792-1929

Let Ours Be Your Favorite Store

To a pet, food is love. Show them your care.

25% OFF
Science Diet Foods & Treats for Cats & Dogs

Animal Medical Center
622 McKinley Ave
620-792-1265

Expires Nov. 30, 2015

DECEMBER CALENDAR OF EVENTS

View & post all your community events at www.greatbend.org!

- 1... BCYP Christmas "Party with a Purpose," Satellite Pros, 10th & Madison, 6-8 p.m.
- 1... Golden Belt Community Foundation Giving Tuesday
- 1-31... Nex-Tech Annual Toy Drive Kick Off, 3700 10th, Continues through Dec.
- 3... Chamber Coffee: First Presbyterian Church, 2400 Washington, 9:30 a.m.
- 3...Ribbon Cutting: Danceography 2nd Location, 1709 Main St., 10 a.m.
- 5... Milestone Reception for Dr. Marshall, 514 Cleveland, 11a.m.
- 5... Barton Hilltop Singers "Jingle Bell Swing", American Legion, 1011 Kansas, 8 p.m.
- 5... KWEC Holiday Open House, 592 NE 156 Hwy, 10 a.m. to Noon
- 6... Holiday Home Tour, 1607 Main, 1-5 p.m.
- 7... Great Bend City Council Meeting, 1209 Williams, 7:30 p.m.
- 8... BCYP Personal Development Luncheon "Tax Planning Tips," 4101 10th Street, 12-1 p.m.
- 10...Chamber Coffee: Habitat for Humanity, Chamber Board Room, 1125 Williams, 9:30 a.m.
- 10...Ribbon Cutting: Heartland Taxes & More, 1125 Williams, 10 a.m.
- 11... Small Biz Holiday Spectacular, Stoneridge County Club, 1438 24th, 6:30-11:30 p.m.
- 15... Submission Deadline for December Issue of *Outlook Business Journal*
- 17... Chamber Coffee: Community Bank of the Midwest, 2220 Broadway, 9:30 a.m.
- 19... St. Rose Blood Screenings, 3515 Broadway, 6:30-10 a.m.
- 21... Great Bend City Council Meeting, 1209 Williams, 7:30 p.m.
- 21... Flyer Insert Deadline for December Issue of *Outlook Business Journal*
- 24... No Chamber Coffee: Merry Christmas!
- 24... Chamber Office Closed for Christmas Eve
- 25... Chamber Office Closed for Christmas
- 31... No Chamber Coffee: Happy New Year!
- 31... Chamber Office Closed for New Year's Eve
- Jan. 1...Chamber Office Closed for New Year's Day

RECURRING EVENTS

- Barton County Commission Meetings, Mondays, Courthouse Room 106, 9 a.m.
- GBPL Maker Space Mondays, 1409 Williams, 4 p.m.
- GBHHH Grief Support Group Meetings, 3520 Lakin, 6:30 p.m.
- GBPL Baby and Me Activity, Tuesdays, 1409 Williams, 10 a.m.
- American Legion Bingo, Tuesdays & Thursdays, 1011 Kansas Ave, 7 p.m.
- GBPL Story Time, 1409 Williams, Tuesdays at 11 a.m., Friday at 10 a.m.
- GBPL Quiet Study Session for Teens, Wednesdays, 1409 Williams, 3-9 p.m.
- Argonne Bingo, 1123 Main Street, Wednesdays at 7:15 p.m., Sundays at 1:45 p.m.
- Free Story Time at Everything Under the Sun, Thursdays, 407 McKinley, 10 a.m.
- GBPL "Magic" Gathering, Thursdays, 1409 Williams, 5 p.m.
- GBPL Free Friday Movies, Fridays, 1409 Williams, 4 p.m.
- Unwind with a Glass of Wine at Great Bend Coffee, Fridays, 2015 Lakin, 5-7 p.m.
- Dinner Served at American Legion, Fridays, 1011 Kansas Avenue, 6 p.m.

KWEC to hold Holiday Open House

Join the staff of the Kansas Wetlands Education Center in celebrating the Christmas season with a Holiday Open House from 10 a.m. to noon on Saturday, Dec. 5. Kids can decorate a gingerbread birdhouse, and families will enjoy other festive crafts and activities. Adults can take advantage of gift store promotions, including a chance at winning a \$50 gift certificate by finding KWEC's Christmas goose hiding in the exhibit hall. Christmas cookies, breads and warm beverages will be served to jumpstart your Christmas cheer. All events are free and open to the public. Preregistration by Dec. 1 is required for the gingerbread birdhouse activity, with a limited number of birdhouses available. Registration is not required for any of the other events. To register and for more information call 877-243-9268 or visit wetlandscenter.fhsu.edu.



BRYANT Funeral Home
CENTRAL KANSAS MONUMENTS, INC.
 1425 Patton Road
 Great Bend, KS 67530
 (620) 793-3525
www.bryantfh.net

"Protecting your health and your property."

- Commercial & Residential Services
- Pest & Termite Control
- Monthly, Bi-Monthly or Quarterly Visits
- Real Estate Inspections

Since

SCHENDEL

800-591-7378
SchendelPest.com

1947

Pest Services



Heart of Kansas Family Health Care, Inc.

Phone: 620-792-5700
 1905 19th, Great Bend

Family Practice & Mental Health Services

- Preventative Care • Prescription Assistance • Diabetes Management Evening Appointments • Open to Everyone • Bilingual Staff
- All Insurance Accepted - Including Medicare, Medicaid & KanCare

"We Care about your Health"
www.HeartofKansas.com

COMFORT PRO Inc.

**Heating • Air Conditioning
 Plumbing • Certified Radon Testing**



bryant Furnaces Perform 90% + Efficiency

Great Bend: 620-793-4208
 Larned: 620-285-3966
 Toll Free: 800-937-3030

Trail of Lights – A Great Bend tradition!

For over 20 years, Great Bend has been shining brightly with its renowned Trail of Lights Holiday display.



The animated lights wind through the community starting at Brit Spaugh Park then to Veteran’s Memorial Park for the Twelve Days of Christmas.

See the Christmas Nativity at K-96 & 10th Street, head south to the Historical Village

Lights display and back to Jack Kilby Square to see downtown, the beautiful Mayor’s Tree and the north side display on the square set to music!

Downtown retailers and businesses also boast festive holiday displays in their windows in addition to a plethora of gifts and goodies inside for your shopping needs this season!

The Great Bend Chamber of Commerce & Economic Development is a proud Neighborhood Champion for the “Shop Small” campaign and we encourage our community to support locally owned and small businesses this holiday season!



Nex-Tech Wireless kicks off annual toy drive

Thanks to the generosity of those within the community, the holidays will be a little brighter for deserving children in our area this year.

The Nex-Tech Wireless annual toy drive has kicked off and will continue until the end of December. Toys are being collected at all Nex-Tech Wireless and Nex-Tech Wireless Authorized Agent locations throughout central and western Kansas.

The Great Bend Nex-Tech location, an authorized agent for Nex-Tech Wireless, will be collecting toys for the local Toys for Tots. In the 2014 toy drive, over 500 toys were collected throughout the Nex-Tech Wireless market.

Anyone is encouraged to donate a toy for the drive, regardless of your wireless provider.

Making the holidays even brighter this year, anyone who donates a toy will be entered into a drawing for a \$250 Visa Gift Card. Additionally, the winner can choose their favorite local charity to receive \$250.

The winner will be announced on Jan. 8, 2016 and will then choose the local charity to receive \$250 from Nex-Tech Wireless.

“The annual toy drive is a great way for Nex-Tech Wireless to support local organizations and children this holiday season” stated Jon Lightle, President and CEO for Nex-Tech Wireless. “We are grateful for everyone that donates a toy this holiday season, and helping make the drive a success. It’s an important time of year in our communities for everyone to be reminded of the opportunity to give back, and not just receive.”

To donate a new toy to help a child in the community, or for more information on Nex-Tech Wireless, stop by Nex-Tech located at 3700 10th Street in Great Bend. For a complete list of locations visit www.nex-techwireless.com or call 877-621-2600.

About Nex-Tech Wireless

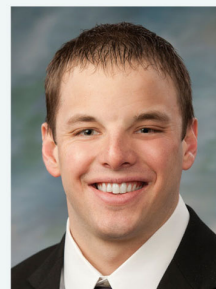
Nex-Tech Wireless, owned by Nex-Tech Inc./Rural Telephone, Golden Belt Telephone, Tri-County Telephone and Mutual Telephone, is a premiere wireless provider offering high-tech wireless solutions to residents in 40 counties of central and western Kansas as well as local coverage to 4 counties in Colorado. Nex-Tech Wireless focuses on providing its customers cutting edge technology including data and mobile services, as well as the latest wireless equipment and

competitive wireless plans that provide nationwide coverage. For more information, visit www.nex-tech-wireless.com



Schoendaler promoted at First Kansas Bank

Eric Schoendaler has been promoted to assistant vice president at First Kansas Bank according to Paul Snapp, President and CEO of the Bank.



In announcing the promotion, Snapp commented, “Eric is very deserving of this promotion. His farm background, common sense and strong work ethic have allowed him to take excellent care of customers. In addition, Eric is a very active volunteer serving Hoisington. I am pleased and excited to announce this well-deserved promotion.”

Eric holds a Bachelor of Business Administration Degree from Fort Hays State University. While growing up, he worked in the family farming operation near Grinnell. Eric and his wife Tiffany live in Hoisington.

First Kansas Bank has offices in Hoisington, Claflin, Great Bend and Hays.

Barton nursing student uses Senate Bill 155 classes to get a head start

Barton Nursing student, 19-year-old Breanna Towers of St. John, started making strides toward her career during her sophomore year of high school by taking college classes online and her forward thinking made it possible to complete all her pre-requisites before she even set foot in a Barton Nursing classroom.

Towers grew up in a family of nurses. Her mother and father were both nurses and she was able to spend some time with them in the professional world as a youngster. This motivated her to acquire her Certified Nursing Assistant credential at age 16 and she was able to do so at no cost due to Senate Bill 155 (SB155). In between getting her CNA and eventually her Certified Medical Assistant (CMA) credential, which she acquired at 18, she was told by her counselor that there was a whole list of classes she could take from Barton through its online component BARTonline via SB155. Dozens of Barton's career and technical classes, both online and on-site, qualify under the bill's framework, which means students can take advantage of classes at no cost to them, except textbooks and program fees as applicable. She took almost all of them, including all of her nursing pre-requisites.

"After getting my CNA I was able to work at the facilities in my hometown, and I knew I wanted to go farther with nursing," she said.

What really drew her to nursing was the inherent goodness she could provide with her knowledge.

"I just like knowing that I'm caring for people in need," she said. "It just hits home. I imagine them as my grandparents and what would I want for them. I enjoy being social with my patients and especially the elderly and seeing their smiles or having patients that joke around with you ... it just makes your day better and their day better. There are bad days that's not what you take home. It's the stuff that makes you feel good to be there."

At one point Towers was going to high school, working as a CNA and then CMA and taking college courses online at the same time. She had many sources of motivation.

Towers said all the SB155 classes not only saved her money in tuition, but also helped her earn \$11,000 in scholarships.

"People that are awarding scholarships see that you're doing all of these college classes and I think it really helped me earn scholarships," she said. "They want to give the money to someone who has a good chance at passing and they know

you can handle a lot if you have taken college credits."

Towers is now in the Licensed Practical Nurse portion of the Barton program and said her hard work has paid off. She will take the Registered Nurse classes next year.

Director of Nursing and Healthcare Education Dr. Kathy Kottas is proud of where Towers is and where she will go.

"Breanna has worked very hard to get to this point and we are so happy that all of her experiences are paying off for her," Kottas said. "We are so excited that she had the foresight to plan her educational track accordingly and has really stuck to her plan. We are even more excited that she chose to attend Barton. She is a great student and will be a great nurse very soon."

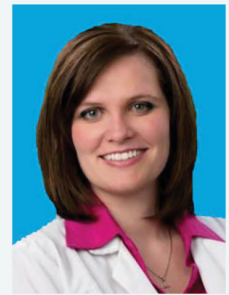
Chrest promoted to district sales coordinator

Aflac is excited to announce the promotion of AJ Chrest to district sales coordinator.

Chrest joined the company two years ago as an associate servicing accounts in and around Great Bend. She is a Fort Hays State University graduate with a bachelor's in business management, a lifelong resident of Great Bend, and active member of Community Christian Church. She has been a Chamber Ambassador since 2011 and will serve as 2016 Chamber Ambassador President.

Additionally, she serves as a Barton County Young Professionals Steering Committee Member. Chrest is married with two children and resides in Great Bend. As district coordinator, she will be responsible for training new associates and overseeing service within Ness, Hodgeman, Rush, Pawnee, Edwards, Rush, Rice, and Barton counties.

Aflac is a Fortune 500 company, providing financial protection to more than 50 million people worldwide. When a policyholder or insured gets sick or hurt, Aflac pays cash benefits fairly, promptly and directly to the insured. For nearly six decades, Aflac voluntary insurance policies have given policyholders the opportunity to focus on recovery, not financial stress.



THE MOST
*Wonderful
Time of the Year*

... to call, FaceTime, text, tweet, accessorize and capture memories.



3700 10th St. - Great Bend, KS
www.nextechwireless.com
877-621-2600



Nex-Tech Wireless is providing
Something Different
this holiday season.



CONCRETE SERVICE

**221 Baker St.
Great Bend, KS 67530**

**For ALL your
CONCRETE CONSTRUCTION
needs!**

**Owners: Roy & Dale Westhoff
Call: 620-792-2558**

2B Organized announces new franchise in Great Bend, Kan.

2B Organized, a professional organizing firm, announced the launch of a new franchise to serve Great Bend, KS and surrounding areas. Services include residential and commercial organization, home staging and relocation & move management.

The company offers logical solutions for organizing homes or businesses and helps to lighten the load of clients by assisting in the process of letting “stuff” go. Creating order while implementing efficient solutions.

For nearly 20 years, 2B Organized has been a successful organizing firm in Springfield, MO owned by Betsy Miller. In addition to the home office, there is another location in Springfield, MO as well as Columbia, MO.



OPI announces promotion in outside sales and new hire to enhance copy center services, products



Scottie Schmidt, OPI sales rep

Schmidt recently was promoted to outside sales representative and covers a few central Kansas counties. Previously, he delivered and installed office furniture.

“Now I call on between 100 and 125 businesses a week,” he said. “If they need office supplies, equipment or furniture, I can order it for them and arrange for quick delivery.”

Schmidt said this personal touch is important to small, medium and large companies.

“We want them to feel comfortable with

my visits and confident that OPI will deliver whatever they need. They don’t have to rely on a voice or a talking robot over the phone.” His territory includes Barton, Rice and parts of Ellsworth counties.

Jim Grabbe, OPI sales manager, said Schmidt impressed OPI and its customers during his first months on the job.

“Because of his outstanding service, we asked Scottie to take care of our customers in a sales capacity,” Grabbe said. “He gladly accepted the challenge and enjoys spending time with our clientele.”

“Scottie is a great addition to our team,” Grabbe added. “He is diligent about getting customers what they need as quickly as possible.”

When Lee Ann June started her new job at Office Products Inc., she rounded out the Copy Center team with her graphic design expertise.

June and Lana Besthorn, Copy Center associate, are now partners with Anita Bahr in taking care of customers’ projects – big and small.

“We can help customers with virtually any copying job from let-

terhead to invitations to posters, and our large-format printing service is really taking off,” June said. “As more and more people learn about it, they are coming to us for this service.”

“When it comes to new designs for print jobs, some customers outline the specifics of what they want. But for those who need advice about graphics, June is ready with new ideas.

“We can help you form an image of what you need,” June said. “But the goal is always the same - happy customers with products they like. This is OPI in a nutshell.”

Besthorn’s professional background includes 15 years at the Barton Community College Copy Center. She lives in rural Claflin. June, a Great Bend resident, took college courses in graphic design and worked for six years at the former Lu’s Printing downtown.

OPI is at 1204 Main in Great Bend, 516 Broadway in Larned and 724 N. Main in Russell.



Lana Besthorn, foreground, and Lee Ann June collaborate on many projects at the Office Products Inc. Copy Center. June is the new graphic artist at OPI.

Teresa Malone, PT
Megan Beahm, PT
Dan Quillin, PT
(620) 792-7868

Advanced Therapy
& SPORTS MEDICINE

3715 10th Street in Great Bend, KS
www.AdvanceTherapyGB.com

KELLER
REAL ESTATE &
INSURANCE AGENCY, INC.

“Serving Great Bend Since 1968”
www.kelleragency.com

620-792-2128 or 1-800-281-2181
1101 Williams, P.O. Box 945
Great Bend, Kansas

Community Bank
OF THE MIDWEST
www.communitybankmidwest.com

100% LOCAL OWNERSHIP 100% Committed to our community

Great Bend Otis Ness City Ellinwood
620-792-5111 785-387-2241 785-798-3950 620-564-3700

**It’s hometown banking
with hometown people.**



Ribbon cutting for Clara Barton Medical Center's new Great Bend location

Clara Barton Hospital and Clinics is pleased to announce the opening of extended services at our Great Bend location. Clara Barton Medical Clinic- Great Bend will now be offering family practice through PA-C, Kelci Burkey, Debra Brockel, PA, Dr. Nathan Knackstedt, and Dr. T. Scott Webb will also see patients at this location.

The staff at Clara Barton enjoyed celebrating the new clinic's opening. Members from the Chamber of Commerce hosted a ribbon cutting to welcome the clinic to Great Bend, which was followed by refreshments, door prizes, and walk-through tours of the clinic.

The increased services at the new location will help accommodate the increased demand in the area and improve patient experience and convenience. The clinic is at 1031 Jackson, Great Bend, KS 67530, in Jackson square. It offers six exam rooms for providers to treat patient's acute and chronic illnesses through family practice. The clinic offers short wait times and can usually offer same day appointments.

Appointments can be scheduled with Burkey on Mondays, Tuesdays, and Fridays, with Brockel on Thursday mornings, or with Webb on Thursday afternoons. Dr. Nathan Knackstedt will serve as the medical director for the clinic and has scheduled appointments on the first Tuesday of the month. For an appointment please call (620) 793-6990. The Great Bend location will continue to offer surgical clinic services on Wednesdays and specialists on Fridays.

Clara Barton Hospital is a Critical Access Hospital, Skilled Swing Bed Facility, and Level IV Trauma Center, located in Hoisington, KS. While operating on the cutting edge of medical technology, Clara Barton provides diagnostic and treatment services to patients in and around Barton County through Clara Barton Hospital, Clara Barton Medical Clinic of Hoisington and Great Bend, Russell Family Medical Care, Clara Barton Surgical Services, Clara Barton Specialty Outreach Clinic, and Clara Barton Surgical Services-Orthopedics. For more information about Clara Barton Hospital and Clinics, visit www.clarabartonhospital.com or ask your medical provider.

@ClaraBartonHosp www.facebook.com/clarabartonfoundation

Animal Medical Center hosts ribbon cutting for new clinic, services

Animal Medical Center recently expanded its presence to the Ellinwood community with the opening of a new satellite clinic on Oct. 20, 2015.

The Ellinwood satellite clinic's hours are 8 a.m. to 5 p.m. on Tuesdays and Thursdays with appointments being booked from 1-5 p.m. with a veterinarian on those days. Animals who need more urgent attention can always make an appointment at the Great Bend clinic and as always, the 24-hour on-call service is still available for emergencies after regular business hours.

Services include well-care appointments for companion animals, vaccinations, ear cleanings and treatments, dispensing cattle products and vaccines, refilling prescriptions, and more. Limited equine services are also available such as vaccinations and baseline exams if scheduled in advance. Grooming Services are also now available on the first Saturday of each month. Any services unavailable at the Ellinwood Clinic can easily be referred to the Great Bend facility when needed.

For more information, visit www.myamcvets.com, call 620-792-1265, or like Animal Medical Center on Facebook.



WELCOME to these NEW Chamber members!

Heartland Taxes & More
Cindy Parr
P.O. Box 344
Great Bend, KS 67530
620-793-5885
www.heartlandtaxes.com
Accountants —Public

Trinity United Methodist Church
Rev. Reuben Langat
5700 Broadway
Great Bend, KS 67530
620-793-6016
www.gbtrinumc.com
Churches

Sage
Your local janitorial provider.
800-825-5475
www.officialsageproducts.com
sage@officialsageproducts.com

Entertaining Family?
✓ You take care of their plans.
✓ We'll take care of their comfort.

Best Western
BEST WESTERN Angus Inn
2920 10th Street • Great Bend, KS
Take a virtual tour at bwangus.com!
620-792-3541

MURRAY
CHIROPRACTIC CENTER
"Therefore, if anyone is in Christ, he is a new creation; the old has gone, the new has come!"
- 2 Corinthians 5:17
Danny Murray, D.C. • Scie Murray, D.C.
2100 Kansas Avenue • Great Bend, KS
620-792-1386
www.murraychiropracticcenter.com



United Way of Central Kansas

1125 Williams in Great Bend, KS 67530
Office Phone: (620) 792-2403
unitedwayofcentralks@hotmail.com

Submitted by Executive Director Julie Smith

United Way campaign update

The United Way of Central Kansas annual fundraising campaign is winding down and we are 70% of the way to our goal of \$275,000. We are still out doing presentations at local businesses to discuss payroll deduction contributions to the United Way and are continuing to accept donations to help us support our 19 Community Partners in Barton & Pawnee Counties.

Each quarter, the United Ways of Kansas State Association meets to discuss important issues, brainstorm new ideas, and problem solve as a group. This past month, UWCK was the host to executive directors from across the state including, UW of Flint Hills, Greater Topeka, Douglas County, Wyandotte County, Reno County, Finney County, Leavenworth County, Ellis County, and Salina Area. Attendees were impressed with Great Bend, the Chamber of Commerce, and Baked Blessings.

On Nov. 7, the Kansas Sidewinder's MC in Ellinwood hosted our annual Casino Night. This night of blackjack, prizes, drinks, and food is always a highlight of our campaign, and this year was no exception. Thanks to the Sidewinder's hard work, over \$4,000 was raised for UWCK!

We also had our 2nd annual Dress Down the Town event and we want to extend our greatest appreciations to those who participated in the event on Nov. 18. More than 30 businesses in Barton & Pawnee County joined the United Way and wore jeans for a \$1 donation, and a chance to win a free pair of jeans from The Buckle. One person from each participating business has been entered in the final drawing, and the winner will be drawn Dec. 3rd at 6 p.m., at The Buckle. Finalists must be present to win.

We continue to work on our Literacy Kit project and hope to have all the flashcards cut out by the end of the year, and begin assembling the kits at the beginning of the year. Due to the interest in this project, we have had great participation from local businesses and organizations in volunteering their time to help. Participating businesses and organizations include Heartland Christian Church youth group, CUNA Mutual Retirement Solutions, Credit Union of America, Farmers Bank & Trust, Great Bend Public Library, and Lincoln Elementary School. If you are interested in helping with this project, please contact us at 620-792-2403.



Great Bend
REGIONAL HOSPITAL

*Committed to and
Caring for the Community*

514 Cleveland | Great Bend
620-792-8833

www.gbregional.com



BARTON COUNTY
Young Professionals
LEAD. NETWORK. VOLUNTEER.

Check out our NEW
BCYP website:
www.bartonyop.com

Grossardt named Eagle account executive

KHOK afternoon air personality Phil Grossardt has been added to the sales team at Eagle Communications, Great Bend, according to Market Manager Randy Goering.

In addition to hosting afternoons Monday through Saturday on 100.7 FM, Grossardt will handle sales accounts, voice commercials and perform other programming duties. "We're really excited to add Phil to Sales Team" Goering said. "His understanding of the community and dedication to serve the customers makes him a great match for us and for our advertising clients."

Grossardt has been in various positions with Eagle Communications and Hull Broadcasting since 1999, and in 2001 became the first station manager of KBGL-FM when its format was Oldies. Grossardt began his broadcasting career at Barton County Community College in 1973, which led to part-time employment at KCKT-TV, now KSNK. He joined KSAL Radio after graduating from Kansas State University in 1977 and was program director and morning show host of KHOK-FM in Hoisington from 1979 through 1980.

In addition, he also voices commercials for numerous broadcast outlets and advertising agencies and is a staff announcer for Sunflower Broadcasting and its TV stations in Wichita, Hays and Dodge City.

For more information contact Randy Goering or Phil Grossardt at the Eagle Media Center in Great Bend at 620-792-3647.

GBRC longest pheasant tail feather contest

Pheasant hunters, bring the tail feather from your prize bird to the Great Bend Recreation Commission to enter it in the Longest Tail Feather contest. The contest will run through the 2015/16 pheasant hunting season. The winner will receive a \$30 Chamber gift certificate donated by Smokin Aces Gun Shop. To enter your feather, stop by the GBRC (1214 Stone Street) Mon. - Fri., from 8:30 a.m. - 5 p.m. All entries must be turned in by 5 p.m., Wednesday, Feb. 3, 2016. Entries will be property of the GBRC. For more information, call the Recreation Commission office at 793-3755 ext. 2.

Why Guess?

Great Bend Chamber Gift Certificates:

- are available in any increment over \$5!
- can be used at over **140+ local businesses!**
- support the economy by protecting jobs!
- can be pre-ordered to save time!
- allow the recipient to choose what they **REALLY want!**

Great Bend Chamber
of Commerce & E.D.

1125 Williams
620-792-2401

Open Weekdays
9 a.m. to 5 p.m.

Open Until 7 p.m.
December 23rd!

Great Bend
CHAMBER OF COMMERCE
AND ECONOMIC DEVELOPMENT
www.GreatBend.org





Celebrating 49 years of serving people with developmental disabilities.

“The Choice for Growth.”

www.sunflowerdiv.com

CHAMBER COFFEE SCHEDULE THURSDAYS AT 9:30 AM

Dec. 3, 2015
First Presbyterian Church
2400 Washington

Called by God and guided by the Holy Spirit, the mission of the First Presbyterian Church, Great Bend, Kansas, is to worship God, grow in our knowledge of God’s love, reach out to make new disciples, and commit our lives to Jesus Christ, our Lord and Savior.
Sunday Worship at 10:45 a.m. | www.fpcgb.org

Dec. 10, 2015
Habitat for Humanity
Chamber Board Room, 1125 Williams

Habitat for Humanity has been in Barton County since 2001. Our non-profit organization gives a hand up, not a hand out. All the donations we receive are used to build or remodel homes for our partner families, who then purchase the home through a zero-interest, 25-year mortgage.

Dec. 17, 2015
Community Bank of the Midwest
2200 Broadway

Meeting the needs of your busy lifestyle. Find us online at Community-BankMidwest.com

Dec. 24, 2015
No Chamber Coffee • Merry Christmas!

December 31, 2015
No Chamber Coffee • Happy New Year!

Jan. 7, 2016
Thrivent Financial
Chamber Board Room, 1125 Williams

Thrivent Financial is a fortune 500, not-for-profit company that helps our member owners be wise with money. Visit with Melinda Kurth to see how she can help you connect your faith with your finances!



3307 10th Street • Great Bend, KS 67530

McDonald's

is providing coffee for Chamber of Commerce coffees.



DOVE Chevrolet
Buick Cadillac

Your Silverado Truck Center

4217 10th Street in Great Bend, KS

620-792-8266

See Steven, Marty or Rob for a

GREAT DEAL!

www.dovechevy.com

Economic Outlook

Employment – Barton County	Aug. '14	Aug. '15
Labor Force	17,879	14,773
Employment	17,295	14,122
Unemployment	584	651
Unemployment Rate	3.3%	4.4%
KS Unemployment Rate	4.9%	4.5%

City/County Local Sales Tax Distributions Report	Aug. '14	Aug. '15
Sales Tax for Barton County at 1.00%	\$455,886	\$425,150
Sales Tax for Great Bend at 0.75%	\$243,70	\$232,969

Building Permits	Aug. '14	Aug. '15
Commercial – GB	4	6
Residential - GB	25	77

Sources:

City of Great Bend, www.greatbendks.net
Kansas Department of Revenue, www.ksrevenue.org
Kansas Department of Labor, www.klic.dol.ks.gov

