



OUTLOOK BUSINESS JOURNAL

A MONTHLY PUBLICATION OF THE GREAT BEND CHAMBER OF COMMERCE AND ECONOMIC DEVELOPMENT

Great Bend Transload Facility Groundbreaking

2:00 pm Wednesday, July 6, 2016

The Great Bend Industrial Airport at 8th Street and C Street



**SHERWOOD
COMPANIES**



July 6, 2016 marks the first step of construction for the new Great Bend Transload facility. The public is invited to attend the “turning of dirt” ceremony when all of the partners who have played a part in the development and vision for this project, will come together for this special event.

The goal and mission of The Great Bend Transload facility is to provide multimodal, environmentally sound freight transportation solutions that increase market reach, economic development opportunities and job creation.

Last year Great Bend and Garden City were selected from 111 applications throughout the state of Kansas to develop a Transload facility in partnership with The Kansas Department of Transportation. According to John W. Maddox, CPM – Program Manager Bureau of Transportation Planning - Freight and Rail Unit, Great Bend was one of the top applications, and several factors played into the site selection committee’s favorable decision for Great Bend. “The Great Bend project exemplifies exactly what the committee was seeking - a regional approach, solid business partnerships, and the willingness to grow based on market demand.”

The Kansas Department of Transportation (KDOT) has committed \$3 million dollars to the project and will monitor the ongoing progress and success. KDOT Secretary Mike King and other officials will attend the ground breaking event scheduled for 2:00 pm on Wednesday, July 6, 2016 at the Great Bend Industrial Airport at 8th Street and C Street.

Other key partners in the development of the Great Bend facility are:

Watco Companies, the owner of The K&O Railroad which runs throughout the facility, will provide expertise in the areas of rail rehabilitation and design, the construction of new rail tracks, and marketing of the facility.

Sherwood Construction and OCM Materials will operate the facility and has extensive expertise specifically in the area of aggregate and materials. With the experience of operating the Oklahoma City OCM Transload Facility, Sherwood seemed a natural partner for the Great Bend facility.

Fuller Industries will provide warehouse space, a key feature when talking with new business prospects.

The City of Great Bend, with leadership from The Mayor and City Council, offered a very favorable lease rate for the 29 acres of City-owned land, on which the Transload facility will be developed.

The Great Bend Chamber of Commerce & Economic Development was the coordinating organization for all of the application processes, has fielded numerous calls from prospective businesses seeking information on the facility and will assist in all marketing efforts.

Shortly after the groundbreaking, crews will begin to build new rail lines and upgrade portions of the current rail system. In addition, 8th Street from Airport Road leading into facility will be upgraded, and loading equipment and machinery will be purchased. The facility is anticipated to begin operations in the 4th quarter of this year. Congratulations to all of the partners who have made this project a reality. It has been an amazing collaboration!



BUSINESS I.T. SOLUTIONS

YOUR TRUSTED TECHNOLOGY PARTNER



NEX-TECH.COM/BUSINESS

3700 10th St. • 792.3908

Healthy Kansas Hospitals Centers of Excellence Awarded to Clara Barton



CLARA BARTON
Hospital



HEALTHY
KANSAS
HOSPITALS

HEALTHY OPTIONS ARE THE ROUTINE, EASY CHOICE.

Since April of last year, something extraordinary has been taking place at Clara Barton Hospital. Both within the hospital and far beyond, leaders and staff have become champions of change by embracing a dramatic shift in the organization's food and beverage policy. Their ultimate goal is to lead the way to better health for all of Barton County, where chronic illnesses, many of which are tied to poor diet and lack of exercise, are on the rise.

"To have healthier communities, we as health care providers must lead by example," says Jim Blackwell, President and CEO. "It starts with us—with the health of our hospital leadership and staff—and from there we create new opportunities to improve public health."

Those were the driving forces behind the hospital's pledge last year to join the Healthy Kansas Hospitals initiative, which is a project of the Kansas Hospital Education and Research Foundation. The program's goal is to help hospitals provide healthier food and beverage options throughout the facility for hospital employees, patients and visitors. Clara Barton Hospital's efforts as a Healthy Kansas Hospital have been exceptional—award winning, in fact. For outstanding achievements and innovation, KHERF has selected Clara Barton Hospital as one of two 2016 recipients of the Healthy Kansas Hospitals Centers of Excellence Award. The hospital received the award and a monetary contribution to support its continued efforts at a special award ceremony on June 22.

Through new community partnerships with local organizations, including the Center for Wellness, the Be Well Barton County Committee and the local school district, Clara Barton Hospital is extending its reach in providing public education on specific health and wellness issues. "It's about creating a healthier environment for our community and helping people take ownership of their roles in chronic disease prevention and self-management," said Jane Schepmann, Chief Nursing Officer and head of the Wellness Committee. "We are practicing what we preach and spreading that energy out to the community, and I think that's a big part of our success so far—we are living out our mission."

The hospital continues seeking out new opportunities to build a healthier community. With top-down leadership guiding the way, the team at Clara Barton Hospital is confident they will see ongoing success. "The sustainability is within us as we continue to engage others, spread excitement and promote healthy behaviors from the inside out," says Blackwell. "We see this as a platform to partner with patients and bring the whole community on board with better health."

The Healthy Kansas Hospitals initiative is a project of the Kansas Hospital Education and Research Foundation. Established in 1969, by the Kansas Hospital Association, KHERF's mission is to facilitate collaboration and innovation to improve health delivery for Kansas communities. The Kansas Hospital Association is a voluntary, non-profit organization existing to be the leading advocate and resource for members.

For more information, visit HealthyKansasHospitals.org.

Look no further...

3-IN-1 BREAST CARE

- 1) **RADIOLOGY**
Digital Mammograms
- 2) **GENERAL SURGERY**
Biopsies & Mastectomies
- 3) **PLASTIC SURGERY**
Reduction & Reconstruction

Great Bend
REGIONAL HOSPITAL
A Physician Owned Hospital

514 Cleveland Street | Great Bend, Kansas
www.gbregional.com



Ambassador Profile - Melinda Kurth

The Ambassador Club is made up of 30 men and women from the Great Bend business community who represent the Chamber in a number of ways. They host the weekly Chamber Coffees, attend Business After Hours and Ribbon Cuttings, serve on Chamber committees, and assist with member recruitment and retention efforts. To find out more, contact us, 620-792-2401 or abauer@greatbend.org.



Where I Work

I am a Thrivent Financial representative focused on helping Christians reach a successful retirement! Currently I am developing expertise in a number of areas including, Life insurance, Mutual Funds and retirement planning. Most of my work is focused on young professionals specific to the small business industry and pre retirees.

Educational Background

After graduating from Lewis High School, I attended to Kansas State University to major in management. I have worked in Great Bend in the financial services field for nearly twenty years.

My Family

I have been happily married to my husband, Travis, for 19 years where we have made Great Bend our home! Travis is a Mechanical Engineer at Fuller Industries and has worked there for 20 years. We have one son, Townshend who is a sophomore at Great Bend High School, and two beautiful daughters, Daltrey who is going to be 7th grade and Myra who will be in 4th grade.

As an Ambassador

I have been a Chamber Ambassador for 2 years. I truly enjoy the opportunity to work with the Chamber and the other Ambassadors to promote our community and I love meeting new people along the way! We chose to make Great Bend our home because of the proximity to family and the career opportunities available to us, and choose to stay because of so much more.

Hobbies & Interesting Facts

As far as hobbies... I grew up on a farm so what don't I like to do! I love the outdoors... hiking, family walks or bike riding, watching my kids play sports, taking pictures, working cattle with dad, baking, volunteering and enjoying each and every day and the blessings God has given me.



Sizzling Summer Sidewalk Sale July 22nd

The Sizzling Summer Sidewalk Sale returns Saturday, July 22nd! The triple digit temperatures may be staggering, but so are the savings you can find during the much-anticipated annual event. Over two dozen stores participate by offering discounts, clearance markdowns, or special promotions. Grab

your wallet and your kiddos and head to participating retailers for a fun-filled day of exploring! For more information, contact City of Great Bend Community Coordinator Christina Hayes at 620-793-4111.

Outlook Business Journal
A monthly publication of the



1125 Williams,
Great Bend, KS 67530
Phone: 620-792-2401
Fax: 620-792-2404

Web address: www.greatbend.org

EXECUTIVE COMMITTEE

Chairman
Dennis Neeland, Great Bend Co-op Association

Vice Chairman
Paul Snapp, First Kansas Bank

Immediate Past Chairman
Kenny Vink, Office Products Inc.

Treasurer
Alan Burton, MPIRE Properties

BOARD OF DIRECTORS

Aaron Andrews
Coldwell Banker Sell Real Estate

Linda Bonewell
Fuller Industries, LLC

Taylor Calcara
Watkins Calcara, Chtd.

AJ Chrest
Aflac District Coordinator / Ambassador Club

Matt Dykes
Epoxy Poly, Inc.

Rebecca Ford
Catholic Charities of SW Kansas

Megan Hammeke
GBRC / Barton County Young Professionals

Kevin Keller
Keller Real Estate & Insurance Agency

Brandon Lawellin
Sutherlands

Rodrigo Razo
Playa Azul Mexican Restaurant

Leilani Schenkel, RN
Almost Home, Inc.

Aaron Spanier
Innovative Livestock Services

Marty Steinert
Dove Buick Chevrolet Cadillac

Nancy Sundahl
Mary Kay Cosmetics

EX-OFFICIO

Dr. Carl Heilman, Barton Community College

Vicki Berryman, Great Bend City Council

Brad Reed, USD #428

Jennifer Schartz, Barton County Commission

CHAMBER STAFF

Jan Peters, President/CEO
jpeters@greatbend.org

Andrea Bauer, Director of Sales & Member Services
abauer@greatbend.org

Maddi Kinkelaar, Marketing Coordinator
marketing@greatbend.org

Roxanne Rich, Office/Business Manager
rrich@greatbend.org

Melissa Hinton, Project Specialist
projects@greatbend.org

CONCRETE SERVICE

221 Baker St.
Great Bend, KS 67530

For ALL Your
CONCRETE CONSTRUCTION
Needs!



Call Kyle Walter for an Estimate!

Office: 620-792-2558

Mobile: 620-639-1026

ComfortPro Inc.

- Heating & Air Conditioning
- Plumbing
- Certified Radon Testing

Furnaces
Perform 90%
+ Efficiency



bryant

Heating & Cooling Systems

Satisfaction
Guaranteed!

Locally Owned
& Operated

Great Bend: 620-793-4208

Larned: 620-285-3966

Toll Free: 800-937-3030

New Merger Brings New Opportunities for United Way of Central Kansas



Hoisington United Way and the United Way of Central Kansas announced on June 9th that they will be merging under UWCK effective August 1st. All of Barton and Pawnee Counties will now be covered under a single United Way. The economic situation in our area prompted the idea to come together to better serve our communities and this process has been thorough and thoughtful, led by members of both United Ways. By joining forces and pooling the talents and resources behind these two entities, we believe that we will be able to have a greater impact on all the communities. This will also take some of the burden off of the numerous agencies that were being funded by both United Ways.

UWCK welcomes two new board members from Hoisington. Karen Van Brimmer, Hoisington Dispatch and HUW Executive Director, and Bill Lowry, USD 431 Superintendent, will help through this transition process and ensure that Hoisington is represented along with all the other communities that UWCK covers. Regan Ochs-Reif, Adams, Brown, Beran, & Ball will also be joining the United Way Board as a young leader and representing Great Bend. "We are so excited for all the changes that are coming this year. We have a new community, new board members, and will be funding new agencies. One thing that doesn't change though, is we need the support of our neighbors and friends to reach our goal. I believe that this can be a huge success and that, United, we can do great things." Julie Bugner-Smith, Executive Director, UWCK.

As the 2017 Campaign kicks off in August to raise \$275,000 to support our Community Partners, we invite you to join us at our Kickoff Event, "Stars & Stripes, United Way Forever" on August 13th. This is the largest fundraiser that UWCK hosts each year and we want to fill every seat. Social hour starts at 6:00, dinner made by the Knights of Columbus served at 7:00, and hilarious entertainment will wrap up the evening. This year's entertainer, John Bush, is a comedian who has appeared on Conan O'Brien, HBO Comedy Showcase and Comedy Central. Check out his video at johnbushcomedian.com. Join us for a night of laughs and patriotic fun! Visit www.uwck.org to get your tickets today!

SAVE THE DATE

Entertainment
JOHN BUSH

Stars & Stripes

UNITED WAY

Forever!

AUGUST 13, 2016

Tickets: \$50.00 ★ Table of 8: \$400.00

Knights of Columbus ★ 723 Main, Great Bend KS

Social Hour 6:PM ★ Dinner 7:PM ★ Entertainment to Follow

Can't make it, but want to help make a difference? Send your donation to United Way of Central Kansas, 1125 Williams, Great Bend, KS 67530.

Great Bend Regional Hospital Earns Gold Seal for Mammography



After months of reporting and an elaborate inspection, Great Bend Regional Hospital was recently awarded a 3-year term of accreditation in mammography from the American College of Radiology (ACR) and renewed its certification with the United States Food & Drug Administration (FDA). This dual process involves daily record keeping, annual reporting, and the tracking of numerous statistics to meet and exceed the federal Mammogram Quality Standards Act (MQSA).



"The reason every hospital undergoes rigorous quality inspections is to help make sure that we are producing the best quality images," says Heather Ewy, GBRH Radiologic Technologist. "There are over a dozen categories we have to report on, with hundreds of checkpoints we have to pass. It's a hard process, but ultimately it means we're doing everything we can to give our patients the best possible care."

In addition to the ongoing reporting required by the state and federal governments, part of the accreditation process involves ensuring that all the hospital's radiologists and technologists are up-to-date on their continuing education hours, and numerous samples of mammogram images are provided and inspected by the accrediting bodies. A state inspector also visits the facility to check up on the record keeping and quality control aspects of the department's operations.

"Following all the rules, mandates, and reporting criteria is of utmost importance, and most of it is done in the background where a patient will never see it," says Bill Henderson, Imaging Department Supervisor at Great Bend Regional Hospital. "Maintaining our gold seal for mammography is no easy task, but it is part of our dedication to patient care."

It is recommended that women over the age of 40 schedule a mammogram every year, as breast cancer is the second leading cause of death for women in the United States. To schedule your annual mammogram, contact the local healthcare leader at 620-792-8833.

CornerStone Automotive Celebrates Expansion

CornerStone Automotive is a family owned business in Great Bend, Kansas that provides quality auto repair services that are up to date with the latest in automotive technology. Their new facility is located at 4705 8th Street Great Bend, Kansas.



Save the Date! 23rd Annual Kids Ag Day

In celebration of "National Ag Week", we look forward to welcoming over 350 area 4th graders for a day of farm exploration & education! With the primary goal of helping students gain a better understanding of the agriculture industry and its importance to our local economy, community support is welcome in the form of sponsorships or volunteer time. Contact the Chamber Office for more information!

Community Fireworks Display July 4

To celebrate Independence Day on July 4, 2015, the City of Great Bend along with Sunflower Diversified Services and many other sponsors will host a Community Fireworks Display at the Great Bend Expo Complex. Gates will open at 7:30 p.m. The show is choreographed to music, and will begin at dusk. Eagle Radio will begin a live broadcast at 8:30 p.m. The show will begin as soon as it is dark enough. Read more on the calendar of events at www.greatbend.org.



NICHOLSON-RICKE Funeral Home



BRYANT Funeral Home

CELEBRATING LIFE

Helping Others Celebrate Life
for More than 100 Years...

Mike Nicholson refers to his career as a lifestyle – not a job. As president of Bryant Funeral Home in Great Bend and Nicholson-Ricke Funeral Home in Hoisington, he and his staff are ready to serve families at a moment's notice - 24 hours a day, seven days a week. He and his dad, Bill Nicholson, own and operate both facilities.

"This is a business like no other; it is more of a way of life," Nicholson said. "The people on our staff may be sitting down for Christmas dinner and their day can change immediately. We have to be prepared every minute of the day and stop whatever we are doing. "But this is what we want to do," he continued. "The families we care for are more important than anything else we have going on at the moment. They are going through one of the worst times of their lives and we want to support them."

The president of the businesses readily acknowledged that his staff is the backbone of both funeral homes. "Our facilities don't operate because of me," Nicholson said. "It takes all of us. We are gratified to help families, while building trust and friendships throughout the community." Staff members are: both Nicholsonsons, Chad Jerke and Larry Klusener, all funeral directors and embalmers; Stacey Czarnek and Dale Dawson, both funeral directors; Justin Engleman, office manager; and Marilyn Dyke, and John and Julie Hein, receptionists. "These people and my family are the ones who make it a pleasure to own a business," Nicholson said. "I couldn't do it without them."



Nicholson and his wife, Tammy, have four children; Ryan is 15, Drew, 13, Addy, 10, and Ben, 9. Nicholson joined both funeral homes in 1995, a few years after graduating from Kansas State University with a business marketing degree. "I started out by washing the cars and mowing the grass," Nicholson recalled. "Now I am a funeral director, embalmer and bookkeeper, and am licensed to sell pre-need insurance. I still do some of everything. "But one thing remains constant," he added. "We enjoy the relationships we build throughout the community. Barton County is a great place to own a business and raise a family."

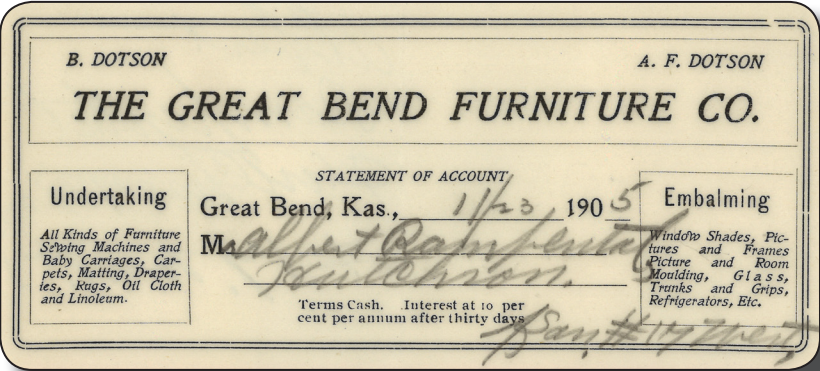
While services are varied according to families' wishes, the funeral homes offer traditional and cremation choices. "The family is also encouraged to itemize services that are right for them," Nicholson said. "You can provide personal touches specific to your loved one. "Funeral services are much more personalized today," he continued. "Ministers and families are sharing more information and talking about things that connect them to their loved one."

A funeral is not a cookie-cutter service anymore." In many cases, pictures of the loved one living life are displayed, which Nicholson said helps make people more comfortable. "People say things such as 'I remember this picture. He really did love to fish.' It helps break the ice among the mourners."

There are endless possibilities for the memorial folder that the funeral homes provide at services. "We can do pretty much anything they want with photos, favorite quotes, full color, different fonts and text," Nicholson said. "This all used to be fairly standard but we honor family requests and can customize these materials."

The funeral homes' staff members understand that these decisions are difficult to make when a family member or friend has just passed. Because of this, pre-planning is encouraged whenever possible. "The family can learn about a person's wishes in advance," Nicholson explained. "This relieves the stress on the family later on because they know what mom wanted."

Nicholson also noted that care and concern at Bryant and Nicholson-Ricke don't stop when the service concludes. The company provides guidance about grief support, as well as markers through Central Kansas Monuments. "Our clientele know that we care and we are there for them even after the services," Nicholson said. "We will do anything we can to guide them through a difficult time."



The history of Bryant Funeral Home, 1425 Patton, began when Lester Cox opened a furniture store and funeral parlor in 1899 at Main and Broadway in Great Bend. He later moved his business to the 1400 block of Main. In 1932, he closed the furniture business to concentrate on funeral services.

Bill Cook and Frank Weber bought the business when Cox retired; it became Cook and Weber Funeral Home. Ray Cornett joined the firm in 1939; he and Cook ran the funeral home for more than 30 years. Earl Bram bought it in 1972.

Gordon Brantley, Bill Nicholson and Ted Ricke purchased Cook and Weber in 1975. Larry Bryant joined Brantley a year later and the name changed to Brantley-Bryant Funeral Home, and later Bryant-Christians Funeral Home when Alan Christians became involved. In 2000, it became Bryant Funeral Home.





Phone: **620-792-5700**

1905 19th Street in Great Bend, Kansas

Family Practice & Mental Health Services

Preventative Care

Prescription Assistance

Diabetes Management

Evening Appointments

Open to Everyone

Bilingual Staff

All Insurance Accepted

Including Medicare, Medicaid & KanCare

"We Care About Your Health"

www.HeartofKansas.com



NOW OPEN!

at the GBRC Activity Center
2715 18th Street



Great Bend Recreation Commission

620-793-3755

GreatBendRec.net



Young Professionals Spotlight

A monthly update on the activities and events for members of the Barton County Young Professionals Group

During the month of June, the Barton County Young Professionals group actively participated in the Great Bend Business Olympics, which took place during the Annual June Jaunt Festival. Several members competed with the participating teams, including the winning team from Eagle Radio.

On June 17th, members of the Barton County Young Professionals gathered at Golden Belt Printing for a joint Business After Hours & Networking Mixer. This was a great opportunity for YP to tour the printing facility and learn about all the services they have to offer.



YP Members had the opportunity to win a special prize. Pictured are the nights lucky winners, Jacob Chrest and Rachel Mawhirter.

On July 24th YP members are invited to bring their families to the Annual Family Pool Party and Barbecue at Club West in Great Bend, Kansas. Sponsored by Farmers Bank & Trust, this event is FREE for members and their families. Join us for Papa Murphy's pizza, and pool fun. Reservations are requested so that we will have adequate food and refreshments available. RSVP to Special Events Team volunteer Katie Lear, katiejlear@gmail.com, no later than Wednesday, July 20th at 9 p.m.

Keep up with news and events for Barton County Young Professionals by joining the Facebook group and by signing up for the YP email newsletter.

Want to Join?

Anyone who works in Barton County between the ages of 21 and 40 is welcome to join the growing group at any time. For more information or to join, email bartonnyp@gmail.com. Be sure to join the group on Facebook!

Barton Trustee Mike Johnson elected president of Kansas Association of Community College Trustees

Barton Community College's Board of Trustees Chairman Mike Johnson has been elected President of the Kansas Association of Community College Trustees (KACCT).

The KACCT membership includes the elected trustees from all 19 of the state's community colleges. These schools represent a total enrollment of more than 115,000 students. Johnson has served on the executive committee for the KACCT the past several years and this will be his second term as president. The mission of KACCT is to "Build better futures through cooperation, collaboration and communication in advocating on behalf of community colleges to better serve Kansas constituencies."



Johnson is currently serving in his fifth term on the Barton Board of Trustees.

Barton County Fair Returns July 6-10

The Barton County Fair Association is excited to announce that the annual Barton County Fair will return July 6-10, 2016, and an awesome line-up of activities will draw thousands to the Great Bend Expo Complex during the five-day event.

In addition to all sorts of exhibits from 4H competitors, an Wagner's Carnival from 6-11 p.m. daily, and food vendors, the Barton County Fair has several exciting concerts scheduled.

CONCERT SCHEDULE:

Thursday, July 7th - Sidewalk Prophets (Christian)

Friday, July 8th - Stoney LaRue with special guest Forgotten Highway Band (Country)

Saturday, July 9th - HELLS BELLS (a Tribute) with special guest The Banned



Highlighted Events for Wednesday, July 6:

8:00 AM-12	Check in all exhibits 4-H & Open Class
8:30 AM	4-H Foods Sale after judging
2:00 PM	4-H Rabbit Show (Expo III)
4:00 PM	4-H Poultry Show (Expo III)
5:00-10 PM	Commercial Exhibits (Expo I)
6:00-7 PM	Late Check in of Open Class Exhibits
6:30 PM	4-H Youth Rally (Expo III) Barn Yard Olympics Movie Night @ the FAIR <i>Sponsored by The City of Great Bend</i>

Highlighted Events for Thursday, July 7:

9:00 AM	4-H Swine Show
11:00 AM - 1 PM	Barton Co. Fair Ag Challenge of Champions, FACS Judging, Livestock Skillathon Contest (Expo II)
2:00 PM	Woodworking; Judging of Open Ag
5:00-10 PM	Commercial Exhibits Open (Expo I)
6:00 PM	4-H Bucket Calf Show (Expo III) Dog Agility Demo (Expo III) Wagner's Carnival

Highlighted Events for Friday, July 8:

7:30 AM	4-H Dairy Goat Show
9:00 AM	4-H Meat Goat Show
11:00 AM	4-H Sheep Show
5:00 PM	4-H Beef Show (Aaron's Repair Arena)
7:00 PM	Round Robin Practice
5:00-10 PM	Commercial Exhibits Open (Expo I)
6:00 PM	Wagner's Carnival
6:30 PM	Fashion Show

Highlighted Events for Saturday, July 9:

8:00 AM	4-H Horse Show (Outdoor Arena)
9:30 AM	Mutton Bustin' and Kids Ranch Rodeo
10:00 AM	The Bernard J Ohnmacht Memorial Shepherd's Lead Open Class Sheep Show
11:00 AM	Commercial Exhibits Open (Expo I)
1:00 - 10 PM	Antique Tractor Pull (North of Expo III)
1:30 PM	Kids Pedal Tractor Pull (Expo II)
2:30 PM	Adult Pedal Tractor Pull Directly after the Kids (Expo II)
3:00 PM	Back Seat Drivers Contest
5:00 PM	Community Bank Watermelon Feed
6:00 PM	ATV Rodeo (Outside Arena)
6:00 PM	Wagner's Carnival
7:00 PM	Gary Ewing Memorial Swine Show

Highlight of Events for Sunday, July 10:

9:30 AM	Sunrise Breakfast after service
10:30 AM	4-H Small Animal Round Robin 4-H Livestock Round Robin Showmanship Contest
11:30 AM	4-H BBQ (Expo I)
2:00 PM	4-H Showcase Awards Farm Bureau Assn. Root Beer Float Social
2:30 PM	Sale of Champions
4:00 PM	Buildings Close
6:00 PM	Wagner's Carnival

For more information and a full list of events visit

<http://www.bartoncountyfair.com/>

Meet Our Veterinarians

DR. MATT FEHR

Expert in Animal Chiropractic & Acupuncture
Dave Ramsey Entrepreneurship Graduate
Boy Scouts Leader & Shriner Member



ANIMAL MEDICAL CENTER

Great Bend (620) 792-1265
& Ellinwood (620) 564-3009

Business Showcase & Teacher Appreciation Event

GREAT BEND
428

The Great Bend Chamber of Commerce & Economic Development with USD 428 to facilitate a teacher appreciation event, the Great Bend Business Showcase. The event will take place Monday, August 15th from 10:30 a.m. to 12 p.m. in the Panther Activity Center at Great Bend High School, and will be open to the 700+ employees of USD 428.

"The Business Showcase is a great opportunity to connect the 700+ employees of USD 428 with the Great Bend Business Community. Building on last year's success, we expect the event to grow with more booth spaces in the PAC and hope businesses will take advantage of this opportunity to showcase their products & services," says Andrea Bauer, Director of Sales & Membership Services of the Great Bend Chamber of Commerce & Economic Development.



There is no cost for chamber members to reserve an exhibit space, and each company is provided with one six-foot table and two chairs. Businesses interested in exhibiting should contact the Great Bend Chamber of Commerce & Economic Development Office or register online at

<https://fs23.formsite.com/abauer/form20/index.html?1466093710720>.



Salvation Army to Host Back-To-School Supply Drive

Summer time means that back to school is right around the corner! This year The Salvation Army will again be hosting a back to school drive for Barton County. The drive will start the beginning of July and run until Aug 7th with drop off locations around town including The Salvation Army Store, The Great Bend Chamber of Commerce & Economic Development, and Marmie's of Great Bend. The Salvation Army does not provide all of the school supplies that children will need. However, we would like to provide pencils, highlighters, markers, notebooks, notebook paper, binders, school bags, dry erase markers, erasers, crayons, scissors, boxes of facial tissue, and pocket folders. Sign up for backpack donations will run from July 25th to August 6th. Distribution of the bags will be August 9 at The Best Western in Great Bend. If you are interested in volunteering, making a donation, or would like to sign up please stop by 2545 10th St in Great Bend or call 620-792-4299.



Farmers Bank & Trust Annual Hometown Appreciation BBQ July 7

Farmers Bank & Trust invites you to their Annual Hometown Appreciation BBQ to be held on Thursday, July 7th. Friends, neighbors and customers are invited to stop by the Great Bend Events Center from 11:30 a.m. to 1:00 p.m. for BBQ lunch, root beer floats, prizes and the chance to become a finalist in the 2016 GMC Terrain Giveaway. Don't miss the special ceremony at noon, highlighting 25 years of the Barton County Fair.

The Center
FOR COUNSELING & CONSULTATION

A Licensed Community Mental Health Center

- Individual & Family Counseling available in Great Bend, Larned, Lyons, and St. John
- Medication Consultation
- Addiction Assessment & Recovery

Serving the Mental Health Needs
of Central Kansas Since 1967

**5815 Broadway
Great Bend, KS
1-800-875-2544**

www.thecentergb.org

Craft Brew Expo, Barbecue and Cycling Event to Benefit Cystic Fibrosis Foundation

The inaugural Bike Brew Q event in support of the Cystic Fibrosis Foundation (CFF) is set for July 30 at the Great Bend Expo Complex. The event features three staples of summer: cycling, barbecue and craft beer. Cycling is optional. Tickets will be available beginning June 6 at bikebrewq.com. The Bike Brew Q team has partnered with the CFF to put on this official, sated benefit.



Craft Beer Expo and Barbecue Event

The Craft Brew Expo portion of Bike Brew Q will be from 1-4 p.m in Expo II. Tickets are \$35 and include a free pint glass upon exiting the event. The top craft breweries in the region including Defiance Brewing of Hays, Tallgrass Brewing of Manhattan, Boulevard Brewing of Kansas City, Mo., Lb. Brewing of Hays and more will be in attendance. Barbecue vendors will begin serving at 11 a.m. Attendees can purchase food directly from vendors. Food is not included in the price of a Craft Brew Expo ticket. There are limited quantities of Brew Expo tickets.



Cycling Event

Riders can pre-register at bikebrewq.com on June 6. Registration on the day of the event will begin at 6:30 a.m. at the Great Bend Expo Complex. The rides will start at 7:30 a.m. Riders will be able to choose from three different rides: a 20-mile road ride, a 62-mile (Metric Century) road ride, and a 30-mile gravel ride. Registration is \$20 for every ride except the 62-mile ride, which is \$25. All riders will receive a limited edition Bike Brew Q t-shirt. The ride is self-supported with optional SAG stops (rest stops) along the way. There are no limitations to the number of riders who can register for the cycling event.

More about the event

The event was founded by Ryan Fairchild of Great Bend as a way to raise money for the CFF to fund research for treatments of cystic fibrosis and hopefully, a cure. Ryan's wife, brother-in-law and cousin all suffer from the illness.

"I established this event as a vehicle for spreading knowledge of a disease that is still unknown to many," he said. "Our goal is to aggressively fundraise for the CFF while providing a welcoming atmosphere for participants. Also, I love cycling, barbecue and craft beer!"

Craft Brew Expo Director Joe Vinduska was very excited to not only raise money for a good cause, but to help put a spotlight on craft beer in the area as well.

"When Ryan approached me about working on Bike Brew Q I was immediately interested," he said. "To be able to celebrate these things I love and at the same time help raise money for the CFF was just a no-brainer. Craft beer is something anybody can get into and enjoy. There is so much out there to discover."

For more information on the Craft Brew Expo, email Vinduska at joe.vinduska@bikebrewq.com.

For more information on the Cycling Event, or if you would like to become a sponsor email Fairchild at ryan.fairchild@bikebrewq.com.

Chamber Radio Show



Tune in to KVGB 1590 AM on the first Thursday of every month to hear Eagle Radio's Patrick Burnett discuss the latest Chamber happenings with Marketing Coordinator Maddi Kinkelaar. This month's show will air on Thursday, July 7th at 11:35 a.m.

Welcome to Our Newest Chamber Members

Arnberger For Kansas House of Representatives Tory Arnberger

1221 McKinley St
Great Bend, KS
620-617-5194

Individual



HR Roundtable

Tuesday, July 26th – 11:30 a.m.

The Page Meeting Rooms
"Best Leadership Practices"

Presenter: Ruth A. Bealer,
SPHR, SHRM-SCP

Chamber Office Closed Fourth of July

The Great Bend Chamber of Commerce & Economic Development will be closed Monday, July 4th in observance of Independence Day. We will resume normal business hours on Tuesday, July 5th.



Celebrating **50 Years**
of Serving People with
Developmental Disabilities!

“The Choice for Growth.”

Early Education
Case Management
Disability Supports
Residential Assistance
Community Employment
Recycling & Manufacturing
General Public Transportation
And MUCH More!

www.sunflowerdiv.com

CHAMBER COFFEE SCHEDULE

Every Thursday at 9:30 am

July 7, 2016

Barton County Fair – Expo II Building

(Business Appreciation Breakfast & Coffee Start at 7:30 a.m.)

Beat the heat and come out early as we join The Barton County Fair is celebrating its Silver Jubilee. It is hard to believe that we're turning 25 but the fun continues at the most decorated fair in Kansas by the International Association of Fairs & Expos. Bring the whole family July 6th – 10th. There's something there for everyone.

July 14, 2016

Sunflower Bank – 3600 10th Street

Sunflower Bank is a \$1.7 billion community bank, offering a complete line of personal checking, saving, mortgage and loans options, as well as business deposit, loan and treasury management services and trust and wealth management solutions. The Bank's commitment to local businesses and economic growth helps expand and create possibility in Great Bend, Ellinwood, and beyond. Call 620-792-2181 or visit SunflowerBank.com to learn more.

July 21, 2016

Author: Darcy Leech – Chamber Board Room

Local author Darcy Leech released *From My Mother*, March 29th. Darcy is dedicated to promoting awareness for muscular dystrophy and sharing the faith story of the strongest woman she will know. Join Darcy to hear about her book, the power of online reviews for a business, and her offer to be a free guest speaker.

July 28, 2016

Best Western – 2920 10th St.

Best Western Angus Inn has been a fixture on 10th Street in Great Bend for almost 40 years! The hotel is equipped to accommodate everyone from the corporate traveler to class reunions to ball teams, and everything in between. The indoor courtyard, where the coffee is located, is perfect for hosting events & gatherings.

August 4, 2016

Barton County Academy – 5220 W. 10th St.

Barton County Academy provides High School Diplomas through sponsorship by School Districts in Ellinwood, Hoisington, and Great Bend. We also provide English classes for those new to Great Bend.



DOVE CHEVROLET
BUICK CADILLAC

Great deals on remaining 2016's
Huge selection of Silverado pickups
Vacation ready crossovers
Fuel efficient 4dr sedans
“Come See Us!”

www.dovechevy.com
Located at 4217 W 10th Street
Great Bend, Kansas / 620-792-8266



3307 10th Street • Great Bend, KS 67530
McDonald's
is providing coffee for Chamber of Commerce coffees.