

# OUTLOOK

**GREAT BEND**  
CHAMBER OF COMMERCE

JANUARY 2022  
VOLUME 101 NO. 1

A MONTHLY PUBLICATION OF THE  
GREAT BEND CHAMBER OF COMMERCE

business journal

1921



2021

## Board of Directors Set, Executive Officers Elected

# 2022



Jerry Renk,  
2022 Board Chair



Shelly Peacock,  
Vice Chair



Robert E. Bauer,  
2nd Vice Chair



Pete Wesner,  
Past Chair



Mike Miller,  
Treasurer

With the changing of the calendar year comes a change in leadership and new set of goals for the Great Bend Chamber of Commerce Board of Directors. — Continued on Page 2



Jim Blackwell



Sue Cooper



Scott Dewerff



Wally Eldridge



Chuck Fellhoelter



Randy Goering



Ana Hayson



Mike Johnson



Matt Kurtz



Jessica Milsap



Leslie Mingenback



Regan Reif



Douglas Reiser



Todd VanSki



Chris Wagner

### EX-OFFICIO:

Tory Arnberger-Blew ..... Kansas State Legislator  
Megan Hammeke .. Ambassador Club (Great Bend Recreation Commission)  
Sara Hayden ..... Great Bend Economic Development  
Christina Hayes ..... Great Bend Convention & Visitors Bureau

Dr. Carl Heilman ..... Barton Community College  
Shawn Hutchinson ..... Barton County Commission  
Lindsey Krom-Craven ..... City of Great Bend Council  
Julie Mazouch ..... BCYP (Peoples Bank and Trust)  
Khris Thexton ..... USD 428



here for you

**WE DO I.T.**

CLOUD  
INFRASTRUCTURE  
MANAGED IT  
SECURITY

nex-tech.com/business • 800.588.6649



## Committed to Caring for the Great Bend Community

Providing the Great Bend community greater access to the resources of the only academic health system in Kansas. Together, we are committed to ensuring the continued well-being of this community, close to home.

kansashealthsystem.com/greatbend

While the main areas of focus for the Chamber remain Advocacy for Business, Marketing & Promotion, Investment in the Future & Member Services, new initiatives or goals seem to emerge based on the leadership of the executive committee to tackle issues or enhance the Chamber's role in the community. The Chamber embarks on each New Year with optimism and excitement for what new programs or services might emerge for their members.

The 2022 Executive Committee will be made up of Jerry Renk (Golden Belt Community Theatre) as Chairperson, Shelly Peacock (TCI Answering Service) as Vice Chair, Robert E. Bauer (Bauer, Pike, Bauer, Wary & Carroll LLC) as 2nd Vice Chair, Pete Wesner (CUNA Mutual Retirement Solutions) as Immediate Past Chairman, and Michael Miller (Ronald L Miller Public Accounting) as Treasurer.

In addition, the Chamber welcomes seven new members to its diverse board, representing a wide range of industries and backgrounds. Beginning three-year terms are Jim Blackwell (Clara Barton Medical Center), Wally Eldridge (Eldridge Fencing), Chuck Felthoelter (Peoples Bank and Trust), Matt Kurtz (Identifications), Mike Johnson (M and M Equipment Company), Jessica Milsap (MPIRE Realty Group), and Chris Wagner (Great Bend Co-op). Representing the Chamber Ambassadors in 2022 is Megan Hammeke (Great Bend Recreation Center), and representing Barton County Young Professionals is Julie Mazouch (Peoples Bank and Trust).

## Continued from Page 1

Continuing their service on the board is Sue Cooper (Barton County / Central Kansas Partnership), Scott Dewerff (KanEquip), Randy Goering (Eagle Radio), Ana Hayson (Rana Luna Boutique), Leslie Mingenback (Miss Pretty Pickles / MyTown), Regan Reif (University of Kansas Health Systems), Douglas Reiser (Central Kansas Surveying & Mapping, Inc.), and Todd VanSlike (Golden Belt Bicycle Company).

Ex-Officio board members are Khriston Thexton (Great Bend Public Schools), Shawn Hutchinson (Barton County Commission), Dr. Carl Heilman (Barton Community College), Christina Hayes (Great Bend Convention & Visitors Bureau), Tory Arnberger-Blew (Kansas Legislature), Lindsey Krom-Craven (Great Bend City Council), and Sara Hayden (Great Bend Economic Development, Inc.).

Volunteers who have finished their terms on the board of directors include Glenna Achatz (Coldwell Banker Sell Real Estate), Rich Baskerville (Ambassadors/ First Kansas Bank), AJ Chrest (AFLAC), Logan Garret (G-B Tires, Inc.), Jay Luerman (BCYP/ First Kansas Bank), and Teresa Powelson (Golden Belt Community Foundation).

The Chamber looks forward to recognizing the service and dedication of their retiring board members at the 100th Annual Chamber Banquet scheduled for Saturday, February 19th.

See the complete listing of Chamber Board and Staff on our website: [www.greatbend.org](http://www.greatbend.org).

## Chamber Blue of Kansas coming to Great Bend

As a member of Chambers of Commerce Executives of Kansas (CCEKS), the Great Bend Chamber of Commerce is excited to announce a partnership with Blue Cross and Blue Shield of Kansas to offer high-quality health solutions to chambers of commerce in the state of Kansas and their members.

Chamber members will be able to access affordable health insurance plans for their employees and families. With the ever-

changing health landscape, buying coverage for businesses and families has become a challenge, primarily due to changing health care legislation and affordability issues. It is through our membership with CCEKS that we will be able to offer chamber members a group health insurance plan with purchasing power, to help overcome some of these challenges, while also providing more benefit rich

plans.

This fully-funded group healthcare plan, Chamber Blue of Kansas, will start January 2023. This means the Great Bend Chamber of Commerce will be releasing details in 2022 and gathering information from eligible chamber members.

Watch your inboxes for more information coming soon in 2022. The chamber will be hosting educational sessions and webinars as we roll this out.



# Golden Belt Gives Campaign raises over \$339,000 for area non-profits

Golden Belt Community Foundation just completed its eighth Giving Tuesday campaign, wrapping up and announcing the results during a Great Bend Chamber of Commerce Coffee Thursday morning.

Giving Tuesday started as a day for anyone, anywhere to give, and it has grown into the biggest giving movement in the world. Giving Tuesday harnesses the generosity of millions of people around the world to support the causes they believe in and the communities in which they live. Celebrated on the Tuesday following U.S. Thanksgiving, Giving Tuesday inspires millions of people across the globe to show up and give back to causes and issues that matter to them.

This year over 1,000 gifts were made to support 98 local charitable organizations and endowment funds raising a total of \$339,238.53, representing an 85% increase over 2020 giving.

"This year marked GBCF's 8th year to be a Giving Tuesday partner," stated Mackenzie Mitchell, Development and Communications Coordinator, "and again this year we invited all charitable organizations in Barton, Pawnee, Rush, and Stafford counties to participate."

Tustin further explained that there were 6 new organizations participating, and that each organization chose whether to get any gifts received as a grant back to their organization – or to use the gifts to build their endowment fund at GBCF. About half of the organizations will be receiving the gifts as grants to be put to immediate use supporting a wide variety



of missions and causes.

"Today GBCF will be awarding over \$240,000 in grants," Mitchell

explained.

In addition, \$25,000 in matching funds and \$1,000 in giving incentives and drawings were awarded.

The 2021 Top Ten Giving Tuesday organizations and funds raised are:

- 1) Prince of Peace Catholic Church \$33,820
- 2) Almost Home, Inc. \$27,030
- 3) Family Crises Center \$24,485
- 4) Forever Rush County Endowment \$23,935
- 5) Barton County Emergency Aid \$19,475
- 6) Barton County Historical Society \$17,120
- 7) Prairie Godmother Fund \$14,544
- 8) Holy Family School Endowment \$9,665
- 9) GPS Kids Club Endowment \$9,560

"Thank you for your support, participation, and spreading the word about Giving Tuesday," said Tustin. "Giving Tuesday couldn't happen without you".

Year three for the Most Generous City Award, which was calculated with gift totals by zip code per capita. Olmitz received the 2021 Most Generous City award, and the foundation will make a grant of \$1,000 to an organization or project in that community.

In 2022 Giving Tuesday will be celebrated on November 29th.

For questions about Golden Belt Community Foundation or Giving Tuesday, please contact the foundation at [gbcf@goldenbeltcf.org](mailto:gbcf@goldenbeltcf.org) or (620) 792-3000.

## Outlook Business Journal

A monthly publication of the

## GREAT BEND

### CHAMBER OF COMMERCE

1125 Williams,  
Great Bend, KS 67530  
Phone: 620-792-2401  
Fax: 620-792-2404  
[www.greatbend.org](http://www.greatbend.org)

### EXECUTIVE COMMITTEE

**Chairman**  
Jerry Renk, American State Bank  
**Vice Chair**  
Shelly Peacock, TCI Answering Service  
**2nd Vice Chair**  
Rob Bauer, Bauer, Pike, Bauer, Wary & Carroll, LLC  
**Immediate Past Chair**  
Pete Wesner, CUNA Mutual Retirement Solutions  
**Treasurer**  
Michael Miller, Ronald Miller Public Accounting

### BOARD OF DIRECTORS

Jim Blackwell  
Clara Barton Medical Center  
Sue Cooper  
Barton County / Central Kansas Partnership  
Scott Dewerff  
KanEquip  
Wally Eldridge  
Eldridge Fencing  
Chuck Fellhoelter  
Peoples Bank and Trust  
Randy Goering  
Eagle Radio  
Ana Hayson  
Rana Luna Boutique  
Mike Johnson  
M and M Equipment Company  
Matt Kurtz  
Identifications  
Jessica Milsap  
MPIRE Realty Group  
Leslie Mingenback  
Miss Pretty Pickles / MyTown  
Regan Reif  
The University of Kansas Health Systems  
Douglas Reiser  
Central Kansas Surveying & Mapping Inc.  
Todd VanSlike  
Golden Belt Bicycle Company  
Chris Wagner  
Great Bend Co-op

### EX-OFFICIO

Tory Marie Amberger-Blew, Kansas State Legislature  
Lindsey Krom-Graven, Great Bend City Council  
Christina Hayes, Great Bend CVB  
Megan Hammeke, Ambassador Club/ Great Bend Recreation Commission  
Sara Hayden, Great Bend Economic Development, Inc.  
Shawn Hutchinson, Barton County Commission  
Dr. Carl Heilman, Barton Community College  
Julie Mazouch, BCYP/ Peoples Bank and Trust  
Khris Thexton, USD 428

### CHAMBER STAFF

Megan Barfield, President/CEO  
Lee Ann June, Communications & Program Coordinator  
Tayler Stegman, Office Manager



## FREE E-WASTE RECYCLING



Does your *residence* or *business* have *electronics* in need of *safe and responsible recycling*?

Computers & Monitors  
Printers  
Fax Machines  
Laptops  
Televisions  
Video Game Consoles  
DVD Players  
VCR's & Cameras  
Cell Phones  
Telephone Equipment  
...and More!

## DROP-OFF LOCATIONS

Rosewood  
Maintenance Building  
2200 Main St., Great Bend  
Mon - Fri, 9:00 am - 4:00 pm  
Rosewood Bargain Barn  
1215 Main St., Great Bend  
Mon - Fri, 10:00 am - 6:00 pm

By recycling with us, you benefit your community, the environment, and you help create jobs for individuals with developmental disabilities.

You will receive a tax deduction receipt when you drop off unwanted electronics.

Rosewood ecycle  
2200 Main St.  
Great Bend  
South of the Dairy Queen!



CONTACT INFORMATION  
(620) 603-8348  
www.RosewoodServices.com

The Mission of Rosewood ecycle is to provide work-related training and employment opportunities to adults with developmental disabilities.

# Dr. Nels is launching his new book, *The Ultimate Guide To Real-World Hiring And Firing*

This new book aims to help leaders develop an efficient and effective hiring process so the firing process happens less often and when it does, both parties are on the same page. Whether the leader is a young entrepreneur or an experienced business owner, hiring and firing well is one of the most important skills to possess.

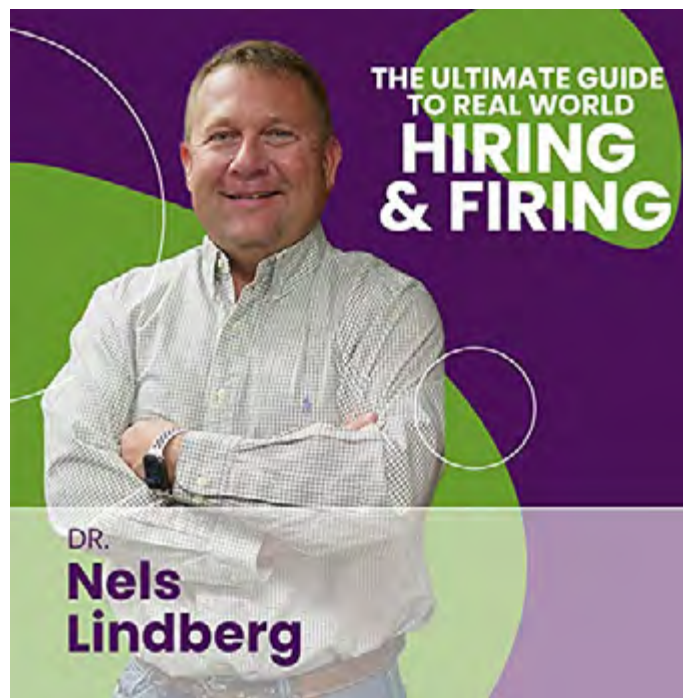
Dr. Nels highlights real-world techniques that will make a difference in any industry! He encourages leaders to take full responsibility for their mistakes and learn from them with the end goal of working to get better, do better, and be better. New employees are dependent on good leadership being self-aware.

According to Dr. Nels, "It took us 13 years to develop our hiring process (and we still fail at it from time to time). Successful hiring doesn't happen overnight but it can happen through a very intentional focus on your process, studying prior failures (both your own as well as the failures of others), achieving success in your hiring, and educating yourself on the hiring process."

The book takes readers through his personal and professional journey. It also teaches the leaders to slow down, take their time, do research, and don't skip any steps. Skipping any steps can end up being painful for any leader, organization, or potential hire.

Dr. Nels is a leadership coach, public speaker, entrepreneur, and veterinary consultant with an approach of leading from the trenches.

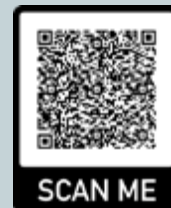
Dr. Nels offers leadership ideas delivered to your email inbox on Thursday. His down-to-earth approach to changing lives through servant leadership is inspired



greatly by Dave Ramsey's EntreLeadership program.

Contact Dr. Nels at his Website: [www.drnels.com](http://www.drnels.com).

**The Ultimate Guide To Real-World Hiring And Firing is available on:**  
Amazon (paperback, kindle, audible)



SCAN ME

Dr. Nels Website (paperback)



SCAN ME

## BARTON COUNTY IS A HIGH RISK RADON ZONE

EPA ZONE 1 - THE HIGHEST RISK



GET YOUR HOME TESTED TODAY

WE ARE PROUD TO BE A  
CERTIFIED RADON TESTING  
AND MITIGATION PROVIDER.



[www.comfortproks.com](http://www.comfortproks.com) | 1-800-937-3030

## HIGHLIGHTED EVENTS IN JANUARY

- 2...VFW Post 3111, open to the public, 504 Washington St., 11:30am
- 2...Great Bend Crest Theater Auditions for "All my Sons" 1905 Lakin, 2pm
- 4...Great Bend Reading Initiative Kick-off, USD 428
- 6...Chamber Coffee and Ribbon Cutting: Cottonwood Extension District, 3007 10th St., Program @9:30am on the Chamber's Facebook Page or You Tube Channel**
- 9...VFW Post 3111, open to the public, 504 Washington St., 11:30am
- 13...Chamber Coffee: Arby's, 3413 10th St., in Great Bend, Program @9:30am on the Chamber's Facebook Page or You Tube Channel**
- 15...Central Kansas Health & Wellness Expo, 3111 10th St., 10am
- 15...Urban Defense Dynamics Concealed Carry Class, 916 Williams, 8am
- 16...VFW Post 3111, Sunday Brunch! 9:30am, open to the public, 504 Washington St.
- 17...Martin Luther King Day!
- 17...USD 428: No School – Teacher In-Service Day
- 18...Central Kansas Partnership Meeting, 1400 Main St., 11:00am
- 18...Chamber Ribbon Cutting: Fuller Industries, 15 SW 40 Ave, Great Bend, 5pm**
- 20...Chamber Coffee: Central Kansas CASA, Holiday Inn, 3821 10th St., in Great Bend, Program @9:30am on the Chamber's Facebook Page or You Tube Channel**
- 20...Chamber Ribbon Cutting: That Hipster Place, NEW LOCATION! 1519 Main St., 10:00am**
- 23...VFW Post 3111, open to the public, 504 Washington St., 11:30am
- 27...Chamber Coffee & Ribbon Cutting: MPIRE Companies, 108 10th St., in Great Bend, Program @9:30am on the Chamber's Facebook Page or You Tube Channel**
- 29...Urban Defense Dynamics Concealed Carry Class, 916 Williams, 8am
- 30...VFW Post 3111, open to the public, 504 Washington St., 11:30am

### Recurring Events:

Great Bend City Council Meetings, 1st & 3rd Mondays, City Hall, 1209 Williams, 6:30pm

Barton County Commission Meetings, Every Tuesday, Barton County Courthouse, 1400 Main St, Rm 106, 9am. Visit [greatbend.org/events/calendar](http://greatbend.org/events/calendar) for a full list of great events taking place throughout the month!

**Virtual Chamber Events (Chamber Chat & Virtual Coffees) can be found: via Facebook ([www.facebook.com/gbcoc](http://www.facebook.com/gbcoc)) or YouTube ([tinyurl.com/ybepgrt6](http://tinyurl.com/ybepgrt6))**

**STAY INFORMED AT [GREATBEND.ORG](http://GREATBEND.ORG)**

## Growing Rural Businesses Entrepreneurial Certificate Training Offered in Great Bend

Wichita State University's Center for Entrepreneurship, in partnership with Great Bend Chamber of Commerce, Great Bend Economic Development, and the NetWork Kansas E-Community Partnership, is pleased to announce the entrepreneurial certificate program "Growing Rural Businesses" will be offered in Great Bend starting February 3, 2022. This 8-week training is custom-made to meet the needs of existing rural business



### Growing Rural Businesses

### ENTREPRENEURIAL Certificate Program

**GREAT BEND**

owners who are ready to grow their business as well as look at ways to adapt during the coronavirus pandemic. Weekly sessions will be held each Thursday from 5:30pm to 8:30pm with a light dinner being served.

Taught by faculty and

staff from Wichita State University's Center for Entrepreneurship who are experts in running businesses, this training provides hands-on, practical solutions and techniques to grow and

Continued on Page 11

## GREAT BEND CHAMBER OF COMMERCE

**WELCOME**  
to Our **NEWEST**  
Chamber Members

### DROPPING 22 INC

Melissa Ewing  
dropping22ks@gmail.com  
(620) 786-0687  
916 Williams  
Great Bend, KS 67530  
**Non-Profit**

### KANSAS BEHAVIOR SUPPORTS

Holly Creamer, Regional Director  
hcreamers@kansaskbehavior.com  
(785) 377-4744  
971 East Wichita Ave.  
Russell, KS 67665  
[www.kansaskbehavior.com](http://www.kansaskbehavior.com)  
**Health & Wellness**

### SIERRA PACIFIC MORTGAGE

Heather Miessler,  
Mortgage Loan Officer  
(620) 400-0370  
heather.miessler@spmc.com  
2015 Forest Ave  
Great Bend, KS 67530  
[www.spmc.com/heather.miessler](http://www.spmc.com/heather.miessler)  
**Mortgage Companies**

### WANT TO JOIN THE CHAMBER?

If your company is interested in joining the Great Bend Chamber of Commerce, fill out the online application on our website: [www.greatbend.org](http://www.greatbend.org). Membership is quick and easy to get started, and it is affordable, too!

**Sign up on our website:**

[www.greatbend.org/eventregistration](http://www.greatbend.org/eventregistration)





# Troy's Color Clinic

Troy Wiehl was living in Grand Island, Ne., in the late 1990s when he learned of an attractive job opening back in his old stomping grounds.

Even though Wiehl grew up in Hutchinson, he had many fond memories of living and working in Great Bend. He was eager to return.

Wiehl had worked for a paint company in Hutchinson during high school and while he attended Hutchinson Community College. Then he was assistant manager at the same paint company in Great Bend in the early 1990s.

Wiehl moved back to Great Bend in 1999 and started his new job at Ron Lamb's Color Clinic where he was manager. He bought the business, which at the time was called The Color Clinic, from Ed and Cheryl Heier in February 2017.

Today, the business at 700 Main is called Troy's Color Clinic; Wiehl and his wife, Angela, are co-owners of the business that offers paint, floor coverings and wall tile, along with a specialty in matching colors.

After leaving Great Bend, "I took kind of a hiatus," Wiehl recalled. "I was a diesel mechanic and worked in the trucking industry. Then I heard about the job in Great Bend.

"I wanted to get back here because I had met a lot of people and made some good friends. And we would rather raise our kids in Great Bend than in Grand Island. This is a great little town."

And Great Bend has been good for Wiehl's business and his customers.

For instance, while Troy's Color Clinic continues to provide PPG paint, he recently signed a contract to offer Benjamin Moore

products.

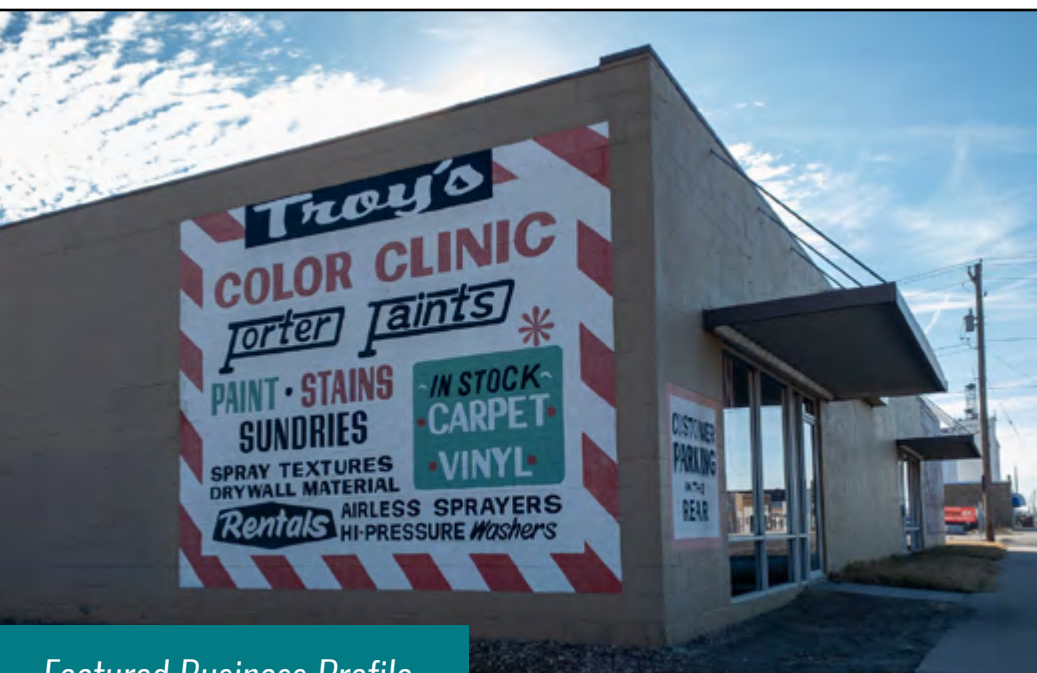
"This is really good paint; we are expanding this side of our business," Wiehl said. "This is part of our customer-service pledge. People have been asking for Benjamin Moore and now we can offer it.

"We pride ourselves on customer service. It is our biggest push here. We want to help each person to the best of our ability. We want everybody to be happy when they walk out of here.

"Maybe by adding Benjamin Moore, we can help keep more business in Great Bend instead of people having to travel for this brand," he added. "Shopping locally is always important."

To illustrate one fringe benefit of buying local, Wiehl noted that if a customer has a warranty issue with any of his products, "we will work with you and the vendor to get the problem straightened out."

On the flooring side of the business, Troy's Color Clinic can bid a turnkey operation with the professional services of local independent installers.







These installers are Doug Larson, Brian Dupuis and Dan Noblitt. "They can do it all – carpet and tile. And we are glad to be a part of helping to keep local people employed," Wiehl commented.

Carpet brands available are Mohawk, Shaw and Phenix.

Other flooring options are tile, laminate, hardwood and vinyl. Tile is even more versatile today, with the options of traditional, porcelain and products that resemble wood. Laminate comes in a wide variety of colors and styles, while traditional and exotic hardwoods are available. And the vinyl is durable and waterproof.

As a specialty, Troy's Color Clinic takes on the challenge of matching colors for its clientele.

"For example, we routinely match old woodwork," Wiehl noted. "You bring us a piece of the woodwork and we can match the stain for you, including woodwork from a 100-year-old house."

Even if a client is a do-it-yourselfer, Troy's Color Clinic is available to give advice on how to get the job done right.

"We will talk you through it," he explained. "And we have all the

paint sundries and tools you will need."

The locally owned business serves individuals, businesses and non-profit entities within a 60-mile radius of Great Bend.

Troy's Color Clinic also shows its community spirit by regularly supporting local and area projects.

"We have donated paint for many of the murals in town," Wiehl explained. "We also are here when the high schools need help with their many projects. We even have helped with the décor at a Great Bend Chamber of Commerce banquet."

Wiehl noted that David Feldbauer, store

manager, also supports Troy's Color Clinic and local programs. "David contributes his expertise to our business every day and donates his time and energy to community events. He is a long-time, valued employee who is here for our customers and our community."

Store hours are 8 a.m. to 5:30 p.m. Monday through Friday, and 8:30 a.m. to noon on Saturdays.







## Sustainable Farm and Retreat Center

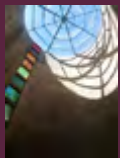
### Gift Shop

- Gifts for the alpaca-lover
- Millspun & handspun alpaca yarn
- Alpaca & other fiber accessories
- Handmade kitchen and household items
- Homemade jams & jellies
- Homemade natural skin and hair care products
- Arts and crafts

### Farm Highlights

- Alpaca herd
- Day & overnight guests/tours
- Organically-managed gardens
- Long & short term volunteers
- Educational classes
- 3 miles of walking/nature trails
- Kids' Peace Camp

Heartland Farm is a ministry of the Dominican Sisters of Peace



1049 CR 390, Pawnee Rock, KS 67567  
620-923-4585 [www.heartlandfarm-ks.org](http://www.heartlandfarm-ks.org)  
Facebook: @HeartlandFarmKS, Instagram: heartlandfarmks



Phone: **620-792-5700**

1905 19th Street in Great Bend, Kansas

## Family Practice, Behavioral Health & Dental Services

Preventative Care

Prescription Assistance

Diabetes Management

Evening Appointments

Open to Everyone

Bilingual Staff

All Insurance Accepted

Including Medicare, Medicaid & KanCare

*"We Care About Your Health"*

[www.HeartofKansas.com](http://www.HeartofKansas.com)

## New Hires & Promotions

### Health system expands women's services in Great Bend

The University of Kansas Health System is pleased to announce the addition of obstetrician and gynecologist Veerayyagari Annapurna, MD, to the care team at the Medical Pavilion at Great Bend Campus. Dr. Anna provides a full range of women's healthcare and is passionate about improving the quality of women's lives through every phase of life.

Dr. Anna practiced in Great Bend in 2018 and 2019 and is returning to Great Bend after spending the past two years in Wichita, Kansas. "I am looking forward to the family atmosphere of the community and the health system, which is what I like most about Great Bend," she said.

Comprehensive care is a particular focus of Dr. Anna's practice, beginning with a

woman's onset of menstruation through childbearing, menopause and beyond. She is board-certified by the American Board of Obstetrics and Gynecology and has more than 20 years' experience helping women with high-risk pregnancy, family planning services, infertility management, hormone replacement and more.

Dr. Anna earned her medical degree in India and completed her residency in Michigan. She will begin seeing patients Jan. 3.

Dr. Anna joins Jodi Henrikson, MD, and Sheila Hein, APRN, on our OB/GYN team at the hospital. Family medicine providers Micca Schneider, MD, and Jonathan Pike, MD, offer obstetrics care at St. Rose Medical Pavilion.

To schedule an appointment with Dr. Anna, call 620-792-2151



Dr. Annapurna

### United Way of Central Kansas Announces New Executive Director

The United Way of Central Kansas (UWCK) is excited to announce that Charell Owings will serve as the new Executive Director for UWCK. Owings is replacing Gaila Demel who is retiring at year-end.

Owings joined the UWCK team in June 2014 and has been serving the organization in various roles throughout the years, most recently as Office Coordinator. With her extensive knowledge of the organization and its community partners, Owings is well-prepared to take on the Executive Director position.

"Charell has worked closely on many United Way projects for seven years. Having witnessed her drive, determination, and organization firsthand, I look forward to seeing Charell lead the United Way of Central Kansas and know this will be a smooth transition" commented UWCK President, Becca Maxell.

Throughout her years of service to the UWCK, she has planned and organized numerous events, such as the annual kick-off. She has also assisted in the coordination of annual impact programs such as Reality U, Boxes of Love, and Stuff the Bus. Recently, Owings has also taken on many marketing and communication duties for the organization.

"I am honored that the UWCK Board of Directors entrusted me with this position. I am excited to take on a bigger role after having served the organization for the past seven years. I am confident that, as a team, we can continue to build United Way, deepen our relationships with business partners, and expand our work in fighting for the common good in our community."

Owings, resides with her husband, Jeremy, and their twin boys in Hoisington. Not only has she been a tremendous employee, but she is also an active volunteer to many agencies UWCK serves in her free time.

UWCK currently serves 22 community partners in Barton and Pawnee counties. The group's work focuses on education, financial stability and health, the building blocks for a good life and a strong community.

"I look forward to working with our community partners to ensure that our friends and neighbors have access to the services they need. I truly believe that together we can do more," commented Owings.

To learn more about UWCK, visit [www.uwck.org](http://www.uwck.org) or follow the United Way of Central Kansas on Facebook.



Charell Owings



# Strategies for Children with Autism at Home and in the Classroom

The Pilot Club of Great Bend is sponsoring a Strategies for Children with Autism at Home and in the Classroom workshop. The Pilot Club of Great Bend applied for a matching grant from Pilot International Founders Fund. Upon receiving this grant, the Pilot Club of Great Bend will match this amount to fund their workshop and bring this vital message and education to our community and the surrounding area. The workshop is scheduled for Saturday, April 9, 2022 from 8 a.m. to 4:00 p.m. at Barton Community College in Great Bend. This workshop is open to the public. Educators, professionals, caregivers, and families affected by Autism are encouraged to attend.

Pilot Club of Great Bend will celebrate World Awareness Day, by sponsoring this workshop. World Awareness Day is observed each year on April 2nd. World Autism Awareness Day was adopted by the United Nations in 2007 to shine a light on autism as a growing global health crisis. The Centers for Disease Control and Prevention estimates that one in 54 children in the United States has been diagnosed with Autism Spectrum

Disorder (ASD).

Input and support from Pilot Club of Great Bend members, Barton County Special Services, Great Bend USD 428 School District staff, Sunflower Early Education Center, plus Kansas Children's Service League - Healthy Families have supported and assisted in the planning of this workshop. The purpose of this workshop is to aid family members and professionals to cope with the daily challenges children with Autism face, plus decrease their stress and anxiety levels while improving their coping skills during educational and play activities.

This workshop on Strategies for Children



**Autism workshop committee pictured in backrow left to right: Nancy Sundahl, Amanda Staab, Barbara Watson, Dan Watson, Rhonda Knudson. Seated left to right: Betty Schneider, Janice walker, Ros Neeland, Marcia Johnson. Front Row: "Star" the Sunflower EEC facility Dog and Alyson Burkhart**

with Autism at Home and in the Classroom fulfills the mission of Pilot International. Their mission is to help those with brain related injuries and disorders, and ultimately improving their lives in the communities in which we live.

Our Keynote speaker is Beth Aune from California. Additional speakers are Jenny Halstead, Melinda McDaniel, Dr. Linda Heitzman-Powell and a panel of family members of

children with Autism.

For more information on this workshop, visit Pilot Club of Great Bend's website, [www.greatbendpilotclub.com](http://www.greatbendpilotclub.com), eventbrite.com or contact Ros Neeland, 620-786-0243.

# Reality U is coming to back to Hoisington!

Reality U brings a bit of "reality" to students through a 75-minute interactive and engaging personal finance simulation. Students imagine their life as a 26-year-old and complete an online lifestyle survey. This information is entered into trademarked software, along with their current GPA, to create a unique and individualized future scenario.

Each scenario includes the student's monthly income, credit card debt, student loan information, as well as marital and family status. Students are given a checkbook register to track their monthly purchases from the 12 booths representing services and/or products that adults typically must purchase or consider each month. The booths include: Emergency Fund and Investment, Student Loans, Utilities, Childcare, Phone & Fun, Housing, Insurance, Food, Clothes & Hair, Transportation, Unexpected Life Events, and Help! I need more money. Sometimes they must return a "purchase" and make a different decision.



The checkbook register can't fall below zero!

This event actively engages students to help them understand the importance of how their performance in school today impacts their future. It also provides the community an opportunity to share in local students' learning and developing an understanding of the world of work.

United Way of Central Kansas works with local businesses and surrounding schools to bring this event to 7 school districts in Barton & Pawnee Counties. Thanks to the sponsorship of Sunflower Bank, as well as American Family Insurance-Caleb Schultz, Cardinal Pharmacy, Cates Carquest, Clara Barton Hospital, Dairy Queen, Ehler

Chevrolet, First Kansas Bank, Landmark National Bank, Larson Engineering, MPIRE Realty, Sunflower Bank, Superior Essex, Town & Country Supermarket and Wilson State Bank. Thanks to the amazing support of the community and the partnership with USD 431, UWCK is excited to be back in Hoisington to host this impactful program.

This event is hosted on a rotating basis between the participating schools, having been held at Ellinwood and Larned over the last few years, although students from all the schools attended. Participating schools include: Central Plains, Ellinwood, Hoisington, Larned, Otis-Bison, and Pawnee Heights, and St. Joseph's.

In addition to the Reality U portion of this program, UWCK also engages with local supporters and groups to bring in breakout sessions to go in depth on specific topics. The topics range from Community Involvement, the Cost of Delinquency, to Banking 101.



# GREAT BEND

## CHAMBER OF COMMERCE

## FEATURED AMBASSADOR

*Sonya Rein*

*Edward Jones -  
Kris Sundahl, FA*



### ***What brought you to Great Bend? What keeps you here?***

My husband, JD, and I came to Great Bend more than 35 years ago due to a job change. Our two children, Ali & Thomas, were born and raised here. After attending college, they chose to settle here in Great Bend too. We love the generous, caring people of the Great Bend community.

### ***Where do you work and what do you do there?***

I am the Branch Office Administrator (BOA) for Edward Jones Financial Advisor, Kris Sundahl. Kris and I work as a team to develop a deep understanding of our client's personal values and needs. This allows us to tailor our services to what will help them reach their goals. It's my responsibility to create a consistent client experience and make it easy to do business with us.

### ***What's one thing about you that would surprise people?***

I don't know if it would surprise people, but I have a strong commitment to maintaining a healthy lifestyle. I've had a personal trainer for 10 years. Daily exercise is a must for me. Recently I have developed a practice of daily devotions and gratitude journaling.

### ***What energizes you and brings you excitement?***

I love a challenge! I like to collaborate with others to make a difference. I'm a problem solver and like to come up with ideas to improve or make things more efficient.

### ***At what job, would you be terrible?***

I have worked in a department store and retail was not a good fit for me.

### ***How long have you been a Chamber Ambassador and what do you like most about it?***

I became a Chamber Ambassador in 2017 and was the club president in 2019. I enjoy the friendships with the other Ambassadors and supporting the AMAZING Chamber staff. I also enjoy the opportunity to connect with the business community. We have seen our business grow because of the connections made as a Chamber Ambassador. Great Bend is blessed to have so many wonderful business leaders.

**About Chamber Ambassadors:** The Great Bend Chamber of Commerce Ambassador Club is made up of 30 men and women from the Great Bend business community who represent the Chamber in a number of ways. To find out how you can become a member of the Ambassador Club, contact Lee Ann June at the Chamber office, 620-792-2401, marketing@greatbend.org, or www.greatbend.org/ambassadors



## Continued from Page 5

modernize business ventures while living in a rural setting. Insights and learning tools include small group exercises, case studies, and interactive discussions with peers, facilitators, and industry experts. This popular training is offered only a few times per year on a competitive basis. More than 260 businesses across a variety of industries have benefited from this instruction. A grant to the Great Bend E-Community from NetWork Kansas will provide part of the funding for the training. Participants will have a small enrollment fee.

"We are so excited to be able to leverage our partnerships throughout the state to bring this Wichita State University program to Great Bend. As an E-Community through Network Kansas, we can combine resources delivering valuable content to our entrepreneurs," comments Megan Barfield, Great Bend Chamber of Commerce President.

Great Bend Economic

Development president, Sara Hayden, echoes Barfield saying, "Fostering entrepreneurship is an identified priority as Great Bend Economic Development looks to 2022. Over 50% of our businesses here in Barton County have been born from local entrepreneurs, and as an organization whose goal is to grow our economy, supporting these entrepreneurs is a major key to our success as a community."

All sessions are held from 5:30pm to 8:30pm on Thursdays from February 3 to March 31 (with the exception of March 17) with a program fee of \$300 per person. A \$50 Early Bird Registration Discount is available for those registering before January 21. Registration is limited to 25 students. For more information, contact Megan Barfield at 620.792.2401 or Sara Hayden at 620.617.4379.

More information and registration for the Growing Rural Businesses Entrepreneurial

PARTNERS:



Certificate Program can be found at [www.wichita.edu/grb](http://www.wichita.edu/grb).

### "Growing Rural Businesses" Sessions

- Entrepreneurial Mindset for Small Businesses • **February 3**
- Customer Discovery: The Roadmap to a Successful Marketing Plan • **February 10**
- Marketing: The Power of Telling Your Story • **February 17**
- Basic Sales Techniques and Practices for Selling • **February 24**
- Practical Legal Issues • **March 3**
- Keeping a Financial Focus • **March 10**
- Creating Value for Your Customers • **March 24**
- Bringing it All Together: Developing an Effective Niche Strategy • **March 31**

For more information about NetWork

Kansas or the E-Community Partnership, visit [www.networkkansas.com](http://www.networkkansas.com).

## Renue expands event services to include more groups

The Event Room is nothing new to Renue Salon, Spa & Fashion Boutique but the services offered are being expanded to accommodate more groups in the community.

The space that is available for rent entails the entire spa area on both the lower level and the upper Mezzanine area.

"We want to take our services up a notch or two," said Susan Williams, salon and retail coordinator. "Rather than focusing solely on gatherings associated with prom dances, baby and bridal showers, and birthday parties, we want to open it up to social groups."

These groups could include book clubs, bunco parties, sorority functions, business meetings and prayer groups.

"Actually, we are open to new ideas and would entertain anything you want to rent the space for," Williams commented. "While traditional gatherings are always important to us, we hope more local and area residents can take advantage of our facilities."

Renue has tables and chairs to accommodate 32 people but if a group wants to provide more



furnishings, the staff will coordinate with the client.

"We will do the set-up of the tables and chairs to the client's specifications," Williams said. "We clean the area after the group has removed items such as decorations and food that they have provided."

During normal business hours, the area is used for massages, facials, tanning and visits

to the infra-red sauna.

If a group is receiving multiple salon and spa services in one day, they can use the Event Room to relax and have refreshments between appointments.

"We appreciate as much notice as possible so that we can better accommodate you, your family and your friends," Williams emphasized.

The space is available any day of the week. However, the staff must coordinate with the massage therapists, cosmetologists and esthetician to ensure no interruption in the services they previously booked.

In most cases, groups supply refreshments and/or catering services. "But we work with clients to coordinate their event," Williams said.

A Renue employee is present while the event space is being used.

Renue, 1419 Main, offers all hair-care treatments; face creams; lotions; facials, waxing and other skin-care treatments; manicures and pedicures; nail polishes; body wraps; hot-stone and deep-tissue massages; two tanning beds; infrared sauna; and Event Room.



Renue Salon, Spa & Fashion Boutique encourages more social groups to use its Event Room.



**CELEBRATING OVER 55 YEARS  
OF SERVING PEOPLE WITH  
DEVELOPMENTAL DISABILITIES!**

*There is a Difference.*

EARLY EDUCATION  
CASE MANAGEMENT  
DISABILITY SUPPORTS  
RESIDENTIAL ASSISTANCE  
COMMUNITY EMPLOYMENT  
RECYCLING & MANUFACTURING  
GENERAL PUBLIC TRANSPORTATION  
& MUCH MORE!

**620-792-1325**  
**WWW.SUNFLOWERDIV.COM**

## **Hutchinson Clinic Physicians Serving the Great Bend, Hoisington & Ellinwood Areas**

### **GREAT BEND:**

Hutchinson Clinic Great Bend / 3715 6th Street  
Dr. Jamil Ahmed, Cardiologist  
Dr. Aaron Thiessen, Ear Nose & Throat  
Dr. Curt Thompson, Interventional Radiologist  
Natalie Williams, PA, Pulmonology

### **ELLINWOOD:**

Ellinwood Medical Clinic / 611 N. Main  
Dr. Jamil Ahmed, Cardiologist

### **HOISINGTON:**

Clara Barton Medical Clinic / 250 W 9th St  
Dr. Costy Mattar, Cardiologist  
Dr. Christine Sanders, OBGYN  
Dr. Curt Thompson, Interventional Radiologist

*Exceptional Care Close to Home*



**Call for an appointment: 620-669-2500**  
**www.hutchclinic.com**

# **CHAMBER COFFEE SCHEDULE**

**Every Thursday | Doors Open at 9am | Program at 9:30am**

Tune in on Facebook or YouTube for Virtual Coffees

**January 6, 2022**

**K-STATE RESEARCH & EXT. - COTTONWOOD DISTRICT**

**3007 10th Street in Great Bend**

K-State Research & Extension has a presence in all 105 counties in Kansas for over 100 years. The Cottonwood Extension District, which joined the Barton and Ellis County programs is in its fifth year of providing unbiased, research based information for residents of Central Kansas. Extension programming related to agriculture and natural resources, family and community wellness, 4-H and youth development, and community vitality is what they do best. Their team members would love to meet you and provide lifelong learning opportunities.

**January 13, 2022**

**ARBY'S**

**3413 10th Street in Great Bend**

Arby's has been committed to serving the Great Bend area for the last several decades. They strive to be the Premier destination with a large choice of sandwiches and great sides and beverages. They also recently improved their look so Great bend can be seen as the best choice to visit and to have fun in all of Kansas.

**January 20, 2022**

**CENTRAL KANSAS CASA**

**3821 10th Street in Great Bend**

The mission of Central Kansas CASA, Inc. is to serve as an advocate for abused and neglected children by providing a pool of trained caring volunteers who speak for the best interest of a child until a safe, loving, and permanent home is found.

**January 27, 2022**

**MPIRE COMPANIES**

**108 10th Street in Great Bend**

The MPIRE leasing and management team offers a variety of single-family and rental apartment homes throughout Kansas. They manage safe, comfortable housing solutions for budget-conscious individuals, as well as people looking for high-end family homes. Their portfolio includes a variety of well-maintained and updated homes with modern amenities. They treat every client with the utmost respect and professional courtesy. MPIRE Improvements & Overhead Door division specializes in interior and exterior remodeling services in Central & Western Kansas. They are a Pella Certified Contractor with a variety of residential & commercial window and door products, as well as providing quality garage door and commercial overhead door sales, repair and service. Superior Self Storage - Their professional full time staff is here to meet your storage unit needs. They offer units ranging from 10 x 5 to 42 x 60, and most recently began offering RV & Boat storage at the new location, 106 10th Street. They are committed to offering the best value by providing a superior service experience. Security, convenience, and cost effective storage solutions are their top priorities. Their website is easy to use and has all the features for a rich interactive experience, making renting storage units easy and hassle free!

**February 3, 2022**

**AMBASSADORS CLUB**

**Location TBD**

Ambassador Club members assist the Chamber with networking events, ribbon cuttings, ground breakings, and membership recruitment and retention. This group of volunteers allows the Chamber to cultivate business relationships and network with the area's most successful people.



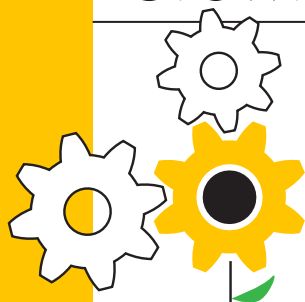
3307 10th Street • Great Bend, KS 67530

**McDonald's**

is providing coffee for Chamber of Commerce coffees.



# Growing Rural Businesses



## ENTREPRENEURIAL Certificate Program

### GREAT BEND

Growing Rural Businesses is an 8-week certificate program taught by Wichita State University's Center for Entrepreneurship experts custom-made to meet the needs of existing rural business owners who are ready to grow.

Participants receive comprehensive, practical instruction in the finer points of growing a thriving rural business in a dynamic collaborative environment where they network with peers. All classes are taught in-person by WSU's Center for Entrepreneurship who are experts in running businesses. Facilitated group discussions provide insights about business challenges and strategies to solve them effectively.

**Thursdays,  
Feb. 3 – March 31  
5:30 to 8:30 p.m.**

**\$300** for all 8 sessions

Great Bend Events Center  
Santa Fe Trail Conference Room  
3111 10th Street  
Great Bend, KS

Early Bird Discount  
**Save \$50**  
Register by Jan. 21

## Great Bend Entrepreneurial Training Seminar Line-up

- 1. Entrepreneurial Mindset for Small Businesses • February 3**  
Assessing your entrepreneurial spirit; building a business concept statement and vision.
- 2. Customer Discovery: The Roadmap to a Successful Marketing Plan • February 10**  
Applying market research/market segmentation.
- 3. Marketing: The Power of Telling Your Story • February 17**  
How this drives success on Google resulting in profitable customer action.
- 4. Basic Sales Techniques and Practices for Selling • February 24**  
Selling the concept and the keys of making a sale, identifying a potential customer.
- 5. Creating Value for Your Customers • March 3**  
Customer service/consumer behavior, exceeding customer needs before, during and after.
- 6. Practical Legal Issues • March 10**  
Improving vendor relationships, negotiations, and contracts for positive (win/win) outcomes.
- 7. Keeping a Financial Focus • March 24**  
Monitoring critical numbers and financial control systems of your business.
- 8. Bringing it All Together: Developing an Effective Niche Strategy • March 31**  
Competitive advantage in the marketplace.

#### Contact:

**Sara Hayden**

Great Bend Economic Development  
director@gbedinc.com

**620-796-2407**

or

**Megan Barfield**

Great Bend Chamber of Commerce  
mbarfield@greatbend.org

**620-792-2401**

**Enrollment  
is limited.  
Register  
online ►**



#### PARTNERS:





**3111 10th Street**  
Great Bend, KS Barton County

# MENTORS



**COMMUNITY  
MENTORS  
WANTED**



**CALLING ALL BARTON  
COUNTY BUSINESS  
PROFESSIONALS!**



Volunteer to help high school students compete as entrepreneurs!



Mentoring on a specific topic makes your time commitment minimal!



Create connections with the next generation of workforce!

## BARTON COUNTY YEC

**YOUTH ENTREPRENEURSHIP  
CHALLENGE**



**2022, MARCH 8TH**  
Wednesday, 11 AM - 2 PM  
@ Great Bend Events Center

**Contact:**

Sara Hayden  
[director@gbedinc.com](mailto:director@gbedinc.com)

Megan Barfield  
[mbarfield@greatbend.org](mailto:mbarfield@greatbend.org)



**More Information at:**

[www.gbedinc.com/youth-entrepreneurship-challenge-ye](http://www.gbedinc.com/youth-entrepreneurship-challenge-ye)





# 100<sup>th</sup> Great Bend CHAMBER of COMMERCE

Banquet and Annual Meeting  
**February 19, 2022**

Great Bend Events Center

6 pm Live Music & Cocktail Hour

7 pm Dinner & Awards

PLUS! Keynote Speaker, Dr. Nels Lindberg & special guest, Nash Lindberg

NextGen Leader of the Year · Citizen of the Year · Business of the Year · Legacy Award



Join us for the Chamber's  
100th Banquet & Annual Meeting

## Community Champion Table: \$650

Show your support for your business community and let people know your business is present for the 100th Annual Banquet! Reserved Table for 8 includes logo recognition at the event on both screens and in the printed program. Add 2 to your table for an additional \$110.

## Table for 8: \$440

Includes 3-Course Meal, Cash Bar, Networking Galore! For a table of 10 add \$110.

## Individual : \$55

Includes 3-Course Meal, Cash Bar, Networking Galore!

Register by February 9th  
on [GreatBend.org](http://GreatBend.org) or Call (620) 792-2401



SCAN ME

## Presented By:

**BARTON**  
COMMUNITY COLLEGE



CLARA BARTON  
Hospital & Clinics

**SPECTRUM**  
CPA Partners, LLC

Thank you for supporting our mission and allowing us  
to serve the business community in our 100th year and beyond!



Watch your mailbox & inbox  
for your invitation! We hope  
you will join us for our 100th  
Celebration of the Chamber  
and Business Community.

Interested in Sponsorship Opportunities?

Contact: Lee Ann June: [marketing@greatbend.org](mailto:marketing@greatbend.org) or 620-792-2401.

CHECK OUT THE LATEST NEWS FROM THE GREAT BEND CHAMBER BUSINESS COMMUNITY!

# OUTLOOK

**GREAT BEND**  
CHAMBER OF COMMERCE

A MONTHLY PUBLICATION OF THE  
GREAT BEND CHAMBER OF COMMERCE

business journal

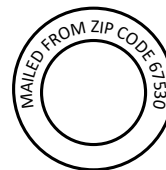
1 9 2 1



2 0 2 1

Great Bend Chamber of Commerce  
1125 Williams Street  
Great Bend, KS 67530

- RETURN SERVICE REQUESTED -



PRESRT STD  
U.S. POSTAGE  
PAID  
PERMIT NO. 4

**GREAT BEND**  
CHAMBER OF COMMERCE

December 13 - 17

## Member Appreciation Days

NOT A MEMBER? JOIN THIS WEEK!

### 🍯 All Week:

Pick up 2022 Member Signage  
Register for Prizes (one entry per day)  
Enjoy Mimosas, Hot Cocoa Bar, Coffee & Treats

### 🍯 Wednesday, Dec. 15

Learn more about the Member Information  
Center (MIC) with this FREE Training, 10am

### 🍯 Thursday, Dec. 16

Chamber Office is open until 6pm

### 🍯 Friday, Dec. 17

SHOP LOCAL & WIN!

3pm Facebook LIVE announcing Winners from  
the week and Shop Local & Win Campaign