

MAY 2018 • VOLUME 97 NO. 5

OUTLOOK BUSINESS JOURNAL

A MONTHLY PUBLICATION OF THE GREAT BEND CHAMBER OF COMMERCE AND ECONOMIC DEVELOPMENT

BCYP CELEBRATES A SEASON OF IMPACT BARTON COUNTY YOUNG PROFESSIONALS MEMBERS MAKING A DIFFERENCE

2018 has ushered in a season of service and community impact for Barton County Young Professionals (BCYP). Striving to fulfill the three program objectives of **“LEAD. NETWORK. VOLUNTEER.”**, recent BCYP events have provided opportunities for its members to make a positive impact where they live.

Flatlander Half Marathon

The Flatlander Half Marathon, which started as a grassroots effort in 2015 to promote healthy and active lifestyles in the community, has quickly become a popular well-attended race with a regional draw and significant local impact. The event now features a certified half marathon course and 5k and 10k options.

The first race paid for 20 bike racks installed in Hoisington, Ellinwood, Claflin & Great Bend. Proceeds from 2016 and 2017 races were combined to maximize impact and a check for \$7,400 was presented to Be Well Barton County in April. With May being national Bike Safety Month, BCYP is proud to provide funds to Be Well Barton County with the intended projects of solar-powered speed limit signs at key crosswalks, school zones and community entry points across Barton County.

“The health and wellness of our community is supported by infrastructure and safety measures,” said Brandon Steinert, Chair of the Flatlander Committee. “Safe crosswalks, marked bike and pedestrian paths and other amenities are key elements needed to accomplish our mission to get people outdoors and moving.”

The 4th Annual Flatlander Half Marathon is scheduled for Saturday, October 20, 2018 in Downtown Great Bend.

Charity Supply Drive

The 6th Annual Charity Supply Drive, presented in partnership with the Great Bend Rotary Club, saw nearly 40 volunteers collecting donations at Walmart and both Dillons locations in Great Bend on March 24th. The event collected over 2,400 lbs of food for the Barton County Food Bank and a mountain of supplies for Catholic Charities Non-Food Pantry. “This is the largest single donation we’ve ever received,” Rebecca Ford, Catholic Charities said.



ABOVE - Members of BCYP Committees present a check to Be Well Barton County with proceeds from their half marathon event.



LEFT - BCYP & Rotary Club members volunteer during the Supply Drive in March.

DON'T
LET
YOUR
PRIVACY
BE
DELETED

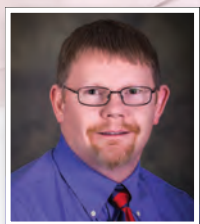
GET YOUR
FREE
CYBERSECURITY
ASSESSMENT

877-625-7872

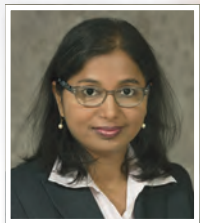
nex-tech.com/business



MEET OUR OB DOCTORS AT HEARTLAND REGIONAL HEALTH CLINIC



Dr. Jodi Henrikson



Dr. V. Annapurna

Drs. Annapurna and Henrikson are currently accepting new OB patients as well as patients needing well woman exams or experiencing other gynecological issues.



Heartland
Regional Health Clinic

Obstetrics/Gynecology
620-792-2151

Great Bend
REGIONAL HOSPITAL
A Physician Owned Hospital



514 Cleveland Street | Great Bend, Kansas | www.gbregional.com

- Story Continued from Page 1



BARTON COUNTY
Young Professionals
LEAD. NETWORK. VOLUNTEER.

Kindergarten Literacy Kit Assembly

As kiddos head to Kindergarten Round-Ups across Barton County, BCYP was proud to provide the manpower to assemble the literacy kits they will receive. A project of the United Way of Central Kansas, the kits contain flashcards, worksheets, a book and other supplies to assist with school readiness and encourage parents to get involved.

Summer Pop-Up Events Planned

In addition to the regularly scheduled Networking Mixers and family events, BCYP will host a variety of "pop-up" events this summer. "We want to help our members make connections, it's as simple as that" said Megan Hammeke, 2018 BCYP Chair, "by simplifying events and offering casual 'pop-up' opportunities to volunteer, dine-out, or even enjoy yard games at the park, we can't wait to help our members meet new people and grow roots in our community." The first "pop-up" event will be a Born Learning Trail Refresh scheduled for the evening of May 24th. BCYP members will help ready the Great Bend Zoo for the summer season and then head over to Pizza Hut for dinner following.



About BCYP:

BCYP exists to provide leadership, networking & volunteer opportunities. BCYP is a free membership organization for anyone 21-40ish who lives or works in the Barton County area. Over 750 individuals currently participate in BCYP membership. To learn more about the benefits of membership or to see an event schedule, visit www.BartonYP.com, Find BCYP on Facebook, or call the Great Bend Chamber of Commerce & Economic Development at 620-792-2401.

Benefit Management Expands in New Facility

Benefit Management, LLC recently welcomed us for a Ribbon Cutting to commemorate their recent expansion onto Main Street. Once purchasing the building at 16th and Main St., construction quickly ensued to transform the space into a modern office space, equipped with state-of-the-art equipment and room for future growth within the company. This locally-born company employs approximately 120 people. Benefit Management, LLC. is a community of professionals who are dedicated to caring for the needs of healthcare customers and providing face-to-face service that fosters and maintains teamwork and accountability.



First Christian Church Creates “The Refuge” Service

On March 29th, we helped First Christian Church, located at 5230 Broadway, celebrate their new worship service offering. After a survey on Great Bend found that over 8,000 people had no church home, leaders of the church came together to create “The Refuge.” Their goal is to reach out to all of those people and invite them in to this new style of church service.

Senior Minister, Rev. Joshua Leu says, “This is a place where everyone is welcome. There’s a free coffee bar, casual dress, a 45 minute service, childcare, all while today’s contemporary Christian music is performed, in a very relaxing atmosphere.”

“We just want people to find a place where they can get to know Jesus. We are a congregation of ordinary people living extraordinary lives for Christ,” Leu continues.

You’re invited to experience “The Refuge” yourself on Sunday mornings at 11:00 a.m., 5230 Broadway Ave., Great Bend. Learn more at www.fccgbk.com or find them on Facebook.



Time Management Expert Launches New Company

Sonya Rein, former owner of 2B Organized, recently announced that she would be rebranding her business. Her new company is called Errand Lady, and will specialize in personal shopping and errands, as well as senior services and home away services.

“I am excited about this new venture! I see a huge need for busy families, working professionals, and senior citizens to have help with their chores and errands,” Rein says. “Everything I do is geared toward the goal of giving my clients BACK their time so they can focus more on what is really important.”

Rein has been offering these services in the Great Bend area for almost three years, and has built a loyal following with small businesses, busy families, seniors, caregivers, and more.

“Errand Lady more than pays for herself in the time I save and the money I save by not buying items I didn’t really need,” says one of Sonya’s customers “I don’t know how many times I’ve gone into the store for a few items and left spending way more than I intended to. She keeps us on budget and on our diet.”

Errand Lady will offer everything from personal shopping and errands to business concierge services and senior support. “Everyone deserves to have a life with less stress. My services can make that happen,” Rein says. For more information, visit www.errandlady.net or call Sonya Rein at 620-617-8195. You can also find Errand Lady on Facebook.



Morgan Hawkins Hired As CUA Assistant Manager

Credit Union of America welcomes new hire Morgan Hawkins, as Assistant Branch Manager at CUA’s Great Bend office. Hawkins brings 4.5 years of banking experience to CUA, received her bachelor’s degree from the University of Kansas, and will receive her MBA in May 2018 from Friends University. CUA serves over 66,000 members online and at thirteen (13) full service locations. CUA is a member owned and operated full service financial cooperative providing low-cost checking, savings, investments, personal and mortgage loans, and business services.



Outlook Business Journal

A monthly publication of the

GREAT BEND
CHAMBER OF COMMERCE
& ECONOMIC DEVELOPMENT

1125 Williams,
Great Bend, KS 67530
Phone: 620-792-2401
Fax: 620-792-2404

Web address: www.greatbend.org

EXECUTIVE COMMITTEE

Chairman

Taylor Calcara, Watkins Calcara Chtd.

Vice Chairman

AJ Chrest, Aflac District Coordinator

2nd Vice Chairman

Brandon Lawellin, Sutherlands

Immediate Past Chairman

Paul Snapp, First Kansas Bank

Treasurer

Taylor Dirks, Adams Brown Beran & Ball

BOARD OF DIRECTORS

Aaron Andrews

MPIRE Realty Group

Todd Armatys

Edward Jones Investments

Cindy Brooke

Heartland Taxes / Ambassador Club

Austin Cohan

Adams Brown Beran & Ball / Young Professionals

Gaila Demel

Unitited Way of Central Kansas

Rebecca Ford

Catholic Charities of Southwest Kansas

Casey Harbour

Watco Companies

Diann Henderson

Great Bend Recreation Commission

Teresa Mazouch

Wheatland Electric Cooperative

Dr. Scie Murray

Murray Chiropractic Center

Jon Prescott

Sunflower Diversified Services

Lacey Schofield

Best Western Angus Inn

Julie Spray

The Fieldhouse

Nancy Sundahl

Mary Kay Cosmetics

Rick Taylor

Nex-Tech

Pete Wesner

CUNA Mutual Retirement Solutions

EX-OFFICIO

Vicki Berryman, Great Bend City Council

Christina Hayes, Great Bend CVB

Jennifer Schartz, Barton County Commission

Dr. Carl Heilman, Barton Community College

Khris Thexton, USD #428

CHAMBER STAFF

Jan Peters, President/CEO
jpeters@greatbend.org

Andrea Bauer, Director of Business Development
abauer@greatbend.org

Megan Barfield, Member Relations Coordinator
mbarfield@greatbend.org

Kim Wiens, Business Manager
kwiens@greatbend.org



"You Can Have it Maid!"

Commercial & Residential
Cleaning by Trained & Insured
Professionals

PICK YOUR PLAN
(3 to Choose From)

PICK YOUR SCHEDULE
(Weekly or Biweekly)

Call Today: 620-805-3095

www.HaveItMaidCleaningService.com

FREE

AIR CONDITIONING SERVICE
WHEN YOU **SIGN UP** FOR OUR

PLATINUM PLUS

SERVICE PLAN

Comfort Pro Inc.

10% OFF ALL PARTS
PRIORITY ATTENTION
FREE SALT DELIVERY
2 VISITS PER YEAR
FREON CHECKS
AND MORE

(800) 937-3030

Payouts Provided to Charities with Endowments

When Christy Tustin was sending out checks recently, she started wondering if the community realizes the power of endowment funds for local and area charities. As executive director of the Golden Belt Community Foundation (GBCF), Tustin and the board of directors determine amounts available for payout every year.

Most recently, \$98,163 was available to be paid to organizations. "While a majority choose to receive their endowment-payout check right away, others choose to leave the money in the fund so it will grow even faster," Tustin said. "The decision is entirely in the hands of each organization. If they choose to receive a check, there are no restrictions. The money can be spent on whatever they determine is in the best interest of the people they serve."

An endowment is a permanent fund created for the benefit of an organization. While the principal grows over time, interest earnings are available to the organization annually. "This is a strategy that works," Tustin said. "These endowed funds increase annually to help guarantee the long life of the organizations."

Agencies with endowments do not have to apply for the money or write a grant. It is automatic each year. Payout amounts are based on several factors. These include: the amount of the fund; the financial market; and the spending rate set by the GBCF Board of Directors.

Giving Tuesday has become a major factor because of matching funds from sponsors that allow endowments to grow even more.

GBCF staff is always available for questions, as well as educational materials and workshops. At nearly \$23 million in total assets and more than 180 funds under management, the Golden Belt Community Foundation has been connecting people who care to causes that matter since 1996. GBCF serves the counties of Barton, Pawnee, Rush, and Stafford. For more information about Golden Belt Community Foundation, call (620) 792-3000 or visit their website at www.goldenbeltcf.org.



Loomis, New R.N. at Sunflower Diversified Services

When Brandy Loomis started her new job recently at Sunflower Diversified Services, she was excited to become reacquainted with some familiar faces. Loomis is the new full-time registered nurse at Sunflower, a non-profit agency that serves people with intellectual delays and disabilities.

In her new job as head of the Medical Services Department, Loomis oversees all medical services; ensures appointments are made at a variety of doctor, dental and optometry offices; and arranges for mental-health care. In addition, Loomis oversees medication management and provides staff training in that area. She also offers a staff course that concentrates on healthy living.

At any given time, approximately 70 adult Sunflower clients rely on the agency's medical services. Loomis' staff includes a medical support manager and two medical support specialists.

Loomis is a 2000 graduate of Great Bend High School and earned an associate's degree in nursing from Barton Community College. She is planning to pursue a bachelor's in nursing. Her background includes clinical and mental-health nursing. Previously, Brandi Demel was the full-time RN at Sunflower; now she is director of case management. Sunflower serves infants, toddlers and adults in Barton, Pawnee, Rice, Rush and Stafford counties. It is in its 52nd year.



HIGHLIGHTED EVENTS IN MAY

- 3... Chamber Coffee: Marketing Maven Consulting, 2817 9th St @9a.m.
- 3... Ribbon Cutting: Just In Time Remodeling, 2817 9th St @10a.m.
- 4... Art & Wine Walk, Downtown Great Bend @5p.m.
- 5... Cinco de Mayo Festival, Downtown Great Bend, Parade @ 11a.m., continuing all day
- 5... Wild Goose Chase 3k/5k Fun Run, Kansas Wetlands Education Center, 592 NE K-156 Hwy @9a.m.
- 6... 30th Annual Mid-American Mopar Car Show, Brit Spaugh Park, NE corner @9a.m.
- 8... Dine for Dolly, Freddy's Frozen Custard, 3008 10th St, all day
- 8... Foster Care Challenge Forum, Great Bend Public Library, 1409 Williams St @6:30p.m.
- 10... Chamber Coffee: Sunflower Bank, 3600 10th St @9a.m.
- 10... Ribbon Cutting: The HR Pro, 2817 9th St @10a.m.
- 11... Barton Community College - 48th Annual Commencement, Barton Gym @7p.m.
- 13... Unity Worship & Graduate Tribute, First United Methodist Church, 2123 Forest @10:30am
- 14... Touched by Cancer Support Group, Heartland Cancer Center, 204 Cleveland @4p.m.
- 15... Employer Roundtable: Employment Policy Essentials, The Page @11:30a.m.
- 17... Chamber Coffee & Ribbon Cutting: MPIRE Realty Group, 3520 Lakin Ave @9a.m.
- 19... Central Kansas Photography Club Seminar, Kansas Wetlands Education Center, 592 NE K-156 @9a.m.
- 20... Great Bend High School Graduation, 2027 Morton St @5p.m.
- 21... Barton County Historical Society Monthly Meeting, 85 US Hwy 281 @7p.m.
- 22... 5th Annual Mental Health Awareness Day, 5815 Broadway Ave @2p.m.
- 24... Chamber Coffee: The Center for Counseling & Consultation, 1225 Patton Rd @9a.m.
- 24... Barton County Young Professionals Pop-Up Service Project, Great Bend Zoo @5:30p.m.
- 28... Memorial Day - Chamber Office Closed
- 29... Quickbooks Basics Seminar, Spectrum CPA, 1400 Polk St @9a.m.
- 31... Chamber Coffee: Kentucky Fried Chicken, 2917 10th St @9m.
- 31... Ribbon Cutting: Grand Opening of Expanded Grizzly Bear Exhibit @10a.m.

RECURRING EVENTS:

Great Bend City Council Meetings, 1st & 3rd Mondays, City Hall, 1209 Williams St @7:30pm

Barton County Commission Meetings, Every Monday, Barton County Courthouse, 1400 Main St, Rm 106 @9:00am

Pawnee County Hospital Campaign a Success

PVCH Foundation held their annual Associate Campaign to help raise money for the Foundation. The 120 employees of Pawnee Valley Community Hospital were given the opportunity to donate via payroll deduction to give back and advance healthcare in the community. The theme this year was "Get your Game On."

The week started with a kickoff on Monday, Jeopardy on Tuesday, Minute to Win It on Thursday and ended with Family Feud. The event helped raised \$4,200 and has a 38% payroll giving rate, with the National average 23%.

"Pawnee Valley Community Hospital staff is committed to help the Foundation succeed and their generosity is reflected by that," says Julie Bugner-Smith, Foundation Development Coordinator.

The following associates volunteered their time to help with the campaign: Kortney Traylor, Kimi Bowman, Kathy Weaver, DeAnn Baker, John Wasinger, Katie Knieling and Karen McDade. Also special thanks to Shawn Harding who was our master of ceremonies and the PVCH Trustees, Suzan Haynes, Kyle Beckwith and Meribeth Busenbark who participated and are vital to the Foundation.



Comfort Pro Earns Silver Shield Award

Comfort Pro, the fastest growing contractor for plumbing, heating and air conditioning, and water treatment in Central Kansas was recently recognized with several awards from Comfort Products Distributing for sales and service excellence.

These awards included Dealer of the Year, Commercial Dealer of the Year, and the Silver Shield Award which recognizes retailers for exceeding sales goals. For 2017, Comfort Pro was the top Bryant dealer in the region.

"We are incredibly honored and humbled to receive these awards," owner, Barry Stalcup said. "At Comfort Pro, we pride ourselves on offering the very best quality products and services to our customers. This award shows that our customers agree that Bryant is the best on the market."

Comfort Pro has sold Bryant furnace and air conditioning systems since 2008. They have locations in Great Bend, Larned and Russell with 25 vans serving all of Central Kansas.

Learn more about Comfort Pro on their website at www.comfortproks.com and follow them on Facebook.





A Trusted Benefits Partner for All Types of Employers

A few years back, AJ Chrest left her job in pursuit of a new career path that would allow her to help others while maintaining her personal ethical standards. Turns out, she found something she didn't even know she was looking for. Chrest is now district coordinator for Aflac, 2205 Washington; she joined the company four years ago and has been in the coordinator position for 2-and-a-half years.

"I went to what I considered to be a practice job interview. I didn't really think it was the job for me," she acknowledged. "But then I learned about Aflac's unwavering ethics. This is literally what attracted me to the company and I have never regretted the decision. It was a God thing."

Chrest isn't the only one to sing the praises of Aflac's ethics. It is among the Top 100 World's Most Ethical Companies and has appeared on Ethisphere's list every year since the recognition began in 2007. Aflac is the only insurance company to earn this long-term recognition.

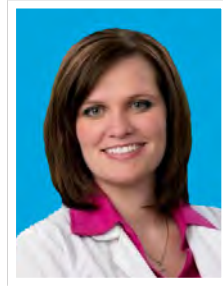
This is why Aflac's clients can count on fairness and expediency from all its agents, noted Chrest, a Great Bend High School graduate. "This is another unique thing," she said. "Each of the eight local agents in our nine-county service area is independent. I help these independent agents achieve their goals in areas such as customer service and training. Thanks to them, our growth has doubled in the last few years."

Many people may not realize that Aflac agents do NOT offer property and casualty coverage or major medical insurance. "However, we supplement major medical. You may already offer your employees medical insurance but they incur out-of-pocket expenses that aren't covered. Aflac provides cash benefits to help with unexpected medical and daily living expenses."

Chrest also emphasized that while Aflac does offer some individual policies, in a large majority of cases, "our agents are business partners with business owners. We help businesses with strategies for employee benefits and offer advice about retention and staying competitive. And we rely on face-to-face interaction as much as possible."

"In addition," she continued, "we have partnerships with other insurance carriers to ensure we bring the appropriate strategy to a particular business."

Aflac agents are "the front line for our policyholders," Chrest added. "If we had a bunch of hoops to jump through or a lot of fine print to decipher, it would make our jobs miserable. But the great thing is, Aflac wants to pay its customers and the company has an easy process to do so. Payment is usually the next day."



Because of this philosophy, Aflac has gained the trust of more than 50 million people worldwide and is the number-one supplement insurance company. Locally, the district office meets, and exceeds, standards.

And now for the Aflac Duck – the spokesquacker that resulted from a "daring advertising campaign." Chrest has heard many stories about how the Aflac Duck was born but the real story is this. "An advertising team was sitting around a table. Someone at that table kept repeating 'Aflac, Aflac, Aflac ...' Then someone else said 'you sound like a duck.'"

And by the way, Aflac stands for American Family Life ASSURANCE Company. The local office on Washington has been here for 17 years but Aflac has had a presence in the community for at least 25 years.

There are three other local locations, including home offices. Chrest can point customers in the right direction; her number is 620-639-5283.

Three brothers founded the company in 1955 and went on to invent cancer coverage; Aflac's contributions to childhood cancer research and treatment exceed \$100 million. The company established the Aflac Cancer and Blood Disorders Center at Children's Healthcare of Atlanta.

This, Chrest said, is just one illustration of Aflac's commitment to corporate social responsibility. The company is "committed to earning your respect through our actions."

Locally, Aflac representatives support a number of organizations such as the Family Crisis Center, Central Kansas CASA, Barton County Young Professionals, Chamber of Commerce, Camp Hope Heartland, Golden Belt Humane Society and others.

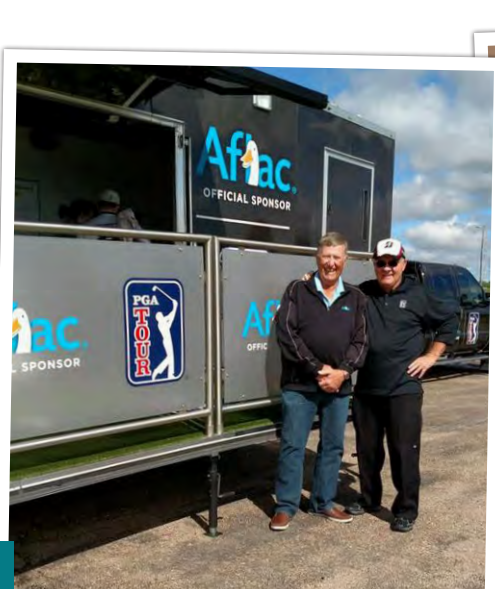
Chrest looks back on her entry into the Aflac Way and recalls that this type of community service and spirit is common in Great Bend.

"When I made the sudden decision to change career paths, I received support from many local business owners. They also support our independent agents and their community. It is actually hard to put into words. But the business community here wants to see another person succeed."

"In our position of working with companies," she continued, "we see the business climate up close. We all know it hasn't been exceptional in recent years. However, local business owners are optimists – real glass-half-full kind of people. And they are business savvy too. They understand business cycles and look to the future."

58% of employees say they're at least somewhat likely to take a job with slightly lower pay but a more robust benefits package.

#1 provider of voluntary employee benefits in the U.S.



Featured Business Profile

Featured Business Profile

MEET OUR VETS

Dr. Ty Brunswig

Expert in Bovine Reproduction

2nd Generation Veterinarian

Played FHSU Football & Chosen for Shrine Bowl



622 McKinley in Great Bend (620) 792-1265



Phone: **620-792-5700**

1905 19th Street in Great Bend, Kansas

Family Practice & Mental Health Services

Preventative Care

Prescription Assistance

Diabetes Management

Evening Appointments

Open to Everyone

Bilingual Staff

All Insurance Accepted

Including Medicare, Medicaid & KanCare

"We Care About Your Health"

www.HeartofKansas.com

Spine Surgeon Starts Seeing Patients at St. Rose

When a patient visits Max De Carvalho, M.D., at the St. Rose/HaysMed Specialty Clinic, two topics are likely to be part of the conversation. These topics are "realistic expectations" and "quality of life." Dr. De Carvalho, spine surgeon, is the newest addition to the Specialty Clinic. His home base is Hays Orthopedic Institute at Hays Medical Center; he sees patients at St. Rose on the second Wednesday of the month.



If someone suffers from back pain, they don't necessarily have to live with it," Dr. De Carvalho said. "If you want less pain, better mobility and balance, and the ability to perform regular activities, we can often help with that."

"You might believe you can have the same results that knee or hip replacements provide," Dr. De Carvalho said. "But the spine is different. We don't replace the spine. In addition to procedures, we offer education and physical and occupational therapies to improve quality of life."

While surgeries are performed at HaysMed, most pre-operative and post-operative visits are at St. Rose, which is part of The University of Kansas Health System. Cortisone injections also are available here. Surgical procedures involve decompression, herniated discs, fusion for deformation and other conditions. Some surgeries are minimally invasive. Those with questions should ask primary care physicians for a referral to a specialist.

Dr. De Carvalho received his medical degree from the Federal University of Sergipe, Brazil. He completed his orthopedic residency at the National Institute of Trauma and Orthopedics in Rio de Janeiro, and fellowships in spine surgery at the Klinikum Karlsbad Langensteinbach in Germany, as well as a minimally invasive spine surgery fellowship at Wooridul Spine Hospital in South Korea.

Dr. De Carvalho completed advanced fellowship training in Orthopedics Trauma at New Mexico University in Albuquerque; spine surgery at Twin Cities Spine Center in Minneapolis; and pediatric orthopedics at the Cincinnati Children's Hospital.

In addition, he has conducted research in Brazil and the United States, and has published extensively in orthopedic books and journals. He is fluent in English, Spanish, German and Portuguese. His partners at Hays Orthopedic Institute are Dr. Gulraiz Cheema, Dr. Timothy Wright and Dr. Wally Walstrom.

St. Rose Health Center specializes in primary care, prevention and wellness. Services include St. Rose Family Medicine, Convenient Care Walk-in Clinic, Great Bend Internists, Imaging, Cardiac Rehab, Physical Therapy, Golden Belt Home Health & Hospice and a comprehensive Specialty Clinic. Hays Medical Center, which is part of The University of Kansas Health System, is the sole owner of St. Rose.

St. Francis to Host TIPS-MAPP Training Class

Saint Francis Community Services will have a TIPS-MAPP training Class which is a pre-service training for potential adoptive and foster parents prior to becoming licensed by the state. It helps families make informed decision about becoming a resource family.



Saint Francis Community Services®
Strengthening Families Since 1945

The program guides potential applicants through complex issues they may face as a resource family. Through carefully designed activities, parents can see first hand the challenges of adopting and fostering children.

It is a 10 week class, starting June 4th. It will be every Monday night from 6-9 at St. Mark's Lutheran Church 2101 Jackson St. in Great Bend.

Contact: Jamie Hatfield 620-793-7454 ext. 4411 or Jamie.hatfield@st-francis.org. The class is free.

Clara Barton Hospital Welcomes Chanda Brown as New Nurse Anesthetist

Clara Barton Hospital is pleased to announce that Chanda Brown, ARNP CRNA has joined the Clara Barton medical team as a Certified Registered Nurse Anesthetist with Clara Barton Hospital and Surgical Services.

Brown grew up in Texas and attended college at Newman University in Wichita, KS where she graduated with her Masters in Nurse Anesthesia. She most recently worked for St. Catherine Hospital in Garden City, Kansas and prior to that practiced in New Mexico. Brown has experience working with general cases, obstetrics, pediatrics, orthopedics and trauma.

"I am thrilled to be on board with the medical team at Clara Barton Hospital and Surgical Services," said Brown. "I enjoy working in a rural setting, as I am not confined to one specific area of practice. I am very excited to be working in Hoisington where I will get to know my patients while working in the different aspects of the anesthesia realm."

Brown is a known provider at Clara Barton Hospital and has provided PRN coverage over the past few years in the absence of Mike Sheppard, CRNA. After Sheppard's retirement in January, Brown accepted the position as Clara Barton's newest CRNA. "Chanda has provided a smooth transition from the medical excellence provided by Mike Sheppard for the past 23 years," said Jim Blackwell, Clara Barton Hospital President/CEO. "Brown and Sheppard have essentially switched roles, as Sheppard will remain on our medical staff on a PRN basis to relieve Chanda when needed."

Brown lives in Great Bend, KS and has five children. She is currently a captain in the Army and has been a member of the Reserves for the past 10 years. "Chanda comes to us with a remarkable set of skills and experience and has been a wonderful addition to our medical staff," said Blackwell. "We are incredibly honored to have Chanda as the newest member of our surgical team."



Clara Barton Benefit June 15th

Clara Barton
Hospital Foundation's
25th Annual Benefit
Golf Tournament,



CLARA BARTON
Foundation

Dinner, and Auction is set for Friday, June 15th! During the final year of the five-year campaign the Foundation hopes to make the Complete the Dream... Continue the Vision capital campaign a mission complete by meeting the \$1.4 million goal!

This year's annual event will again include a golf tournament, dinner, and silent and live auctions. The golf tournament will feature a four-man scramble at Lake Barton Golf Course, with tee times beginning at 8 a.m. through 12:50 p.m. During this year's tournament you will have even more chances to win with three tournament flights! Cost to enter the tournament is \$90 per player or \$360 per team. Registration deadline is Monday June 11th.

The benefit dinner will be held at the Knights of Columbus Hall in Hoisington with doors opening at 6 p.m. Tickets for this year's "Mission Possible" dinner tickets are \$25.00 per person and must be secured in advance.

Your mission, should you choose to accept it, is to mark your calendars and plan to attend the annual benefit event to help the Foundation celebrate their 25th annual benefit in a big way! With only 225 tickets sold, be sure to get yours early! To register for the golf tournament or to purchase your dinner tickets please visit www.clarabartonhospital.com, call Michelle Moshier at 620-653-5012, or email foundation@clarabarton.hpm.in.com. Your support of this event will make Clara Barton's "Mission Possible" today, tomorrow and for many years to come! See our insert in this month's OBJ to see a listing of all of the wonderful sponsors who also help to make the Clara Barton Hospital Foundation mission possible!



June Jaunt

get your "fix" on K-96

7th Annual

June 1-3, 2018

<p>FRIDAY, JUNE 1</p> <ul style="list-style-type: none"> 100th Birthday of County Courthouse Cruise Night to Airport & Car Show Airport Run the Runway & Open House Free Movie in Big Airport Hangar! Chief's Badge Hunt Library Kickoff & Community Luau <p>SATURDAY, JUNE 2</p> <ul style="list-style-type: none"> Outdoor Food & Vendor Fair Live Music by Various Performers Free Jumbo Yard Games Tricks of Light Fire Dancers Kids Zone with Mega Inflatables GB Strongest & Fittest Competition Bear Exhibit Grand Opening Jumbo Monopoly In Stores! 	<p>SATURDAY CONTINUED...</p> <ul style="list-style-type: none"> HAP Dumont Baseball Tournament Beer Garden by Sunflower Shrine Club MACK June Jaunt Fun Fly Golden Belt Wood Carvers Live Carving Great Bend Fashion Show Horseshoe Tournament at Brit Spough Masonic Lodge 1960 Corvette Raffle Activities & Fun Hunt at Zoo Chief's Badge Hunt Matthew the Magician Free 40s Style Swing Dance Lessons <p>SUNDAY, JUNE 3</p> <ul style="list-style-type: none"> Chief's Badge Hunt Fishing Derby Picnic at the Parks Day
-----------------------------------------------------------------------------------------------------------------------------------------------------------------------------------------------------------------------------------------------------------------------------------------------------------------------------------------------------------------------------------------------------------------------------------------------------------------------------------------------------------------------------------------------------------------------------------------------------------------------------------------------------------------------------------------------------------------------------------------	----------------------------------------------------------------------------------------------------------------------------------------------------------------------------------------------------------------------------------------------------------------------------------------------------------------------------------------------------------------------------------------------------------------------------------------------------------------------------------------------------------------------------------------------------------------------------------------------------------------------------------------------------------------------------------------

Explore

GREAT BEND

Shop • Stay • Play



THE CITY OF
GREAT BEND

For Full Schedule of Events or
More Information Call City Hall at
620.793.4111 or greatbendks.net.
Like us on Facebook at
Explore Great Bend!

EXPLORE GREATBENDREC



NEW EQUIPMENT!

Cavanaugh Wellness contains PreCore & Life Fitness Cardio & Strength equipment.

Come check out the Treadmills, Elliptical Cross Trainers, Recumbent Bikes, and 10 Strength Stations!



GREAT BEND Rec

Great Bend Rec
1214 Stone Street
620.793.3755
facebook.com/greatbendrec

3 Reasons to Hire The HR Pro



You have employees but can't afford your own Human Resources department.



Your company needs assistance tackling a special Human Resources project.



Your H.R. department needs a boost from a seasoned industry expert.



Erika Brining
SPHR & SHRM-SCP
620-793-0985

the
HR
Pro

7th Annual Farm & Ranch Expo Deemed a Success!

Thank you to the countless volunteers and local businesses who stepped up to support the 7th Annual Great Bend Farm & Ranch Expo that took place the first week of April. We here at the Chamber have deemed this the "friendliest farm show in the Midwest" and that is thanks to YOUR genuine hospitality to hundreds of exhibitors and thousands of spectators welcomed to Great Bend. The economic impact of this event is so vital to our community.

We also want to extend a very special "Thank You" to Jan Westfall who is retiring as Farm Show Chair. Jan has been a cheerleader for Great Bend and orchestrator of this event for nearly 30 years. Please help us wish Jan the very best! We invite you to view more photos on the Chamber Facebook page!



After many years as a volunteer and nearly a decade holding the reigns, Jan Westfall has stepped down from her role as Show Chair. She leaves big shoes to fill!



Realtor Sarah Panning Joins MPIRE Realty Group

Great Bend's real estate brokerage, MPIRE Realty Group, is pleased to announce the addition of licensed Realtor® Sarah Panning to the team. "We continue to rapidly expand our team of professionals since opening the company last year," says Aaron Andrews, Broker for MPIRE Realty Group. "A Great Bend native, Sarah was born and raised south of town on her family's farm. Her agricultural background will be a great asset as she assists sellers and buyers in our rural communities. She brings great enthusiasm, personal knowledge of the market, and extensive customer service experience to MPIRE."

Sarah is a graduate of Great Bend High School and attended Fort Hays State University where she studied business and leadership. "I am a fresh face in the real estate industry, and I'm excited to help both buyers and sellers throughout Central Kansas," Panning says.

Sarah lives in Great Bend with her beautiful daughter Paisley. Always active in the community, Panning is a Great Bend Chamber of Commerce Ambassador, member of Barton County Young Professionals, and leader for MOPS (Mothers of Preschoolers).

MPIRE Realty Group specializes in residential and commercial real estate transactions, and coaching clients through the process of buying and selling a home. Learn more on their website, www.mpirerealtyks.com, or contact the real estate team at 620-792-4133. You can also follow the agency on Facebook.



Ambassador Profile - Tiffany Schoendaler, CPCS

What brought you to Great Bend? What keeps you here?

I grew up in Great Bend. While working for Central Plains Computers, I decided to go back to school and get my associates, from Barton Community College, in Business Management. My husband moved here when we were dating and now we have started a family here. Couldn't imagine living anywhere else.

Where do you work and what do you do there?

I am the office manager at Central Plains Computers. I do payroll / accounts payable / accounts receivable. I also do a little bit of tech work. I make sure our technicians arrive to customers on time.



What's one thing about you that would surprise people?

After high school I moved to Sydney, Australia to attend a leadership college for a year.

What energizes you and brings you excitement?

Worship music energizes me. I love just sitting and listening to music and worshipping my God! My family also brings me excitement! I love spending time at home with our baby boy. He is starting to belly laugh more and more which makes me happy seeing him so happy!

At what job, would you be terrible?

Nursing...I can't stand the thought of sticking people with needles.

How long have you been a Chamber Ambassador and what do you like most about it?

This is my third year of being a Chamber Ambassador. I have made a lot of connections through being a Chamber Ambassador. I love getting involved with the Chamber and the community.

About Chamber Ambassadors:

The Great Bend Chamber of Commerce & Economic Development Ambassador Club is made up of 30 men and women from the Great Bend business community who represent the Chamber as volunteers. To find out how you can become a member of the Ambassador Club, contact the Chamber: 620-792-2401.

Join Us for an Employer Roundtable May 15th

Are you a small business owner? Are you an HR Professional? Do you have employees? If your answer to any of these questions was yes... then the Employer Roundtable may be a valuable resource for you!

Tuesday, May 15, 2018 @ 11:30 am

The Page Banquet Room, 2920 10th Street in Great Bend

Topic: Employment Policy Essentials

Presenter: Erika Brining, The HR Pro

Registration: \$20 Per Person, Includes Lunch

Quick question... how long would it take your employees to locate a current copy of your employee handbook? Are your HR policies & manuals gathering dust on a shelf somewhere? Join us on May 15th to learn more about why your HR policies should be living, breathing documents that evolve with your workplace. Erika Brining, The HR Pro, will share how your company's guiding documents like employee handbooks, accurate job descriptions, and other policies and procedures can reduce risk, improve employee relations and facilitate consistent management decision making.

Who Should Attend? All are welcome to attend this seminar; however, the topic is most applicable to HR Professionals, business owners and managers. Register online: www.greatbend.org!

GREAT BEND
CHAMBER OF COMMERCE
& ECONOMIC DEVELOPMENT

WELCOME
to Our **NEWEST**
Chamber Members

RADIO KANSAS

815 N Walnut, Suite 300

Hutchinson, KS 67501

800-723-4657

www.radiokansas.net

Non-Profit Arts, Radio

TACO BELL

Kristian Pearson, General Manager

3607 10th St.

Great Bend, KS 67530

620-792-7449

Restaurant

JONI MUDGE, SENIOR CARE ADVOCATE

2700 28th St.

Great Bend, KS 67530

515-559-4238

jmmudge@yahoo.com

Social Service

WANT TO JOIN THE CHAMBER?

If your company is interested in joining the Great Bend Chamber of Commerce & Economic Development, fill out the online application on our website: www.greatbend.org. Membership is quick and easy to get started, and affordable too!

You can also sign up to attend one of our Chamber Member Orientation & Marketing Services Seminars, which happen several times per year. Sign up on our website:

www.greatbend.org/eventregistration