

A MONTHLY PUBLICATION OF THE
GREAT BEND CHAMBER OF COMMERCE

business journal

1921



2021

"Made in GBK" back in 2021

Manufacturers in the United States need to fill 4 million jobs by 2030, according to a workforce study by The Manufacturing Institute and Deloitte. More than half of those jobs could be left unfilled because of two issues: a skills gap and misconceptions about modern manufacturing.

Creators Wanted is the manufacturing industry's largest campaign to build the workforce of the tomorrow—and inspire, educate, and empower a new generation of creators in the United States today. It is also the industry's year-round effort to build the workforce of the future. MFG Day is focused events to promote manufacturing to students, parents, and educators for the first Friday in, and throughout, the month of October.

The Great Bend Chamber of Commerce is again partnering with Creators Wanted to facilitate events locally with the "Made in GBK" campaign. Through partnerships with the Great Bend High School, Barton Community College, Great Bend Economic Development, and Kansas WorkforceONE, the chamber will create opportunities for manufacturers to show students what they do, highlight the economic importance of manufacturing, and draw attention to rewarding manufacturing careers.

Now in our third year, "Made in GBK" kicked off with a joint proclamation recognizing Manufacturing Day by Barton County and the City of Great Bend. Next, students and community leaders will tour participating



manufacturers in the area to see first-hand what is being created right here at home. Students will receive bags with needed safety equipment, "Made in GBK" t-shirts, and information about the facilities being toured.

Following their tours, students will be asked to complete a brief survey and VOTE on their favorite manufacturer. The manufacturer with the most votes will be recognized during the Building Bridges event, held on the evening of November 3rd at the Great Bend High

School, by receiving the first "Made in GBK" Award, culminating the month-long celebration.

By 2025, Creators Wanted aims to reduce the skills gap in the United States by 600,000, as well as increase the number of students enrolling in technical and vocational schools or reskilling programs by 25% and increase the positive perception of the industry among parents to 50% from 27%.

Here in Great Bend, we're doing our part in helping attain these goals.

Be sure to follow the Chamber's Facebook page for highlights on our manufacturers during the month of October. A recap with photos, videos, and the winner of the "Made in GBK" Award will be available in the November Outlook Business Journal (digital-only).

Special thanks to our "Made in GBK" sponsors: Kansas Manufacturing Solutions and Hutton.



2019 Manufacturing Day



here for you

WE DO I.T.

CLOUD
INFRASTRUCTURE
MANAGED IT
SECURITY

nex-tech.com/business • 800.588.6649



Committed to
caring for the
Great Bend
community.

Providing the Great Bend community greater access to the resources of the only academic health center in Kansas. Together, we are committed to ensuring the continued well-being of this community, close to home.

kansashealthsystem.com/community

Scott Donovan Wins Kansas Association of Broadcasters Mike Oatman Award for Broadcast Sales Excellence

Eagle Radio of Great Bend is proud to announce the 2021 winner of the Kansas Association of Broadcasters Mike Oatman Award for Broadcast Sales Excellence is Scott Donovan. Scott has often said, "this is the only job I've ever had" speaking of his tenure with KHOK which started in July of 1983 as nighttime radio DJ.

Currently KHOK Director of Sales, Scott throughout his career has forged incredible relationships. With listeners as he's worked every shift there is in radio at one time or another. Within our community as a leader serving on countless boards over years, whether as Vice President of the Great Bend Knights of Columbus, his brand new membership of the Kansas CASA Organization board, or as the 2002 Chairman of the Kansas Association of Broadcasters, among so many others.

And vitally, relationships with local businesses as their marketing consultant, helping in turn those businesses grow and thrive.

To date in his career Scott has generated over \$9 million in revenue for Eagle Communications. But the economic impact of those marketing efforts across communities in Kansas is estimated to be over \$81 million as the local business community sees their marketing investment return to them through dollars in turn spent by customers and injected back into the local economy.

"Building relationships with people and businesses is the key to success in Sales," Scott said. "Local

and Live' are my 2 favorite words in this industry and I know that Ol' Mike Oatman, might have agreed with me. Mike was one of a kind and I am honored to keep his memory alive and receive this recognition."

Scott is an invaluable resource, not just to Eagle, but to the growth and vibrance of our local community. The opportunity to partner with Scott is to take advantage of all of the power and life changing capabilities that radio delivers today and will continue to for years to come. We at Eagle in Great Bend are immensely proud of Scott's accomplishments and could not think of a better recipient of the Mike Oatman Award for Broadcast Sales Excellence.



Scott Donovan

You didn't miss it at the fair, the 4-H BBQ is on October 10

K-State Research and Extension - Cottonwood Extension District is proud to announce the Barton County 4-H BBQ. The date is set for October 10th from 11 am to 1:30 pm at the Old 4-H Grounds (between Great Bend & Holsington). Seating is available inside or drive through is available as well. \$8.00/plate for BBQ beef or pork, baked beans, cole slaw.

Stop in to check out the 4-H PROJECT FAIR! This is a fundraiser that supports educational activities and event scholarships.

This fundraiser supports educational activities and event scholarships!

Check out the 4-H opportunities in over 30 project areas!

Old 4-H Grounds (between Great Bend and Holsington)

Serving 11 am - 1:30 pm
Inside seating or drive through

Meal includes:
Beef or Pork
Baked Beans
Cole Slaw

Save The Date:
October 10, 2021

\$8.00/plate
Bulk orders of meat may be made by reserving prior to Oct 1 (call 620-793-1910)

Great Bend Children's Clinic celebrates 30th Anniversary

The Great Bend Children's Clinic is delighted to celebrate our 30th anniversary of caring for the kids of central Kansas. From its fledgling beginning in a small office on Lakin with one pediatrician, Dr. Marta Edmonds, 2 RNs and 2 office staff, the clinic has grown to 3 pediatricians, including Dr. Ryan Williams and Dr. Mahefa Ratsimbason, 2 APRNs Karen Norris and Kelli Smiley, a staff of 10 full and part-time RNs, our office manager Tammy Buehler, 6 office and accounting staff and John Edmonds, our business manager.

In September of 1995, the clinic moved to a larger building on Broadway and in December 2009 to its current location at 1021 Eisenhower. It's a child friendly environment with 12 exam rooms, kids' movies playing in the 2 waiting rooms (sick and well) and a well equipped front office, nurses' station and lab. Anytime the clinic is open it's a noisy busy place with children laughing and squealing, an occasional



baby crying, phones ringing, and people chatting. It's an amazing environment of good cheer and genuine caring.

But lest anyone believe that this 30 year journey has been easy, much has changed in the practice of medicine and the business of medicine over 30 years. Operating as a small independent clinic among the giants of medicine has given us autonomy but without the infrastructure for support. We have weathered the storms integrating new technology, adapting to a myriad of regulations, and establishing relationships with local businesses for help along the

way.

What's the secret of our success? The grace of God who has given us resources to do our work, loyal employees who have a passion for kids, and wonderful families who have trusted their children to our care.

Thank you all for letting us be a part of your lives for 30 years!

It's a Growing Season for Kelly's Garden Sense

Growing by a Greenhouse, that is! After a year of shorted availability from growers due to the damage left from winter storms, Kelly Moeder, owner of Kelly's Garden Sense, made the decision to grow more varieties right here in Great Bend. And so, the greenhouse became vital.

Her business model isn't changing, as Kelly Moeder said, "We will forever be the "We Bring the Greenhouse to You" company, our customers will never have to come to us."

With over 5,000 plants on order for plugs to grow for their 2022 planter design season, the greenhouse is sure to be filled with color by Spring. Kelly also plans to keep a large stock of shrubs and perennials for other landscaping designs.

"It is the first of what we hope to be many stock-only growing greenhouses," Kelly said. "Built through sweat, grit, laughter, and sometimes choice words!"

Kelly's Garden Sense is constantly pushing forward to provide premier and unique products to our customers during every season, commercial and residential. Learn more by visiting their website, www.KellysGardenSense.com or check out their

Facebook and Instagram feeds for more pics of the beautiful sunrises, sunsets, and social media famous, greenhouse cats.



Outlook Business Journal

A monthly publication of the

GREAT BEND

CHAMBER OF COMMERCE

1125 Williams,
Great Bend, KS 67530
Phone: 620-792-2401
Fax: 620-792-2404
www.greatbend.org

EXECUTIVE COMMITTEE

Chairman
Pete Wesner, CUNA Mutual Retirement Solutions
1st Vice Chair
Jerry Renk, American State Bank
2nd Vice Chair
Shelly Peacock, TCI Answering Service
Immediate Past Chair
AJ Chrest, Aflac District Coordinator
Treasurer
Michael Miller, Ronald Miller Public Accounting

BOARD OF DIRECTORS

Glenna Achatz
Coldwell Banker Sell Real Estate
Rich Baskerville
Ambassador Club (First Kansas Bank)
Rob Bauer
Bauer, Pike, Bauer, Wary & Carroll, LLC
Sue Cooper
Barton County / Central Kansas Partnership
Scott Dewerff
KanEquip
Logan Garrett
G-B Tire, Inc.
Randy Goering
Eagle Radio
Ana Hayson
Rana Luna Boutique
Jay Luerman
BCYP (First Kansas Bank)
Teresa Powelson
Golden Belt Community Foundation
Leslie Mingenback
Miss Pretty Pickles / MyTown
Regan Reif
The University of Kansas Health Systems
Douglas Reiser
Central Kansas Surveying & Mapping Inc.
Todd VanSlike
Golden Belt Bicycle Company

EX-OFFICIO

Lindsey Krom-Craven, Great Bend City Council
Christina Hayes, Great Bend CVB
Sara Hayden, Great Bend Economic Development, Inc.
Shawn Hutchinson, Barton County Commission
Dr. Carl Heilman, Barton Community College
Khris Thexton, USD 428
Tory Marie Arnerberger-Blew, Kansas State Legislature

CHAMBER STAFF

Megan Barfield, President/CEO
Lee Ann June, Communications & Program Coordinator
Tayler Stegman, Office Manager

FREE E-WASTE RECYCLING




Does your *residence* or *business* have *electronics* in need of *safe and responsible recycling*?

Computers & Monitors
Printers
Fax Machines
Laptops
Televisions
Video Game Consoles
DVD Players
VCR's & Cameras
Cell Phones
Telephone Equipment
...and More!

DROP-OFF LOCATIONS

Rosewood
Maintenance Building
2200 Main St., Great Bend
Mon - Fri, 9:00 am - 4:00 pm
Rosewood Bargain Barn
1215 Main St., Great Bend
Mon - Fri, 10:00 am - 6:00 pm

By recycling with us, you benefit your community, the environment, and you help create jobs for individuals with developmental disabilities.

You will receive a tax deduction receipt when you drop off unwanted electronics.

Rosewood ecycle
2200 Main St.
Great Bend
South of the Dairy Queen!



CONTACT INFORMATION
(620) 603-8348
www.RosewoodServices.com

The Mission of Rosewood ecycle is to provide work-related training and employment opportunities to adults with developmental disabilities.

Local Businesses Link Arms in a Week-Long Celebration of Assisted Living

Almost Home joined tens of thousands of assisted living communities across the country for the festivities of National Assisted Living Week® – September 12-18, 2021. Honoring this year's theme, "Compassion, Community, Caring," they made it even more personal by adding the 4th C – Comfort (of home), unique to the quality of care provided by their HOMEplus, non-profit healthcare option located in Great Bend, Kansas.

"After a year of challenges in the Health Care industry, this year's National Assisted Living Week took on even more meaning," said Leilani Schenkel, executive director of Almost Home. "Our mission would not be possible without the community's support and this week, numerous local businesses and organizations stepped up to show their support to our residents and staff in this week of celebration."

Events throughout the week of the celebration included displays of encouragement, crafts, food, live entertainment, and some special involvement and visits from the community and neighbors (a few furry 4-leg friends, included). All events took place within the comforts of the residential HOMEplus, located at 1919 Van Buren St. in Great Bend.

"Compassion, Community, Caring and Comforts (of home)' reflect the hard work and dedication of all the caregivers in assisted living communities and highlights the importance of family and remaining connected to those you love." Said Schenkel. "We are so fortunate to provide residents all the benefits of living at home, but with



Almost Home Residents pose with their Pick-Me-Up, Pick-up Truck craft, created during the National Assisted Living Week events. The kitchen table at Almost Home is a place to enjoy homecooked meals as well as conversation and often activities like crafts, cooking class, games, and more.



professional medical staff on hand 24/7 to help ensure their comfort and wellness."

A special thanks to the local Dillon's food store and Florist, Dilly & Doc, and Papa Murphy's for treating the Residents of Almost Home and our followers on Facebook.

It's a Short Season for Long Pumpkin Patch

The Long Pumpkin Patch opens for the 2021 season Sept 25th. Open Saturdays 10-6 and Sundays 1-5. No admission fee - pumpkins sold by the pound. You pick pumpkin patch, lots of varieties of pumpkins, gourds



& Indian corn. Corn maze, corn pit, obstacle course, bale fort, culvert swing, gourd launcher and lots of photo ops! Call 620-792-3503 to schedule field trips or private

parties in the barn.



NATIONAL FIRE PREVENTION MONTH

81% OF FIRE DEATHS INVOLVED STATIONARY OR PORTABLE SPACE HEATERS

KEEP YOUR FAMILY SAFE THIS WINTER:

- Get your system inspected by the Pros early to ensure it isn't leaking carbon monoxide.
- Upgrade your heating system to a high-efficiency Bryant unit so your home is heated properly without the use of space heaters.

UPGRADE TODAY AND PUT A FREEZE ON WINTER FIRES.



WHATEVER IT TAKES.

(800) 937-3030 | COMFORTPROKS.COM

HIGHLIGHTED EVENTS IN OCTOBER

- 1...Birthday Night NA @ 1910 17th St, 8pm
- 1...2 Year Celebration, Sweet Dreams Candy Shop, 1403 Main St., 10am
- 2...United not Divided, Raising Narcan Awareness Kickball Game, Brit Spaugh Park, North Field, 6pm
- 2...2 Year Celebration, Sweet Dreams Candy Shop, 1403 Main St., 10am
- 3...1st Annual Beef 'N Brew, Dry Lake Brewing, 1305 Main St., 1pm
- 3...4-H Membership Drive and Bowling Party, Walnut Bowl, 3101 Washington, 2pm
- 3...BCYP Fall Fest – Sponsored by Wheatland, Long Pumpkin Patch, 163 NE 30 Rd, 5pm
- 4...No School/Teacher In-Service – USD 428
- 6...ADVANTAGE Workshop, Events Center, 3111 10th St., 8:30am & 1:30pm
- 7...ADVANTAGE Workshop, Events Center, 3111 10th St., 8:30am & 1:30pm
- 7...Chamber Coffee: Chris Boys Agency, 1925 10th St in Great Bend, Program @9:30am on the Chamber's Facebook Page or You Tube Channel**
- 10...4-H BBQ, 4-H Grounds, US-281, 11am
- 12...Golden Belt Community Concert, The Folk Legacy, 1214 Stone St., 7:30
- 13...Member Services & Marketing Seminar, Chamber Office, 1125 Williams St, 10am**
- 14...Chamber Coffee: Barton Community College, Camp Aldrich, 884 NE 110th Ave, Program @ 9:30am on the Chamber's Facebook Page or You Tube Channel**
- 14...CKCA Curbside Chili Feed, 215 S. McKinley St, 5pm
- 15...No School – Teacher Grading/Collaboration – USD 428
- 15...Free shred Day, Landmark National Bank, 1623 Main St., 11am
- 16...Walk to End Alzheimer's, Court House Square, 1400 Main St., 9am
- 16...Woodbine Fall Festival, 2 Miles West of HWY 77 on KS-209, 9am
- 16...Kiwanis Costume Drive! GB Public Library, 1409 Williams St., 12pm
- 18...Parent-Teacher Conferences – USD 428
- 19...Central Kansas Partnership Meeting, Court House, 1400 Main St., 11am
- 20...Barton County Community Outlook Event, Events Center, 3111 10th St., 1pm
- 21...Chamber Coffee & Ribbon Cutting: A440, 1207 Main Street, Program @ 9:30am on the Chamber's Facebook Page or You Tube Channel**
- 21...Early Dismissal @ 11:30am – USD 428
- 22...No School – USD 428
- 23...Credit Union of America's Great Bend Shred Day! 4708 10th St., 9am
- 23...Hall of Fame Banquet, Events Center, 3111 10th St., 5pm
- 25...Chamber Chat LIVE: What's Up, Great Bend! Virtual, 2pm**
- 25...Chamber Coffee: Fire and Police Department, 1217 Williams St., Program @ 9:30am on the Chamber's Facebook Page or You Tube Channel**
- 29-30...Annual Garage Sale for Shelter Pets, Events Center, 3111 10th St., 2pm

Recurring Events:

Great Bend City Council Meetings, 1st & 3rd Mondays, City Hall, 1209 Williams, 6:30pm
 Barton County Commission Meetings, Every Tuesday, Barton County Courthouse, 1400 Main St, Rm 106, 9am
 Great Bend Summer Street Stroll Farmers Market: Great Bend Courthouse Square. Thursdays 4:00pm to 7:00pm.
 Visit greatbend.org/events/calendar for a full list of great events taking place throughout the month!
Virtual Chamber Events (Chamber Chat & Virtual Coffees) can be found: via Facebook (www.facebook.com/gbcoc) or YouTube (tinyurl.com/ybepgrt6)

STAY INFORMED AT GREATBEND.ORG

GREAT BEND
CHAMBER OF COMMERCE

WELCOME
to Our **NEWEST**
Chamber Members

AMERICAN NATIONAL INSURANCE

Jake Fryberger, Agent
 Great Bend, KS
 (620) 639-5097
jake.fryberger@american-national.com
Insurance

CONSTRUCTION RESOLVE LLC

Andres Mata, Owner
Constructionresolvellc26@gmail.com
 207 Pine St.
 Great Bend, KS 6730
 (620) 603-3765
constructionresolvellc.com
Construction

GLMV ARCHITECTURE

JR Robl, Director of Business Development
jr.robl@glmv.com
 1525 E Douglas Ave.
 Wichita, KS 67211
 (913) 991-7921
glmv.com
Construction Supplies & Services

WANT TO JOIN THE CHAMBER?

If your company is interested in joining the Great Bend Chamber of Commerce, fill out the online application on our website: www.greatbend.org. Membership is quick and easy to get started, and it is affordable, too!

You can also sign up to attend one of our Chamber Member Orientation & Marketing Services Seminars. These seminars happen throughout the year. Members are encouraged to send at least one team member to get acclimated and stay up-to-date on the free or low-cost marketing opportunities available through the Chamber.

Sign up on our website:

www.greatbend.org/eventregistration



ELIMINATE DRY EYE WITH MIBOFLO



620-792-2020

Open 6 Days a Week
2601 10th Street in Great Bend, KS
10thStreetEyecare.com



**Here's the deal.
I'll be there
for you.**

Steve Lunsford, Agent
1018 Kansas Avenue
Great Bend, KS 67530
Bus: 620-603-5707
steve.lunsford.vabhc4@statefarm.com
Hablamos Español

The future has a lot of what ifs, and it's a good feeling to have someone in your corner and around the corner to help you plan for them. Call me today.

Like a good neighbor,
State Farm is there.®

State Farm
Bloomington, IL
2001293



Great Gatsby Gala tickets are now on sale

Pawnee Valley Community Hospital Foundation will be hosting a Great Gatsby Gala on November 6, 2021. Tickets will be on sale until October 12th, 2021 and includes a social hour, dinner, live music and will have a silent and live auction.

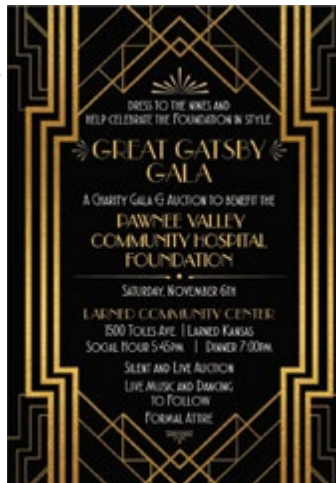
Tickets are \$100 each or a table of 8 is \$800. Cash, check or credit card accepted.

The PVCH Foundation has a major fundraiser in the fall to help raise money for the betterment of Health Care in the Community. Some of the most recent purchases include new scales for the clinic, a Biodex machine for Physical Therapy, a Vitalstim machine for Speech Therapy to help stroke victims, a UPS system for the MRI, a Respite Care Room, and a 3D mammography machine.

The Foundation also believes in community involvement and has created the Kindergarten U program in which they collaborate with Pawnee Valley Medical Associates. This teaches kindergarten students about the hospital and clinic and how each department works.

In the past two years the Foundation hosted the first Community Conversations Distracted Driving event with the Larned and Pawnee High School students and the public. This was followed the next year by a Mental Health speaker to the same individuals.

Tickets are going quick so get yours today by contacting Julie Bugner-Smith@ 620-285-8632 or jbugnersmith@kumc.edu.



Bringing Joy to Area Children In Need

Rosewood AKTION Club Conducting Coloring Book and Crayon Drive Through November

Rosewood Miracle Workers AKTION Club wants to color the worlds of children who need comfort and joy during their difficult times. The group is conducting its annual Coloring Book and Crayon Drive from now through Nov. 30. Upon completion of the drive, club members will distribute the donated items to Central Kansas CASA; Clara Barton Hospital, Hoisington; and St. Francis Community Services, Great Bend. The goal is to deliver the items to the local organizations during the Christmas season.

"We've conducted this drive for the past several years and we hear from local organizations how excited children are to get coloring books and crayons during Christmastime," said Rosewood AKTION Club sponsor Frankie Pelster. "This has been a successful drive in the past, and we are hoping for another good turn-out from the community this year. Amazingly, all the coloring books and crayons we've delivered in the past have been given to brighten the worlds of children in need. Our AKTION Club members are excited to renew their supplies."

People can drop off coloring book and crayon donations, along with monetary donations for the purchase of coloring books and crayons to two locations in downtown Great Bend. Those locations are Rosewood Furniture Gallery, 1607 Main Street; and Rosewood Bargain Barn, 1215 Main Street.



Last year's drive netted 458 coloring books and 604 boxes of crayons.

For the third straight year, Rosewood AKTION Club is in a friendly competition with Rosewood Services employees to see which group can raise the most items. Last year, Rosewood Day Services employees won by one item over AKTION Club to take the trophy. Like the previous two years, community donated items raised from the drive will go toward the AKTION Club count.

"We so appreciate Rosewood Services employees stepping up the past two years, and are asking them to do it again," said Pelster. "But our AKTION Club members are determined to take that trophy this year. With their extra motivation and the community's help, I believe we can un-seat the two-time champions. And if we don't, I'm certain we will collect a lot of coloring books and crayons for area children in need. This drive is sure to be fun, no matter who wins the trophy."

For questions about Rosewood AKTION Club's Coloring Book and Crayon Drive, contact Pelster at 620-603-6502; employmentspecialist@RosewoodServices.com.

Ribbon Cuttings!

Morrison-McFadden VFW Post 3111 and VFW Auxiliary Post 3111 joins the Chamber of Commerce and celebrates with a ribbon cutting



Morrison-McFadden VFW Post 3111 and VFW Auxiliary Post 3111 commemorated joining the Great Bend Chamber of Commerce with a ribbon cutting on Thursday. The Chamber staff, ambassador's club, along with members and volunteers of the local VFW were in attendance, they shared information on membership, community service, events, and tournaments held at the VFW. "We want to ensure the community is aware of the VFW and the VFW's purpose of serving Veterans and the community. Also, to highlight our facilities and event space that is available to rent for parties, weddings, fundraisers etc.," Mike Harbaugh, VFW Quartermaster. VFW members encourage those Veterans of Foreign War to join the local VFW and help them continue their mission in helping others, supporting each other, and giving back to the community. The VFW is also looking for Auxiliary members, which are family members of Veterans who have served in a foreign war, to join and support their mission. Check out the club and the history behind it. To find out more about the local VFW find them on Facebook: VFW Post 3111, call (620) 792-2754, or email postvfw3111@gmail.com.

GTR Limousine & Party Services celebrates opening the new business with a Ribbon Cutting



GTR Limousine & Party Services' owners, Ruth Joiner and Dean Nuss, invited the Chamber and Ambassador's Club to commemorate opening the new limousine and party service with a ribbon cutting. Ruth Joiner spoke to the group about starting the business three months ago with the limousine service only. After partnering with Dean Nuss, GTR expanded their services to include the only party bus service in central Kansas. Co-owner Dean Nuss went on to say, "GTR Limousine and Party Services has the best and most unique party bus in the state of Kansas and we offer outstanding customer service and reasonable prices. Call us and let the Good Times Roll." Both Nuss and Joiner stressed the importance of booking services early to guarantee your date is available.

For more information on GTR party services call 620-786-5372 or 620-791-7759, go online: gtrpartybus.com, gtrlimopartyservices@gmail.com, or find them on Facebook.



August and September have kept chamber staff, board, and ambassadors busy "Living the Mission!"

Highlights of the last few weeks for the Great Bend Chamber of Commerce include the return of the Business Showcase, Kids' Ag Day, and the New Teacher Orientation and Welcome. In addition, along with Kansas State Representative Tory Marie Arnberger-Blew, the chamber hosted state legislators as they toured South Bend Industrial Hemp to learn more about the impact of policy. Plus! Chamber staff appeared and hosted a variety of other events and conversations including:

- welcoming NHRA Nationals to the SRCA Dragstrip
- discussed current small business legislations with US Senator Jerry Moran,
- introducing Kansas Chamber's Making Kansas Bus Tour to three local manufacturers,
- production of multiple chamber coffees and ribbon cuttings,
- launching a brand-new look to Central Kansas Jobs, and
- continuing the monthly live stream of "What's Up, Great Bend?" on Facebook and YouTube.



Scan to watch to learn more about what it is your Chamber does for YOU! Through your membership dues and sponsorship of events, your business is supporting the mission – you're supporting the business community and their success, and THIS is what that looks like. Enjoy!

Scan QR code above or <https://flic.kr/s/aHsmWMHuki>

Promotions & New Hires:

Ford sees substance-use clients at The Center's locations

Kevin Ford had not abused alcohol or other substances for three months. Then came the lost weekend.

He was only 19 years old at the time.

Through the partnership with Mirror and The Center for Counseling & Consultation, Ford is the new substance-use clinician seeing clients four days a week in central Kansas.

"When I used substances that long-ago weekend, I didn't know what had happened for the previous three days," Ford said. "I stayed clean for another three months but things were getting crazy again.

"So, I checked myself into a rehab program and haven't used anything since."

For the past 36 years, Ford has been a substance-use counselor. He is currently employed by Mirror and sees clients at The Center's locations, which is a win-win for both organizations, Ford said.

"Before my recovery began, I used about anything you put in front of me," Ford recalled. "Mainly it was alcohol and then stimulants to stay awake to drink more alcohol."

In light of this background, Ford encourages anyone who is wondering if they have a substance-misuse problem to contact him or another counselor.

"It is definitely worth looking into," he commented. "That is really the hardest part of all this – making that first call. But it is never too late. It is only too late when the funeral plans have to be made."

Since Ford understands many people may be apprehensive at first, he outlined the basics of what clients can expect.

"I help people explore," Ford explained. "I am not here to change your mind but to challenge you. Maybe you'll make changes, maybe you won't. I want to give you other ways to look at your situation."

If treatment is recommended, an individual's circumstances are taken in

to account. Options include outpatient or inpatient treatment, and community support groups.

"Not

everyone needs inpatient treatment to get better," Ford noted. "In many cases, I strongly recommend support groups but it is nothing I demand."

Ford began seeing local and area clients at the end of July and about a month later he had 40 clients. "This is a lot more than we expected this early on. People were waiting for this to happen."

On-site substance-use counseling wasn't available at The Center for a couple of years before Ford signed on.

"Substance-use counseling is my passion," Ford commented. "I have 36 years of experience and am so pleased with this much needed partnership between The Center and Mirror."

He sees clients at 5815 Broadway in Great Bend Mondays and Wednesdays; 217 E. Ave. N in Lyons Tuesdays; and 606 Topeka, Suite 101 in Larned Thursdays.


Ford is a licensed addiction counselor and Kansas certified gambling counselor.

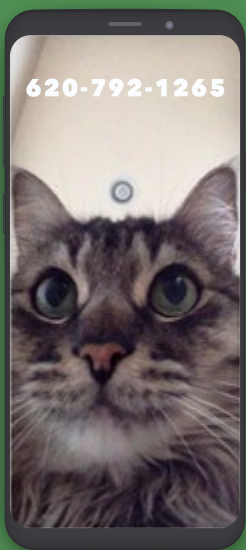
In 2015, Ford helped develop an outpatient program at The Center. Other employers over the years include the Kansas Department of Corrections where he was a unit team manager and director of the Chemical Dependency Recovery Program at Larned Correctional Mental Health Facility; and New Chance where he was a counselor and intermediate supervisor.

The Center for Counseling & Consultation is a Community Mental Health Center serving Barton, Pawnee, Rice and Stafford counties. Professionally trained personnel offer: individual and group therapy; marriage and family counseling; community-support services; community-based services; psychosocial rehabilitation; peer support; and medication management. The confidential 24/7 crisis hotline number is 800-875-2544.



Kevin Ford

OCTOBER SPECIAL 



FELINE VACCINATIONS
+ Rabies Shots

~~\$41~~ **\$25**

Leukemia Shots \$16 | FeLV/FLV \$10 Off



**Heart of Kansas
Family Health Care, Inc.**

Phone: **620-792-5700**
1905 19th Street in Great Bend, Kansas

**Family Practice,
Behavioral Health &
Dental Services**

- Preventative Care
- Prescription Assistance
- Diabetes Management
- Evening Appointments
- Open to Everyone
- Bilingual Staff
- All Insurance Accepted

Including Medicare, Medicaid & KanCare

"We Care About Your Health"

www.HeartofKansas.com

New Hires & Promotions:

Jennifer Gregg joins Central Kansas CASA team

Central Kansas CASA is excited to announce the addition of Jennifer Gregg as their Program Executive Director. Jennifer became familiar with the CASA organization when her and her husband Ryan Gregg served as Foster Parents in a Kinship setting many years ago. As a longtime Great Bend resident she has a special place in her heart for this community and children in need.

Jennifer earned her Bachelor's of Science Degree in Sociology with an emphasis in Criminology and Family Studies from Kansas State University in 2003. She is an active member in Prince of Peace Parish, and her younger two children attend Holy Family School. Additionally she serves as the secretary of the Great Bend High School Booster Club Board. Outside of the office, she enjoys time at their family sandpit, camping and kayaking, and attending her children's sporting events.

In her new role, Jennifer will oversee the administration, programs, and planning for all cases within the 20th Judicial District, as well as arrangements for CASA's annual Chocolate Auction.

Prior to joining CASA Jennifer worked at Fuller Industries LLC, in the accounting department. Other previous employment includes 7 years as a Bridal Manager at Beautiful Beginnings Boutique, and 10 years as a Home Daycare Provider.

Jennifer and her husband Ryan have four daughters; Madelynn, Ava, Hadley, and Isabel.



Jennifer Gregg

Congratulations!

Micca Schneider, MD, returns home to join family medicine practice

A Great Bend native has returned to her roots to join the family medicine team at The University of Kansas Health System. Micca Schneider, MD, will come on board October 1. Her office will be on the 1st floor at St. Rose Medical Pavilion, 3515 Broadway Ave.

Dr. Schneider offers the gamut of family medicine care to patients of all ages, and she focuses much of her time on obstetrics, women's health and pediatrics.

"I hope to deliver a lot of babies, care for them as they grow into adulthood and then deliver their babies," said Dr. Schneider, whose skills include performing cesarean sections. "This is the beauty of family medicine. Continuity of care is so important."

Perry Smith, MD, who recently retired, is Dr. Schneider's "role model and mentor. I shadowed him at work even before medical school. Then I did my family medicine rotation with him, and the specialty just clicked with me."

Jeff Brozek, MD, also serves as a mentor to Dr. Schneider, and "As my personal family doctor, he set the example of what an excellent family physician should be."

Dr. Schneider said she is "impressed with the scope of services, other providers and nursing staff at St. Rose Medical Pavilion and Great Bend Campus. The health system provides

everything I need by offering the full spectrum of care to families. And the people here have been so welcoming and open. It is just a good fit."

One benefit for the 2010 Great Bend High School graduate and salutatorian is returning to her hometown and being close to family and friends. David and June Schneider, rural Great Bend, are her parents. Her brother and sister-in-law, Matt and Callie Schneider, also live in rural Great Bend.

She earned her bachelor's degree in cellular biology in 2013 at the

University of Kansas and medical degree in 2018 from the University of Kansas School of Medicine in Kansas City.

Dr. Schneider recently graduated from her Wesley family medicine residency in Wichita. During residency rotations there, she spent time working with Dr. Smith. She was named supervising resident for inpatient adult medicine, inpatient pediatrics and obstetrics in 2019.

Dr. Schneider will join Jonathan Pike, MD, at St. Rose Medical Pavilion. Dr. Pike is moving from 1309 Polk St. to St. Rose Medical Pavilion effective September 7. Additional family practice doctors at St. Rose Medical Pavilion include Charles Keener, MD, and Mark VanNorden, DO.



Micca Schneider, MD

Accomplished business executive joins Foley as it prepares for continued customer growth

Foley Equipment announced the addition of new Chief Financial Officer Michael Collins. He will lead the dealer's finance functions and operations—including Financial Planning & Analysis, Accounting, Tax, and Credit—as well as oversee the IT and Enterprise Process Management teams.

Foley CEO Ann Konecny notes that Collins is joining the company during unprecedented times. "Business has remained strong throughout the pandemic and is showing no signs of slowing down," said Konecny. "In fact, we're expanding services in some areas to continue to serve our customers' growing demand."

"I'm impressed by Foley's sound financial operations and ability to thrive throughout

changing markets," added Collins. "I look forward to joining such a strong leadership team and am excited by the opportunities ahead."

Immediately before joining Foley, Collins served as a senior strategic and financial leader at C.H. Robinson, a global leader in logistics and supply chain management. Prior to that, he led finance, strategy, and business development at SPX Corporation, and was a senior auditor at Ernst & Young. Collins holds a Bachelor of Science degree in Business Administration and Accounting from the University of Kansas.


"Mike brings a wealth of experience and skills, and I look forward to working with him to continue to progress and grow," said Konecny.



Michael Collins

Great Bend Rec
ENROLL NOW

FALL
Activity
GUIDE



GREAT BEND RECREATION COMMISSION

- ONLINE REGISTRATION
www.greatbendrec.com
- CALL US 620-793-3755
- REGISTER: SEPT. 20, 2021

www.greatbendrec.com
(620)793-3755
facebook.com/GreatBendRec

GREAT BEND
CHAMBER OF COMMERCE

WINTER STORAGE

Wondering where to store your RV, boat, antique car, or motorcycle this winter?

The Great Bend Chamber of Commerce is now accepting reservations for the 2021/2022 Winter Storage season. Reservations are first come, first serve for spaces inside of Expo II located at the Great Bend Expo Complex. All stored items are secured in a locked facility from November 5th, 2021 through March 5th, 2022 with rates starting at \$225.



TO RESERVE YOUR SPOT, PLEASE CALL (620) 792-2401 OR EMAIL GBCC@GREATBEND.ORG

GREAT BEND

CHAMBER OF COMMERCE

FEATURED AMBASSADOR

*Davis
Jimenez*

*Aflac,
Urban
Defense
Dynamics,
United States
Army*



What brought you to Great Bend? What keeps you here?

So, I grew up in Great Bend and my two kids were born here. What keeps me in Great Bend is my kids and the values that I learned and want my kids to learn. I can't imagine raising my kids anywhere else.

Where do you work and what do you do there?

I work with Aflac by connecting with business owners to create employee benefit strategies that help attract and retain, create financial stability, and ease benefit administration burdens. Locally I am team lead for new business relationships and assist with onboarding businesses offering Aflac for the first time. My evenings I spend at UDD where I am a Certified NRA and USCCA instructor on weapons from Conceal Carry to many more. I am also still in the Army Reserves where I am assigned to the 383rd Military Intelligence unit. There is more I do but ill end with I am also a Great Bend City Council member where I represent the 3rd ward.

What's one thing about you that would surprise people?

I am very competitive and I do not like losing, if it seems like I have lost just wait something bigger is coming.

What energizes you and brings you excitement?

When others say I can't do something and challenge me. Showing my kids anything is possible.

At what job, would you be terrible?

I have always wanted to sell cars but I don't think I would be all that good, I don't know why just don't think it's something I could do.

How long have you been a Chamber Ambassador and what do you like most about it?

I have been a Chamber Ambassador since January of this year. I enjoy the networking and meeting people at the chamber coffees.

About Chamber Ambassadors: The Great Bend Chamber of Commerce Ambassador Club is made up of 30 men and women from the Great Bend business community who represent the Chamber in a number of ways. To find out how you can become a member of the Ambassador Club, contact Lee Ann June at the Chamber office, 620-792-2401, marketing@greatbend.org, or www.greatbend.org/ambassadors

An Update from United Way of Central Kansas

Since 1963, the United Way has been a part of our community. We have grown from covering Great Bend, to Barton County, to Pawnee County, and parts of Rush and Stafford County as well. As we have grown, so have the number of Community Partners that we work with and the number of Impact Projects that we lead. From less than 10 non-profit agencies that we helped to fund, to 22 Community Partners today. From no Impact Projects to nearly 10 Projects, with plans for more.

As United Way of Central Kansas continues to grow, so do all of our Community Partners. Each and every one of them needing more funds each year in order to keep up with the needs of those they serve. Our Community Impact Projects also grow each year, and as we focus

**“..... it’s not just about making a donation
– it is about making a difference”**
- Kathy Calvin, CEO & President of the United Nations Foundation

on equality in Health, Education, and Financial Stability across Central Kansas, we hope to be able to expand these projects and create new, reaching out to those most in need and ensuring that each of our neighbors has a chance to succeed. A focus on diversity, equity and inclusion in all aspects of our work is essential to the continued relevance of United Way as a partner of choice. We must be a leader in the fight for equity and strive to create communities where everyone has the resources, opportunities, and support they need in order to thrive.

We are here – and here to stay! United Way has been in the area for nearly 60 years. We are at the table, we are the conveners, a part of the trouble shooting, problem solving and decision making that is necessary to help those in need. We will continue to fight for the health, education, and financial stability of every person in our community. If you would fight for family, friends, neighbors, acquaintances,—all those you know who need it—then we’re already united in purpose and we ask that you join us. Because change doesn’t happen alone.

UNITED WAY OF CENTRAL KANSAS
Goal of \$275,000



KanEquip's Great Bend Store awarded Pinnacle Status in 2020

“Despite a challenging year in 2020, KanEquip's Great Bend store achieved Case IH's Pinnacle status in all six assessment areas: Sales, Operations, Marketing, Parts, Service, and Advanced Farming Systems. Only 5% of 840 dealers in North America achieved this honor”. KanEquip-Great Bend is on track to once again achieve Pinnacle in all areas for 2021. Case IH's Pinnacle program helps dealerships assess their current capabilities and drive improvements towards being a best-in-class business.”

“Scott Dewerff said these achievements couldn't happen without also having best-in-class customers.”





**CELEBRATING OVER 55 YEARS
OF SERVING PEOPLE WITH
DEVELOPMENTAL DISABILITIES!**

There is a Difference.

EARLY EDUCATION
CASE MANAGEMENT
DISABILITY SUPPORTS
RESIDENTIAL ASSISTANCE
COMMUNITY EMPLOYMENT
RECYCLING & MANUFACTURING
GENERAL PUBLIC TRANSPORTATION
& MUCH MORE!

620-792-1325
WWW.SUNFLOWERDIV.COM

Hutchinson Clinic Physicians Serving the Great Bend, Hoisington & Ellinwood Areas

GREAT BEND:

Hutchinson Clinic Great Bend / 3715 6th Street
Dr. Jamil Ahmed, Cardiologist
Dr. Aaron Thiessen, Ear Nose & Throat
Dr. Curt Thompson, Interventional Radiologist
Natalie Williams, PA, Pulmonology

ELLINWOOD:

Ellinwood Medical Clinic / 611 N. Main
Dr. Jamil Ahmed, Cardiologist

HOISINGTON:

Clara Barton Medical Clinic / 250 W 9th St
Dr. Costy Mattar, Cardiologist
Dr. Christine Sanders, OBGYN
Dr. Curt Thompson, Interventional Radiologist

Exceptional Care Close to Home



Call for an appointment: 620-669-2500
www.hutchclinic.com

CHAMBER COFFEE SCHEDULE

Every Thursday | Doors Open at 9am | Program at 9:30am

Tune in on Facebook or YouTube for Virtual Coffees

October 7th

AMERICAN FAMILY INSURANCE – CHRIS BOYS AGENCY

1925 10th Street in Great Bend

Our team at the Chris Boys Agency - American Family Insurance strive to create relationships with our guests and have three different offices located in Great Bend, Dodge City and Cimmaron to serve you. The Chris Boys

Agency has built a team of nine caring staff members, eight of which are licensed and three that are bi-lingual. Whether you're purchasing a car or home, managing an investment property, starting a small business, needing coverage for your farm/ranch or wanting to leave behind a legacy; they are all dedicated to inspiring and protecting your dreams. As your agency in Great Bend, KS, they will work with you to identify your individual needs, suggest insurance coverage and look for all possible discounts. They look forward to protecting your dreams.

October 14th

BARTON COMMUNITY COLLEGE

Camp Aldrich 884 NE 110 Ave in Claflin, Ks

Barton Community College opened in 1969 and each year more than 15,000 students enroll in Barton's classes which offers traditional general education courses, fine and performing arts opportunities, a plethora of career and technical training offerings, GED courses, transfer options, online classes and an athletic program that boasts 57 national championships. On-campus housing is available to over 400 students. Further, Barton is a leader in providing training to the military with service locations at Fort Riley and Fort Leavenworth.

October 21st

A440 MUSICAL INSTRUMENTS

1207 Main Street in Great Bend

When you walk into A440 Music, the first thing you'll notice is that they are a guitar shop. Sure, they carry all manner of acoustic and electric guitars, basses and amplifiers, but they also deal in band and orchestra instruments, drum sets, PA equipment, and all the cables, strings, reeds, oils, and most any other accessory you can think of. In the back half of the store is our workshop where they can repair instruments, set them up, and get them ready so you can play the music you were born to make.

October 28th

GREAT BEND POLICE AND FIRE DEPARTMENT

1217 Williams Street

The Great Bend Police, Fire, and EMS Departments are the primary public safety agencies for the City of Great Bend, Kansas. Everyone is welcomed to come and join their coffee as they learn more about the public safety needs and requests for both the fire and police departments. There will be tours given and you will be able to ask any questions about the upcoming vote for the new police department in November.

November 4th

RENUE SALON & SALON BEAUTY BOUTIQUE

1419 Main Street in Great Bend

The stress and pressure of life takes its toll. It's time to RENUE! Renue is a full service salon & spa offering everything from haircuts and styles, manicures, pedicures, eyelash extensions, and facials to tanning and massage therapy. Renue offers a luxurious and relaxing atmosphere where you can let the stress melt away. They offer a full line of professional salon products from brands like Redken, Biolage, Aquage and more! Their boutique is stocked with new fashion & accessory arrivals for fall that you'll love! Ask any of their stylists and they will help find the product that fits you best! Stop by or schedule an appointment. You'll love the way you feel.



3307 10th Street • Great Bend, KS 67530

McDonald's

is providing coffee for Chamber of Commerce coffees.

Dr. Nels



A NEW BOOK ABOUT REAL WORLD
HIRING AND FIRING

**GET YOUR COPY ON
AMAZON OR AT DRNELS.COM**

available at
amazon


audible

Save the Date:

2021 Building Bridges

Barton County Businesses and Employees, Parents, and Students:

You're invited to participate in "Building Bridges," an event designed to strengthen the connections between educators, students, and the workforce in and around Barton County.

Businesses and their employees of all skill and professional levels are encouraged to attend.

Our mission is to prepare our students to be capable, contributing participants in a changing world.

Discussion topics will focus on:

- How do we work together to offer Work Based Learning experiences (apprenticeships/internships/job shadows) to our students?
- How do we partner together to provide essential skills training and continued practice to our students?



Wednesday, Nov. 3rd

6:00-8:00 PM

**Great Bend High School
2027 Morton
Great Bend, KS 67530**

AGENDA

6:00 PM:

Networking & appetizers

6:30 PM: Opening introductions & presentations

7:15 PM: Break-out sessions with CTE instructors



A formal invite including RSVP information and details for the evening will be forthcoming.

In the meantime, for more information, please contact:

Lacy Wolters, ACT/Career Coordinator
620-793-1521 or lacy.wolters@usd428.net