

OUTLOOK

GREAT BEND
CHAMBER OF COMMERCE

JANUARY 2024
VOLUME 103 NO. 1

A MONTHLY PUBLICATION OF THE
GREAT BEND CHAMBER OF COMMERCE

business journal

1921



YEARS 2021

BOARD OF DIRECTORS SET, EXECUTIVE OFFICERS ELECTED

2024



ROBERT E. BAUER
CHAIRMAN
BAUER PIKE LAW



SCOTT DEWERFF
VICE CHAIR
KAN EQUIP



JESSICA MILSAP
2ND VICE CHAIR
MPIRE REALTY



SHELLY PEACOCK
PAST CHAIR
INSURANCE PLANNING



BARRY BOWERS
TREASURER
SPECTRUM CPA



JOE ANDRASEK
DAMM PIPE TESTING



WALLY ELDRIDGE
ELDRIDGE FENCING



JEREMY ELLIOTT
MYLAWN TURF & TREE



CHUCK FELLHOELTER
PEOPLES BANK & TRUST



MIKE JOHNSON
MANDM EQUIPMENT



MATT KURTZ
INDENTIFICATIONS



SARAH PANNING
NEX-TECH WIRELESS



SHAWN POWELSON
EQUITY BANK



MIKE RUDDLE
DOONAN SPECIALIZED
TRAILER



FLOR SANCHEZ
HEART OF KANSAS
FAMILY HEALTHCARE



NIKKI SEYBERT
VENTURE COOPERATION



CAMMIE VAUPEL
AMERICAN PLAINS COOP



JIM VOPAT
EDWARD JONES



KENDA WERTH
UNIVERSITY OF KANSAS
HEALTH SYSTEM

Celebrate unsung heroes during Chamber's Annual Event

The 102nd Great Bend Chamber of Commerce's Annual Awards on February 24th will include a Cocktail and Social Hour sponsored by Equity Bank, a catered dinner featuring local caterers, live music, and the special recognition of our community award winners. Attendees will enjoy the evening at Corinthians Hill Event Center, 464 NE 20 Ave. Deadline to reserve seats is February 14th, 2024.

Cocktail and Social Hour: Mingle with fellow community members, local leaders, and honorees during the cocktail hour sponsored by Equity Bank. Build connections, share stories, and celebrate the spirit of unity that defines Great Bend.

Awards Presentation: Witness the presentation of prestigious awards in various categories, each symbolizing excellence, innovation, and a deep commitment to the well-being of Great Bend. Award Presentations Include:

- NextGen Leader of the Year
- Citizen of the Year
- Business of the Year

Dress Code: Black tie optional - let's make this a night to remember!

This Annual Awards Ceremony promises to be an enchanting evening filled with inspiration, gratitude, and a genuine celebration of the vibrant tapestry of Great Bend. Join us as we express our heartfelt appreciation for the remarkable people and businesses that contribute to making Great Bend an extraordinary place to call home.

Reserve your spot today and be part of the magic! Together, let's honor the past, celebrate the present, and shape the future of our beloved community.

Sponsors are needed to continue providing the business community the programs and initiatives enjoyed.

Get ready for a night of glamour, recognition, and heartfelt tributes as we gather to honor the exceptional individuals and businesses that have made a lasting impact on our beloved community. The Great Bend Chamber of Commerce proudly presents the Annual Awards Ceremony, an event designed to shine a spotlight on the outstanding contributors to the growth and prosperity of Great Bend.

Event Highlights: Immerse yourself in an atmosphere of appreciation as we acknowledge the remarkable achievements of businesses and individuals who have played a pivotal role in shaping the success story of Great Bend.

Unveiling the Unsung Heroes: Presented by Spectrum CPA and the University of Kansas Health System, this year's recognitions go beyond the surface to recognize the quiet champions who work tirelessly behind the scenes to make a positive difference in our community. Prepare to be inspired by their stories of dedication, selflessness, and commitment.

Murphy Tractor Celebrates Employees



Murphy Tractor & Equipment Co. celebrated two employees at their recent Christmas party. Randy Strickland and Gene Wondra were recognized for their years of service at Murphy Tractor. Strickland has 40 years of service while Wondra has 35 years. Photo courtesy of Great Bend Post.



QUALITY INTERNET SERVICE

with **EVEN BETTER QUALITY CUSTOMER SERVICE**

STAY CONNECTED CONFIDENTLY.



Get started with 

3700 10th Street, Great Bend



THE UNIVERSITY OF KANSAS HEALTH SYSTEM

Committed to Caring for the Great Bend Community

Providing the Great Bend community greater access to the resources of the only academic health system in Kansas. Together, we are committed to ensuring the continued well-being of this community, close to home.

kansashealthsystem.com/greatbend

Ribbon Cuttings!

The Beauty Bar relocates to renovated Main Street building



Discover the perfect blend of elegance and style at The Beauty Bar Salon and Perfectly Paisley Boutique, now situated at 1409 Main Street in the heart of downtown Great Bend. Acquiring the building in 2020, Lexie Schneider, Beauty Bar owner, alongside her husband Derik (Kansas Pro Wash), devoted the last 2.5 years to the meticulous renovation of this downtown gem. Overcoming the challenges of a pandemic and embracing the joys of parenthood with two children later, Schneider cut the red ribbon in November, marking the completion of a project that transformed the space to accommodate the flourishing salon and boutique. The building was further adorned with a new awning, courtesy of a well-deserved facade grant from Barton County.

Celebrating a decade in the realm of business ownership, Lexie Schneider expressed her gratitude during the ribbon-cutting ceremony,

publicly acknowledging the unwavering support of her husband, family, and friends. For Schneider, the realization of this dream, coupled with the pride of owning a business downtown, signifies a journey spanning over a decade.

Perfectly Paisley Boutique, under the ownership of Charise Oelger, adds a unique retail presence within the establishment, offering patrons a fusion of full-service salon experiences and a retail haven. The venture into this beautifully revamped space was made possible not only by Schneider but also by the skilled stylists at Beauty Bar, including Amy Schwager, Janet Galan, and the latest addition, Maria Villanueva. Villanueva brings her expertise in cutting-edge Neurotoxin Treatments and rejuvenating Chemical Peels, enhancing the salon's offerings.

Ensuring a complete experience, the salon boasts a thoughtfully curated retail selection featuring an array of renowned brands. Lexie Schneider, in a commitment to her clients, announced during a Chamber Coffee event that she would price match products found at popular big-box beauty stores like Ulta.

Connect with The Beauty Bar and Perfectly Paisley Boutique on Facebook. Online scheduling, day or night, is available. Join them on a journey of beauty, style, and community in the heart of downtown Great Bend.



Outlook Business Journal

A monthly publication of the

GREAT BEND

CHAMBER OF COMMERCE

1125 Williams,
Great Bend, KS 67530
Phone: 620-792-2401
Fax: 620-792-2404
www.greatbend.org

EXECUTIVE COMMITTEE

Chair
Robert E. Bauer, Bauer Pike Law
Vice Chair
Scott Dewerff, KanEquip
2nd Vice Chair
Jessica Milsap, MPIRE Realty Group
Immediate Past Chair
Shelly Peacock, Insurance Planning
Treasurer
Barry Bowers, Spectrum CPA Partners

BOARD OF DIRECTORS

Joe Andrasek
Damm Pipe Testing
Wally Eldridge
Eldridge Fencing
Jeremy Elliot
myLawn! Turf & Tree
Chuck Fellhoelter
People's Bank and Trust
Mike Johnson
M and M Equipment Company
Matt Kurtz
Identifications
Sarah Panning
Nex-Tech Wireless
Shawn Powelson
Equity Bank
Mike Ruddle
Doonan Specialized Trailer
Flor Sanchez
Heart of Kansas Family Healthcare
Nikki Seybert
Venture Corporation
Cammie Vaupel
American Plains Co-op
Jim Vopat
Edward Jones
Kenda Werth
University of Kansas Health System

EX-OFFICIO

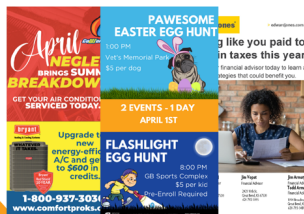
Sara Aramberger, Great Bend Economic Development
Tory Marie Blew, Designated Legislator
Lindsey Bogner, Ambassador Club
Christina Hayes, Convention & Visitors Bureau
Dr. Carl Heilman, Barton Community College
Shawn Hutchinson, Barton County Commission
Kaitlin Sill, Barton County Young Professionals
Khris Thexton, USD 428

CHAMBER STAFF

Megan Barfield, President/CEO
Ashley Hickman, Office Manager
Jaimee Beckwith, Member Engagement Specialist
Julie Mazouch, Office Assistant

Advertise Your Business Here!

Display Advertising Monthly Color Ad (2.75" w X 5" h)
8 Print Issues Available + 4 Digital Issues w/ Links
\$150 Per Month



To Reserve Your Monthly Color Ad: Marketing@greatbend.org
Or Scan the QR Code for More Information



GREAT BEND
CHAMBER OF COMMERCE

Barton County Fair Assn Receives \$10K



The Barton County Fair is pleased to announce that they are the 2023 fourth quarter recipients of \$10,000+ in charitable donations from members of the 100+ People Who Care in Barton County group.

to our community, and a venue that can be utilized and rented for personal use. They have updated electrical hook ups for camping on the fairgrounds and have refreshed buildings with paint using their own minimal funds. The monetary gift provided by the 100+ People Who Care in Barton County will allow the fair to purchase updated tables and chairs for personal and family events held in Expo 1 and 2. Funds generated by renting the facilities for weddings, class and family reunions, graduation parties, and professional meetings and events, will allow the fair to lease and make needed repairs and updates to the complex.

The fair has also been recognized by the International Association of Fairs and Expositions with 34 awards for their creative themes and programming. The Barton County Fair moved to the Expo complex in 1992, and recently undertook the large responsibility of caring for this complex. Staffed by a small group of dedicated volunteers, the Barton County Fair began brainstorming events and activities which will provide funds for the upkeep and monthly maintenance fees for these buildings, which are a valuable resource in encouraging vendors and events to come

To learn more about the Barton County Fair please visit their website at <https://www.bartoncountyfair.com/> and be sure to like the organization's Facebook page.

Chamber organizes food drive

The dozens of food items donated by community business people during the December 14th Great Bend Chamber Coffee filled two tote boxes, but that was only a portion of what will go to area food pantries. Chamber President Megan Barfield said she'd received about \$1,000 in donations during the week from the business community.

"This came about from chamber board members wanting to give back, so we organized a food drive for our annual Board/Ambassador/Young Professionals end-of-year celebration held on December 5th.

We decided to extend it through a Chamber Coffee "Food Drive Edition," Barfield said.



THE FACTS ABOUT RADON

...AND WHY SHOULD YOU CARE.

HEALTH IMPACT OF RADON
Radon exposure is responsible for 20,000 lung cancer-related deaths annually, making it the #2 cause of lung cancer, second only to smoking.

SOIL RESPIRATION
Radon gas respirates through the soil and its relatively harmless once released into the atmosphere.

WHERE DOES RADON COME FROM?
Radon is the by-product of uranium, a naturally occurring radioactive element, breaking down in the soil.

SEASONAL SPIKES
Radon levels spike during colder months when windows are kept closed, preventing heat (and radon) from escaping.

RADON

WHAT THE NUMBERS MEAN
Radon is measured in picocuries per liter (pCi/L). But what does that mean for your health? Here are some examples:

2.5 CIGARETTES EACH DAY

The equivalent radiation exposure of 11.0 pCi/L in your home.

100 CHEST X-RAYS

is the equivalent radiation exposure of 4.0 pCi/L. Hospitals try to limit patients to fewer than 4 x-rays per year.

<p>WHO Recommended Action Level</p> <p>2.7 pCi/L</p>	<p>EPA Recommended Action Level</p> <p>4.0 pCi/L</p>	<p>Average Radon Level in Kansas</p> <p>6.0 pCi/L</p>
---	---	--

HIGHLIGHTED EVENTS IN JANUARY

- 1... HAPPY NEW YEAR!
- 1... American Legion Post 180 Hamburger Night, 1011 Kansas, 5:30 PM
- 4... Chamber Coffee: Ambassador Club, Hatchet Axtion, 1210 Main St, 9:00 AM - 10:00 AM**
- 5... Mac Gun and Knife Show, 3111 10th St, 8:00 AM
- 6... Mac Gun and Knife Show, 3111 10th St, 8:00 AM
- 7... Great Bend Community Theatre Auditions, Crest Theatre, 1905 Lakin Ave, 2:00 PM - 3:00 PM
- 8... Great Bend Community Theatre Auditions, Crest Theatre, 1905 Lakin Ave, 7:00 PM - 8:00 PM
- 11... Chamber Coffee: Iron Therapy Training, 3121 10th St, 9:00 AM - 10:00 AM**
- 11... Ribbon Cutting: Family Crisis Center, 1924 Broadway Ave, 10:30 AM**
- 12... VFW Post 3111: Karaoke Night, 504 Washington, 9:00 PM - 1:00 AM
- 13... Beat the Winter Blues Sale, Participating Businesses, 5:00 PM
- 18... Chamber Coffee: Insurance Planning, 1901 12th St, 9:00 AM - 10:00 AM**
- 21... VFW Post 3111: Brunch, 504 Washington, 9:30 AM - 12:00 PM
- 21... Kansas Day
- 25... Chamber Coffee: Central Kansas Christian Academy, 215 McKinley St, 9:00 AM - 10:00 AM**
- 26... American Legion Argonne Post 180: Fried Chicken Friday, 1011 Kansas, 5:30 PM - 7:00 PM
- 26... BCYP Mixer: Kick Some Axe, Hatchet Axtion, 1210 Main St., 6:00 PM**
- 26... Military and First Responders Night Out, 916 Williams, 6:00 PM - 8:00 PM

Recurring Events:

Great Bend City Council Meetings, 1st & 3rd Mondays, City Hall, 1209 Williams, 6:30 pm
 Barton County Commission Meetings, Wednesdays, Barton County Courthouse, 1400 Main St, Rm 106, 9am.

Visit greatbend.org/events/calendar for a full list of great events!

STAY INFORMED AT GREATBEND.ORG

GREAT BEND

CHAMBER OF COMMERCE

WELCOME
 to Our *NEWEST*
 Chamber Members

SAVING FACE AESTHETICS LOUNGE

Elle Slater, Owner
 (620) 786-1432
 1108 Main St. | Great Bend, KS
savingfaceaestheticsgb.com
Skincare

JOHN & SHARON JACKSON
 Great Bend, KS
Retired

QUEEN BEE'S NUTRITION

Ashley Lamon, Owner
queenbeesnutation@gmail.com
 (620) 786-1432
 2401 10th St. | Great Bend, KS
Health Food, Vitamins & Herbs

New?

Submit Your News Here!



No formal press release? No communications department? No problem! Simply scan and let us know what's going on in your business, and we'll do the rest!

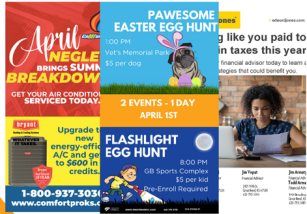
GREAT BEND
 CHAMBER OF COMMERCE

ADVERTISE YOUR BUSINESS WITH US

Great Bend organizations handing out 300 more pounds of deer meat

Advertise Your Business Here!

Display Advertising Monthly Color Ad (2.75"w X 5"h)
8 Print Issues Available + 4 Digital Issues w/ Links
\$150 Per Month



To Reserve Your Monthly Color Ad: Marketing@greatbend.org
Or Scan the QR Code for More Information



GREAT BEND
CHAMBER OF COMMERCE

CHAMBER COFFEE 2023



Reserve Your Spot Today!

Email: marketing@greatbend.org
For more information!



The first Trophies to the Table event outside Great Bend High School was a success. Despite cold rains on Nov. 20, it took volunteers just about 12 minutes to hand out 200 pounds of deer meat to local families in need. Trevor Olsen, a realtor with MPIRE Realty and co-owner and guide at Kansas Trophy Experience, said round two is coming Wednesday.

“We really wanted to see it happen again before the holidays,” he said. “The first one was just before Thanksgiving, so the timing worked out perfectly. This one being right before Christmas, I don’t know how else say it other than it warms our hearts that we’re able to provide for that.”

Aaron Andrews with MPIRE had approached Olsen with the idea. Out-of-state hunters are not always able take all the meat they harvest. Instead of giving the extra meat to friends and family, the idea was hatched to give it to the needy. The hunters also donate

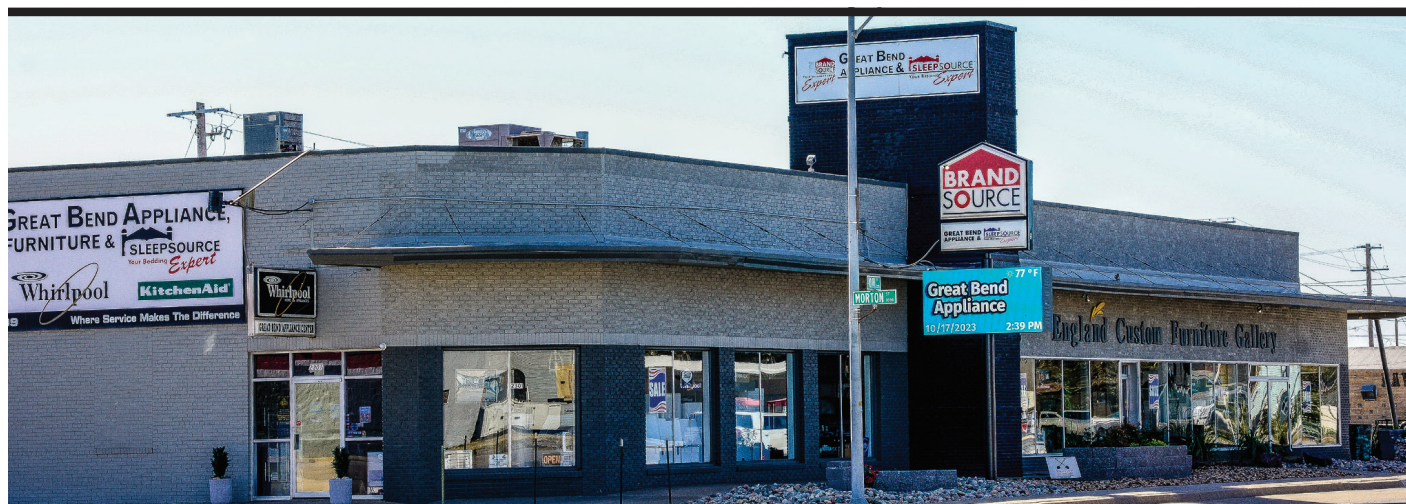
money to have the meat professionally processed. B&B Quality Meats in Larned handled the first batch. Ellsworth Packing handled the latest giveaway.

“We had first started with B&B out of Larned,” Olsen said. “They had to stop taking deer so we were left to go find another professional processing place to handle the deer meat. We were led to Ellsworth. Those kind people were able to turn around 300 pounds in about three days for us. That was a huge deal!”

The ground venison and pork blend will be handed out in frozen one-pound packages on the north side of Great Bend High School beginning at 3:30 p.m. Wednesday. Families are asked to drive east down 21st Street to receive the food. More giveaways are planned in the future.

Story and photos courtesy of Great Bend Post.





Great Bend Appliance Receives Dealer of the Year Award at BrandSource 2023 Convention

Honored for commitment to excellence in the retail industry

NASHVILLE – Great Bend Appliance of Great Bend, Kan., was named the 2023 BrandSource Dealer of the Year for the Great Plains Region at the BrandSource National Convention & Expo, held Aug. 27-30, 2023, at the Gaylord Opryland Resort & Convention Center in Nashville. Owners Dale and Sherry Pruter were honored at the buying group's awards ceremony, which was a highlight of the annual show.

The Pruters launched Great Bend Appliance in 1998 after Sears closed the couple's Appliance and Catalog Store. Following a five-year stint with an area appliance shop, Whirlpool recruited Dale to open a brand-exclusive store in Great Bend, and along with Sherry and two employees Great Bend Appliance was born.

Since then, the 1,300-square-foot showroom has mushroomed into a city-block-long home-goods emporium featuring bedding,



furniture, TVs, grills, space heaters and, of course, appliances, and a staff of 21 dedicated employees.

The Pruters attribute much of the company's success and dramatic expansion to their membership in BrandSource. The dealer-owned cooperative provided the couple with a turn-key mattress program that offered easy entrée into the category and, at one of the group's bi-annual trade shows, led them to a similar opportunity in furniture. "We were a BrandSource dealer from day one," Dale said, "and adding a SleepSource showroom was one of the best decisions we ever made."

The BrandSource Dealer of the Year awards are presented annually to members like the Pruters who have demonstrated a continued commitment to excellence in the retail industry and to their fellow BrandSource dealers. The winners, who are selected by the members within each of the group's 14 regions, must also show their support of BrandSource and its vendor partners by attending regional meetings and national events such as the annual Convention and Summit.

A hearty congratulations then to Dale and Sherry Pruter of Great Bend Appliance on being named a BrandSource Dealer of the Year.

Love is in the Air with Identifications Co.'s Valentine's Day Promotional Products

In preparation for the season of love, Identifications Co., proudly announces its exclusive Valentine's Day Promotional Products! Hand-selected by us!



With a small array of captivating products, Identco is geared up to assist businesses, non-profits, and more in showing appreciation to their valued customers and patrons.

"Looking to send heartfelt tokens this Valentine's Day? Identco has your back! Our suppliers are stocked with the hottest promotional products of the season," shared Edith Solorzano, ASI Distributor. "From endearing postcards to elegant boxes of eternal roses, we have just the right fit for our customers! Whether you're a big corporation or a small start-up, we've got you covered!" Edith emphasized, "Not limited to grand gestures, our selection caters to any sentiment you wish to convey. We make sending a touch of appreciation as effortless as possible."

Looking to stay ahead? Remember, delivery and design take time! Contact us at identificationsmediagroup@gmail.com or call the shop at (620)792-5043. Want to look beforehand? Check out our exclusive website for all our products! identcopromo.espwebsite.com.

"Don't worry if Valentine's Day isn't your focus! Wanting to replenish customized stickers, logo branded pens, or sticky notes? We've got you covered year-round," assured Edith. "Our dedication spans beyond a single occasion, ensuring we're here to fulfill your branding requirements throughout the year." Important Note: Orders are subject to minimum order quantity (MOQ), which may vary per supplier.

Heart of Kansas earns award for diabetes treatment

Heart of Kansas Family Health Care, 1905 19th, has been recognized as one of only three community health centers in the state to earn a Quality Award for its care and treatment of patients with diabetes.

The award from the Community Care Network of Kansas for Diabetic Clinical Quality noted that 81 percent of Heart of Kansas diabetic patients has an A1c below 9. The national average is 69.6 percent, while the Kansas percentage is 71.4.

Hemoglobin A1c is a blood test that indicates average blood glucose during the previous four months.

"Heart of Kansas providers use a holistic approach to caring for our diabetic patients," said Jean Pringle, MD. "This starts with the patient learning about and understanding diet and exercise recommendations.

"Then, we work on how to do glucose testing and use that information to improve control of the disease. Our knowledgeable nurses help patients with the new continuous glucometer monitoring, while offering whatever support patients need to reach their healthcare goals."

In addition, Dr. Pringle noted, Heart of Kansas offers same-day appointments if diabetic patients are facing difficulties. This includes help in getting medications through either patient assistance from pharmaceutical companies or a special medication program available to federally qualified health centers.

"We also have nursing appointments to teach patients how to give injections," Dr. Pringle said. "We spend a lot of time during these appointments to review medications and assure patients are making proper adjustments in their care.

"Heart of Kansas is fortunate to have programs that give our diabetic patients access to medications at affordable prices," she

continued. "Our providers want patients to enjoy the benefits of good diabetic management, which also entails addressing the social and economic challenges that patients face."

A1c, diabetes information

The A1c test provides additional information from just a finger-stick glucose reading. It is a proven marker that can be used to decrease the risk of complications.

"The goal of the test does vary, depending on how long someone has had diabetes and if they have problems with low glucose," Dr. Pringle commented. "However, the starting point is always an absolute A1c of less than 9. But that is not the ultimate goal; we aim for under 7. For someone young and newly diagnosed, even tighter control is ideal."

Diabetes is usually asymptomatic but once glucose reaches a high level, symptoms may include frequent urination, excessive thirst, blurry vision, fatigue and recurrent infections, especially yeast infections. The patient may also be more at risk for dental cavities.

"The disease, for the most part, is genetic," Dr. Pringle noted. "However, a patient's environment can have an effect. This includes poor diet and obesity. Risk factors are family history, chronic corticosteroid use and obesity, especially when most of your weight is on your belly."

Heart of Kansas Family Health Care is a Federally Qualified Health Center, which allows it to be a safety net for patients who are uninsured or underinsured. Its professional providers also welcome those with insurance at the Great Bend, Larned and Stafford locations. Heart of Kansas is open to everyone. CONTINUED PG. 9

THREE CITY EMPLOYEES GET CREDENTIALIAED BY KU PUBLIC MANAGEMENT



The City of Great Bend is thrilled to announce the graduation of three employees from the Kansas University Certified Public Management Program (CPM). The employees that graduated last Friday, December 1st include Jason Cauley – Public Works Director, Sreehitha (Hitha) Kadiyala – Assistant City Engineer and for the Law Enforcement Leadership Academy (LELA) division of CPM was Heather Smith – Lieutenant of the Detective Division.

The CPM Program is a nationally accredited management and certification program committed to developing exceptional public managers. The Heartland Certified Public Manager® (CPM) program is the flagship program at the KUPMC and provides professional development for public service professionals in Kansas and Missouri. This is a 300-hour course for professionals in federal, state, or local government that provide public services and meet community needs.



The LELA is a similar program strictly geared toward law enforcement professionals and issues. This course includes a personal capstone project that ultimately works on a real issue within their organization.

City Administrator Brandon Anderson said, “We are so proud of our CPM graduates! I’m a big promoter for helping our leaders lead through effective management practices and this certification is the best of the best for our state. On behalf of myself, city council and staff we wish a big congrats to Jason, Hitha and Heather for their accomplishment!”

For more information on the CPM program visit the website: <https://kupmc.ku.edu/programs/cpm> Great Bend intends to host this class in 2025 for interested leaders.



The Heart of Kansas Family Health Care team has been recognized for its treatment of diabetic patients.

Front row, from left to right, are: Jeanne Habash, PA; Charise Oelger, PA; Maria Villanueva, ARNP; and Kathy Nokes, ARNP.

Top row, from left to right, are: Arika Fanshier, Shelly Pavlu, Kara Keenan, and Jenny Manry, all ARNPs; and Jean Pringle, MD.

Not pictured are Melanie Emily and Michelle Van Der Wege, both DNPs.



BARTON COMMUNITY COLLEGE ANNOUNCES FINALISTS FOR PRESIDENT

Barton Community College is pleased to announce the final two candidates in the search for the College's next president. The search began in September when Dr. Carl Heilman announced his retirement effective June 30 after providing leadership for seventeen years

The search committee, chaired by Board of Trustees Chairman Mike Johnson, including members of College administration, faculty, staff, and a handful of residents of Barton County, conducted virtual interviews last week with four semi-finalists before selecting the final candidates.

"The search committee is excited to move onto this final step in the selection process," he said. "We look forward to continued conversations with both of these outstanding finalists and to share their vision of the future of the College with the Barton community."

The presidential finalists are (in alphabetical order):

Dr. Seth Carter

Dr. Carter has served as the president of Colby Community College (CCC) in Colby since March 2015. During his nine years at CCC, he led improvements in student outcomes, providing the highest outcomes among community colleges in the state and nation. He helped increase the college's fiscal responsibility by developing capital outlay and financial reserves. He also worked diligently to foster positive relationships with the local community and state stakeholders while creating a collaborative campus culture focused on a student-centric approach to decision-making.

Before joining the leadership at CCC, he served as the Associate Director for Career and Technical Education for the Kansas Board of Regents (KBOR). Dr. Carter earned his doctorate of education from Baker University, his master of science from Pittsburg State University, and his bachelor of arts in communication studies from Emporia State University. He also holds associate of arts degrees from CCC and Allen Community College.

Dr. Marcus Garstecki

Dr. Garstecki has over 25 years of higher education experience in various roles, including 15 years in senior leadership. He is the chief enrollment management officer at Northern State University (NSU) in Aberdeen, S. D., where he collaborated with leadership to enhance student recruitment efforts and develop strategies for leveraging scholarship dollars to increase enrollment. He also led the implementation of the college's first comprehensive enrollment plan that led to enrollment growth for first-time freshmen, transfer, and graduate students and an improved retention rate. Before NSU, he served as executive vice president for campus operations and vice president for student affairs and enrollment management at Presentation College.

Dr. Garstecki earned his Ph.D. in education and human resource studies from Colorado State University, his master of science in physical education from the University of Nebraska-Omaha, and his bachelor of science in physical education from the University of Wisconsin-Whitewater.

Arrangements are underway for the finalists to visit the Barton County and Fort Riley campuses the week of January 15. Open forums will be planned for College administration, faculty, and staff. Public meetings will be scheduled for residents of Barton County to meet both finalists. Details for meetings will be announced in early January upon finalization of the details.

A special Board meeting is tentatively scheduled for Jan. 30 for approval of Barton's sixth president. For more information, visit bartonccc.edu/presidentsearch.

Kick Some Axe with YP on Jan. 26th!

Are you looking for an adrenaline-pumping experience that combines thrill, skill, and a whole lot of FUN? Look no further! Join the Barton County Young Professionals for the most epic night of "Kick Some Axe"

This event hosted by Hatchet Axtion is the perfect excuse to get out and test your skills at axe throwing

Participants can enjoy access to the axe throwing lanes, a free drink ticket from the host, and plenty of snacks. Join us Friday, January 26, 2024, at 6pm at Hatchet Axtion in Great Bend.



**GREAT BEND
Rec**

FITNESS CLASSES

ENROLLING
NOW

greatbendrec.com
1214 Stone Street
620-793-3755

New Hire?
New Service?
Submit the
NEW Here!

SCAN ME



No formal press release? No communications department? No problem! Simply scan and let us know what's going on in your business, and we'll do the rest!

CHAMBER/CVB/ECO DEVO UNITE FOR COLLABORATIVE MEETING & ASK GBK

The Great Bend Chamber of Commerce, Great Bend Economic Development, and the City of Great Bend Convention & Visitors Bureau are thrilled to announce a collaborative meeting aimed at fostering synergy and collective growth within the community.

The meeting was held among staff members on Dec. 13th at the Great Bend Chamber of Commerce to explore innovative ways to enhance the vibrancy and prosperity of Great Bend. The meeting was a platform for open dialogue, idea exchange, and planning for the new ASK GBK rollout. ASK GBK is the newest service introduced to Great Bend and its surrounding communities, aiming to elevate customer service standards through collaborative efforts to deliver accurate and timely answers to the inquiries of our residents and visitors.

“We believe that by joining forces, we can leverage our collective strengths to propel Great Bend to new heights,” said Megan Barfield, President of the Great Bend Chamber of Commerce. “This collaborative effort is a testament to our commitment to the growth and well-being of our community.”

The meeting aimed to establish a foundation for ongoing collaboration, ensuring that the combined efforts of the Chamber, Economic Development, and Convention & Visitors Bureau continue to positively impact the economic landscape and quality of life in Great Bend.

“We recognize the power of collaboration in driving economic success and community development,” stated Sara Arnberger, President of Great Bend Economic Development. “This meeting is a significant step towards harnessing that power for the benefit of our residents, businesses, and visitors.”

This trio of organizations will continue meeting to share key takeaways and outline the next steps in the collaborative journey.

“I just love the effort, time and commitment we are giving to each other, and this ASK GBK process – it’s just one more way we can provide the best customer service in Great Bend!” stated Christina Hayes, Convention & Visitor Bureau Director & Community Coordinator.

In the initial phase of the Ask GBK initiative, the team introduces the now available askgbk@gmail.com

email address, overseen by dedicated staff members from each participating organization. This allows residents and visitors to submit questions about any topics they may be unable to find answers to through existing resources. Moving into Phase 2, the launch of the askgbk.com website, scheduled for release by the end of January. The Great Bend community is invited to join the conversation on social media by using the hashtag #AskGBK. For more information email askgbk@gmail.com.



Pawnee Valley Community Hospital Receives National Quality Award



Compiled by the Chartis Center for Rural Health, the Performance Leadership Awards honor top quartile performance (i.e., 75th percentile or above) among rural hospitals across our Nation.

“Our hospital’s history is rooted in rural healthcare, and our future is committed to ensuring our community has access to high-quality care,” said Melanie Urban, Administrator. “Living in a rural community should never mean that our residents are sacrificing quality health care. Every member of our Pawnee Valley team is devoted to providing high-quality care. This recognition validates their efforts and drive as high-quality care is a commitment we prioritize.”

On November 16, Pawnee Valley Community Hospital (PVCH) in Larned was recognized with a 2023 Performance Leadership Award for excellence in Quality. This recognition is PVCH’s third consecutive year to receive the national quality recognition

The Performance Leadership Awards are based on the results of the Chartis Rural Hospital Performance INDEX®, the industry’s most comprehensive and objective assessment of rural hospital performance across several areas impacting hospital operations and finance.



CELEBRATING OVER **58** YEARS
OF SERVING PEOPLE WITH
DEVELOPMENTAL DISABILITIES!

There is a Difference.

- EARLY EDUCATION
- CASE MANAGEMENT
- DISABILITY SUPPORTS
- RESIDENTIAL ASSISTANCE
- COMMUNITY EMPLOYMENT
- RECYCLING & MANUFACTURING
- GENERAL PUBLIC TRANSPORTATION
& MUCH MORE!

620-792-1325

WWW.SUNFLOWERDIV.COM



CHAMBER COFFEE SCHEDULE

Every Thursday | Doors Open at 9am | Program at 9:30am

January 4th **AMBASSADOR CLUB** Hatchet Axtion | 1210 Main St.

Come meet the 2024 Ambassador Club on Thursday, January 4th for the FIRST Chamber Coffee of 2024! Lead by Ambassador President Lindsey Bogner (Barton Community College Foundation) and Vice President Kris Sundahl (Edward Jones), the Great Bend Chamber of Commerce Ambassador Club is a group of leaders within their industries and community who volunteer for their chamber.

January 11th **IRON THERAPY TRAINING** 3124 10th St.

Aaron and Ashley Raney have a passion for helping busy working professionals transform their lives so they can get their health and life back on track. Iron Therapy Training invites you into their brand new location at 3124 10th St. Here you will see their renovations and a gym ready to transform your life. Their trainers are excited to meet you and show off the new gym!

January 18th **INSURANCE PLANNING INC.** 1901 12th St.

Meet Shelly Peacock, agent at Insurance Planning's Great Bend office. IPI is an independent insurance agency with offices in Great Bend, Hays and Russell. The Great Bend office specializes in commercial insurance for businesses (Work Comp, Liability, Commercial Auto, Property, etc).

January 25th **CENTRAL KANSAS CHRISTIAN ACADEMY** 215 McKinley St.

Central Kansas Christian Academy is a non-denominational community Christian school which provides an exceptional educational opportunity for children in Kindergarten through the 8th grade. Our strong curriculum not only promotes learning, but also growth in the student's Christian spirit. CKCA combines Christian character training with an excellent academic program that we believe will build a strong foundation for your child's future.

February 1st **BARTON COUNTY YOUNG PROFESSIONALS** Great Bend Chamber of Commerce 1125 Williams St.

The Barton County Young Professionals is excited to announce the 2024 Steering Committee members along with exciting changes and opportunities. Attend this Chamber Coffee to hear more from the 2024 President, Callie Miller (Housing Opportunities Inc) and Vice President, Kaitlin Sill (Adams Brown).

CHAMBER
COFFEE 2023



Reserve Your Spot Today!

Email: marketing@greatbend.org
For more information!



3307 10th Street • Great Bend, KS 67530

McDonald's

is providing coffee for Chamber of Commerce coffees.