

A MONTHLY PUBLICATION OF THE
GREAT BEND CHAMBER OF COMMERCE

business journal

1921



YEARS 2021

Gift Certificates keep money local

With the holiday upon us, the chamber has a message for businesses, retailers, and gift givers:

Keep it Local with Chamber Gift Certificates!

Pro Tip! Ask for certificates in smaller increments (Yes, we can do that. Yes, it's still free.) allowing the holder to spread their spending across multiple stores!



BUSINESSES & GIFT GIVERS ALIKE

Interested in showing appreciation to your staff? Unsure of what to get your in-laws, kid's teacher, hairdresser? Think Chamber Gift Certificates! Leave the Visa and box store gift cards on the rack. Purchasing Chamber Gift Certificates in lieu of, guarantees your dollars will stay local!

Whether you're purchasing one or 1,000 (Yes, we've had orders of a thousand or more gift certificates at one time!), we've made it simple. Plus, there is no fee or extra activation cost required for purchase.

Our business hours are 9 a.m. to 3 p.m. Monday through Friday.

RETAILERS – We want to help you CASH IN!

Over \$150,000 in certificates are sold annually with 25% of those sales happening during the holiday months. Remind shoppers to spend their gift certificates with YOU!

- Gift Certificate Participant Badge: Post this badge to your social media pages and your website. We've also added it to

Ways to Purchase:

- Visit greatbend.org/gift certificates and order online.
- Call (620) 792-2401.
- Email gbcc@greatbend.org.
- Stop in and see us at 1125 Williams St. Great Bend.



Scan for Badge Download



- your online membership listing.
- Gift Certificates Redeemed Here Plaque: Display your plaque near your point-of-sale system and/or the entrance. Need a new or extra

Continued on page 9



here for you

WE DO I.T.

CLOUD
INFRASTRUCTURE
MANAGED IT
SECURITY

nex-tech.com/business • 800.588.6649



THE UNIVERSITY OF
KANSAS HEALTH SYSTEM

Committed to
caring for the
Great Bend
community.

Providing the Great Bend community greater access to the resources of the only academic health center in Kansas. Together, we are committed to ensuring the continued well-being of this community, close to home.

kansashealthsystem.com/community

Join Spectrum in their 5th year of collecting supplies for Operation Christmas Child

Operation Christmas Child is a project of Samaritan's Purse, an international relief organization. Their mission is to provide local partners around the world with boxes filled with toys, school supplies and hygiene items for children affected by war, famine, natural disaster or poverty. The boxes travel around the world and within the United States.

This is the 5th year that Spectrum CPA Partners, LLC, has collected supplies for the boxes. With help from several generous donations, they have packed 60 boxes for delivery. The boxes will be taken to a local church next week, and then sent on for worldwide distribution.

Spectrum CPA collects donation year-round in their office for Operation Christmas Child. If you

would like to help donate items for the boxes or cash, please feel free to stop by

their office at 1400 Polk in Great Bend, or call (620) 792-5378.



MPIRE teams up with GBFD

MPIRE Properties is proud to once again team up with the Great Bend Fire Department and distribute smoke detectors to 6th grade students at each elementary school in Great Bend!

Thank you to Mike Smith, GBFD Fire Inspector, and the entire Great Bend Fire Department for their continued efforts year-

after-year educating students on fire safety and prevention! Pictured left to right: Tokiwa Elkins, MPIRE Properties, Amanda Staab/MPIRE Companies,

Mike Smith/Fire Inspector, Skyler Edwards/Great Bend Fire and EMS, Shawna Prilling/MPIRE Properties, and Toby Hogan/MPIRE Companies.



Star of Hope continues year-round mission work

After 52 years, Star of Hope continues to work with the same God-given passion for providing education, food, social development, and the Gospel to children and their families. Every year Star of Hope Relies on gifts from generous donors to continue its mission outreach in 8 third-world countries.

The Star of Hope Christmas Giving Guide is included in this month's Chamber mailing. Look for it! It is just a small representation of the items you can purchase. Our online Christmas Shop has 24 items available. The items in the Christmas Giving Guide are desperately needed, but the variety found online might be more exciting to look through and choose.



Go to starofhope.us/shop to see the complete gift list.

Goats and Chickens are a gift option for a child and are in the "Pay it Forward" program. Eggs from the chickens and milk from the goats bless day after day. The first offspring from each goat is given to another child, thus the "Pay it Forward" concept. Chickens and Goats continue to give hope by changing lives immediately and as more troubles come.

Star of Hope's COO Maria

Presson says, "For most of my life I have seen the positive impact generous giving has had on the families and communities we serve.

The Christmas celebrations I have had the privilege to join always overwhelm me as the people's gratitude overflows. Thousands of children and families are richly blessed by being recipients of Star of Hope's support."

When Star of Hope's local teams deliver these life-changing gifts, they get to personally experience the hope and gratitude in the children's eyes. Real change comes through generous contributions.

This Christmas, give hope to the hopeless through Star of Hope.

Welcoming Cross-Country Bicyclists to Great Bend

Two years ago, K-State Research & Extension - Cottonwood District learned that the Trans America Bike Trail was changing their route and would pass through Great Bend. Since many bicyclists prefer to camp along their way a group of volunteers began developing a campground in the grassy area behind Central Baptist Church, located at Lakin and Harrison. Signage and a bicycle repair station were the first improvements made. The Be Well Barton County task force provided funds to refurbish two picnic tables and add an electric re-charging station. Recently a church member donated a shelter, and another member donated an additional picnic table.

Jason Cauley made and installed a beautiful wooden sign on the shelter that welcomes our bicycle campers. Before they were finished with the installation, a cross country cyclist, Grant, from Oregon, arrived after his day's ride. He was excited to have a shaded place to pitch his tent.

Another big project has been to get a water well dug, to provide potable water for campers. By participating in a community bike ride in July K-State Research & Extension - Cottonwood District made a connection with Delbert Randolph, and his wife, Hope. They were looking for a project that could serve as a memorial to their son, Devin, who lost his life to suicide a year ago. Delbert thought this would be the perfect project for an Eagle Scout candidate, Felix Diaz. Funding for this project came from the Randolphs', and a gift from the Suicide Prevention Task Force, which is part of the Central Kansas Partnership.

Excitement was in the air on October 9th as



the scouts watched the water well being dug. Besides the work that Felix did to get the proper permits needed for the project. the scouts also worked to install a kiosk provided by a Be Well grant. The kiosk will display a map, as well as services available in our community. The plan is to include a QR code to gather information from the cyclists and add emergency phone contacts.

As the season for cross country cyclists is winding down, it is the perfect time to reflect on the riders who have a first impression, (and hopefully a lasting impression) about the community that is positive and inviting.

Outlook Business Journal

A monthly publication of the

GREAT BEND CHAMBER OF COMMERCE

1125 Williams,
Great Bend, KS 67530
Phone: 620-792-2401
Fax: 620-792-2404
www.greatbend.org

EXECUTIVE COMMITTEE

Chairman
Pete Wesner, CUNA Mutual Retirement Solutions
1st Vice Chair
Jerry Renk, American State Bank
2nd Vice Chair
Shelly Peacock, TCI Answering Service
Immediate Past Chair
AJ Chrest, Aflac District Coordinator
Treasurer
Michael Miller, Ronald Miller Public Accounting

BOARD OF DIRECTORS

Glenna Achatz
Coldwell Banker Sell Real Estate
Rich Baskerville
Ambassador Club (First Kansas Bank)
Rob Bauer
Bauer, Pike, Bauer, Wary & Carroll, LLC
Sue Cooper
Barton County / Central Kansas Partnership
Scott Dewerff
KanEquip
Logan Garrett
G-B Tire, Inc.
Randy Goering
Eagle Radio
Ana Hayson
Rana Luna Boutique
Jay Luerman
BCYP (First Kansas Bank)
Teresa Powelson
Golden Belt Community Foundation
Leslie Mingenback
Miss Pretty Pickles / MyTown
Regan Reif
The University of Kansas Health Systems
Douglas Reiser
Central Kansas Surveying & Mapping Inc.
Todd VanSkike
Golden Belt Bicycle Company

EX-OFFICIO

Lindsey Krom-Craven, Great Bend City Council
Christina Hayes, Great Bend CVB
Sara Hayden, Great Bend Economic Development, Inc.
Shawn Hutchinson, Barton County Commission
Dr. Carl Heilman, Barton Community College
Khris Thexton, USD 428
Tory Marie Arnbarger-Blew, Kansas State Legislature

CHAMBER STAFF

Megan Barfield, President/CEO
Lee Ann June, Communications & Program Coordinator
Tayler Stegman, Office Manager

FREE E-WASTE RECYCLING



Does your *residence* or *business* have *electronics* in need of *safe and responsible recycling*?

Computers & Monitors
Printers
Fax Machines
Laptops
Televisions
Video Game Consoles
DVD Players
VCR's & Cameras
Cell Phones
Telephone Equipment
...and More!

DROP-OFF LOCATIONS

Rosewood
Maintenance Building
2200 Main St., Great Bend
Mon - Fri, 9:00 am - 4:00 pm
Rosewood Bargain Barn
1215 Main St., Great Bend
Mon - Fri, 10:00 am - 6:00 pm

By recycling with us, you benefit your community, the environment, and you help create jobs for individuals with developmental disabilities.

You will receive a tax deduction receipt when you drop off unwanted electronics.

Rosewood ecycle
2200 Main St.
Great Bend
South of the Dairy Queen!



CONTACT INFORMATION
(620) 603-8348
www.RosewoodServices.com

The Mission of Rosewood ecycle is to provide work-related training and employment opportunities to adults with developmental disabilities.

Health system expands specialty care in Great Bend

People in the Great Bend region now have more cardiology and orthopedic care available. Two physicians from The University of Kansas Health System in Kansas City come to Great Bend regularly to see patients.

Rigoberto Ramirez, MD, and Bruce Toby, MD, are accepting new patients at St. Rose Medical Pavilion and Central Kansas Orthopedic Group respectively.

Dr. Ramirez is a cardiologist who specializes in electrophysiology, which focuses on irregular heart rhythms. He sees patients for general cardiology care as well as those with heart rhythm concerns.

Dr. Ramirez, who is fluent in Spanish and English, is a Great Bend native and is passionate about caring for people in his hometown.

"I am excited to serve the community that supported me throughout my upbringing," said Dr. Ramirez. "Most importantly, I look forward to offering our Great Bend community additional quality cardiology services through The University of Kansas Health System."

Dr. Toby has been a leader in pioneering

clinical work and research at The University of Kansas Health System in Kansas City.

He recently stepped down from his role as chair of orthopedic surgery and sports medicine there.

He looks forward to continuing his practice with Randall Hildebrand, MD, and the rest of the care team at Central Kansas Orthopedic Group.

"Our community is fortunate to have a physician of Dr. Toby's caliber to provide orthopedic

and surgical services in Great Bend," said Dr. Hildebrand. "His outstanding reputation and legacy of orthopedic surgery is well-known and we are happy to welcome him to Barton County."

Dr. Toby specializes in orthopedics for the hand, wrist, elbow and shoulder, including shoulder replacement surgery. He will see patients every other Thursday beginning Nov. 4 at Central Kansas Orthopedic Group. He will schedule surgeries in Great Bend on the adjacent Fridays.

To schedule an appointment with Dr. Ramirez, call 620-792-2511.

To schedule an appointment with Dr. Toby, call 620-792-4383.



Bruce Toby, MD



Rigoberto Ramirez, MD

Shoe Sensation to host 6th Annual Socks for Troops

Shoe Sensation is collecting socks for members of the Military and local Veterans. Shoe Sensation, a regional chain of name brand family shoe stores, is hosting its 6th annual "Socks for Troops" fundraiser in all of their 200+ retail locations. Last year Shoe Sensation collected over 40,000 pairs of socks and hopes to continue the success of the program in 2021. This year, each store will be collecting socks for active-duty military personnel and/or local veterans in their communities. Shoe Sensation will have military approved socks for customers to purchase and donate in-store. Customers will receive 20% off socks purchased for a donation at Shoe Sensation and a \$10 off \$50 coupon valid on customers' next purchase. Shoe Sensation locations will also serve as a drop off point for customers to bring in new socks they have collected on their own.

"It has been a tough year for everyone in our communities. This is no exception for the country's military personnel. A small gesture can go a long way in providing them with comfort during the holidays.

We appreciate the sacrifices of our armed forces and their families make in their personal lives to protect our safety and our countries interests. This is one way we can show our appreciation to the men and women who serve in our

armed forces and to our Veterans that have served our country," says David Bateman, Community Connections Director and creator of the Socks for Troops program for Shoe Sensation.

"Socks for Troops" will begin on November 1st and Shoe Sensation will continue collecting socks until December 31, 2021. Please see details below or visit your local Shoe Sensation for details on the specific supported charity or organization. For additional information about Socks for Troops or to find a Shoe Sensation near you, visit www.shoesensation.com.

Due to Covid-19 concerns, outside sock donations must be brand new and donated in its original packaging. Shoe Sensation CANNOT accept used pairs of socks or socks without its original packaging.

NEEDING SOME RELIEF FROM ENERGY BILLS?



Get your furnace serviced today to keep it running at peak efficiency



Heating & Cooling Systems

Whatever it takes.



A NEW BRYANT SYSTEM FROM COMFORT PRO CAN SAVE YOU HUNDREDS ON ENERGY BILLS.

CALL NOW: 800-937-3030

HIGHLIGHTED EVENTS IN DECEMBER

1...Barton County Young Professionals, Party with a Purpose, The Fieldhouse and Catalyst Therapy and Sports Rehab, 2817 9th St., 6pm

2...**Chamber Coffee: Heart of Kansas Mercantile, 1212 Main St. in Great Bend, Program at 9:30am on the Chamber's Facebook Page or You Tube Channel**

2...Santa Elves, Great Bend Rec Center, 2715 18th St., 3:30pm

2...**Chamber After Hours hosted by Nex-Tech Wireless, 2827 10th St., 5pm**

4...Kansas Wetlands Education Center Holiday Open House, 592 NE K 156 Hwy, 9am

4...Santa's Workshop Express, A Drive-thru Christmas Experience, Great Bend Rec Center, 2715 18th St., 1pm

4...Thrift Shop Date Night, Encounter Church, 601 S. Patton Rd. 5pm

5...Santa's Workshop - Zoom Version, Dilly & Doc, 1119 Main St, 1pm

6...Santa's Workshop, City Auditorium, 1214 Stone St., 6pm

6...Holiday Concert, Barton Community College, 245 NE 30 Rd, 7:30pm

7...Santa Elves, Great Bend Rec Center, 2715 18th St., 3:30pm

8...Christmas Gift Ceramics, Great Bend Rec Center, 2715 18th St., 3:30pm

9...**Chamber Coffee: People's Bank & Trust, 2220 Broadway Ave., in Great Bend, Program at 9:30am on the Chamber's Facebook Page or You Tube Channel**

9...Santa Elves, Great Bend Rec Center, 2715 18th St., 3:30pm

10-13...My Christmas Tree, Great Bend Rec Center Facebook Photo Contest

10-12...The Best Christmas Pageant Ever, Great Bend Community Theatre, 1905 Lakin Ave., 6pm

10...Special Needs Christmas Dance, Great Bend Activity Center, 2715 18th St., 7:30pm

11...Holiday Cookies and Crafts, Heartland Farms, 1049 CR 390, Pawnee Rock, 1pm

12...Ghosts of Christmas Past, Barton County Historical Society, 85 S 28 Hwy, 1pm

12...Ellinwood Hospital Foundation Christmas Gala, St. Joseph Parish Center, 110 W 2nd St, Ellinwood, 5pm

13...Santa Elves, Great Bend Rec Center, 2715 18th St., 3:30pm

13-17...Member Appreciation Days! See Mail Panel for schedule of events.

15...**MIC Training, Chamber Board Room, 10am, Free**

15...Christmas Canvas, Great Bend Rec Center, 2715 18th St., 3:30pm

16...Gaila Demel, Director of United Way Retirement Party! Dry Lake Brewing, 1305 Main St., 3pm

16...**Chamber Coffee: Golden Belt Community Foundation - Great Charity Giveback, 1307 Williams St. in Great Bend, Program at 9:30am on the Chamber's Facebook Page or You Tube Channel**

20-1/3...USD 148: No School, Winter Recess

20...**Chamber Chat LIVE: What's Up, Great Bend! - Holiday Edition! Virtual, 2pm**

21... Central Kansas Partnership Meeting, Barton County Courthouse, 1400 Main St., 11am

24...**The Chamber Office will be closed for the Christmas Holiday and will reopen on the 27th**

25...Merry Christmas from the Chamber Office Staff!

30...**No Chamber Coffee**

31...**Chamber Office Closed**



Scan for the 2021 Holiday Event Calendar

Recurring Events:

Great Bend City Council Meetings, 1st & 3rd Mondays, City Hall, 1209 Williams, 6:30pm

Barton County Commission Meetings, Every Tuesday, Barton County Courthouse, 1400 Main St, Rm 106, 9am. Visit greatbend.org/events/calendar for a full list of great events taking place throughout the month!

Virtual Chamber Events (Chamber Chat & Virtual Coffees) can be found: via Facebook (www.facebook.com/gbcoc) or YouTube (tinyurl.com/ybepgrt6)

STAY INFORMED AT GREATBEND.ORG

GREAT BEND CHAMBER OF COMMERCE

WELCOME
to Our **NEWEST**
Chamber Members

LIVE LIKE JESUS TODAY MINISTRIES

Bryant "Buzz" Birney, Executive Director

livelikejesustoday@gmail.com
(620) 397-3325
700 S. Patton

Great Bend, KS 67530
livelikejesustoday.com

Non-Profit Organizations / Clubs

SHULL CONSTRUCTION

Deanna Vannoster, Sales and Marketing Manager

(620) 282-5203
deanna@shullroofing.com

1004 Roosevelt St
Great Bend, KS 67530
www.shullroofing.com

Construction

WANT TO JOIN THE CHAMBER?

If your company is interested in joining the Great Bend Chamber of Commerce, fill out the online application on our website: www.greatbend.org. Membership is quick and easy to get started, and it is affordable, too!

You can also sign up to attend one of our Chamber Member Orientation & Marketing Services Seminars. These seminars happen throughout the year. Members are encouraged to send at least one team member to get acclimated and stay up-to-date on the free or low-cost marketing opportunities available through the Chamber.

Sign up on our website:

www.greatbend.org/eventregistration



REMEMBER... USE IT OR LOSE IT

YOUR HEALTHCARE DOLLARS MAY EXPIRE
AT THE END OF THE YEAR!



The end of the year is a great time to invest in new eyewear or contact lenses, especially if your employer's flex plan or cafeteria plan doesn't allow rollover into the next calendar year. **We can help you get the most of your pre-tax healthcare dollars!**

620-792-2020

Open 6 Days a Week
2601 10th Street in Great Bend, KS
10thStreetEyecare.com

Zero Reasons Why gains traction in Hoisington

Jennifer Steinert noticed a basket of yellow bracelets when she stopped by Hope Randolph's office one day at Hoisington High School.

Steinert is the business instructor there and Randolph is the school counselor.

"I asked Hope what the bracelets were for," Steinert recalled. "She explained they are used as tools to raise awareness about teen mental health and suicide as part of the Zero Reasons Why (ZRW) campaign."

"I was immediately inspired by the idea of helping prevent teen suicide and removing the stigma associated with mental-health issues."

As a result, Steinert mentioned the teen-led campaign at the first meeting of her Future Business Leaders of America (FBLA) group.

"I was overwhelmed by the response and



enthusiasm from the students who wanted to become involved. This is a compassionate group of young people.

"I thought a few would want to be involved but about half of the 47 FBLA members are active and more are being added all the time. They have so many ideas to share that I have a hard time jotting them all down."

The reasons for involvement are as varied as the students. "They all have unique life experiences," Steinert noted. "Some may be dealing with mental-health issues of their own or dealt with them in the past."

"Or maybe they know someone who has struggled. They all realize teens have a lot

Continued on page 11

Barton student completes online Medical Lab Tech program to become technician and instructor

Barton alumni and Adjunct Instructor of Barton's Medical Lab Technician (MLT) Program Tyler Brown wanted to be a dental hygienist, or so she thought. After completing Barton's phlebotomy course as a pre-requisite for a hygienist program, she realized she had a new dream.

"Taking that phlebotomy course was the best decision I ever made," she said. "It opened a world for me that I never knew existed, plus opened a door to a trade that I had no clue I would not only love doing but would be good at. Eight years later, I am a medical lab technician at an amazing hospital (Clara Barton Hospital) and am now getting the opportunity to teach others what I love so much at an amazing college."

As a Great Bend native, Brown chose Barton over other four-year programs so she could stay closer to her family and was able to complete the class completely online. She only had to attend clinicals in-person. Barton's program is designed so that people from across the nation can complete the program online and can complete their clinicals at local sites.

MLTs are in high demand. Brown had a job before she even completed the program.

"It's such an important field because we help doctors with the diagnosis and direction of treatment with their patients," she said. "I love the ability to provide great patient care from behind the scenes."

The COVID-19 Pandemic has been challenging for Brown but she said it has not changed the amount of passion she has for what she does.

"Even through all the uncertainty, I have

not loved my job more than I do today," she said. "This pandemic has really put into perspective how important being an MLT really is, in not only providing excellent patient care, but providing diagnoses for our providers."

MLT Program Director Karen Gunther said job outlook and security is extremely positive for technicians and said Brown's experience is typical in that most students have offers for employment before even completing the program.

Gunther said it's important to realize that while MLTs often work in hospitals there are a myriad of possibilities.

"There are just so many job opportunities including research, forensic science, clinical



Barton Adjunct MLT Instructor and Clara Barton Hospital Employee Tyler Brown poses for a photo during a break during one of her classes earlier this semester. MLT classrooms include equipment much like that of a full laboratory setting, which allows students to do real blood draws on each other and examine specimens.



Share the included catalog
with family and staff

www.starofhope.us/shop



New Hires & Promotions:

Norris comes home to take a position at Pawnee Valley Campus

A Pawnee County native has returned to her hometown and is serving the whole community as the new marketing and communications director at The University of Kansas Health System Pawnee Valley Campus.

Marie Norris, a Burdett native, has been getting to know her new colleagues and re-acquainting herself with the community. She recently returned from Fort Worth, Tx., where she earned two degrees at Texas Christian University.

"I am so happy to be home and working at the hospital and clinic," Norris said. "The culture here at Pawnee Valley is great. Everyone is super friendly and supportive in this beautiful facility."

"The hospital is a big part of the solid foundation of Pawnee County. It is an honor and privilege to be here and I am eager to contribute in any way I can."

While her job description is lengthy, the bottom line is "I want to ensure our message is heard throughout central Kansas. We offer a vast amount of services and I want to share this information with local and area media and the entire community."

This includes participating in events such as the recent Larned Area Chamber of Commerce Fall Frenzy and the

Women's Expo in Great Bend. "These were my first events and I look forward to many more," Norris commented.

Norris earned her bachelor's degree in economics with a minor in general business in 2019; she went on to graduate in 2021 with a master's in business administration at TCU.

Melanie Urban, Pawnee Valley Campus administrator, said "Marie is already starting to build relationships in the hospital and throughout the community. She will play a big role in ensuring we do all we can to meet the needs and expectations of our community."



Marie Norris

Linda McCaffrey Joins Museum Staff to Tackle Collections at Historical Society

The Barton County Historical Society is excited to announce that Linda McCaffrey, formerly an instructor at Barton County Community College, has joined the staff to handle the museum's collections. Linda will be working on improving inventorying, and improving the storage conditions of the society's collections. These efforts will not only restructure the storage areas but also bring them up to professional standards.

These efforts are part of a long term plan to address issues within the historical society's collections and allow the museum to realign its acquisition policies. The aim of which is to reorient the museum to a greater focus on Barton County and its rich heritage. Funding for her current position is a result of the SHARPS recovery grant through Humanities Kansas.



Linda McCaffrey

Dr. Rob Miller named Emergency Department medical director at hospital

Rob Miller, MD, has served as Emergency Department (ED) medical director for only a short time but already is "impressed with the resources" at The University of Kansas Health System Pawnee Valley Campus.

Dr. Miller credits this to local healthcare providers and administrators who share their talents and foresight while caring for and treating patients.

"The family-medicine providers at Pawnee Valley Campus are obviously talented and focused on high-quality care throughout central Kansas," Dr. Miller said. "Administrators are constantly working to expand the number of resources available to patients and staff to improve healthcare in the region."

Dr. Miller also fills the role of ED medical director at HaysMed; he has been in that position for four years.

"I am a full-time emergency physician at HaysMed and will start working some part-time shifts at Pawnee Valley Campus this fall," Dr. Miller noted.

"I am impressed with the amount of experience the ED providers at Pawnee Valley Campus have," Dr. Miller commented. "I look forward to working with them in my new role."

"It has been very gratifying for me to be

part of the transformation in the HaysMed Emergency Department," Dr.

Miller added. "For example, we have hired more physicians certified in emergency medicine and I have served on committees to help with quality improvement while refreshing our policies."

"I have heard countless comments from local residents that celebrate the enhanced quality of care. I am excited to see how I can help lead the ED team here in Larned."

Melanie Urban, Pawnee Valley Campus administrator, said "we are excited to have Dr. Miller join our ED. Not only does he bring a wealth of ED experience and leadership to our team, he has a thorough understanding of what it takes to achieve service excellence."

Dr. Miller earned his bachelor's in biology in 2010 at Bethany College and medical degree in 2014 at The University of Kansas. During his KU emergency-medicine residency, he was chief resident from 2016-17.

He also was a LifeStar flight crew physician in 2016-17. He is board certified in emergency medicine.

Dr. Miller was born in Honolulu and moved throughout the United States because his parents were in the military.



Rob Miller, MD

Congratulations!



15% OFF
SENIOR PET
 SCREENING EXAMS
 AND TREATMENTS



Phone: **620-792-5700**
 1905 19th Street in Great Bend, Kansas

**Family Practice,
 Behavioral Health &
 Dental Services**

Preventative Care
 Prescription Assistance
 Diabetes Management
 Evening Appointments
 Open to Everyone
 Bilingual Staff

All Insurance Accepted
 Including Medicare, Medicaid & KanCare

"We Care About Your Health"
www.HeartofKansas.com

Ribbon Cuttings!

Chamber of Commerce welcomes Construction Resolve to the Chamber and commemorates with a Ribbon Cutting



Chamber Ambassador's Club hosted a ribbon-cutting for a new Chamber of Commerce member, Construction Resolve. Andres Mata, Miguel Reyes, and Mario Reyes, Construction Resolve's three partners spoke about the company's experience, services, and the core values of the business. Andres stressed the importance of integrity, commitment, and honesty in working with commercial and residential customers. Construction Resolve is a construction company committed to providing value and solutions to customers, with many years of experience in commercial concrete. They serve the community with dedication and professionalism, welcoming new projects: large or small, commercial, and residential. Construction Resolve serves approximately 200 customers a year in Kansas, Texas, and Oklahoma. To see more from Construction Resolve, check out their Facebook page. Their photos showcase projects from both residential work as well as larger commercial projects. Find more information or contact Construction Resolve, find them on Facebook at @constructionresolve, go online at: constructionresolvellc.com or by calling 620-603-3765.

Kansas Earth & Sky Candle Co. joins the Great Bend Chamber and celebrates with a Ribbon Cutting



Chamber Ambassador's Club hosted a ribbon-cutting at Kansas Earth and Sky Candle Company, 23 N. Main Street in Ellinwood, and welcomed them as new Great Bend Chamber members. Scott and Jennie Andersen, the store's owners spoke to the group about the history of the building, as well as starting as a small wholesale business with one chili pot to melt the wax and growing beyond expectations. Scott spoke about joining the Great Bend Chamber of Commerce, "Being an Ellinwood business since 2016 and primarily running as an online and wholesale / production business, we have yet to formally reach out to Great Bend, so this is an exciting step to welcome the good people of Great Bend to Ellinwood to check out what we are doing on main street Ellinwood!" Find more information at www.kansasearthandskycandle.com, email at order@kansasearthandskycandle.com, or visit the storefront in Ellinwood at 23 N. Main Street.



A SPECIAL MESSAGE from: United Way of Central Kansas Executive Director

Dear Chamber Friends.....

It seems like forever ago that I asked the UWCK Board to accept my retirement announcement and now here it is just a few weeks away from leaving my position. What an incredible honor it has been to serve as the Executive Director for United Way of Central Kansas. Serving the community, connecting people and broadening the scope of finding solutions to current social impact issues, can be challenging during certain times but mostly rewarding in many ways. The relationships that come from being a part of change, of leading the charge on programming and the everyday networking with community leaders is the most humbling gift. The generosity that is shared across the many non-profit agencies in our area is more than humbling for me personally. My first influencers of charitable giving were my grandparents and my parents. I am so grateful the lessons I learned at home created a solid foundation for my career. So, here I am at this turning point – and I Thank You all – for your continued support to UWCK and for your partnership in making Great Bend and Central Kansas the best place to live and work. I am so excited for the future of our local United Way. From the growth opportunities of existing impact projects to introducing additional programs that will engage new collaborations for the betterment of our communities. See you soon at Chamber Coffees and other community events. Hey – does this mean my chances to win door prizes increases? See you soon – Gaila Demel

Continued from Page 1

plaque? Email gbcc@greatbend.org.

- Don't forget! Gift certificates are valid for 5 years, so check those expiration dates before accepting.

SHOP LOCAL & WIN!

- When you shop local this holiday season, you will be rewarded! We are raffling HUNDREDS of dollars in Gift Certificates closing out Member Appreciation Week on December 17th. Shop Local & Win starts on BLACK FRIDAY!

How to Enter:

- Spend at least \$20 with a Chamber Member in one transaction.
- Email a picture of your receipt to shoplocal@greatbend.org.
 - o Include your Name and Phone Number when submitting receipts.
 - o Every transaction totaling at least \$20 is an additional entry.
- Members are encouraged to stop in during Member Appreciation Week for an additional entry into the drawing!

Ribbon Cuttings!

Great Bend Chamber of Commerce welcomes new business, Yo Dog Wieners, with a Ribbon Cutting



Chamber Ambassador's Club hosted a ribbon cutting at Dry Lake Brewing for Yo dog Wieners. Yo Dog Wieners is owned and operated by Josh and Laura Blankenship. The new Chamber members celebrated the new adventure, Yo Dog Wieners. In talking to the group about Yo Dog, Laura said, "We are the Chipotle for hot dogs. With over 20 toppings offered, our customers are able to create their perfect wiener every time they visit."

Yo Dog is a mobile food unit and the husband and wife duo plan to visit communities all across Kansas and Missouri. However, they made it clear, they are a family run business. Customers will see their two boys working with them at most events. The Blankenship family believes in entrepreneurship, adventure, and trying new things. The family is on a mission to help make a difference for veterans and their dogs! They are proud to donate a portion of the profits to Paws and Stripes, an incredible organization that provides animal-assisted therapy and other mental health services to military veterans and their loved ones living with service-connected trauma. Find them on Facebook at: <https://www.facebook.com/YoDogWieners>, or online at www.yodogwieners.com.



GREAT BEND

CHAMBER OF COMMERCE

FEATURED AMBASSADOR

Lleraldy

Sandoval

The Buckle



What brought you to Great Bend? What keeps you here?

I've always been a small town girl & my heart has always been with GB. I moved when I got promoted with Buckle in 2013, I went out to manage for a couple years. Even then I requested I'd stay close to home (GB). I then got engaged and decided to move back, I was grateful enough Buckle also supported me and had a position for me back Home. Being back in Great Bend with my family, my career and in a community that cares makes me happy. No where I'd rather be growing a family in!

Where do you work and what do you do there?

I co-manage The Buckle. We wear many hats, from finding the perfect pair of jeans for anyone to merchandising store, recruiting special people to work by my side, to being a coach and mentor to our team. I love getting the opportunity create a memorable experience and put a smile on someone's life, it goes beyond selling clothes. Giving the opportunity like I had, to some else and to build a rewarding career with Buckle is also my favorite part about my career!

What energizes you and brings you excitement?

My boys give me energy & motivation when I need it most. They are my WHY! Surrounding myself with positive, high energy people, fuel me! I am blessed to have them in my career at Buckle and have them in my personal life, such as my mother!

At what job, would you be terrible?

I'm a creative person but I would be a terrible artist. I can not draw, sing or act to save my life.

How long have you been a Chamber Ambassador and what do you like most about it?

I have been an Ambassador for not quite a year. My time has been a little limited, would love to be more vested but I love everyone's passion for our community, they have made me feel welcome and I want to continue to do that for others and our city!

About Chamber Ambassadors: The Great Bend Chamber of Commerce Ambassador Club is made up of 30 men and women from the Great Bend business community who represent the Chamber in a number of ways. To find out how you can become a member of the Ambassador Club, contact Lee Ann June at the Chamber office, 620-792-2401, marketing@greatbend.org, or www.greatbend.org/ambassadors

Continued from Page 9

going on and truly want to help anyone who is struggling.”

For Randolph, teen suicide is especially personal. Her 14-year-old son, Devin, took his own life last year.

“This issue is obviously near and dear to my heart,” she said. “It really means a lot to me that students are making this awareness campaign a priority at Hoisington High School.”

Randolph had been at the school only two months when her family’s tragedy occurred. “The staff and students really rallied around me and supported me. I am so impressed now at the level of involvement in Zero Reasons Why and the students’ desire to take the lead in this campaign.”

“They recognize the importance of talking about suicide and mental-health issues. They see the impact on others and want to help make a change. I am grateful the students are taking on this project and running with it.”

One of those students is Kortney Lang, 16, who noted “this is an important cause. Mental-health issues and suicidal ideation are growing problems and Zero Reasons Why could be a way to change that in our school.”



Zero Reasons Why participants display a banner at a Hoisington High School football game.

“This project could make a difference in the lives of those who are struggling; it might even show them the light at the end of the tunnel.”

Lang believes ZRW is a good campaign for future business leaders because “no matter where you are, some of the people around you are going to struggle. Everyone has problems and helping people deal with those problems is a lifelong skill.”

FBLA members also are working on a presentation for Hoisington Middle School to encourage students there to get involved in ZRW.

“The negative feelings that result in mental-health issues can begin in middle school,” Lang commented. “There is a lot of

bullying in that age group. But those being bullied don’t want to talk about it. They just deal with it on their own.

“If they know about Zero Reasons Why, maybe they will reach out and discover they have support. I hope they do.”

The Hoisington teens also have scheduled a presentation at Stafford High School. “If any school wants to get involved, we would recommend starting small and watching it grow over time,” Lang suggested.

Julie Kramp, executive director of The Center for Counseling & Consultation, hopes “others are inspired by the Hoisington students. They have such enthusiasm and great ideas; we are eager to see the ripple effect of their involvement. They are truly making a difference.”

The Center for Counseling & Consultation is a Community Mental Health Center serving Barton, Pawnee, Rice and Stafford counties. Professionally trained personnel offer: individual and group therapy; marriage and family counseling; community-support services; community-based services; psychosocial rehabilitation; peer support; and medication management. The confidential 24/7 crisis hotline number is 800-875-2544.

ElderCare seeks Giving Tree donations for home-care clients

Even though the COVID-19 situation has improved, those who want to choose an ornament from the ElderCare Giving Tree are encouraged to make an appointment.

“When people make appointments, we can limit the number of people here at any one time,” explained Brandi Gruber, ElderCare executive director. “We did this last year and it worked very well.”

The Giving Tree is located in the lobby at the ElderCare office, 1121 Washington, Great Bend. Donors may call 620-792-5942 or email bgruber@eldercareks.org.

“We are more than happy to accommodate anyone who wants to spread the Christmas spirit to the people we serve,” Gruber commented. “Many of our seniors are still not getting out too much and we know they appreciate support from their community. The Giving Tree gifts always bring smiles.”

The tree is trimmed with decorative tags that represent ElderCare clients and their particular needs. Actual names are not used because of privacy concerns.

Gifts should be returned to the ElderCare office by Dec. 15.

This year marks the fifth annual Giving Tree project. The number of gifts has steadily increased over the years; more than 100 gifts

were delivered last year.

“This project has always been popular,” Gruber commented. “We trust that our generous community will come through again this year. Because of the pandemic, it is especially important to remember our seniors who are short on finances and have limited mobility.”

“They need to know their neighbors are thinking about them during this special time of year. We encourage individuals and businesses to play Santa Claus by donating some basic items.”

For example, gifts could include blankets, warm clothing, toiletry items, crossword puzzle and word-search books, along with gift cards for a few staples at the grocery store.

Counties involved are Barton, Pawnee, Rush, Stafford and Pratt. ElderCare serves about 350 clients in this area. Anyone who receives home services in these counties is eligible for the Giving Tree project.

“Our caregivers offer suggestions because they are our eyes and ears when visiting private homes,” Gruber said. “They also deliver the gifts and genuinely enjoy sharing a little Christmas spirit with their clients.”

Anyone who knows a senior citizen who could benefit from this project is encouraged



Jessica Wilson, finance director, decorates the Giving Tree at Great Bend’s ElderCare office.

to contact ElderCare soon.

The non-profit agency’s home services include personal care, household tasks and respite for caregivers. Registered nurses offer medication management, wellness checks and companionship.



**CELEBRATING OVER 55 YEARS
OF SERVING PEOPLE WITH
DEVELOPMENTAL DISABILITIES!**

There is a Difference.

EARLY EDUCATION
CASE MANAGEMENT
DISABILITY SUPPORTS
RESIDENTIAL ASSISTANCE
COMMUNITY EMPLOYMENT
RECYCLING & MANUFACTURING
GENERAL PUBLIC TRANSPORTATION
& MUCH MORE!

620-792-1325
WWW.SUNFLOWERDIV.COM

Hutchinson Clinic Physicians Serving the Great Bend, Hoisington & Ellinwood Areas

GREAT BEND:

Hutchinson Clinic Great Bend / 3715 6th Street
Dr. Jamil Ahmed, Cardiologist
Dr. Aaron Thiessen, Ear Nose & Throat
Dr. Curt Thompson, Interventional Radiologist
Natalie Williams, PA, Pulmonology

ELLINWOOD:

Ellinwood Medical Clinic / 611 N. Main
Dr. Jamil Ahmed, Cardiologist

HOISINGTON:

Clara Barton Medical Clinic / 250 W 9th St
Dr. Costy Mattar, Cardiologist
Dr. Christine Sanders, OBGYN
Dr. Curt Thompson, Interventional Radiologist

Exceptional Care Close to Home



Call for an appointment: 620-669-2500
www.hutchclinic.com

CHAMBER COFFEE SCHEDULE

Every Thursday | Doors Open at 9am | Program at 9:30am

Tune in on Facebook or YouTube for Virtual Coffees

December 2, 2021

HEART OF KANSAS MERCANTILE

1212 Main St. in Great Bend

Heart of Kansas Mercantile & Miss Pretty Pickles is a unique and exciting gift store located at 1212 Main St. in Great Bend. They offer a stunning selection of gifts, cards, toys, children's clothing and books, fashion and accessories along with gourmet foods, kitchen accessories and eclectic items all presented in a fun "Kansas" theme! You'll also find an amazing collection of items made by local artists and crafters. They always offer free gift wrapping along with free samples of tasty foods.

December 9, 2021

PEOPLES BANK & TRUST

2220 Broadway Ave. in Great Bend

Since, 1898, Peoples Bank & Trust has worked hard to build relationships in the communities they serve. Their 16 branches are located in 14 communities in central Kansas. Community members will find the employees of Peoples Bank and Trust cheering on local teams, helping at community events, and volunteering with local organizations, as they strive to make the greatest impact in the communities they serve. They do this by being honest, working hard, having a vision, and building relationships

December 16, 2021

**GOLDEN BELT COMMUNITY FOUNDATION
THE GREAT CHARITY GIVEBACK**

Prince of Peace Parish Center | 4100 Broadway Ave. in Great Bend

Join Golden Belt Community Foundation as they give back over \$10,000 in matching funds and other grants to local charities. They will highlight the impact of this year's Giving Tuesday event, recognize top organizations and donors that made this event possible and announce the Most Generous City for 2021.

December 23, 2021 & December 30, 2021

NO CHAMBER COFFEES

Merry Christmas from the Great Bend Chamber of Commerce!

The Great Bend Chamber of Commerce will be closed on December 24th and will reopen on December 27th.

January 6, 2022

**K-STATE RESEARCH AND EXTENSION
COTTONWOOD DISTRICT**

3007 10th St. in Great Bend

K-State Research & Extension has had a presence in all 105 counties in Kansas for over 100 years. The Cottonwood Extension District, which joined the Barton and Ellis County programs is in its fifth year of providing unbiased, research-based information for residents of Central Kansas. Extension programming related to agriculture and natural resources, family and community wellness, 4-H and youth development, and community vitality is what they do best. Their team members would love to meet you and provide lifelong learning opportunities. Please note that the Great Bend office is moving to 3007 10th Street the week after Thanksgiving.



3307 10th Street • Great Bend, KS 67530

McDonald's

is providing coffee for Chamber of Commerce coffees.

Shop Rosewood Stores
Downtown Great Bend!

Enter Your Chance to
Win \$1,000 in Gifts!



GOLDEN TICKETS AVAILABLE AT:

Santas Around the World Main and Lakin

Open: Sat. Nov. 28th, 6:30pm - 8:00 pm Thurs. & Fri. 4:00 - 6:00 p.m. Sat. & Sun. 1:00 -6:00 p.m. through Dec. 24th.

Also at Wild Lights in Brit Spaugh Park

Enter Your Golden Ticket at any Rosewood Retail Store Downtown!

Rosewood Wine Cellar
1901 Lakin · Great Bend
Holiday Gift Basket
\$350 Value

Rosewood Bargain Barn
1215 Main · Great Bend
Mystery Gift Box
\$350 Value

Rosewood Furniture Gallery
1601 Main · Great Bend
Handcrafted Furniture Item
\$350 Value

SantasAroundTheWorld.com/Golden-Ticket

Drawings: Friday, December 17, 2021

Need not be present to win. Must be 21 yrs. of age to enter. Winner will be contacted immediately following drawing.

- Shop Rosewood Wine Cellar for beautiful holiday baskets to meet your gifting needs!
- Visit Santas Around The World at Main and Lakin. Create a festive family tradition!

Merry Christmas!

OBJDEC2021



HOLIDAY SUPER SALE

Nov. 22nd Thru Dec. 24th

ROSEWOOD
GALLERY

15-50% Off

Select Furniture & Décor Items



QUALITY HANDCRAFTED FURNITURE

- Special Orders Available
- Farmhouse Finishes
- Children's Furniture
- Stains & Paints To Match Décor

HOME DÉCOR & ACCESSORIES

- Elegant Table Cloths
- Home Décor
- Porcelain Dolls
- Blanket Throws

Rosewood Furniture Gallery

1607 Main Street, Great Bend • 620-793-8599

RosewoodFurnitureGallery.com • Open Monday - Saturday

Quality Handcrafted Hardwood Furniture

QUALITY RESALE PRODUCTS UNBEATABLE PRICES!

ROSEWOOD
BARGAIN BARN

Fun Holiday Mystery Boxes?!?

...

Unique ♦ New
Gently Used Items

...

SATURDAYS
Brand Apparel &
Accessories



1215 Main Street, Great Bend, KS • (620) 796-2223

RosewoodBargainBarn.com

Open Monday - Saturday

Celebrate Holiday Cheer At The Cellar!

- Fine Rosewood Wine, including Limited Editions
 - Free Wine Tasting While You Browse
 - Unique Gifts & Products
- Custom Gift Baskets, Prepared Just For You
- Bath, Candles, Local Honey, Jellies and much more!

**A Fun and Unique Experience,
Enjoy it with Friends & Family**

Rosewood Wine Cellar

1901 Lakin, Great Bend • 620-603-6410

Open Mon-Th 10-6 & Fri-Sat 10-8

RosewoodWineCellar.com

ROSEWOOD
WINE CELLAR



OBJDEC2021

SNIP -N- SAVE

Snip and present this coupon at the Rosewood Wine Cellar, Rosewood Gallery, or Rosewood Bargain Barn and receive 20% off one in-store item.

CREATIONS FROM THE HEART

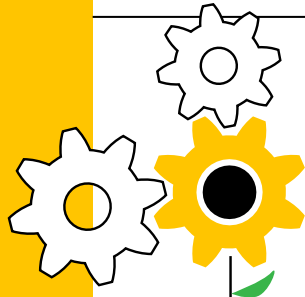
Coupon expires **January 17, 2022**. Not valid with any other sale. Does not include wine. Must present clipped coupon at time of purchase to receive discount. One coupon per purchase.

Your Purchase Matters

By Purchasing from our wide selection of Rosewood Creations Products, you get the best quality in unique products and you help support employment opportunities for people with developmental disabilities.



Growing Rural Businesses



ENTREPRENEURIAL Certificate Program

GREAT BEND

Growing Rural Businesses is an 8-week certificate program taught by Wichita State University's Center for Entrepreneurship experts custom-made to meet the needs of existing rural business owners who are ready to grow.

Participants receive comprehensive, practical instruction in the finer points of growing a thriving rural business in a dynamic collaborative environment where they network with peers. All classes are taught in-person by WSU's Center for Entrepreneurship who are experts in running businesses. Facilitated group discussions provide insights about business challenges and strategies to solve them effectively.

**Thursdays,
Feb. 3 – March 31
5:30 to 8:30 p.m.**

\$300 for all 8 sessions

Great Bend Events Center
Santa Fe Trail Conference Room
3111 10th Street
Great Bend, KS

Early Bird Discount
Save \$50
Register by Jan. 21

Great Bend Entrepreneurial Training Seminar Line-up

- 1. Entrepreneurial Mindset for Small Businesses • February 3**
Assessing your entrepreneurial spirit; building a business concept statement and vision.
- 2. Customer Discovery: The Roadmap to a Successful Marketing Plan • February 10**
Applying market research/market segmentation.
- 3. Marketing: The Power of Telling Your Story • February 17**
How this drives success on Google resulting in profitable customer action.
- 4. Basic Sales Techniques and Practices for Selling • February 24**
Selling the concept and the keys of making a sale, identifying a potential customer.
- 5. Practical Legal Issues • March 3**
Improving vendor relationships, negotiations, and contracts for positive (win/win) outcomes.
- 6. Keeping a Financial Focus • March 10**
Monitoring critical numbers and financial control systems of your business.
- 7. Creating Value for Your Customers • March 24**
Customer service/consumer behavior, exceeding customer needs before, during and after.
- 8. Bringing it All Together: Developing an Effective Niche Strategy • March 31**
Competitive advantage in the marketplace.

Contact:

Sara Hayden

Great Bend Economic Development
director@gbedinc.com

620-796-2407

or

Megan Barfield

Great Bend Chamber of Commerce
mbarfield@greatbend.org

620-792-2401

**Enrollment
is limited.
Register
online ►**



PARTNERS:



WICHITA STATE
UNIVERSITY
W. FRANK BARTON
SCHOOL OF BUSINESS

CHECK OUT THE LATEST NEWS FROM THE GREAT BEND CHAMBER BUSINESS COMMUNITY!

OUTLOOK

GREAT BEND
CHAMBER OF COMMERCE

A MONTHLY PUBLICATION OF THE
GREAT BEND CHAMBER OF COMMERCE

business journal

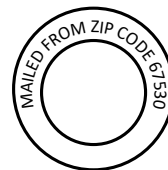
1 9 2 1



2 0 2 1

Great Bend Chamber of Commerce
1125 Williams Street
Great Bend, KS 67530

- RETURN SERVICE REQUESTED -



PRESRT STD
U.S. POSTAGE
PAID
PERMIT NO. 4

GREAT BEND
CHAMBER OF COMMERCE

December 13 - 17

Member Appreciation Days

NOT A MEMBER? JOIN THIS WEEK!

🍬 All Week:

Pick up 2022 Member Signage
Register for Prizes (one entry per day)
Enjoy Mimosas, Hot Cocoa Bar, Coffee & Treats

🍬 Wednesday, Dec. 15

Learn more about the Member Information
Center (MIC) with this FREE Training, 10am

🍬 Thursday, Dec. 16

Chamber Office is open until 6pm

🍬 Friday, Dec. 17

SHOP LOCAL & WIN!

3pm Facebook LIVE announcing Winners from
the week and Shop Local & Win Campaign