

# OUTLOOK

**GREAT BEND**  
CHAMBER OF COMMERCE

SEPTEMBER 2021  
VOLUME 100 NO. 9

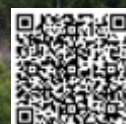
A MONTHLY PUBLICATION OF THE  
GREAT BEND CHAMBER OF COMMERCE

business journal

1 9 2 1



YEARS 2 0 2 1



## Chamber Golf Tournament Scheduled for September 24th

The Great Bend Chamber of Commerce is excited to welcome the upcoming fall months as it energizes effort for the 16th Annual Great Bend Chamber of Commerce Golf Tournament scheduled for September 24th at Lake Barton Golf Club.

The tournament is a great way to connect business with pleasure and provides an opportunity for participants to network with other business professionals in a casual and relaxed environment. Registration begins at 10:00 a.m., with a Shotgun Start at 11:00 a.m. Players can look forward to a four-man scramble format with nearly \$5,000 in tournament prizes and raffle drawings. Golfers will also enjoy top-notch hospitality which

includes a sponsored beverage cart, hole contests, putting challenges, lunch, and a chipping contest.

Registration is \$115 per player, or \$450 per team and includes a Grab & Go Lunch, PLUS Mulligans for the entire team. To reduce congestion at time of registration tournament day, please register and pay prior to tournament. Register your team online on the tournament event page or by calling (620) 792-2401.

Proceeds from the tournament support the operations and programs of the Great Bend Chamber of Commerce. We encourage you to visit [greatbend.org](http://greatbend.org) to learn more, scan the QR code above, or to complete the sponsor/participant registration form/ contact the Chamber Office at 620-792-2401.



### How does your support of the Chamber help area businesses and the community-at-large?

Your registration benefits the following Chamber Programs and Services:

- Small Business Assistance
- Legislative Affairs at the local, county, state and national level
- Central Kansas Jobs and workforce development
- Monthly Outlook Business Journal (giving businesses a way to share their news)
- Ribbon Cutting Ceremonies (celebrating new business and growth)
- Gift Certificate Program (incentivizing local spending)
- Quarterly Seminars to bring education and awareness to employers
- Barton County Young Professionals
- Agribusiness Committee (Kids Ag Day)
- Great Bend – Better than Great



here for you

**WE DO I.T.**

**CLOUD  
INFRASTRUCTURE  
MANAGED IT  
SECURITY**

nex-tech.com/business • 800.588.6649



**Committed to  
caring for the  
Great Bend  
community.**

Providing the Great Bend community greater access to the resources of the only academic health center in Kansas. Together, we are committed to ensuring the continued well-being of this community, close to home.

[kansashealthsystem.com/community](http://kansashealthsystem.com/community)

# Dr. Perry Smith retires from family medicine practice

After more than four decades of caring for and treating patients, Perry Smith, MD, is taking down his family-physician shingle and looking forward to enjoying more time with his family and tinkering with his hobbies.

Dr. Smith's last day at The University of Kansas Health System Family Medicine was July 14. A new family physician will join the team in October.

"From the beginning, I knew I wanted to be in family medicine," said Dr. Smith, an Inman native. "I had good family practice physicians when I was growing up. This is what I wanted to do. I enjoy my work, but it is time to take a step back."

Family medicine physicians care for people with all types of conditions, he said. "The team is focused on coordination with families and sometimes other healthcare professionals, including specialists, when needed."

"Some of my patients have never had another doctor," he continued. "I delivered them, their kids and their grandkids. In several instances, I have cared for fourth and fifth generations."

Dr. Smith is well aware he will miss these patients and his co-workers. But he also is eager to spend time with his grandchildren and dabble in his hobbies.

"I will miss being around people. I have been seeing 30-plus patients a day and have built relationships with many of them," he said. "I also will miss interacting with this great staff and my family medicine partners."

With more time on his hands, Dr. Smith and his wife, Krista, hope to continue their travels. They have traveled extensively throughout the years and "will continue to do so now that we can start going places again."

He also is eager to tinker with his restored Model A Ford and to put miles on his bicycle. Then there are the antique clocks he wants to learn more about.

"Krista probably has a few things in mind to



Perry Smith, MD

do around the house. But mainly I will keep out of her way," Dr. Smith laughed.

Daughter, Kelsey Sciacca, her husband, Adam, and their two children, Reid and Chase, live in Great Bend. Son and daughter-in-law, Mason and Amy, live in California with their son, Faris.

## Past and future

Dr. Smith, a graduate of the University of Kansas School of Medicine, joined Tom Alderson, MD, and Jay Schukman, MD, in 1980. Alderson, Schukman and Smith later became Central Kansas Family Practice. Great Bend Regional Hospital then purchased the practice. In August 2018, the practice became part of The University of Kansas Health System, after the acquisition of Great Bend Regional Hospital by the health system.

Jeff Brozek, MD, joined Dr. Smith in 1987; the other partners had left. "Jeff and I didn't know one another before this. He interviewed with me and it turned out to be the best partnership I could have ever had. I couldn't have asked for anyone better than Jeff."

Patients can be assured that the physicians, as well as the other practitioners, will always be available. "This is key to family medicine," Dr. Smith said. "We want to be here at all times to treat people like they need to be treated. Someone is always on call after hours. My patients will be in good hands."

In addition to Dr. Brozek, the team includes Charles Keener, MD, Teri Turkle-Huslig, MD, Jonathan Pike, MD, Gina Westhoff, physician assistant, and Elise Snapp, advanced practice registered nurse.

Dr. Smith was pleased to share that a new specialist will be joining the family medicine team in October. He added that this provider is already very familiar with the family medicine practice and the Great Bend community. Further information about this provider will be forthcoming from the health system this fall.

## Digital Marketing Employer Roundtable offered Sept. 22

Join Aubree Karlin and Kyle Wisheart, Digital Marketing Specialists from Nex-Tech Advertising Solutions, for this roundtable on September 22 at 11 am. Karlin and Wisheart will show participants how digital marketing

can target their ideal customer, increase ROI, and market the business in new ways using Google, Facebook, Snapchat and more!

Go to [www.greatbend.org/eventregistration](http://www.greatbend.org/eventregistration) for more information.



# On-site substance-abuse counseling now offered at The Center

Those with substance-abuse problems can now seek on-site treatment at The Center for Counseling & Consultation because of a new partnership.

Julie Kramp, executive director, is "relieved and grateful that a well-respected provider is now counseling substance-abuse clients in-house in three of our area communities."

The Center and Mirror Inc., whose reach spans the state of Kansas, have formed a partnership to meet this need.

"Mirror has knowledge and experience in counseling residents of smaller, rural communities and will absolutely increase access to this much-needed service," Kramp said. "They are one of the largest providers in Kansas and have a great reputation. We are so thankful to be linked in to Mirror Inc."

On-site substance-abuse services ended at The Center a couple of years ago when it lost all its providers to other organizations for various reasons.

"It breaks your heart when you can't offer services that you know are so desperately needed," Kramp commented. "This has been a huge issue here for a long time. There are providers in the area but there are never enough."

To illustrate the extent of the issue, The Center served about 250 clients at any one time when it did offer on-site substance-abuse counseling.

Heath Bechler, Mirror Inc. president, said the partnership began when Kevin Ford, counselor, mentioned that treatment was needed in communities The Center serves.

"The Center has demonstrated a remarkable commitment to the region it serves," he added. "It is the go-to option for treatment. On-site services eliminate



**Julie Kramp, executive director of The Center for Counseling & Consultation, and Kevin Ford, Mirror Inc. counselor, discuss their new partnership. Mirror is now offering substance-abuse treatment at The Center.**

a barrier for those seeking help and allows access to virtually everything they need in one place. The clients will be the ones who succeed."

Bechler also noted that he and his colleagues don't often see The Center's level of innovation, collaboration and disciplines in the mental-health and substance-abuse fields.

Numbers to call for an appointment with Kevin Ford are 316-217-2864 and 620-665-7750. He is in Great Bend Mondays and Wednesdays, Lyons on Tuesdays and Larned on Thursdays.

The Center for Counseling & Consultation is a Community Mental Health Center serving Barton, Pawnee, Rice and Stafford counties. Professionally trained personnel offer: individual and group therapy; marriage and family counseling; community-support services; community-based services; psychosocial rehabilitation; peer support; and medication management. The confidential 24/7 crisis hotline number is 800-875-2544.

## Grant Writing Workshop offered Sept. 14, 15

Grants are a vital piece in your community's funding, and you can do it.

K-State Research and Extension is hosting an online workshop presented by Nancy Daniels, Community Vitality Specialist for K-State Research and Extension, on September 14 & 15. Enrollment is limited, please use waitlist is offered. The two 3-hour courses cost \$60. Payment is made online.

**K-STATE**  
Research and Extension



### What you will learn:

- To conquer your fears and start writing
  - Sources of data for community needs
  - Where to find grants
  - How to develop the grant elements: problems, outcomes, activities, evaluation and budget.
- Questions, contact Donna Krug: dkrug@ksu.edu or to register scan the QR Code (open smart phone's camera app, phone will prompt user to open in browser).

## Outlook Business Journal

A monthly publication of the

**GREAT BEND**

CHAMBER OF COMMERCE

1125 Williams,  
Great Bend, KS 67530  
Phone: 620-792-2401  
Fax: 620-792-2404  
www.greatbend.org

### EXECUTIVE COMMITTEE

*Chairman*  
Pete Wesner, CUNA Mutual Retirement Solutions

*1st Vice Chair*  
Jerry Renk, American State Bank

*2nd Vice Chair*  
Shelly Peacock, TCI Answering Service

*Immediate Past Chair*  
AJ Chrest, Aflac District Coordinator

*Treasurer*

### BOARD OF DIRECTORS

Glenna Achatz  
Coldwell Banker Sell Real Estate

Rich Baskerville  
Ambassador Club (First Kansas Bank)

Rob Bauer  
Bauer, Pike, Bauer, Wary & Carroll, LLC

Sue Cooper  
Barton County / Central Kansas Partnership

Scott Dewerff  
KanEquip

Logan Garrett  
G-B Tire, Inc.

Randy Goering  
Eagle Radio

Ana Hayson  
Rana Luna Boutique

Jay Luerman  
BCYP (First Kansas Bank)

Teresa Powelson  
Golden Belt Community Foundation

Leslie Mingenback  
Miss Pretty Pickles / MyTown

Regan Reif  
The University of Kansas Health Systems

Douglas Reiser  
Central Kansas Surveying & Mapping Inc.

Todd VanSkiel  
Golden Belt Bicycle Company

### EX-OFFICIO

Lindsey Krom-Craven, Great Bend City Council  
Christina Hayes, Great Bend CVB  
Sara Hayden, Great Bend Economic Development, Inc.  
Shawn Hutchinson, Barton County Commission  
Dr. Carl Heilman, Barton Community College  
Khrist Thexton, USD 428  
Tory Marie Aramberger-Blew, Kansas State Legislature

### CHAMBER STAFF

Megan Barfield, President/CEO  
Lee Ann June, Communications & Program Coordinator  
Tayler Stegman, Office Manager

## FREE E-WASTE RECYCLING

**ROSEWOOD**  
**ecycle**



Does your *residence* or *business* have *electronics* in need of *safe and responsible recycling*?

Computers & Monitors  
Printers  
Fax Machines  
Laptops  
Televisions  
Video Game Consoles  
DVD Players  
VCR's & Cameras  
Cell Phones  
Telephone Equipment  
...and More!

### DROP-OFF LOCATIONS

Rosewood  
Maintenance Building  
2200 Main St., Great Bend  
Mon - Fri, 9:00 am - 4:00 pm  
Rosewood Bargain Barn  
1215 Main St., Great Bend  
Mon - Fri, 10:00 am - 6:00 pm

By recycling with us, you benefit your community, the environment, and you help create jobs for individuals with developmental disabilities.

You will receive a tax deduction receipt when you drop off unwanted electronics.

Rosewood ecycle  
2200 Main St.  
Great Bend  
South of the Dairy Queen!



CONTACT INFORMATION  
(620) 603-8348  
www.RosewoodServices.com

The Mission of Rosewood ecycle is to provide work-related training and employment opportunities to adults with developmental disabilities.

# Achatz earns Elite-Level Award

President & CEO M. Ryan Forman of Coldwell Banker Real Estate congratulates Glenna Achatz of Coldwell Banker Sell Real Estate on her exceptional sales performance that has earned her an elite-level recognition and ranks among the top Coldwell Banker independent sales professionals across the globe. We're excited and proud to present to her the Coldwell Banker International President's Circle Award. This remarkable accomplishment is well deserved. Her expertise, market knowledge and dedication to clients, separates her from her peers and has helped her earn her place among the top agents company wide.

Glenna is a member of the Great Bend Chamber of



Glenna Achatz

Commerce Board of Directors, and other community groups. She is a "home town girl" and loves to promote Great Bend. Glenna has been a real estate agent for 17 years and earned many prestigious Coldwell Banker Real Estate awards. Kim Vink, broker and business partner with Glenna at Coldwell Banker Sell Real Estate congratulates her on her exceptional performance which exemplifies the best and the brightest in real estate today. She is dedicated to being a trusted real estate advisor to her customers, lenders and other real estate industry professionals. Vink applauds her on her natural ability to communicate with her customers helping them find their dream home.

## Just in Time Remodeling to Celebrate Move to New Office with Grand Opening, Ribbon Cutting & Coffee Sept. 16

Just in Time Remodeling, a locally owned contractor based in Great Bend, would like to invite the general public to attend a special Grand Opening, Ribbon Cutting, and Chamber Coffee on Thursday, September 16th. The growing company is commemorating their move to a new shop and recently constructed office space located one mile west of Great Bend.

"Our old shop had under 1,300 square feet and we had long outgrown it. And our office was located downtown, which meant that the two sides of our operation were under different roofs," says owner Justin Mawhirter. "This new shop has nearly 7,000 square feet, which gave us the space to build an office suite inside the shop so everything can be consolidated and streamlined in one facility."

The public is invited to tour the new facility, located at 135 SW 30 Avenue, and to enjoy famous Mitchell's donuts along with custom espresso drinks and smoothies that will be made to order by the staff from HeBrews & She Serves Coffee Shop. The event will start at 9 a.m. with a ribbon cutting photo, followed by tours and networking during the

Chamber Coffee. There will be a brief program at 9:30 a.m. with door prize drawings at the end. Grand Opening giveaways include an iRobot vacuum cleaner, Kindle Fire tablet for kids, and other great prizes!

"Despite economic and supply chain

challenges across our industry, we have continued to grow because of our commitment to providing exceptional communication throughout the project, and because

we stand behind our work," Mawhirter says. "We hope everyone will come celebrate this special milestone with us. We look forward to recognizing our 9 employees in conjunction with Construction Appreciation Week as well."

Even though the company has built a strong reputation for specializing in kitchens and bathrooms, they also offer siding and replacement windows, trim and carpentry, flooring installation, countertop makeovers, and more. For more information or to see samples of their work, visit [www.greatbendremodeling.com](http://www.greatbendremodeling.com), or find them on Facebook or Instagram. To request a free quote, call or text 620-617-1714.



**Local SERVICE YOU CAN TRUST**

**Comfort Pro Inc.**

Only trust your home's crucial systems to the Pros at Comfort Pro.

**PLUMBING**

**HEATING**

**COOLING**

**AIR QUALITY**

**bryant**

WE'RE THE AREA'S LARGEST BRYANT DEALER.

Heating & Cooling Systems

**WHATEVER IT TAKES:**

1-800-937-3030



# HIGHLIGHTED EVENTS IN SEPTEMBER

- 2...Great Bend Summer Street Stroll Farmers Market
- 2...**Chamber Coffee: United Way of Central Kansas, Dry Lake Brewing, 1305 Main Street in Great Bend, Program @9:30am on the Chamber's Facebook Page or You Tube Channel**
- 6...No School – USD 428
- 8... Kids Ag Day!
- 9... **Chamber Coffee: Sunflower Diversified, Sunflower Recycling Center, 5605 10th Street in Great Bend, Program @9:30am on the Chamber's Facebook Page or You Tube Channel**
- 9... Great Bend Summer Street Stroll Farmers Market
- 10...Great Bend Alive Plaza, 5-8:30 pm, Forest Ave
- 13...Touched by Cancer Support Group, Heartland Cancer Center, 204 Cleveland St. @ 4pm
- 14...Dine for Dolly, Freddy's Frozen Custard & Steakburgers, 3008 10th St. @ 10:30am
- 14-15...Grant Writing Workshop – Online, Cottonwood Extension District @ 1pm
- 16... **Chamber Coffee & Ribbon Cutting: Just in Time Remodeling, New Location, 135 SW 30th Ave in Great Bend, Program @9:30am on the Chamber's Facebook Page or You Tube Channel**
- 16... Great Bend Summer Street Stroll Farmers Market
- 16...Sunflower Diversified Services Pancake Feed, Prince of Peace Parish, ALL YOU CAN EAT @ 4pm
- 16...Ladies Night – Downtown Great Bend @ 4pm
- 17-19...Great Bend Airfest 2021, Great Bend Municipal Airport
- 17...Pedal for Prevention, Remembrance Bike Ride for Devin Randolph, Brit Spough Park @ 6pm
- 17...Great Bend Alive Plaza, 5-8:30 pm, Forest Ave
- 18...Clear the Shelters, Golden Belt Humane Society, 151 S US Hwy 281, All Day Event
- 18...KWEK Butterfly Festival, Kansas Wetland Ed. Center, 592 NE K-156 Hwy, @ 9am
- 18...Heartland Farm – Farm to Table Dinner, Hartland Farm, 1049 CR 390 Pawnee Rock, @ 5pm
- 18...9th Annual Golden Belt Glow for Life, Vet Memorial Park @ 6pm
- 20...**Chamber Chat LIVE: Nex-Tech @ 2pm, Tune in on the Chamber's Facebook Page or You Tube Channel**
- 21...Central Kansas Partnership Meeting, Barton County Courthouse, 1400 Main Street @ 11am
- 22...**Employer Roundtable: Digital Marketing, deadline to register Sept. 13, [greatbend.org/eventregistration](http://greatbend.org/eventregistration) for more information**
- 23...**Chamber Coffee & Ribbon Cutting???: Wheatland Electric, New Location, 200 10th Street in Great Bend, Program @9:30am on the Chamber's Facebook Page or You Tube Channel**
- 24...**Great Bend Chamber of Commerce Golf Tournament, Lake Barton, 673 US 281 @ 11am**
- 24...Great Bend Evening Lions Club Fish Fry, First Presbyterian Church, 2400 Washington St. @ 4:30pm
- 25...Long Pumpkin Patch – Opening Day, 163 NE 30 Rd in Great Bend, @ 10am
- 27...College: Getting There from Here Seminar, Live Virtual Seminar Hosted by Edward Jones Financial Advisor, Kris Sundahl @ 12pm
- 28...Golden Belt Community Concert – The Fabulous Equinox All-Stars, GB Municipal Auditorium, @ 7:30pm
- 30...**Chamber Coffee: First Kansas Bank, New Location, 4001 10th Street in Great Bend, Program @9:30am on the Chamber's Facebook Page or You Tube Channel**

## Recurring Events:

Great Bend City Council Meetings, 1st & 3rd Mondays, Great Bend Events Center, 3111 10th St, 6:30pm  
 Barton County Commission Meetings, Every Tues., Barton County Courthouse, 1400 Main St, Rm 106, 9am  
 Great Bend Summer Street Stroll Farmers Market: Great Bend Courthouse Square. Thursdays 4:00pm to 7:00pm.  
 Visit [greatbend.org/events/calendar](http://greatbend.org/events/calendar) for a full list of great events taking place throughout the month!

**Virtual Chamber Events (Chamber Chat & Virtual Coffees) can be found: via Facebook ([www.facebook.com/gbcoc](http://www.facebook.com/gbcoc)) or YouTube ([tinyurl.com/ybepgrt6](http://tinyurl.com/ybepgrt6))**

**STAY INFORMED AT [GREATBEND.ORG](http://GREATBEND.ORG)**

**GREAT BEND**  
CHAMBER OF COMMERCE

**WELCOME**  
to Our **NEWEST**  
Chamber Members

## PHP AGENCY

Leticia Rodriguez, Marketing Director  
[phpkansasconquistadors@gmail.com](mailto:phpkansasconquistadors@gmail.com)  
 1037 Sheridan St  
 Great Bend, KS 67530  
 (620) 796-5525  
[www.phpagency.com](http://www.phpagency.com)  
**Finance & Insurance**

## ELDRIDGE TRUCKING LLC

Billy Eldridge, Owner  
[truckeldridge@gmail.com](mailto:truckeldridge@gmail.com)  
 80 10th St  
 Great Bend, KS 67530  
 (620) 617-4197  
**Trucking**

## WANT TO JOIN?

If your company is interested in joining the Great Bend Chamber of Commerce, fill out the online application on [www.greatbend.org](http://www.greatbend.org).

## Promotions:

## Peoples Bank and Trust appoints Wilborn to CFO

Peoples Bank and Trust has recently appointed Brian Wilborn to Assistant Chief Financial Officer.

"I am excited to have Brian step into this role. He is an experienced, well-respected banker. His vast amount of banking knowledge, along with his hard work ethic have an immediate impact within Peoples Bank," said Tom Pruitt, President and CEO.



**Brian Wilborn**

Prior to this appointment, Wilborn was the Market President for Barton, Ness, and Rush County locations of Peoples Bank and Trust. He is a graduate of Fort Hays State University, Graduate School of Banking at the University of Wisconsin, the Kansas Agriculture and Rural Leadership (KARL) program, and has over 30 years of leadership experience in multiple areas of banking.

Peoples Bank and Trust has 16 locations in Kansas. Visit [peoples.bank](http://peoples.bank) for more information.



# *Scott's Welding Scott's Tank & Trailer*

## WORKING IN CENTRAL KANSAS: HOW IT BEGAN, HOW IS IT GOING

Even though Scott Reddig opened his welding business in Hoisington, for the first five years he worked for Seaboard Farms in Guymon, Ok.

That started in 1993 when he had one truck and a job-shop trailer. He took that equipment and his

expertise on the road to the Oklahoma Panhandle, staying a few days each week.

The extra-long commute came to an end for several reasons. "I met Karen and was tired of being on the road," Reddig recalled. "We got married and

decided to move to Great Bend in 2003. We are glad we did; we like Great Bend and it has been good for business."

Today, his complex of buildings at 228 SW 2nd Road is home to his original venture, Scott's Welding Service, as well as Scott's Tank & Trailer, which opened about 13 years ago. The Coating Division started in 2014.

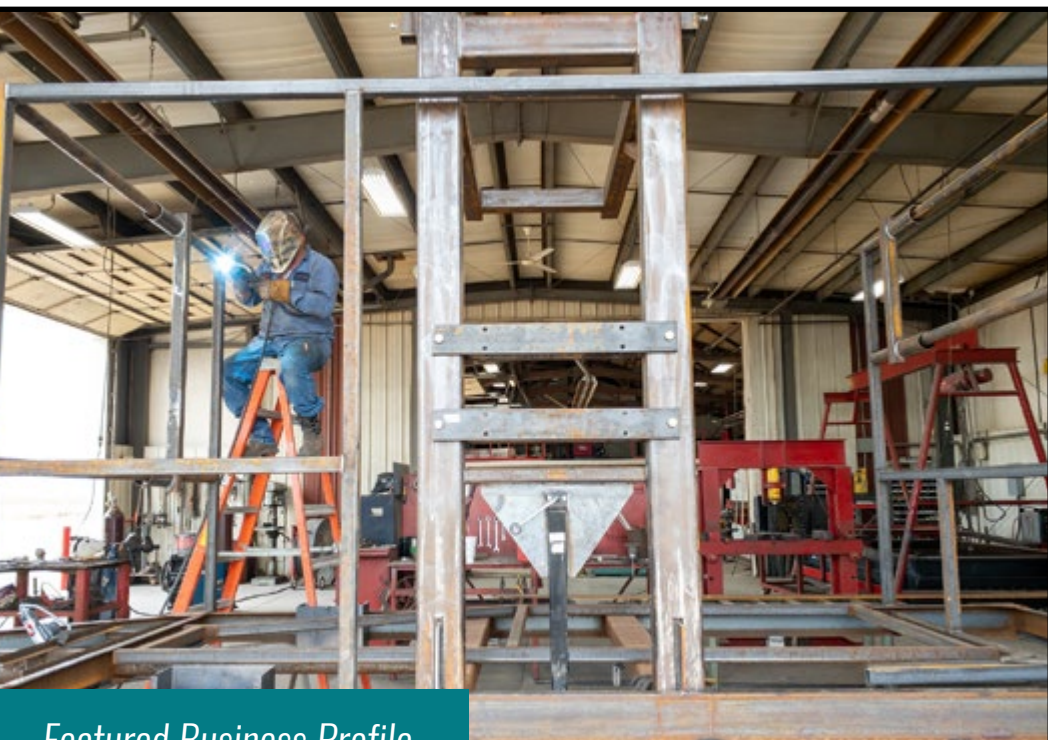
Scott is president and Karen is secretary/treasurer; they have three daughters "who think Dad can fix anything."

The 2nd Road site had an existing building when the Reddigs purchased it. The additions to the complex came gradually at the location, which is south of Faith Community Church, West 10th Street.

"The addition of the tank and trailer business is a real blessing. We are one of only two places in Kansas that does cargo tank inspections and repair."

The newest service is powder coating, which involves an oven that is 10x10x30 feet.

Just a few years ago, Reddig







opened an Emporia location; it offers many of the same services as the Great Bend location.

Scott's Welding offers all types of welding 24 hours a day, shop tooling and fabrication. Coating is performed only in Great Bend. The business is a supplier of steel, aluminum and stainless steel, and is a distributor for Norfolk Iron & Metal, Garnett SeeLevel and Liftmoore Truck Cranes.

Common jobs include ornamental iron, handrails, oilfield- and agriculture-related repair and millwright work. The team also designs and creates deer and duck blinds.

Some work is performed in-house but they have mobile capabilities as well to provide service and repair on-site for the customer, if needed.

"There is no job too big or too small. We even have people just stop in to have a garden hoe sharpened. We take care of them in a few minutes. And the next day we might get a pan of cinnamon rolls or an apple pie," Reddig smiled.

Scott and Karen are both semi-retired but are still familiar faces at the office where Karen takes care of the bookkeeping, payroll and other administrative tasks. Their service territory is all of Kansas, northern Oklahoma, southern Nebraska, western Missouri and eastern Colorado.

"We cut a pretty good swath

through this territory," Reddig commented. "We go where the work is. I probably know 90 percent of the back roads in Kansas."

And he keeps those roads hot by traveling each week to visit clients throughout the territory. He knows the importance of staying in face-to-face contact with customers.

While Reddig is traveling or enjoying a little of that semi-retirement, he doesn't fret about the work getting done because he knows his professional crew will handle it.

Sam McGinnis has been the Manager at the Emporia location for the past two years, relocating from Great Bend to take that position. Travis Kaiser has been General Manager in Great Bend for five years.

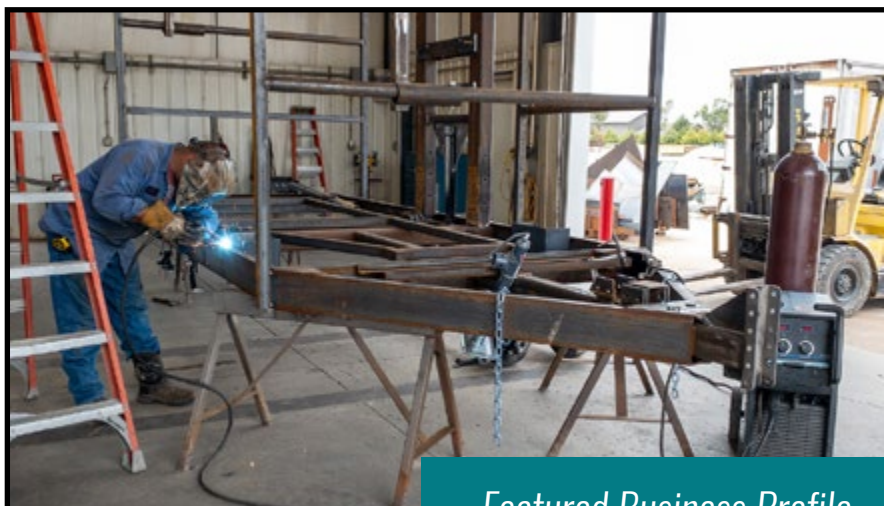
"I am proud of all our employees; many of them have been here a long time. They are the backbone of this business and understand the importance of quality work and great customer service."

In the beginning, Reddig had some part-time help and hired his

first full-timer in 1995 when he got a second truck. Currently, 11 people are on the payroll. He has been trying to "add employees but during this past year it has been particularly difficult to find qualified candidates."

Reddig always recommends the Barton Community College welding program for training. "Karen and I are big supporters of this program and have donated equipment to them; I even taught the course in 1993 at Hoisington High School. We always want to support our local community and shop locally."

The Reddigs support the Great Bend Chamber of Commerce, United Way of Central Kansas and Court Appointed Special Advocate (CASA) and others in Great Bend, as well as Flint Hills Technical College in Emporia. "We enjoy being involved in the communities we serve."



# Flea & TICK PREVENTION



620-792-1265



PROTECT YOUR PET TODAY!

Learn more at [myamcvets.com](http://myamcvets.com)



Phone: **620-792-5700**

1905 19th Street in Great Bend, Kansas

**Family Practice,  
Behavioral Health &  
Dental Services**

Preventative Care

Prescription Assistance

Diabetes Management

Evening Appointments

Open to Everyone

Bilingual Staff

All Insurance Accepted

Including Medicare, Medicaid & KanCare

*"We Care About Your Health"*

[www.HeartofKansas.com](http://www.HeartofKansas.com)

## Ribbon Cuttings!

### Sunflower Recycling Center's New Larger Facility Commemorated with a Ribbon Cutting



Sunflower Recycling Center was celebrating the opening of the new larger recycling center at 5605 10th Street. Shelby Zuniga, Sunflower Diversified Services CFO, spoke about the benefits of having clients work at the recycling center, "that's what we're all about teaching (clients) skills. Plus, obviously keeping the material out of landfill coping with the community, recycling efforts so it's just a win/ win." Serving 80 to 90 recycling customers on a daily basis from Barton County, Pawnee County, Stafford County, Rice and Rush county, Sunflower Recycling has been around for approximately 20 years. 240 businesses are currently on the business route for pick up. If your business is interested in joining this route, contact, Shawn Bates at [sbates@sunflowerdiv.com](mailto:sbates@sunflowerdiv.com). For more information go online at [sunflowerdiv.com](http://sunflowerdiv.com), or find Sunflower Diversified Service Facebook page. Hours of operation are Monday through Friday 9am – 6pm and Saturday 9am – 1pm.

### Great Bend Chamber of Commerce Welcomes Urban Defense Dynamics to the Chamber with a Ribbon Cutting



The Great Bend Chamber of Commerce and Ambassador's club hosted a ribbon cutting for Urban Defense Dynamics, 916 Williams. Davis Jimenez, owner and Chamber Ambassador, spoke to the group during the Chamber Coffee on August 5th. UDD as Davis referred to the business, is here to help you get peace of mind for your personal safety, home or business through our training and programs. UDD offers conceal carry, basic to advance weapons training courses, and can tailor a program to fit your needs. The ribbon cutting ceremony commemorated UDD's new location at 916 Williams. UDD has been in business for three years, serving Kansas Oklahoma, Nebraska and Missouri. Urban Defense Dynamics has so much to offer so stop by their office at 916 Williams in Great Bend and see how they can help you and your training needs. You can also find them on Facebook @UrbanDefenseDynamics.



## New Hires:

# Michaels joins Eagle Communications Team

Eagle Communications of Great Bend is thrilled to announce the addition of Ray Michaels to our team. Overseeing day to day operations of four locally programmed radio stations Ray brings a wealth of experience to the Great Bend market.

Ray's been in programming leadership since 1994 as Program Director of Hot 106.7 (KHTO) and Z106.7 (KZRQ) in Springfield, Missouri. From 2004 - 2011, he programmed top rated radio stations "T95" (KICT) and "The Fox" (KFXJ), Wichita, KS. Most recently and up until last year Ray was Operations Manager at a four station Townsquare Media cluster in Grand Junction, Colorado.

Regarding coming to Great Bend Ray said, "I'm excited and pleased to be a part of what most would agree is one of the best broadcast companies in the Midwest.

I'm looking forward to being able to contribute and help improve an already outstanding organization."

Ray will also take on the Program Director role of "B104.3 The Point" (KVGB-FM), a 100,000 watt Classic Rock station at Eagle of Great Bend.

General Manager Matt Althouse said, "I'm thrilled Ray will be joining our team. He brings some legendary experience to our market and will help uphold our high standards for broadcast excellence."

To inquire about promotional opportunities, feel free to reach out to Ray Michaels by phone at (620) 792-3647, email at ray.michaels@eagleradio.net.



Ray Michaels

## Ribbon Cuttings!

### Credit Union of America celebrates remodeled Great Bend branch



Credit Union of America's Great Bend branch was excited to open their doors and showcase the newly remodeled interior and advancements in technology during an open house held August 19th. The Great Bend Chamber of Commerce and Ambassadors hosted a special ribbon cutting commemorating the remodel for the local staff and members. Kelly Higgins, Assistant Vice President of Retail Operations at Great Bend branch, said the same services are available but with a different look and feel, referencing the new TAP Tellers. He went on to say that what hasn't changed are the friendly faces many have come to know, all of whom are there daily to assist customers with their banking needs. Credit Union of America supports several chamber programs such as the Business Showcase, held annually to welcome educators and staff back to school. "We have a great relationship with CUA, both their local staff and Wichita staff are wonderful to work with and truly care about the Great Bend area," commented Megan Barfield, Great Bend Chamber of Commerce President. CUA has been in business since 1935, when it was chartered at East High School as the Wichita City Teachers Credit Union. The Great Bend location opened in 1975, following the official name change to Credit Union of America, now located at 4708 10th St., Great Bend. A total of 80,000+ customers are served across their 14 locations. Learn more at [www.cuofamerica.com](http://www.cuofamerica.com).

### Glow Boutique & Tan celebrates remodel and expanded services with ribbon cutting



The Great Bend Chamber of Commerce and Ambassador's club hosted a ribbon cutting recently for newly remodeled Glow Boutique & Tan, located at 1657 Hwy 96 in Great Bend. Owner Kristy Oetken and her team started the remodel in November 2020 and have worked to create a warm and inviting experience for their clients. Oetken is excited to share new services recently added with more to come.

Memberships and packages are also available with convenience in mind. In addition to tanning, services include poly red light therapy, cool sculpting, massage chairs, wellness pod, and many boutique items. To learn more about service offerings, Glow Boutique & Tan can be reached at (620) 793-8862. Connect with them on Facebook @getyourselfglowing. Hours are Monday - Friday, 10:00AM - 7:00PM and Saturday 10:00AM - 3:00PM.

# GREAT BEND

## CHAMBER OF COMMERCE

# FEATURED AMBASSADOR

*Ryan Fairchild*

*Innovative  
Livestock Service  
&  
Dry Lake Brewing*

**What brought you to Great Bend? What keeps you here?**

I came to Great Bend for college and stayed because of a pretty girl. While attending Barton I met my wife Marisa and decided to delay my plans to continue my education in pursuit of one day opening a music instrument repair shop. This lead to selling 403(b) plans at CPI, then Moving into IT at CPI, fast forward a couple years to where I currently reside at ILS for the last 11 years. Great Bend has truly become home over the past 16 or so years. I love the atmosphere and ability to grow with the city. I'm excited by potential of Great Bend and what we are doing.

**Where do you work and what do you do there?**

I help maintain IT infrastructure and fill end user needs. I help maintain beer infrastructure and fill end user glasses.

**What's one thing about you that would surprise people?**

I used to be the laziest person in the room and didn't plan on doing anything other than playing music with my bands. I'm also not huge on big crowds of people. I am getting better at it.

**What energizes you and brings you excitement?**

Anti-Apathy. The fact that we can effect change regardless of what the apathetic part of your brain says. I also get inspiration from coming from a long line of hard workers who made the best of what they had and grew it so I could be where I am today.

**At what job, would you be terrible?**

I would be terrible at farming. It takes too much patience for my brain to handle.

**How long have you been a Chamber Ambassador and what do you like most about it?**

I've been an Ambassador for a few months. I like being able to chat with like minded people in a constructive way and helping set a good example of what our community can do and has to offer. Whether it be a new business or an individual moving to the area putting our best foot forward is part of what the Ambassadors are here to do.

**About Chamber Ambassadors:** The Great Bend Chamber of Commerce Ambassador Club is made up of 30 men and women from the Great Bend business community who represent the Chamber in a number of ways. To find out how you can become a member of the Ambassador Club, contact Lee Ann June at the Chamber office, 620-792-2401, [marketing@greatbend.org](mailto:marketing@greatbend.org), or [www.greatbend.org/ambassadors](http://www.greatbend.org/ambassadors)




IT'S HERE!  
ONLINE REGISTRATION  
GREAT BEND REC WEBSITE!

- GOTO: [www.greatbendrec.com](http://www.greatbendrec.com)
- CLICK: REGISTER TODAY
- SIGNUP

<https://www.greatbendrec.com>

GREAT BEND  
CHAMBER OF COMMERCE

# WINTER STORAGE

Wondering where to store your RV, boat, antique car, or motorcycle this winter?

The Great Bend Chamber of Commerce is now accepting reservations for the 2021/2022 Winter Storage season. Reservations are first come, first serve for spaces inside of Expo II located at the Great Bend Expo Complex. All stored items are secured in a locked facility from November 5th, 2021 through March 5th, 2022 with rates starting at \$225.



TO RESERVE YOUR SPOT,  
PLEASE CALL (620) 792-2401 OR  
EMAIL [GBCC@GREATBEND.ORG](mailto:GBCC@GREATBEND.ORG)





## UKHS Announces Partnership with Central Kansas Orthopedic Group

The University of Kansas Health System is announcing that Central Kansas Orthopedic Group in Great Bend, Kansas will become part of the health system. Terms of the contract were not disclosed.

“Our mission is to serve our community through offering the best possible orthopedic care for each individual patient. We have done that for many years by offering the latest in surgical innovations and orthopedic techniques to Great Bend and the surrounding areas. Becoming part of The University of Kansas Health System will allow us to continue that mission in new ways,” Randall K. Hildebrand, M.D. of Central Kansas Orthopedic Group said. “We are excited to work together to continue our high-quality care in this region.”

As part of the state’s academic medical center, The University of Kansas Health System is dedicated to extending the reach of academic medicine to more Kansans, so patients can stay closer to home to receive the

most advanced care possible. The health system also knows exceptional practices like Central Kansas Orthopedic Group are vital to their community and surrounding area.

“This announcement is exciting as it will preserve high quality orthopedic care in the Great Bend community and help ensure our hospital remains a strong employer and healthcare provider in the city and region for years to come,” said Randy Cason, Regional Vice President, Greater Kansas with The University of Kansas Health System.

The incredible team of physicians, clinicians and staff at Central Kansas Orthopedic Group play an important role in the practice. The health system plans to keep all the existing Central Kansas Orthopedic Group workforce in place.

Patients will continue to receive care from their current doctors at the current location. We anticipate the process will continue over the next few months.

## Schedule your holiday gifts now!

# YOURS TRULY

GIFT & FLOWER SHOPPE

Surprise! Ready or not the season of hustle, bustle, Christmas lights, holiday parties, and HOLIDAY GIFTS are just a few weeks away. Yes, we roll our eyes at the mention of holidays too early, but this year you should begin planning your holiday gifts now. Here is why:

Covid is still a “thing”

As much as we are all ready to get past this, the pandemic is greatly affecting product availability and continues to create major shipping delays. We want to make sure you “wow” your clients, employees, vendors with fun memorable gifts. By working with our gifting experts NOW, you can create a gift package and know that it will arrive on time!

Here at Yours Truly, we have pre-made holiday gift box options. They include artisan gifts, gourmet foods and are packaged in holiday gift boxes with handwritten notes. We also offer custom gift designs. Let

us help you design a gift in your price range and unique to your business. We will source the gifts, assemble and have each gift ready to give!

All gifts are available for local delivery or can be packaged and shipped.

Attached is a catalog of our holiday gift box collection available for pre-order now. You can choose any of these options as they are pictured or work with our team to customize. All options are available for pre-order in quantities of one to one hundred.

With current supply chain delays, we encourage you to pre-order by September 30, 2021.

To begin your holiday shopping now, contact Amy at Yours Truly, 620.796.2356, amy@yourstrulyks.com or visit Yours Truly Gift & Flower Shoppe at 2017 Lakin in Great Bend from 9am – 5:30pm, Monday-Friday or 9am – 3pm on Saturday.

## Barton County Facade Improvement Grant is Open

The Barton County Facade Improvement Grant (FIG) program provides financial assistance to businesses and property owners for façade improvements to downtown areas to increase economic prosperity, accessibility, and quality of life in Clafin, Ellinwood, Great Bend, and Hoisington, Kansas. Our Program Summary provides more details.

### Grant Amount

Applications submitted through December 31, 2021, grants will be provided in the amount of up to 75% of eligible project

costs, with a maximum award of \$20,000. Funding amounts are determined based on project size, match, and community impact.

Starting January 1, 2022, grants will be provided in the amount of up to 50% of eligible project costs, with a maximum award of \$15,000. Funding amounts are determined based on project size, match, and community impact.

Funding is available until program funds are depleted. Barton County reserve the right to alter, amend, or

discontinue the program at any time without written notice. It is the intent of the program to have program in multiple communities.

### Design Guide

- The exterior project should make a noticeable contribution to the revitalization of the downtown areas.
- The exterior project should be compatible with and complement adjacent buildings.

For more information on eligibility for the grant, applications, and more, scan the QR code!





CELEBRATING OVER 55 YEARS  
OF SERVING PEOPLE WITH  
DEVELOPMENTAL DISABILITIES!

*There is a Difference.*

EARLY EDUCATION  
CASE MANAGEMENT  
DISABILITY SUPPORTS  
RESIDENTIAL ASSISTANCE  
COMMUNITY EMPLOYMENT  
RECYCLING & MANUFACTURING  
GENERAL PUBLIC TRANSPORTATION  
& MUCH MORE!

620-792-1325  
WWW.SUNFLOWERDIV.COM

## Hutchinson Clinic Physicians Serving the Great Bend, Hoisington & Ellinwood Areas

### GREAT BEND:

Hutchinson Clinic Great Bend / 3715 6th Street  
Dr. Jamil Ahmed, Cardiologist  
Dr. Aaron Thiessen, Ear Nose & Throat  
Dr. Curt Thompson, Interventional Radiologist  
Natalie Williams, PA, Pulmonology

### ELLINWOOD:

Ellinwood Medical Clinic / 611 N. Main  
Dr. Jamil Ahmed, Cardiologist

### HOISINGTON:

Clara Barton Medical Clinic / 250 W 9th St  
Dr. Costy Mattar, Cardiologist  
Dr. Christine Sanders, OBGYN  
Dr. Curt Thompson, Interventional Radiologist

Exceptional Care Close to Home



Call for an appointment: 620-669-2500  
www.hutchclinic.com

# CHAMBER COFFEE SCHEDULE

Every Thursday | Doors Open at 9am | Program at 9:30am

Tune in on Facebook or YouTube for Virtual Coffees

September 2nd

UNITED WAY OF CENTRAL KANSAS

Dry Lake Brewing | 1305 Main Street in Great Bend

The United Way of Central Kansas 2022 Campaign is underway! With a successful kickoff event in August behind them, UWCK is now focusing on their annual workplace and reaching out to donors in our communities for their continued support. Please be their guests at Dry Lake Brewing for a campaign update and to hear about the Community Impact Projects they have scheduled for the remainder of the year.

September 9th

SUNFLOWER DIVERSIFIED SERVICES

5605 10th Street in Great Bend

Sunflower serves infants, toddlers and adults with delays and disabilities in Barton, Pawnee, Rice, Rush and Stafford counties. They are celebrating their 55th year of service to the community! Sunflower believes that people with developmental disabilities CAN ACHIEVE and HAVE THE RIGHT TO PROVE IT.

September 16th

JUST IN TIME REMODELING

New Location! 135 SW 30 Avenue in Great Bend

Founded in 2017, Just in Time Remodeling is a family owned company based in Great Bend that serves homeowners all over Central Kansas. Specializing in kitchens and bathrooms, but they also offer siding and windows, entry doors and storm doors, and a lot more. Despite supply chain challenges and fluctuating material prices, they continue to grow because of their commitment to providing exceptional communication to customers, and because they stand behind their work. Licensed and insured. Estimates are free. Browse their work at greatbendremodeling.com, call or text at 620-617-1714, or find them on Facebook.

September 23rd

WHEATLAND ELECTRIC

New Location! 200 10th Street in Great Bend

Delivering Energy for Life – Wheatland Electric Cooperative, Inc., was established in 1948 as a distribution and power cooperative in Kansas to provide a vitally needed service for the member consumers which they, as members, could not provide on an individual basis. Today, Wheatland Electric provides power to more than 21,000 customers in 14 southwest and south central Kansas counties and three counties in Colorado. Together, with the help of their members, they're committed to building a better and stronger rural America.

September 30th

FIRST KANSAS BANK

4001 10th Street in Great Bend

First Kansas Bank prides itself on highly personalized customer care delivered by local decision-makers. They are pleased to say, for 121 years their Bank Team has provided key leadership in the four communities they serve. First Kansas Bank is committed to serving their Customers, Communities and Bank with these Core Values-Integrity and Team Work, Exceed Customer Expectations, Operate a Sound Bank, Balance Family, Work and Community.

October 7th

AMERICAN FAMILY INSURANCE – CHRIS BOYS AGENCY

1902 10th Street in Great Bend

As an American Family Agency, they have offices in Cimarron, Dodge City and Great Bend. They offer home, auto, commercial, farm/ranch, life and other types of insurance.



3307 10th Street • Great Bend, KS 67530

McDonald's

is providing coffee for Chamber of Commerce coffees.