



# OUTLOOK BUSINESS JOURNAL

A MONTHLY PUBLICATION OF THE GREAT BEND CHAMBER OF COMMERCE

## Friendliest Farm Show Debuts Online

### Great Bend's Virtual Farm Ranch & Hemp Expo April 8-10

2020 has proved one we won't soon forget altering history lessons for generations to come. Adversity often brings out the most innovative ideas in an attempt to provide connection and feed this very basic human need.

For the first time ever, the now Great Bend Farm, Ranch and Hemp Expo is going virtual, offering thousands of ag producers the opportunity to learn, share and grow together. Being online lends itself to inviting the entire world to watch and learn live at [virtualfarmexpo.com](http://virtualfarmexpo.com).

Being online lends itself to inviting the entire world to watch and learn live at [virtualfarmexpo.com](http://virtualfarmexpo.com).

The Live Show hours are 9:00 am to 5:00 pm on April 8; 9:00 am to 7:00 pm on April 9; and 9:00 am to 4:00 pm on April 10.

The Virtual Show has already begun with buyers and sellers getting connected through the Exhibitor Marketplace Group on Facebook, while vendors are also busy customizing their Virtual Booth that goes on display Friday, April 3rd at [virtualfarmexpo.com](http://virtualfarmexpo.com).

During the Live Show hours, the Home Page will display the current presenter using interactive ZOOM technologies. This expo is FREE to the public and ZOOM is a FREE video conferencing tool that will allow you to watch and interact with Presenters.

Exhibitors will be featured in between scheduled Presenters along with timely announcements throughout the show.

The community of Great Bend can help add to the vendor's experience by showing our known hospitable nature through online interactions and sharing with friends via social media!



### SCHEDULE

A packed schedule will still include Opening Ceremonies on Wednesday, April 8th at 10:30a.m. followed by presenters and programs including Hemp Seminars; JD Wing, Horse Training; and Jared Slagel

A lineup of impressive Exhibitors will be featured in between scheduled Presenters along with timely announcements throughout the show.

## Mind Sculpt Games holds Ribbon Cutting in celebration of new building and Award from Fort Hays State University

Mind Sculpt Games, LLC was recognized as the Kansas SBDC at Fort Hays State University Emerging Business of the Year at the annual Kansas Small Business Awards on March 5th in Topeka.

Owner Darcy Leech established Mind Sculpt Games to give the residents of Great Bend, Kansas a place to gather in a safe, educational, and fun space to play games. Mind Sculpt Games is a family-owned business aiming to bring face to face gaming to your kitchen table. They believe games build brains, relationships, and communities.

When Leech first contacted the Kansas SBDC at Fort Hays State University, she needed help developing three-year financial projections and building upon her business plan. Rick Feltenberger, Kansas SBDC Regional Director at FHSU, also helped Leech to narrow down the target demographics for the game store in order to meet the needs and interests of the community.

Located at 4908 10th Street in Great Bend, Kansas, Mind Sculpt Games carries over 200 different board games, as well as collectible card games like Magic the Gathering, Pokemon, and Cardfight! Vanguard. To learn more about Mind Sculpt Games, visit their website at [www.mindsulptgames.com](http://www.mindsulptgames.com).



We'll take care of this...

so you can take care of that!



**NEXTECH**  
Your Broadband & Technology Company

*The technology experts*

**Trust us with your  
business technology  
solutions, so you  
can focus on  
what matters most.**

*Receive a free technology consultation!  
Contact us today.*

**[nex-tech.com/business](http://nex-tech.com/business)  
800-588-6649**



THE UNIVERSITY OF  
KANSAS HEALTH SYSTEM

**Committed to  
caring for the  
Great Bend  
community.**

Providing the Great Bend community greater access to the resources of the only academic health center in Kansas. Together, we are committed to ensuring the continued well-being of this community, close to home.

[kansashealthsystem.com/community](http://kansashealthsystem.com/community)

## Great Bend program receives batterer intervention certification

A Great Bend batterer intervention program has been certified as compliant with state standards, Kansas Attorney General Derek Schmidt announced March 6, 2020.

Joyful House Inc., was certified as having met the core standards described in the Essential Elements and Standards for Batterer Intervention Programs. The program had first received a temporary certification in April 2019. A Kansas law enacted by the 2012 state legislature requires batterer intervention programs to obtain certification from the attorney general's office.

There are 36 batterer intervention programs currently fully certified in the state. Six additional programs operate under temporary permits.

The Batterer Intervention Certification Panel, appointed by the attorney general, completed an in-depth process including evaluation and site visits to assess program compliance. The certification was awarded for a two-year period, during which the program will be subject to additional monitoring by the attorney general's office.

Batterer Intervention Programs are community-based programs providing educational and counseling services to domestic violence batterers who use dominating, controlling and abusive tactics in relationships. These programs establish accountability for batterers and prioritize victim safety by assisting participants to choose and sustain non-violence in their lives.

For more information on the Batterer Intervention Program, visit [www.ag.ks.gov](http://www.ag.ks.gov) or call 1-800-828-9745. To contact Quenla McGilber with Joyful House, Inc. call (620) 923-6581.





# Local, State Officials Meet for Economic Development Discussion

As president of the newly formed Great Bend Economic Development Inc. (GBED), Jessica Milsap acted on a piece of advice. She's glad she did.

It had been suggested that Milsap meet with the Kansas Department of Commerce (KDOC) to learn about state business incentives and other economic development tools.

The result was a recent meeting in Great Bend with Dan Steffen, KDOC regional project manager of business development.

"Dan didn't hesitate to visit with us about the various incentive programs the state has to offer," Milsap said. "He has been with the commerce department for several years and is very knowledgeable.

"We reviewed several incentive programs, which will be extremely helpful in supporting and developing businesses in our community."

Steffen outlined several avenues to seeking state incentives, including Promoting Employment Across Kansas, Kansas Industrial Training, Kansas Industrial Re-training and Kansas High Performance Incentive Program.

"Businesses that want to learn more about state incentives are encouraged to give me a call," Milsap said. "There are a number of requirements for eligibility and we can help walk them through the application process with Dan's support."

Steffen noted that when he thinks of economic development, a "three-legged stool" comes to mind.

The three legs represent local start-up ventures, as well as expansion and retention of existing businesses.

"Oftentimes," Steffen said, "when the general public thinks of economic development, they think mainly about recruitment of large companies. But it is a lot more than that.

"Yes, you have to be ready for something new but you shouldn't put all your eggs in one basket. We need to support existing businesses too."

Milsap agreed. "If you look around the community, there are businesses that started with one or two employees that have prospered over the years. They now provide a number of quality jobs.

"The GBED board of directors and I are committed to supporting businesses no matter the size," Milsap added. "We collaborate with the Great Bend Chamber of Commerce and the city of Great Bend to help new and existing businesses."

Megan Barfield, new chamber president and chief executive officer, said she and the chamber board are excited about this collaboration.

"Economic development is not a one-person job," she explained. "By working together, we can leverage relationships across the state and the county. It has not been an easy road but we all agree that now is the time to roll up our sleeves and go to work – together."

Barfield also noted that the commerce department is a helpful resource. "Dan Steffen was quick to offer to help me connect the dots with the robust programs at the state level.

"Being able to call on him for support is a huge help in matching companies with the resources they need. The more we know, the more we can help business owners."

The GBED office is located in the Great Bend Events Center, 3111 10th; the number is 620-796-2407.



**Jessica Milsap, left, Megan Barfield and Dan Steffen put their heads together at a recent economic development meeting. Milsap is president of Great Bend Economic Development Inc., Barfield is president/CEO of the Great Bend Chamber of Commerce and Steffen is the Hays-based regional project manager at the Kansas Department of Commerce.**

## Outlook Business Journal

A monthly publication of the

**GREAT BEND**  
CHAMBER OF COMMERCE

1125 Williams,  
Great Bend, KS 67530  
Phone: 620-792-2401  
Fax: 620-792-2404

Web address: [www.greatbend.org](http://www.greatbend.org)

### EXECUTIVE COMMITTEE

#### Chairman

AJ Chrest, Aflac District Coordinator

#### 1st Vice Chair

Pete Wesner, CUNA Mutual Retirement Solutions

#### 2nd Vice Chair

Jerry Renk, American State Bank

#### Immediate Past Chair

Taylor Calcara, Watkins Calcara Chtd.

#### Treasurer

Austin Coyan, Adams Brown Beran & Ball

### BOARD OF DIRECTORS

#### Glenna Achatz

Coldwell Banker Sell Real Estate

#### Todd Armatys

Edward Jones

#### Rob Bauer

Bauer, Pike, Bauer, Wary & Carroll, LLC

#### Scott Dewerff

KanEquip

#### Logan Garrett

G-B Tire, Inc.

#### Nick Klug

Corrosion DC, Inc / Barton Co. Young Professionals

#### Julie Kramp

The Center for Counseling

#### Teresa Mazouch

Golden Belt Community Foundation

#### Quenla McGilber

JOYfulHouse Inc.

#### Jesse Mock

The University of Kansas Health Systems

#### Shelly Peacock

TCI Answering Service

#### Jon Prescott

Sunflower Diversified Services

#### Sonya Rein

Edward Jones / Chamber Ambassadors

#### Douglas Reiser

Central Kansas Surveying & Mapping Inc.

#### Lacey Schofield

Best Western Angus Inn

#### Julie Spray

The Fieldhouse

#### Rick Taylor

Nex-Tech, Inc.

#### Todd VanSkiel

Golden Belt Bicycle Company

### EX-OFFICIO

TBD, Great Bend City Council

Christina Hayes, Great Bend CVB

Jennifer Schartz, Barton County Commission

Dr. Carl Heilman, Barton Community College

Khris Thexton, USD 428

Tory Arnberger, Kansas State Legislature

### CHAMBER STAFF

Megan Barfield, President/CEO

Lee Ann June, Communications & Program Coordinator

Angie Hicks, Business Office Manager

## FREE E-WASTE RECYCLING



Does your *residence* or *business* have *electronics* in need of *safe and responsible recycling*?

Computers & Monitors  
Printers  
Fax Machines  
Laptops  
Televisions  
Video Game Consoles  
DVD Players  
VCR's & Cameras  
Cell Phones  
Telephone Equipment  
...and More!

## DROP-OFF LOCATIONS

Rosewood  
Maintenance Building  
2200 Main St., Great Bend  
Mon - Fri, 9:00 am - 4:00 pm  
Rosewood Bargain Barn  
1215 Main St., Great Bend  
Mon - Fri, 10:00 am - 6:00 pm

By recycling with us, you benefit your community, the environment, and you help create jobs for individuals with developmental disabilities.

You will receive a **tax deduction receipt** when you drop off unwanted electronics.

Rosewood ecycle  
2200 Main St.  
Great Bend  
South of the Dairy Queen!



CONTACT INFORMATION  
(620) 603-8348  
www.RosewoodServices.com

The Mission of Rosewood ecycle is to provide work-related training and employment opportunities to adults with developmental disabilities.

## Edward Jones Named One of the 2020 FORTUNE 100 Best Companies to Work For® by Great Place to Work® and FORTUNE Magazine

For the 21st time, Edward Jones is named one of the FORTUNE 100 Best Companies to Work For by Great Place to Work and FORTUNE Magazine. Edward Jones took the No. #7 spot on the prestigious list, the 16th year the firm has ranked in the top 10.

Great Place to Work®, a global people analytics and consulting firm, analyzed responses from more than 650,000 employees

at Great Place to Work-certified(TM) organizations across the United States. The firm evaluated more than 60 elements of team members' experience on the job. These included the extent to which employees trust leaders, the respect with which people are treated, the fairness of workplace decisions, and how much camaraderie there is among the team.

The Great Bend financial advisors are: Jim Vopat and Kris Sundahl.

Edward Jones, a Fortune 500 company headquartered in St. Louis, provides financial services in the U.S. and, through its affiliate, in Canada. Every aspect of the firm's business, from the investments its financial advisors offer to the location of its branch offices, caters to individual investors. The firm's 18,000-plus financial advisors serve more than 7 million clients and care for \$1 trillion in assets under management. Visit our website at [edwardjones.com](http://edwardjones.com) and recruiting website at [careers.edwardjones.com](http://careers.edwardjones.com). Member SIPC.

About Great Place to Work®

Great Place to Work® is a global people analytics and consulting firm that helps companies produce better business results by focusing on workplace culture. Powered by more than 30 years of research, Emprising®, its SaaS-enabled survey and analytics platform, gives companies access to the assessments, data and reporting needed to build a high-trust, high-performance culture.

# Edward Jones®

## MAKING SENSE OF INVESTING

## Adams, Brown, Beran & Ball Survey Supports Local Food Banks

Kansas – Families in five communities across Kansas will be able to put a little more food on the table thanks to business owners who responded to a survey conducted by the certified public accounting firm of Adams, Brown, Beran & Ball, Chtd. (ABBB).

ABBB was seeking feedback from the business community and offered to make a \$10 donation to a local food bank for every survey response it received. The firm ultimately was able to donate \$680 to five food banks in El Dorado, Hutchinson, Hays, Kansas City, and Wichita. Several of these food banks support neighboring cities and counties and have statewide efforts, as well.

"Supporting these food banks is emblematic of ABBB's commitment to give back to the communities it serves," said Brian Staats, CPA, CGMA, managing partner of the firm. "Throughout the year, ABBB team members across our locations give back by volunteering and through firm-wide half days of community service. This survey was another opportunity to help those in need."

Adams, Brown, Beran & Ball, Chartered provides a wide range of traditional and non-traditional CPA and consulting services to clients throughout Kansas, including agriculture organizations, construction companies, feed yards, financial institutions, governmental and not-for-profit organizations, manufacturers, medical practices, oil and gas companies, professional service firms, real estate companies and small businesses. Founded in 1945, today the firm maintains 15 office locations throughout the state. For more information about Adams, Brown, Beran & Ball, please visit [www.abbb.com](http://www.abbb.com).



Certified Public Accountants



# PURIFY YOUR AIR

with a whole-home air purifier

- Removes bacteria, viruses, allergens and dust from your home
- Attaches directly to your HVAC system to purify the air throughout your home
- Helps your family breathe easier through flu season, allergy season and more.

Still Open and Serving  
All of Central Kansas  
1-620-793-4208





# HIGHLIGHTED EVENTS IN APRIL

- 2... **Chamber Coffee: The Center for Counseling & Consultation, Virtual Coffee, Program @9:30am**  
 6... **Chamber Chat: Megan Barfield will be chatting with Tucky Allen, Business Services Director/Rapid Response Coordinator - Kansas WorkforceOne @ 2pm**  
 8... **Chamber Coffee: Great Bend Farm, Ranch & Hemp Show, Virtual Coffee, Program @10:30am**  
 10... Chamber Office Closed in Observance of Good Friday  
 12... Easter  
 13... **Chamber Chat @ 2pm**  
 13...Lake Barton Golf Course-Board Meeting, Lake Barton Golf Course Clubhouse, 673 US-281, 7:00-8:00PM  
 16... **Chamber Coffee: Virtual Coffee, Program @9:30am**  
 19...Lake Barton Golf Club-Men's Association Card Draw Tournament, Lake Barton Golf Course, 673 US-281, 1-5PM  
 20-25...National Library Week  
 20... **Chamber Chat @ 2pm**  
 23...Almost Home Ask the Expert, KVGB 1590 AM, 8:35AM-9AM  
 23... **Chamber Coffee: Straub Powersports, Virtual Coffee, Program @9:30am**  
 26... Lake Barton Golf Club-Bat Cat 4-Man Scramble, Lake Barton Golf Course, 673 US-281, 2:00-4:00PM  
 27... **Chamber Chat @ 2pm**

## Recurring Events:

Great Bend City Council Meetings, 1st & 3rd Mondays, City Hall, 1209 Williams St, 6:30p.m.  
 Barton County Commission Meetings, Every Monday, Barton County Courthouse, 1400 Main St, Rm 106, 9a.m.

**Please visit Facebook pages and websites for updates on meetings during COVID-19.**

<https://www.greatbendks.net/> <https://www.bartoncounty.org/>

STAY INFORMED AT [GREATBEND.ORG](http://GREATBEND.ORG)

**NOTICE OF CURRENT OFFICE HOURS:** Until deemed appropriate by local and state governing bodies the Great Bend Chamber of Commerce will be closed to the public. Phone calls and emails will still be answered. Call 620-792-2401 or email [gbcc@greatbend.org](mailto:gbcc@greatbend.org) for questions, concerns and resources.

## 2-1-1 Provides Resources to the Community

During times of uncertainty, Americans come together to support each other. COVID-19 is a new test of our collective strength. As social distancing and self-quarantining become the new normal, we're facing new economic challenges.

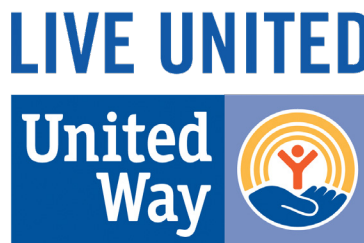
To support this rapidly escalating need, United Way Worldwide has created the COVID-19 Community Response and Recovery Fund. This Fund supports communities struggling in the wake of the new virus, by supporting local United Ways and 211, the go-to information resource in times of crisis. Every year, 211 specialists answer 12 million requests by phone, text, chat and email to connect people with disaster, food, housing, utility, health care resources and more. There is no other network in the country with a similar pulse on America's needs. So far, some 20 statewide 211 operations have been activated, and 211 is working closely with health officials all over the country to provide accurate updates to the public.

United Way of Central Kansas and our 22 Community Partners are a part of this network thanks to a partnership with United Way of the Plains, who provides this service for the majority of the State of Kansas.

They can be reached by calling 211, by texting 898211, or visit the website <https://211kansas.bowmansystems.com/>.

While a local fund has not been set up at this time, we are working closely with our Community Partners and other resources in our communities and will keep abreast of this rapidly changing situation. UWCK is working hard to ensure that we are there for our family, friends, and neighbors as we learn to navigate this situation together.

**NOTE:** You can dial 211 to speak to someone about local assistance at any time. The 1-866-211-9966 number you may have seen on social media is only available for residents of Indianapolis. Please be aware that financial assistance related to COVID-19 is not available for individuals everywhere.



## KansasWorkForceOne Discusses Rapid Response-Lay-Off Facilitation

### What is Rapid Response?

Rapid Response services provide support for workers and employers facing lay-offs to make the transition smoother for both. Once an employer determines that a lay-off of any size is necessary, the employer would contact Kansas WorkforceONE to schedule a Rapid Response Employee meeting.

Conducting the meeting prior to the separation date allows workers time to consider their options before the actual layoff date. During the meeting, the team will explain pertinent information to the employees who are facing the prospect of unemployment. In addition each impacted employee will receive a Rapid Response packet.

### How long do the meetings last and when would the meetings be scheduled?

The meetings last approximately one hour depending on the size of the group and the number of questions. The Rapid Response team will conduct multiple meetings if necessary and at times when it is most convenient for the employer and employees.

### What if we don't have time to conduct a meeting?

Kansas WorkforceONE will mail packets to either the employer for distribution or directly to the impacted employees.

### How many employees need to be affected to qualify for Rapid Response services?

Kansas WorkforceONE is dedicated to providing Rapid Response services to employers who are facing lay-offs of any size.

### Who is on the Rapid Response Team?

- Rapid Response Coordinator
- Local Workforce Innovation and Opportunity Act (WIOA) Employment Specialist
- Local KANSASWORKS Workforce Center Staff
- Kansas Unemployment Insurance Representative

### What information is provided in the packets?

- Local Resource Sheet
- Dislocated Worker WIOA Program Overview—resources for training and other services designed to assist in their



## YOUR FAMILY EYECARE CENTER



Dr. Russell B.  
**McCaulley**



Dr. Chad  
**Premer**



Dr. Nicole  
**Miller**



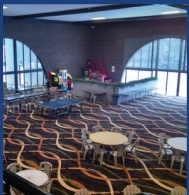
Dr. Sarah  
**Stueder**



- Indoor Pool & Hot Tub
- Fitness Center
- Business Center
- Free Wi-Fi
- Free Netflix



- Mini Fridge, Coffee Maker, Microwave & Iron in Each Room



- Two Restaurants & Bar On Site
- Indoor Courtyard, Perfect for hosting reunions, parties & vendor shows!



**Best  
Western.**

GREAT BEND, KANSAS  
2920 10th Street • (620) 792-3541  
Take a virtual tour at [bwangus.com!](http://bwangus.com!)  
**620-792-3541**

# GREAT BEND

## CHAMBER OF COMMERCE

### UNDERSTANDING THE *Small Business Loans* AVAILABLE THROUGH THE CARES ACT

EIDLs	LOANS	PPP
<b>Economic Injury Disaster Loans</b> <b>\$10B Available</b>		<b>Paycheck Protection Program</b> <b>\$349B Available</b>
<b>ABOUT</b>		
EIDLs are administered and approved by the U.S. Small Business Administration (SBA).		In the PPP, loans are backed by the SBA through local lenders.
<b>ELIGIBILITY</b>		
<ul style="list-style-type: none"> <li>• Small businesses (&lt;500 employees)</li> <li>• Sole-proprietors</li> <li>• Independent contractors</li> <li>• 501(c)6 organizations &amp; more!</li> </ul>		<ul style="list-style-type: none"> <li>• Small businesses and non-profits (&lt;500 employees)</li> <li>• Sole proprietors</li> <li>• Self-employed &amp; freelance workers</li> </ul>
<b>FINANCING</b>		
<ul style="list-style-type: none"> <li>• Maximum Granted: \$2M</li> <li>• Interest: 3.75% (2.75% for non-profits)</li> <li>• Duration: Up to 30 years</li> <li>• Deferment options available</li> </ul>		<ul style="list-style-type: none"> <li>• Maximum Granted: Lesser between 2.5X Payroll or \$10M</li> <li>• Interest: 4%</li> <li>• Duration: Up to 10 years</li> <li>• Defer for 6-12 mo.</li> </ul>
<b>KEEP IN MIND</b>		
EIDLs offer a bridge loan program of \$10,000 to cover immediate costs & is forgivable if certain criteria are met.		<ul style="list-style-type: none"> <li>• No personal or collateral guarantee is required.</li> <li>• Forgiveness granted if funds are used on operating expenses within 8 weeks of receiving.</li> </ul>
<b>APPLY</b>		
<b>HOW</b> Apply at <a href="http://www.sba.gov/disaster">www.sba.gov/disaster</a>		<b>HOW</b> Apply with an SBA-approved lending institution.
<b>WHEN</b> Available now!		<b>WHEN</b> Available Soon! See local lender for details.

## ★ ★ ★ PRO TIPS

1. Both loans can be applied for (and granted!) if funds cover different expenses
2. For fastest approval, be prepared to specify your economic loss due to COVID-19
3. Be aware of fraudulent schemes and only discuss finances with a trusted professional

Visit us online at **greatbend.org**



to get the latest COVID-19 resources, view our membership directory, and check out what benefits we have to offer your business!



# We are HERE for YOU!

## To Our Chamber Members,

Today, and every day, we thank you for your membership and continued support. We love seeing you at chamber coffees, ribbon cuttings and big events, and right now while those activities can't happen, please have confidence that: Our Great Bend Chamber team is here for you in all seasons of business. We know this pandemic has impacted you in major ways and we are here to help.

Below is a checklist of things to consider along with an infographic explaining, in simple terms and format, the two available loan options available through the CARES Act. Breaking down an 800+ page document, our goal is to provide you with key information that enables you to understand the possibilities, make decisions, and most importantly, get back to your business!

Please share this information (either in print or digitally) with a fellow business owner in your circle, so that when this passes, our community is stronger and more connected than ever.



With Gratitude & Certainty For Better Days Ahead,

Megan Barfield

President & CEO

*With the impacts of COVID-19 on our local business community already in effect, in addition to good hand hygiene and common-sense precautions with your employees and patrons, the Great Bend Chamber of Commerce encourages all local businesses to consider the following:*

**1. For your business:** Prepare for negative economic impacts.

- o Capital: Create, confirm, or expand your line of credit.
- o Staffing: Develop staffing plans for varying levels of customers and revenue (what does an 80% scenario plan look like?).
- o Insurance: Check with your insurance provider to understand your coverage and options.
- o Update your Member Directory Listing by accessing the Member Information Center.  
Why is this important? **Website traffic to greatbend.org is up 650% translating to nearly 2,500 visits per week.** Help people find YOU and your information.
- o Add deals, sales, promotions to the NEW Hot Deals now visible to all who visit our website. Access your Member Information Center to create Hot Deals.

**2. For your customers:** Make your place of business as hygienic as possible and communicate what you are doing to customers so they feel comfortable visiting.

**3. For your employees:** Check, modify, and communicate HR policies regarding remote working, sick-leave, and compensation during health crisis. Try to ensure your policies are as flexible and non-punitive as possible. Sick employees should be encouraged to stay home.

**4. For your workflow:** Cross-train employees for key functions so that daily schedules can continue relatively uninterrupted by potential employee absences. Where relevant, consider staggering start and end times to reduce large numbers of people coming together at the same time; and create and test remote employee collaboration systems (consider apps such as Slack and Zoom).

**5. For your cashflow:** Communicate with your landlord (or tenants) and lenders about expectations and request flexibility (better to have that conversation now).

**6. For yourself:** Eat well, sleep, and exercise. Taking care of yourself in this time of stress will improve your resistance to infection and resilience in managing difficult business situations. And of course, wash your hands all the dang time and don't touch your face, or anyone else, for that matter.

**7. For your Chamber:** For us to best serve you, we need to know and share what our members are doing to manage

## Coronavirus (COVID-19) Information

### COVID-19 Update:

To keep patients, staff and you safe from infection, with limited exceptions, we are not currently allowing visitors. Be sure to visit <https://www.gbregional.com/coronavirus-covid-19-information> for the latest updates.



THE UNIVERSITY OF  
KANSAS HEALTH SYSTEM

The rise of novel coronavirus (COVID-19) is a global, national and local concern. We want to assure our patients and the community that The University of Kansas Health System is working closely with local, state and federal health officials to prepare.

### Our top priority is keeping our patients, visitors and staff safe.

Our team treats patients with several respiratory illnesses every day. We have the training, tools and techniques in place to isolate and care for patients who are potentially at risk for COVID-19 following the guidelines identified by the Centers for Disease Control and Prevention.

We encourage family and friends to return home to await news of their loved one. You may wait in your vehicle if you wish. Any visitor who has a fever or other cold or flu-like symptoms will not be allowed in our facilities. Unless you have a scheduled pediatrics appointment, visitors under age 14 will not be allowed in the clinic until further notice.

Out of concern for the safety of patients and staff, and due to COVID-19 event, the Great Bend Campus Medical Records and Patient Billing information will no longer be available for pick up in person.

Medical Records: Please call 620-791-8010 to discuss options for delivery of information.

Patient Accounts: Please call 620-791-6844 to discuss options for delivery of information.

### What to do if you are feeling ill.

Contact your doctor's office or urgent care center if you think you have symptoms or have been exposed.

Call before you arrive at your doctor's office or urgent care center

Let your doctor's office know about your symptoms. COVID-19 symptoms include:

fever

coughing

shortness of breath

Also let your doctor know if you have:

been in close contact with a person known to have COVID-19

have traveled to an area with sustained transmissions.

Avoid going to the Emergency Department unless instructed by your doctor.

Preventing the spread of respiratory diseases, including the flu and COVID-19

Remember the everyday basics from the Centers for Disease Control and Prevention (CDC):

Wash your hands often with soap and water for at least 20 seconds, or use alcohol-based sanitizer

Avoid touching your eyes, nose and mouth

Avoid close contact with sick people

Clean and disinfect regularly

Stay home when you are sick

The CDC does not recommend people who are well wear facemasks to prevent exposure to COVID-19 or other respiratory diseases. Masks should be worn by people who show signs of the disease, so they can prevent the spread of the disease to others. Read more about the CDC's recommendations.

### Things to consider if planning a visit to the hospital

To prevent the spread of seasonal flu, intestinal viral illnesses and other infectious diseases in our communities, please follow these guidelines:

Do not visit the hospital if you or members of your household are sick, especially from upper respiratory infection (coughing, sneezing, congestion) or gastrointestinal illness (vomiting, nausea, diarrhea).

Note that intensive care, maternity units and other areas of the hospital have specific visiting guidelines.

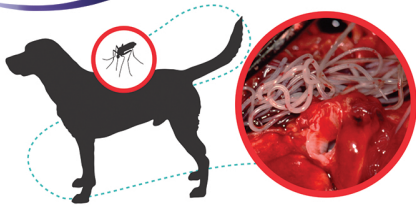
Wash your hands or use hand sanitizer visiting patients.

Please ask for a mask while visiting our Emergency Department.

Thank you for helping us keep our patients, visitors and communities healthy.



620-792-1265



## HEARTWORM AWARENESS MONTH

**\$5 OFF**

Heartworm tests

\*ProHeart injections

Fecal exams

\*\*Interceptor

**COMBINE & SAVE \$20**

Purchase Of Prevention is required

\* Manufacturer Discount

\*\* When Buying 12 Months Worth



Phone: **620-792-5700**

1905 19th Street in Great Bend, Kansas

## Family Practice, Behavioral Health & Dental Services

Preventative Care

Prescription Assistance

Diabetes Management

Evening Appointments

Open to Everyone

Bilingual Staff

All Insurance Accepted

Including Medicare, Medicaid & KanCare

*"We Care About Your Health"*

**www.HeartofKansas.com**



## New Hires and Promotions:

### Farmers Bank and Trust Promotes Cairney

Farmers Bank and Trust is pleased to announce the promotion of Martin Cairney to Assistant Operations Officer. Martin has proven himself as very valuable member of the Operations team over the past seven years, during which he assumed various roles. Bobbi LaViolette, VP Operations Officer stated "Martin is a hard-worker and is able to tackle any challenge. His willingness to help customers and co-workers with patience and professionalism has made him a great asset to our team." Martin has taken over Physical Security, Merchant Services, Merchant Capture/Cash Management oversight and training, and is always willing to step up and help where he is needed. We look forward to seeing Martin's continued growth with our organization.



**Martin Cairney**

Martin and his wife Kourtney live in Great Bend with their daughter, Isla. If you talk to Martin, you will quickly realize he did not grow up around here. Robert Rugan, Central KS Market President commented, "Martin, our local "Scotsman", is a native of Scotland and customers just love his accent. He is gregarious and his friendly personality is definitely contagious."

Farmers Bank & Trust operates with a strong capital account of \$169 million and total assets of \$877 million with locations in Great Bend, Albert, Lacrosse, Bazine, Kinsley, Larned, Olathe, and Overland Park.

### American State Bank announces new Agribusiness Lender

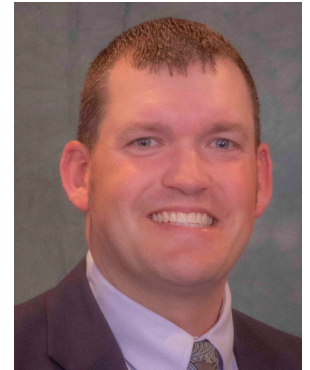
American State Bank is proud to announce Ryan Rewerts has joined the bank as Agribusiness Lender/Credit Analyst in the Great Bend area. Rewerts most recently worked in banking in the St. John area.

"Ryan brings 10 years of banking experience and over 25 years of ag experience to American State Bank," said Doug Thurman, President/CEO. "We are excited to add someone with his love of agriculture and knowledge of western Kansas to our team."

Rewerts has been active in the Stafford Education Foundation and Stafford Economic Development Organization. He is a graduate of Stafford High School and Kansas State University.

"I'm excited to join the team at American State Bank," Rewerts stated. "There is a great group of fellow employees here as well as some wonderful customers that I cannot wait to work with and serve."

Rewerts will office at the Great Bend branch on Main Street as well as serve the region.



**Ryan Rewerts**

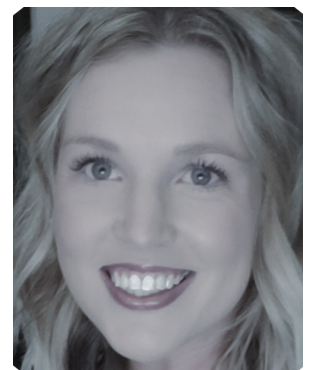
### QS Nurses Promotes from within and Welcomes New Staff

Dee Dee comes to QS with an enormous amount of nursing experience to include over 16 years of experience as a Director of Nursing in Skilled Rehab & Nursing facilities, 8 years of experience as a State of Kansas Surveyor, performing QIS and complaint surveys for both Skilled facilities and Assisted Living facilities throughout Kansas and over 3 years' experience as an MDS 3.0 Coordinator. She is known for her positive attitude and team building experience. She truly believes that if QS Nurses has "happy staff" then everything will flow into place and the business will flourish! Dee Dee states, "The most impressive thing about QS Nurses is the feeling of family that is alive from our awesome office staff to the many amazing nursing field staff. I have found an amazing work environment with a family atmosphere and all is well with my soul."



**Denise (Dee Dee) Brull**

Micca previously worked as a Social Worker before joining the QS Nurses team. With her love of helping others, she knew this position would be a great fit. Micca loves to meet new people. Getting to build connections with our staff and meeting new candidates is the highlight of her day. Micca states, "I want everyone in the QS family to be successful and meet all their employment goals. I will go above and beyond to help make that happen!" We are thrilled to have Micca on the QS



**Micca Gutierrez**

team and when you talk to her, you'll know why!

*Congratulations!*

## Ambassador Profile - Michael Adamyk, CKLS



### **What brought you to Great Bend? What keeps you here?**

I came to Great Bend to work at the public library in May 2018. I didn't know anyone or have any prior connections here, but I grew up in Windom and McPherson, so it's not too far from home.

I am part of several amazing communities between work, the Chamber, and church, and those communities and relationships make this place special. There are also great opportunities for learning, growth, and leadership!

### **Where do you work and what do you do there?**

I work for the Central Kansas Library System (CKLS). We serve 17 counties in Kansas, and our mission is to provide library service where none exists (such as rural areas) and improve library service where it does exist. My role is not exactly IT, but rather more of a software manager. My primary duty is to maintain, troubleshoot, and improve the software that our libraries use for most of their services. As with any small organization, I wear many other hats as needed, and regularly assist the system consultants with other projects.

### **What's one thing about you that would surprise people?**

I've got lots of different interests, and find I have a curiosity about practically everything. From music, theatre, and drawing, to computers and technology, to psychology, politics, and history, to various sciences, and more.

### **What energizes you and brings you excitement?**

I love finding solutions to problems and restoring things that are broken. I love seeing people grow and learn, and to be part of that mentoring process. I also love the world of ideas (especially theory), and learning in general.

### **At what job, would you be terrible?**

Anything outdoors in the fall. Thanks, ragweed.

### **How long have you been a Chamber Ambassador and what do you like most about it?**

This is my second year as a Chamber Ambassador. The best part about it is the people you meet, and learning what makes each person and business unique. It's also a great way to get out into the community and learn what Great Bend has to offer to everyone.

### **About Chamber Ambassadors:**

The Great Bend Chamber of Commerce Ambassador Club is made up of 30 men and women from the Great Bend business community who represent the Chamber as volunteers. To find out how you can become a member of the Ambassador Club, contact the Chamber: 620-792-2401.

## Rapid Response—Lay-Off Facilitation Continued from Page 5

employment search.

- Workforce Center Resource Sheet
- One-Stop brochures
- Job Search Workbook
- Pocket Resume
- Pension and Health Care Coverage Booklet
- Unemployment Insurance Question and Answer booklet
- Healthwave Brochure
- Prairie Foods Information
- Additional Information for local areas (i.e. partner information, schools, etc.)

**What additional services are available through Rapid Response?**

• Guidance in obtaining funding assistance to avert lay-offs

• Training funds may be available to train employees who would be laid off without a skill upgrade

• Holding customized workshops on coping with

job loss, resume writing, and interview skills

• Conducting special Job Fairs.

**To inquire about Rapid Response Services:**

**Tucky Allen—Business Services Director**

**Phone: 316-303-2906**

**Email: tucky@kansasworkforceone.org**



### Welcome 2020 Tournament Teams

- April 18 USSSA Softball (8U-14U)
- April 25-26 Hap Dumont Baseball Points (7U-14U)
- April 29-May 2 KCAC Championships -Baseball/-Softball
- May 28-29 KSHSAA 2A-1A State Baseball Championships
- May 30-31 USA Softball (Tentative)
- June 6-7 June Jaunt Hap Dumont Points (8U,10U,12U,14U)
- June 13-14 USSSA Softball (8U-18U)
- June 27-28 Hap Dumont Baseball (7U,9U,11U,13U)
- July 10-12 Hap Dumont 11U State Baseball



Great Bend Rec  
1214 Stone Street  
620.793.3755  
www.greatbendrec.com  
facebook.com/greatbendrec

### 9<sup>TH</sup> ANNUAL GREAT BEND FARM, RANCH & HEMP EXPO



### April 8-10, 2020

www.greatbendfarmandranchexpo.net

### VIRTUAL Farm, Ranch & Hemp Expo





# David Meter named 2020 Athletic Director of the Year

Acknowledging vision and passion for athletics, as well as exceptional leadership skills, David Meter has been selected as the 2020 District 1 Athletic Director of the Year.

Awarded by the Kansas Interscholastic Athletic Administrators Association, the Interscholastic Athletic Administrator Award is a mark of excellence and achievement. Meter was selected from 136 school districts in Central and Western Kansas.

A longtime employee at USD 428, Meter taught and coached in Great Bend for ten years before becoming the Principal at Park Elementary. In 2000, he became the Athletic Director at Great Bend High School, where he has continued to serve for the past 20 years.

"David's honesty, integrity and tireless work ethic are just a few of the traits that make him very deserving of this award," said Tim Friess, principal of GBHS. "David has done more for GBHS Athletics and Activities than anyone that I have had the privilege to work with in my 37 years, we are privileged and honored to have David Meter as a colleague."

Through his career he previously served as President of the Western Athletic Conference, a former member of the KSHSAA Board of Directors, and also a former member of the KIAAA Board of Directors. Meter has been involved with many renovations to Great Bend's athletic department including upgrading the GBHS weight room, installation of swim scoreboard and electronic timing at BCC, tennis court renovation at Veterans Memorial Park, construction of the Panther Athletic Center, Memorial Stadium turf football field and grandstand improvements, new gymnasium at GBMS, and the addition to the GBHS auditorium. Meter received the ROSE Award from USD 428 and is a two-time recipient of the SW KMEA Outstanding Administrator Award. Meter is also a member of the Kansas and National Interscholastic Athletic Administrators Associations of which this award is being presented.

On a personal level, Meter considers himself 'blessed' to work with many quality students, staff, parents, and community members for the past 41 years. He is married to his wife Cindy and has one son Brent who resides in the Kansas City area.

"He says 'he is blessed' to work with us when, truly, he is the blessing.," said Friess.

Khris Thexton, superintendent for USD 428, echoed Friess accolades, adding, "I appreciate David's professionalism as an administrator for our district, his desire to provide an outstanding experience for our students and staff is evident in all that he does."

Meter will receive the award at the Kansas Interscholastic Athletic Administrators Association State Convention on Saturday, April 4 in Manhattan, Kan. Notes of congratulations can be sent to Meter's attention at Great Bend High School, 2027 Morton St. Great Bend.



Selected from 136 school districts and peers in Central and Western Kansas, David Meter has been named the 2020 District 1 Athletic Director of the Year. Meter's career in Great Bend includes over 41 years of service, 20 of which has been at the helm of the Great Bend High School Athletic Department. Meter will be presented with the award at the Kansas Interscholastic Athletic Administrators Association State Convention on Saturday, April 4 in Manhattan, Kan.

## GREAT BEND CHAMBER OF COMMERCE

### WELCOME to Our **NEWEST** Chamber Members

#### MIKE & ICE

Paula Daniels, Owner  
mikeandice620@gmail.com  
1919 Lakin Ave  
Great Bend, KS 67530  
(620) 617-0298

**Beverage Distributors**

#### GALLAGHER BENEFIT SERVICES

Mike Minton, Owner  
Great Bend, KS 67530  
(620) 617-8007

**Financial Services**

### WANT TO JOIN THE CHAMBER?

If your company is interested in joining the Great Bend Chamber of Commerce, fill out the online application on our website: [www.greatbend.org](http://www.greatbend.org). Membership is quick and easy to get started, and it is affordable, too!

You can also sign up to attend one of our Chamber Member Orientation & Marketing Services Seminars. These seminars happen throughout the year. Members are encouraged to send at least one team member to get acclimated and stay up-to-date on the free or low-cost marketing opportunities available through the Chamber. Watch for Virtual Seminars & Online Content.

**Sign up on our website:**

[www.greatbend.org/  
eventregistration](http://www.greatbend.org/eventregistration)



**CELEBRATING OVER 54 YEARS  
OF SERVING PEOPLE WITH  
DEVELOPMENTAL DISABILITIES!**

*There is a Difference.*

EARLY EDUCATION  
CASE MANAGEMENT  
DISABILITY SUPPORTS  
RESIDENTIAL ASSISTANCE  
COMMUNITY EMPLOYMENT  
RECYCLING & MANUFACTURING  
GENERAL PUBLIC TRANSPORTATION  
& MUCH MORE!

**620-792-1325**  
**WWW.SUNFLOWERDIV.COM**

## **Hutchinson Clinic Physicians Serving the Great Bend, Hoisington & Ellinwood Areas**

### **GREAT BEND:**

Hutchinson Clinic Great Bend / 3715 6th Street  
Dr. Jamil Ahmed, Cardiologist  
Dr. Aaron Thiessen, Ear Nose & Throat  
Dr. Curt Thompson, Interventional Radiologist  
Natalie Williams, PA, Pulmonology

### **ELLINWOOD:**

Ellinwood Medical Clinic / 611 N. Main  
Dr. Jamil Ahmed, Cardiologist

### **HOISINGTON:**

Clara Barton Medical Clinic / 250 W 9th St  
Dr. Costy Mattar, Cardiologist  
Dr. Christine Sanders, OBGYN  
Dr. Curt Thompson, Interventional Radiologist

**Exceptional Care Close to Home**



**Call for an appointment: 620-669-2500**  
**www.hutchclinic.com**

# **VIRTUAL CHAMBER COFFEE SCHEDULE**

**Every Thursday | Tune in on Facebook | Program at 9:30am**

**April 2, 2020**

## **THE CENTER FOR COUNSELING AND CONSULTATION**

The Center for Counseling and Consultation is the licensed community mental health center (CMHC) for Barton, Pawnee, Rice and Stafford Counties and offers a wide range of services including individual and family counseling, medication consultation, addiction assessment and recovery, case management and peer support.

**April 8, 2020**

## **GREAT BEND FARM, RANCH & HEMP EXPO**

Celebrating its 8th Anniversary, the Great Bend Farm, Ranch, and Hemp Expo will have a virtual LIVE feed on April 08, 09, and 10. Opening Ceremonies @ 10:30am on April 8th.

[www.greatbendfarmandranchexpo.net](http://www.greatbendfarmandranchexpo.net) & [virtualfarmexpo.com](http://virtualfarmexpo.com).

**April 16, 2020**

## **GREAT BEND CHAMBER OF COMMERCE**

The Great Bend Chamber of Commerce will promote and improve the business climate in the city of Great Bend through its services and partnerships that encourage growth and assist existing and new businesses in reaching their business goals.

**April 23, 2020**

## **STRAUB POWER SPORTS**

Straub's Powersports is a family oriented dealership company that pledges to operate with honesty, integrity and loyalty. Our mission is to provide quality products and services which meets our customer's needs at a mutually beneficial price. This will ensure the financial strength and stability for all concerned.

At Straub's Powersports you will find new and used Polaris® ATVs, Rangers, RZR's, and Sportsmans. We strive to meet all of your powersport needs. Our parts and services department are also ready to help keep your Polaris® ATV, Ranger, RZR, or Sportsman in top running condition.

**April 30, 2020**

## **GREAT BEND CHAMBER OF COMMERCE**

The Great Bend Chamber of Commerce will promote and improve the business climate in the city of Great Bend through its services and partnerships that encourage growth and assist existing and new businesses in reaching their business goals.

**May 7, 2020**

## **GREAT BEND ZOOLOGICAL SOCIETY**

The Great Bend Zoological Society is a 501(c)(3) not-for-profit organization dedicated to supporting Great Bend's Brit Spagh Zoo and promoting educational and conservation efforts. Whether raising funds for special projects, helping obtain new animals, volunteering at the Zoo, or just spreading the word that we have a great facility, our Board of Directors and members believe in the importance of our Zoo.

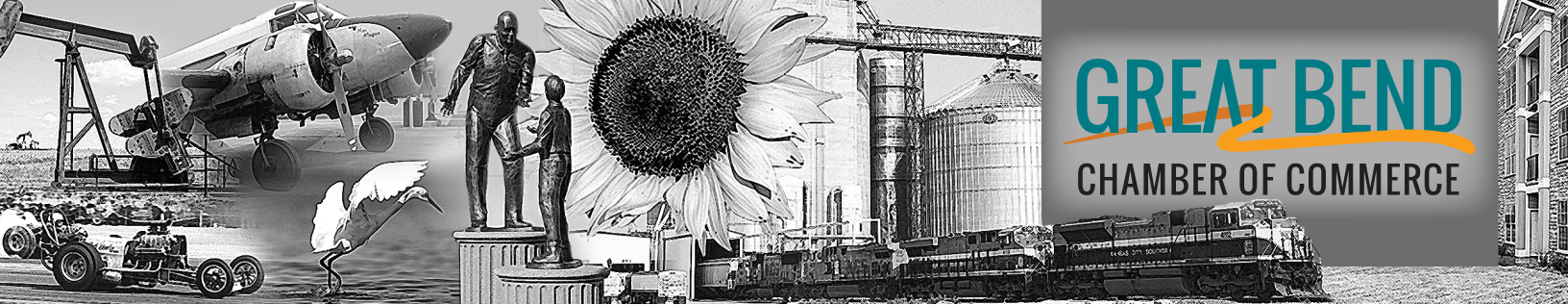


3307 10th Street • Great Bend, KS 67530

**McDonald's**

is providing coffee for Chamber of Commerce coffees.



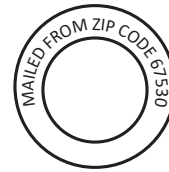


**GREAT BEND**  
CHAMBER OF COMMERCE

# OUTLOOK BUSINESS JOURNAL

Great Bend Chamber of Commerce  
1125 Williams Street  
Great Bend, KS 67530

- RETURN SERVICE REQUESTED -



PRESRT STD  
U.S. POSTAGE  
PAID  
PERMIT NO. 4

*Chamber Chat*  
**LIVE**

MONDAYS @ 2PM ON FACEBOOK & YOUTUBE

THURSDAYS @ 9:30 AM  
ON FACEBOOK & YOUTUBE



*Chamber Coffee*  
**LIVE**

Like & Share

DOWNLOAD THE  
**MEMBER PLUS**  
MOBILE APP TO  
UPDATE YOUR  
COMPANY'S  
ONLINE PROFILE  
ON THE GO



FIND MORE RESOURCES INSIDE ON  
**PAGES 6 & 7**

*We are HERE for you!*