



MARCH 2018 • VOLUME 97 NO. 3

OUTLOOK BUSINESS JOURNAL

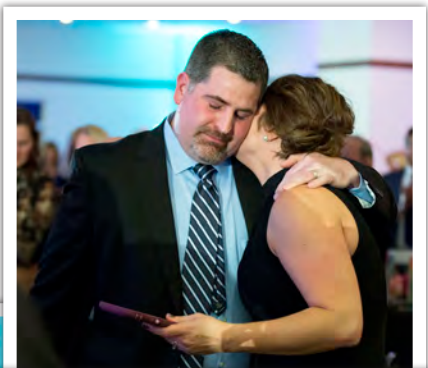
A MONTHLY PUBLICATION OF THE GREAT BEND CHAMBER OF COMMERCE AND ECONOMIC DEVELOPMENT

CHAMBER AWARD WINNERS RECOGNIZED DURING 96TH ANNUAL CHAMBER MEETING & BANQUET

Last month, the Great Bend Chamber of Commerce & Economic Development hosted its 96th Annual Meeting & Banquet at the Great Bend Events Center. The event's theme was "The Art of Community," and featured several remarks from outgoing and incoming leadership for the Chamber Board of Directors and Ambassador Club. Following a social hour, a delicious steak dinner was catered by A&G Catering, owned by Alan and Gail Moeder, with an on-stage painting created live by Miss Kansas Contestant Annika Wooten. Jon Prescott served as emcee.

As is tradition during the semi-formal event, the Chamber presented a number of awards to deserving volunteers in our community. Overwhelmingly, this year's winners shared a common theme of investing in the community and the people who live here. The first award of the evening was the Business of the Year, which recognized the Great Bend Children's Clinic owned by Dr. Marta Edmonds and Dr. Ryan Williams. NextGen Leader of the Year award was next, and was awarded to local investor Jason Mayers (pictured top right).

With a heartfelt acceptance speech, Mark Mingenback received the Citizen of the Year award for lifelong dedication to improving the Great Bend community (pictured middle right). And last but not least, the Kids Ag Day event and its numerous volunteers received the Legacy Award for 25 years of dedication to agricultural education (pictured bottom right). Read more about these award winners on the Chamber website, or see their feature articles in the Great Bend Tribune or on the Great Bend Post.



READ THEIR STORIES: WWW.GREATBEND.ORG

AWARD WINNERS RECOGNIZED

Continued from Page 1

Small to medium businesses are now the
#1 TARGET
of cyber criminals.

Nex-Tech is dedicated to protecting your business.



Contact us today for a FREE Risk Assessment.

800.588.6649 • nex-tech.com/business

MEET OUR OB DOCTORS AT HEARTLAND REGIONAL HEALTH CLINIC



Dr. Jodi Henrikson



Dr. V. Annapurna

Drs. Annapurna and Henrikson are currently accepting new OB patients as well as patients needing well woman exams or experiencing other gynecological issues.



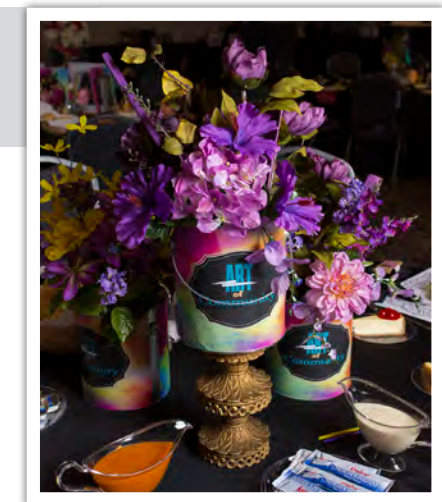
Heartland Regional Health Clinic
Obstetrics/Gynecology
620-792-2151

Great Bend REGIONAL HOSPITAL
A Physician Owned Hospital



514 Cleveland Street | Great Bend, Kansas | www.gbregional.com

The theme for this year's banquet was "The Art of Community" and decor was created by Divine Arrangements Events & Designs.



Miss Kansas Contestant Annika Wooten creating a painting live on stage at the banquet, which was then auctioned off later in the evening.

2017 Award Winners: Mark Mingenback, Citizen of the Year; Kids Ag Day, Legacy Award; Jason Mayers, NextGen Leader of the Year; Great Bend Children's Clinic, Business of the Year.



The National Anthem was sung by Brad Shirer (ABBB), & Jon Prescott served as emcee (Sunflower Diversified Services).

The largest gathering of our members, and an excellent networking opportunity, this year's banquet also included a High School Art Contest featuring works of art created by local high school students. Community Champion was Sayra Solis. The performing arts were also represented with several live performers.



MORE PHOTOS COMING SOON: VISIT THE FACEBOOK PAGE FOR THE GREAT BEND CHAMBER OF COMMERCE & ECONOMIC DEV.

Dillons Celebrates Re-Opening of Remodeled Store

January was brought to a close with the much anticipated Re-Grand Opening of the 10th Street Dillons and they did not disappoint! A crowd was present as Colleen Juergensen, Dillons Stores president and Great Bend native welcomed everyone and spoke of the recent store renovations; which included the addition of a Starbucks coffee kiosk, very noticeable as one walks into the newly decorated store.



In addition to the popular Starbucks, Dillons remodel boasts many enhancements throughout the store. A few examples include:

- New produce department with expanded selections garden-fresh produce, including organic varieties and salad bar
- Enhanced offerings of fresh meat and seafood with added emphasis on selection and service
- Expanded offerings of natural and organic foods
- New Pharmacy with private counsel rooms
- New Floral department with beautiful arrangements by the creative talents of Dillons florists
- New check-lanes and familiar conveniences at Customer Service
- New fresh décor package with warm colors, upgraded department markers, and energy-efficient ambient lighting
- New energy-efficient freezers and refrigerated cases throughout the store
- Soothing atmosphere in the health and beauty sections with beautiful wooden showcases and new overhead directional signs
- Enhanced frozen food and grocery offerings with a focus on quality store brands, including its new budget-friendly line, Kroger Value

“Remodels of this magnitude are never easy, but we worked together each and every day... and the results are completely worth it!! Our team has really pulled together and I could not be more excited for today,” commented Ryan Streck, Store Manager. Streck has an overwhelmingly positive reputation with the Great Bend community and was clearly proud of his team and thankful to the store’s customers.

To add to the excitement Streck, along with Sheila Lowrie, Dillons corporate affairs manager, presented checks to both the Central Kansas United Way and Great Bend Police and Fire Departments. Gaila Demel, Executive Director, accepted a \$15,500 on behalf of the United Way, while Chief Bailey and Chief McCormick accepted checks for \$500, respectively, for the Police and Fire Departments. These dollars are thanks to our local associates working in Great Bend and a corporate donation from Dillons.

Dillons has made significant investments into the Great Bend community and invites everyone to shop local and enjoy the welcoming atmosphere at your new Dillons!



Outlook Business Journal

A monthly publication of the

GREAT BEND
CHAMBER OF COMMERCE
& ECONOMIC DEVELOPMENT

1125 Williams,
Great Bend, KS 67530
Phone: 620-792-2401
Fax: 620-792-2404

Web address: www.greatbend.org

EXECUTIVE COMMITTEE

Chairman

Taylor Calcara, Watkins Calcara Chtd.

Vice Chairman

AJ Chrest, Aflac District Coordinator

2nd Vice Chairman

Brandon Lawellin, Sutherlands

Immediate Past Chairman

Paul Snapp, First Kansas Bank

Treasurer

Taylor Dirks, Adams Brown Beran & Ball

BOARD OF DIRECTORS

Aaron Andrews

MPIRE Realty Group

Todd Armatys

Edward Jones Investments

Cindy Brooke

Heartland Taxes / Ambassador Club

Austin Coyan

Adams Brown Beran & Ball / Young Professionals

Gaila Demel

United Way of Central Kansas

Rebecca Ford

Catholic Charities of Southwest Kansas

Casey Harbour

Watco Companies

Diann Henderson

Great Bend Recreation Commission

Teresa Mazouch

Wheatland Electric Cooperative

Dr. Scie Murray

Murray Chiropractic Center

Jon Prescott

Sunflower Diversified Services

Lacey Schofield

Best Western Angus Inn

Julie Spray

The Fieldhouse

Nancy Sundahl

Mary Kay Cosmetics

Rick Taylor

Nex-Tech

Pete Wesner

CUNA Mutual Retirement Solutions

EX-OFFICIO

Vicki Berryman, Great Bend City Council

Christina Hayes, Great Bend CVB

Jennifer Schartz, Barton County Commission

Dr. Carl Heilman, Barton Community College

Khris Thexton, USD #428

CHAMBER STAFF

Jan Peters, President/CEO
jpeters@greatbend.org

Andrea Bauer, Director of Business Development
abauer@greatbend.org

Megan Barfield, Member Relations Coordinator
mbarfield@greatbend.org

Kim Wiens, Business Manager
kwiens@greatbend.org



Website Design
Video Production
Facebook Marketing
Logo Design
Business Cards
Brochures & Rack Cards
Postcards & Flyers
Advertising Design
& Lots More!

SEE SAMPLES & PRICING AT
MARKETINGMAVENCONSULTING.COM
 CALL TODAY: 620-786-4896



Gleason Landscaping Opens in Great Bend

In February, the Chamber was excited to welcome Gleason Landscaping to Great Bend and to the Chamber of Commerce! Sean Gleason and his wife, Haley, moved to Great Bend from Hays and he is ready to serve the area with their landscaping needs. His services include yard landscape design, implementation, and maintenance of many features such as ponds, fountains and other water features, pergolas, shrubs and more. Be sure to find Gleason Landscaping on Facebook and contact Sean at gleasonlandscapingks@gmail.com or by phone at (620) 282-4597.



Annual Farm & Ranch Expo Approaches Apr. 4-6

Great Bend has a rich history in the agricultural trade show business. But since 2012, that reputation has been improved and expanded with the Great Bend Farm & Ranch Expo. The 6th Annual event is coming up April 4-6, 2018 at the Great Bend Expo Complex, where hundreds of exhibitors from 27 states and Canada and Australia spread out over 80 acres at the Great Bend Expo Complex located 2.5 miles west of Great Bend's City limits. Show hours are 9 a.m. to 5 p.m. Wednesday, 9 a.m. to 7 p.m. Thursday, and 9 a.m. to 4 p.m. Friday. Daily entertainment, demonstrations, giveaways, and concessions draw thousands of producers, ranchers, and agriculture professionals from all over the Midwest for this world class exposition.

The Great Bend Farm & Ranch Expo is a proud member and partner with the Great Bend Chamber of Commerce & Economic Development. The Expo is brought to you by these fine sponsors: The Great Bend CO-OP, KSN, and The American Hat Company. If you are interested in volunteering or in purchasing an exhibit space, contact the show office at 866-685-0989, cell 785-332-6506, or visit the show website anytime at www.greatbendfarmandranchexpo.net. The Great Bend Farm & Ranch Expo provides a significant boost to our local economy. The Chamber would like to encourage local businesses to participate in the show and prepare to welcome visitors from across our region!



**YOUR PROBLEM
 IS NO PROBLEM**



HEATING



COOLING



PLUMBING

TOLL FREE: 800-937-3030
COMFORTPROKS.COM

CoMfortPro Inc.



HIGHLIGHTED EVENTS IN MARCH

- 1... Chamber Coffee & Ribbon Cutting: Magna Dry, 2646 Main St. @ 9 a.m.
- 3... Sunflower Diversified Annual Charity Gala, Great Bend Events Center @ 5:30 p.m.
- 5... Dilly & Doc Creative Studio St. Patrick's Day Class, 1119 Main St. @ 7 p.m.
- 8... Chamber Coffee: Great Bend Coffee Company, 2015 Lakin Ave. @ 9 a.m.
- 8... Kiwanis Pancake Feed, Barton County Fair Grounds, Expo I at 4:00 p.m.
- 10... Legislative Coffee, Great Bend Chamber of Commerce, 1125 Williams St. @ 10 a.m.
- 10... Eagle Home & Garden Show, Great Bend Events Center @ 9 a.m.
- 10... BCYP Casino Night, Barton County Fair Grounds Expo I @ 6 p.m.
- 12... Touched By Cancer Support Group, Heartland Cancer Center, 204 Cleveland @ 4 p.m.
- 12... Dilly & Doc Creative Studio Easter Class, 1119 Main St. @ 7 p.m.
- 15... Chamber Coffee: Holiday Inn Express & Suites, 3821 10th St. @ 9 a.m.
- 15... Presbyterian Church Irish Stew, 2400 Washington St. @ 4:30 p.m.
- 16... Insert Deadline for Farm & Ranch Exhibitor Packets, Chamber Office @ 5:00 p.m.
- 17... St. Patty's Day Golf Tournament, Stoneridge Country Club @ 10 a.m.
- 17... Studio Market Shopping Event, Dilly & Doc, 1119 Main St. @ 10 a.m.
- 20... Ribbon Cutting: Benefit Management, LLC, 2015 16th St. @ 10:30 a.m.
- 20... Central Kansas Partnership Meeting, 1300 Kansas Ave. @ 11 a.m.
- 21... Shoe Sensation Asics Trunk Show, 3407 10th St. @ 10 a.m.
- 22... Chamber Coffee & Ribbon Cutting: The Cutter's Edge, 3812 10th St. @ 9 a.m.
- 29... Quickbooks Basics Seminar, Spectrum CPA, 1400 Polk St. @ 9 a.m.
- 29... Chamber Coffee: Dilly & Doc Creative Studio, 1119 Main St. @ 9 a.m.
- 31... Kiwanis Easter Egg Hunt, Veterans Memorial Park – North Side @ 9 a.m.

Recurring Events:

Great Bend City Council Meetings, 1st & 3rd Mondays, 1209 Williams St. @ 7:30 p.m.
Barton County Commission Meetings, Every Monday, Courthouse Rm. 106, 9:00 a.m.

Annual Job Fest Returns in March - Register Now

The 11th Annual Job Fest is slated to take place on April 19, 2018 from 3:00 – 6:00p.m., at the Great Bend Events Center, 3111 10th Street, Great Bend, Kansas. With multiple partnership opportunities available, employers are encouraged to register online to reserve their booth space where they will have the chance to meet with many area job seekers. Returning this year will be The Career Closet, full of gently used business attire for those who are not in a position to purchase new clothes suitable for a job interview. Donations of lightly worn business attire are being accepted for the Career Closet, with drop off locations at KANSASWORKS and CKEOC, located at 1025 Main St., Great Bend. Interested employers can now register online at <http://tinyurl.com/zyfosb6> or by clicking the Sign Up button on their Facebook page at www.facebook.com/GBJobFest. For more information the 2018 Job Fest, visit www.facebook.com/GBJobFest. Send inquiries to Judy Jacobs at jacobsju@bartonccc.edu, (620) 792-9349 or Heidi Brittain at heidi.hrittain@ks.gov, 620.793.5445.



Yoga Central Offers 5- Week Beginner Yoga Course

Yoga Central is offering a new, 5-week beginner yoga course on Sunday evenings from 5-6 p.m. starting April 8th. In each 1-hour class, participants will learn about what Yoga is and the scientific benefits of it. Instructors will also teach class members different sequences and postures, while learning how individual bodies move to prevent injuries. This fun and informative class will fill up fast, with a maximum of 15 participants. Cost is \$75, and registration is open now through April 2nd on their website: www.yogacentralofgreatbend.com. Learn more on the Yoga Central Facebook page, or call 620-617-4142.

Final Legislative Coffee of the Year March 10th

The Great Bend Chamber of Commerce & Economic Development recently announced that it will host its final Legislative Coffee event on Saturday, March 10th to give local constituents the chance to network directly with their elected state officials.

The Coffee will start at 10:00 a.m. in the Spray-Holt Family Board Room at the Chamber office, 1125 Williams in downtown Great Bend.

"We invite all of our Kansas representatives and senators who represent Barton County to the coffees," says Jan Peters, President/CEO of the Chamber. "After a brief update from each legislator who attends, the audience can ask questions about the topics facing our state government." These events are open to the public. The 2018 Legislative Coffees are sponsored by Hutchinson Regional Medical Center.

OPI Launches New Website with Online Ordering

In the past, Office Products Inc. (OPI) maintained two separate websites – one that outlined its services and another that offered online ordering. Now, OPI has taken its online service to the next level with just one website that is easy to navigate for information and online orders. And all three stores now use the same website, www.opikan.com. In many instances, an ordered item can be delivered to the customer within a day.

OPI is located at 1204 Main in Great Bend; 516 Broadway in Larned; and 724 N. Main in Russell. Learn more by visiting the new website, or by calling 620-793-8479.



Putting People Above Profits

Several years ago, Leilani Schenkel had a gem of an idea floating around in her mind. She wanted to do something that truly mattered and would make a real difference in people's lives. It took a little while for the idea to crystalize but when it did, Schenkel learned all she could about a type of senior residential care that would be new to Great Bend.

The result was the opening of Almost Home Inc., 1919 Van Buren, four years ago this month on March 17, 2014. Schenkel is executive director of the non-profit entity; her husband, Scott, has been at her side for the entire journey. "Scott has always shared the vision and the commitment," she said. "And I cannot count the number of man hours he has devoted to anything we need, including maintenance and construction. I simply couldn't have done this without him."

The residence was completely remodeled before opening its doors. Capacity is 10 people, including two residents who need end-of-life care. One service is full-time residential care. However, if someone needs short-term care while recovering from a surgery or illness, Almost Home can oblige. Another service is respite care for up to 30 days. "For example, if a family is planning a vacation, their loved one can stay with us while they are away," Schenkel explained.

Adult daycare also is provided. This is designed for someone who needs a place to stay for less than 24 hours, while family members run errands or enjoy some leisure time. While the mission of Almost Home will never change, there have been a number of physical improvements since opening day. "From day one, we have been passionate about providing a high quality of care in a home-like environment," Schenkel said. "And our staff-to-resident ratio exceeds industry standards."

The staff of 28 includes seven registered nurses, including Schenkel, along with certified nurse's aides and certified medication aides. Ten employees are full-time and 18 are part-time. "Our staff is the reason we have been successful," Schenkel emphasized. "They are compassionate and professional, and take pride in what they do. They provide a lot of one-on-one, tender-loving care. They are committed to our residents and their families. Our seven-member board of directors also should be commended. They have been supportive since the very beginning."

Staff members combine efforts to provide medical care, three home-cooked meals a day, snacks and activities. "Breakfast is made to order because people wake up at different times," Schenkel noted. "Lunch and dinner are served family style."



Almost Home Inc. is located at 1919 Van Buren in the heart of a warm and inviting residential neighborhood in Great Bend. Residents feel like they are "almost home" because of the cozy home-like atmosphere.

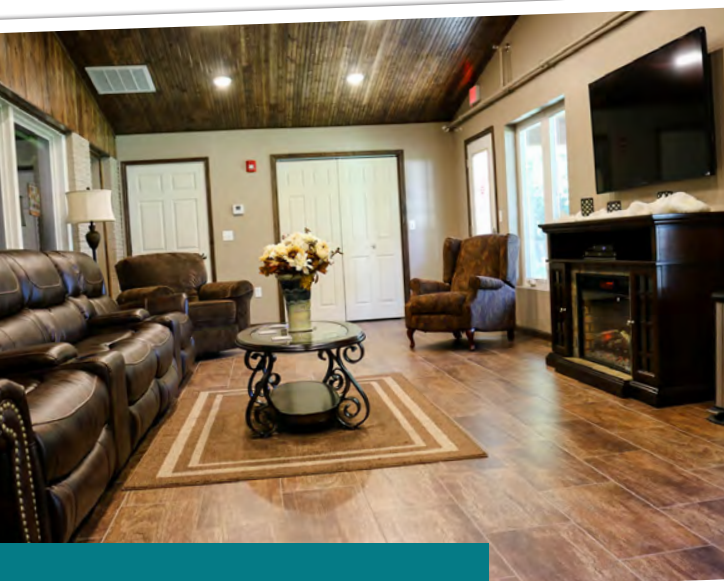
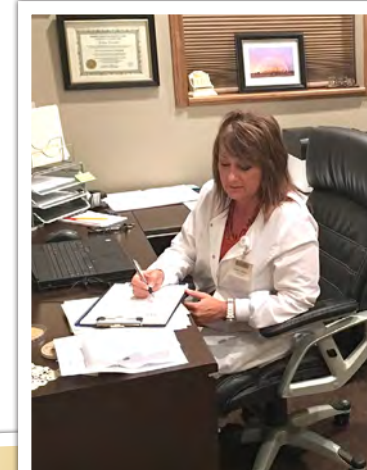
Improvements to the facility during the last four years include an on-site hospice retreat; Almost Home collaborates with a local licensed hospice-care provider. "We can have two residents at one time who need end-of-life care," Schenkel said. "This new facility gives the family a chance to step away to a private setting, eat a meal and take a shower. They have the opportunity to be a caring family member, not the primary caregiver. We just wanted to offer a welcoming retreat where families could have some private time."

The rest of the building is used for office and storage space. Most recently, Almost Home added a 14-by-36-foot room at the back of the residence. It is used for family meals, visiting, church services and other activities. It is equipped with a flat-screen TV. "This great open space with a vaulted ceiling was made possible by the 100 Who Care project," Schenkel said. "We were so gratified to be the first recipient of the group's generosity. The \$10,000 we received was seed money for this solarium project that lets the light shine in."

Other enhancements include a covered patio, landscaping, a Facebook page and website address, which is www.almosthomeinc.org. "We also are excited about an increase in the number of volunteers," Schenkel commented. "Our weeks are packed with activities and we do exercises every day. Those interested in volunteering their time and talents are encouraged to give us a call."

Some area doctors visit their patients at Almost Home once a month. Anyone with questions is encouraged to call 620-617-1634 anytime.

Schenkel's professional and educational background guided her to the doors of Almost Home. She has a bachelor's degree in nursing and is a paramedic. She spent 17 years as an emergency room nurse at Central Kansas Medical Center, which is now St. Rose Health Center. In addition, Schenkel was a flight nurse and marketing director with EagleMed, and director of nursing at Clara Barton Hospital. She also was chief nursing officer and chief operating officer at CKMC. "The community's spirit and our exceptional staff combined to allow us to offer this type of care in Great Bend," Schenkel said. "Because of our non-profit status, it will be sustainable far into the future. Yes, this was my vision but the community has brought it into focus."



ALLERGY MONTH

15% OFF

ALLERGY SCREENING TESTS AND
MEDICATIONS INCLUDING APOQUEL

620-792-1265



Phone: **620-792-5700**
1905 19th Street in Great Bend, Kansas

Family Practice & Mental Health Services

Preventative Care

Prescription Assistance

Diabetes Management

Evening Appointments

Open to Everyone

Bilingual Staff

All Insurance Accepted

Including Medicare, Medicaid & KanCare

"We Care About Your Health"

www.HeartofKansas.com

Pilot Club Hosts Autism Spectrum Conference

The Pilot Club of Great Bend is sponsoring an Autism Spectrum Disorder (ASD) Workshop set for Saturday, April 7, from 8 a.m. to 4 p.m. at Barton Community College in the Fine Arts building in Great Bend. The event is open to the public. Teachers and families in Kansas, and especially western Kansas, affected by autism are encouraged to attend. Attendees can sign up for this workshop early through the Pilot Club's web site, www.greatbendpilotclub.com, or print the registration form and mail to Great Bend Pilot Club, PO Box 503, Great Bend, KS 67530. Our Facebook page will also have a link for registration. The costs to attend are \$50 for professionals and \$20 for families, students and daycare providers. CEU's are pending. After the deadline of March 15, registration and admission at the door the day of the workshop will have an added fee of \$5.00.



Keynote speaker will be Dr. Jim Ball of Cranbury, New Jersey, author of the book, "Early Intervention and Autism, Real-Life Questions, Real-Life Answers." Dr. Ball is the immediate past chair of the National Board of Directors of the Autism Society. He has lectured nationally and internationally, provided expert testimony, and published in the areas of early intervention, behavior, consultation services, social skills, technology and trauma.

Additional speakers leading breakout sessions include the following:

- Dr. Linda Heitzman-Powell, PHD, MPH, of McLouth, is a licensed psychologist and a board certified behavior analyst.
- Elizabeth Hewatt is a board certified behavior analyst at Pathways Alternative Center for Education in Pratt.
- Tami Allen is the program director of Families Together, Inc. of Wichita with offices in Garden City.
- Jenni Halstead is a Certified Rhythmic Movement Consultant and Course Instructor who has worked in Occupational Therapy for 21 years.
- Keynote speaker, Dr. Ball, will join them in the breakout sessions sharing information on Strategies for Early Intervention Programs; Video Modeling and its Use in the Classroom; Social Skills Throughout the Educational Years; and Job Skill Resources. The workshop also will have a panel of parents who will share Their Stories and knowledge of this disorder.

The Great Bend Pilot Club has received a matching grant from the Pilot International Founder's Fund to help develop and present this workshop. The Pilot International Founders Fund was established to support the community-based work of Pilot Clubs by helping to underwrite club efforts to serve in the areas of Preparing Youth for Service, Encouraging Brain Safety and Health, and Supporting Those Who Care for Others. Through the Pilot International Founders Fund, Pilot International and its local Pilot Clubs are able to improve the lives of others through education, volunteerism, financial support and research. For more information about the Autism Spectrum Disorder Workshop, contact Sally O'Connor, 620-786-5572.

TLC Pet Salon Celebrating Third Anniversary

TLC Pet Salon will be celebrating 3 years, March 1st, in our current location at 2232 10th St. Jessica Bronge, groomer and myself, Lori Felsburg, owner, want to welcome everyone to stop in and say hi to help us celebrate! We have been so blessed with many wonderful clients over this 3 years and will be celebrating with several different events over the month; including a drawings for a dog and cat gift basket, 10 runner-up prizes, and a 50% off all Nail Trims on March 3rd. We will be announcing all our special event dates on our Facebook page, @TLCPetSalon, so be sure to keep checking it. Looking for more chances to celebrate? Print off the Explore Great Bend Coupon Page on their Facebook page and look for our logo! TLC Pet Salon offers Grooming for both dogs and cats, In-Home Care (Pet Sitting), Boarding, Dog Daycare, Puppy Training, and Pet Taxi Service. "Quality Spa Time For Your Pet!"

Boultinghouse Wins State Photography Award

Shane Boultinghouse, of Portraits by Shane in Great Bend, KS, received the Kansas Professional Photographers Association Honorary Life Membership award at the 2018 KPPA Conference in February. This surprise honor was presented in the company of many professional colleagues, friends and members of Shane's family.

Incorporated in 1950, KPPA was formed by a group of photographers wanting to promote Fellowship and Education among professional photographers in Kansas and within the Regional Area. KPPA Membership has grown to include over 250 members and includes some of the finest and national award winning portrait artists.

Members who make their living photographing Children, Families, Seniors, Weddings, Events, Commercial etc. KPPA is also affiliated with the Professional Photographers of America, Inc. (PPA) the largest association of professional photographers.



Reif Wins Oscar Schaffer Broadcasting Award

The Kansas State High School Activities Association (KSHSAA) is pleased to announce the selection of Cole Reif and Chris Duderstadt as the 2018 Oscar Stauffer Award recipients. Reif, Great Bend, has been dubbed the Sportscaster of the Year and Duderstadt, Lawrence, as the Sportswriter of the Year. Presented annually by the KSHSAA, the Oscar Stauffer Awards recognize excellence in the fields of sportscasting and sports writing. A special committee representing the Kansas Association of Broadcasters selects the honoree for the Sportscast of the Year.



Sportscaster of the Year award winner, Reif, is the sports director of KHOK-FM, Eagle Communications in Great Bend. Raised in the community, Cole Reif graduated from Great Bend High School and completed his Bachelor's degree at Fort Hays State University. While at Fort Hays, Reif announced football and basketball games for the university's television station and assisted Eagle Radio in broadcasting Hays High School and Thomas More Prep-Marian football games. Reif worked full time in Hays, Kansas and Raleigh, North Carolina before moving back to Kansas to take the Sports Director position in Great Bend. Reif is married and he and his wife Regan have a son, Fitz, born last November.

20/20 Optix Promotes Overton to Office Manager

Dr. Mark A Judd and 20/20 Optix are proud to announce that Joleen Jordan-Overton has been promoted to Office Manager. Joleen is originally from Claflin, Kansas. She moved with her family to the St. Louis area in her teen years and started working in the optical industry during her Senior year of High School. She currently has over 20 years of experience in the optical industry. Joleen has also worked in management assisting with budgeting, HR, staff training and other management duties. 20/20 Optix is located at 1701 K-96 Highway in Great Bend. Frame Gallery hours are Monday through Thursday from 8:30 a.m. to 6 p.m. and Friday 9 a.m. – 1 p.m. Learn more at www.drmarkjudd.com.



BCYP Casino Night Returns March 10th

Barton County Young Professionals members are invited to the 5th Annual Casino Night on Saturday, March 10th in the Expo I building, (2 miles West of Great Bend). Casino Night is proudly sponsored by Adams, Brown, Beran & Ball, the area's largest public accounting firm. Suggested attire for the evening is "snappy casual!"

6:00..... Social Hour & Cash Bar
7:00..... Dinner & Brief Program
8-10..... Casino Games & More!
10:00.... Prize Drawings

Following dinner, attendees will be invited to enjoy exciting casino games, social networking, and prize drawings at the end of the night. Only 200 tickets will be sold, so reserve yours early! Tickets are \$25 per person for general admission dinner tickets, or companies can reserve corporate sponsored tables with program recognition for \$300 (table of eight). Corporate tables will receive VIP treatment and extra perks! Purchase your tickets or reserve a table in the Facebook event on the Barton County Young Professionals page!

Barton's Technical Programs Benefit Area

Career and Technical Education (CTE) programs are a force of prosperity in local economies, and are now a respected mainstream alternative to the four-year-degree paths emphasized in recent decades.

According to an economic impact study on the 2015-16 academic year, every dollar of local taxpayer funding toward Barton Community College stimulates \$2.54 in spending in Barton County through Barton's operations, student spending and alumni who have entered the workforce after graduation. That amounts to an impact on the local economy to the tune of \$12.9 million.

Read the full story:
www.bartonccc.edu.

BASEBALL & SOFTBALL LEAGUES NOW FORMING!

Youth Leagues available for 3 year
olds thru 9th Grade.

Adult Softball Teams for Men,
Women, & Coed Leagues.

Enrollment Deadline begins March 23, 2018



Great Bend Recreation Commission
1214 Stone Street
620.793.3755
facebook.com/greatbendrec

- Indoor Pool & Hot Tub
- Fitness Center
- Business Center
- Free Wi-Fi
- Free Netflix
- Mini Fridge, Coffee Maker, Microwave & Iron in Each Room
- Two Restaurants & Bar On Site
- Indoor Courtyard, Perfect for hosting reunions, parties & vendor shows!



Best Western.

GREAT BEND, KANSAS
2920 10th Street • (620) 792-3541
Take a virtual tour at bwangus.com!

620-792-3541

Marmie Auto Group Announces Acquisition of Dove Chevrolet Buick Cadillac Dealership

Late last year, the owners of Marmie Ford and Marmie Motors in Great Bend, Kansas had the opportunity to expand their enterprise by purchasing the Doonan GMC Dealership. And now, two months later, the family owned business is excited to announce the acquisition of Dove Chevrolet Buick Cadillac as well.

"It has been a whirlwind of a year, but with two great opportunities to expand our business and keep these companies and dollars local, we just couldn't pass them up. When we were approached by Kenny and then by Rob about purchasing their dealerships, from a business perspective it just made sense," says Desa Marmie Behr, third generation in the automobile business. "Both of these companies had exceptional reputations for customer service and we didn't want to see the jobs and the management go to an out-of-town company that may not always keep this community's best interests at heart. We believe strongly in Great Bend, and are willing and proud to invest in its future. We are looking forward to welcoming all of their employees into our team, and will embrace their talents and experience."

The Marmie family's legacy in the auto industry started when Eustace Marmie first opened his car dealership in 1961. His sons, Jerry and David, have operated the business for several decades, and now Dave's daughter Desa Marmie Behr and her husband Shawn Behr along with CFO Jason Mayers are picking up the reigns and bringing new opportunities to their customers. "We will focus on giving the consumer a straight forward, low pressure, and very transparent buying experience. We hope to expand on the current inventory levels, and have a great selection of varying options and price ranges," says Shawn Behr, who will assume the General Manager responsibilities for the west location. "We will work hard to earn the business of past and future customers alike, and will continue to prioritize service - before, during, and after the sale."

Marmie Auto Group currently employs 100 people between full time and part time employees, and the addition of the Dove's and GMC employees will bring over 20 new members to that team. Employees of the newly acquired dealerships will enjoy better benefit programs and the security of working for a locally owned company that values their experience and their customer relationships. It is for this reason that Rob Dove was pleased to sell his family's three generation business to the Marmies. "I can remember a time in 1977 right after I started working for the dealership when my Dad, Dee Dove, came into my office and asked me what kind of business we were in. I said 'the car business' and he told me to go home and think about it," Rob recalls. "The next day, he asked me the same question, and then explained that we are in the PEOPLE business. The same way that I have been groomed and trained in this industry, so have Desa and Shawn. We have always gotten along with the Marmies, and I am confident that they will do a great job taking care of our customers."

Rob and his wife, Trisha, will be retiring at the end of March to spend more time with family and on hobbies they enjoy. Rob plans to spend time farming, fishing, woodworking, and making memories with their four grandchildren. "Success in this business, especially in a rural setting, is impossible without customer satisfaction," Dove says. "The Marmie team's success is obvious, and it's because they get it. I am thrilled that they are the ones buying our dealership."

Marmie Auto Group is based at the intersection of 10th Street and Kansas Avenue in Great Bend, with an impressive inventory of new, used, and program pre-owned certified Ford, Lincoln, Chrysler, Dodge, Ram, and Jeep vehicles to choose from. The new Marmie Chevrolet Buick GMC Cadillac dealership will be located at 4217 W. 10th Street. Learn more about the Marmie Auto Group on their website, www.marmies.net, or by calling 800-239-7840.



Ambassador Profile - Shannon Stafford

What brought you to Great Bend? What keeps you here?

I was born and raised here in Great Bend. I stay here to raise my 2 girls! I love the small hometown feel, and the community involvement.

Where do you work and what do you do there?

I am the manager of Bling Glamour, a women's clothing boutique on Lakin Ave. and perform all day to day tasks. My days consist of getting to help ladies find outfits that make them feel good!

What's one thing about you that would surprise people?

I'm pretty much an open book! I love being surprised.

What energizes you and brings you excitement?

People! I love the different energies!

At what job, would you be terrible?

Anything where I would be stuck behind a desk. I need to be around people.

How long have you been a Chamber Ambassador and what do you like most about it?

Since January 2016. I enjoy being a part of a lot that goes on in the community and the people.

About Chamber Ambassadors:

The Great Bend Chamber of Commerce & Economic Development Ambassador Club is made up of 30 men and women from the Great Bend business community who represent the Chamber in a number of ways. They host the weekly Chamber Coffees, attend Business After Hours and Ribbon Cuttings, serve on Chamber committees, and assist with member recruitment and retention efforts. They also volunteer at numerous Chamber events, such as the Farm & Ranch Expo, Golf Tournament and the Annual Banquet. To find out how you can become a member of the Ambassador Club, contact the Chamber: 620-792-2401.



Dairy Queen Hosts Ribbon Cutting for Remodel

Have you driven by our local Dairy Queen on South Main recently? Next time you do, take a good look at their long-awaited facelift! At a recent Chamber Coffee and Ribbon Cutting, we were reminded just how special this location is and of their interesting history! For example, did you know that our very own Dairy Queen is home to the creation of the now retired Brownie Earthquake? Or that this store has been in its original building since 1948? Last remodeled in 1986, the Great Bend store is only the second location in Kansas to receive the brand new store "look" and it's something we can all be proud of!

Store owner, Candi Lunsford invites area businesses to think of Dairy Queen for their next celebration, as they now have the ability to screen business logos and other personalization onto their popular ice cream cakes. Contact Dairy Queen at 620-793-8961.



GREAT BEND CHAMBER OF COMMERCE & ECONOMIC DEVELOPMENT

Welcome to Our NEW Chamber Members

GREAT BEND MASONIC LODGE NO. 15

Dick Dougherty, Master
1917 17th St.
Great Bend, KS 67530
(620) 793-2523

Organizations / Associations / Clubs

RODAN + FIELDS — JONI MUNCH

2700 28th St.
Great Bend, KS 67530
515-559-4238
jmmudge@yahoo.com
<https://jmudge.randf.com>

Skincare

THE CUTTER'S EDGE

Robbie Kigar, Owner
3812 10th St.
Great Bend, KS 67530
(620) 639-1461

thecuttersedge018@gmail.com
<https://jmudge.randf.com>
**Lawn/Garden Equipment – Small
Engine Service**

HOUSING OPPORTUNITIES, INC.

Vicky Dayton, Executive Director
1313 Stone St.
Great Bend, KS 67530
(620) 792-3299
info@housingopportunities.net
www.housingopportunities.net
Real Estate – Rental

H & H ROOFING

Ryan Gardner, Sales Manager
2817 9th St.
Great Bend, KS 67530
(620) 617-6013
www.handhroofingks.com
Construction

THE HR PRO

Erika Brining, Owner
2817 9th St.
Great Bend, KS 67530
(620) 793-0985
www.thehrpro.net
Business Consultants



**CELEBRATING OVER 52 YEARS
OF SERVING PEOPLE WITH
DEVELOPMENTAL DISABILITIES!**

There is a Difference.

EARLY EDUCATION
CASE MANAGEMENT • DISABILITY SUPPORTS
RESIDENTIAL ASSISTANCE
COMMUNITY EMPLOYMENT
RECYCLING & MANUFACTURING
GENERAL PUBLIC TRANSPORTATION
WESTSIDE MARKET
AND MUCH MORE!

620-792-1321

WWW.SUNFLOWERDIV.COM

Hutchinson Clinic Physicians Serving the Great Bend, Hoisington & Ellinwood Areas

GREAT BEND:

Hutchinson Clinic Great Bend / 3715 6th Street
Dr. Jamil Ahmed, Cardiologist
Tricia Gilligan, PA, Pulmonology
Natalie Williams, PA, Pulmonology
Dr. Curt Thompson, Interventional Radiologist

ELLINWOOD:

Ellinwood Medical Clinic / 611 N. Main
Dr. Lindsay Nordwald, OBGYN

HOISINGTON:

Clara Barton Medical Clinic / 250 W 9th St
Dr. Geoffrey Kraemer, Podiatrist
Dr. Costy Mattar, Cardiologist
Dr. Christine Sanders, OBGYN
Dr. Curt Thompson, Interventional Radiologist

Exceptional Care Close to Home



Call for an appointment: 620-669-2500
www.hutchclinic.com

CHAMBER COFFEE SCHEDULE **Every Thursday | Doors Open at 9am | Program at 9:30am**

March 1, 2018

MAGNA DRY

2646 Main Street in Great Bend

Come visit our new location! Magna-Dry is a unique carpet cleaning company in that we offer a true dry-cleaning process which utilizes a dry-cleaning fluid to clean carpets instead of water or soap. Magna-Dry's system includes a little static electricity, a little warmth, standalone equipment (no hoses being dragged through your house from a truck outside), and our professionally trained carpet cleaning technicians. The RESULT is cleaner, drier, residue-free carpet that you can walk on and use within one hour or so.

March 8, 2018

GREAT BEND COFFEE

2015 Lakin Avenue in Great Bend

We want to thank everyone for their support for the past 3 years. In February we started a full breakfast with eggs, pancakes, waffles and all the extras. Serving breakfast 7-10a.m., Mon-Fri and 8-10a.m. on Saturdays. We have 65 different sandwiches, salads, wraps, and pizzas with specials daily. We take reservations for Friday & Saturday evening dinners with a full menu including steaks, pasta, seafood, as well as other specials. AND we do Coffee! Come and see us at 2015 Lakin Ave. Find us on Facebook!

March 15, 2018

HOLIDAY INN EXPRESS & SUITES

3821 10th Street in Great Bend

Greetings from the Holiday Inn Express and Suites in Great Bend. Our 78 room hotel provides accommodations for all guests alike. Come in and take a look at our spacious meeting room and our board room. We also offer daily breakfast, swimming pool, hot tub, business center, on-site laundry and a 24-hour work-out facility. We strive to make each of our guest's experience a memorable one.

March 22, 2018

THE CUTTER'S EDGE

3812 10th Street in Great Bend

Come see us for repair to your Mowers/Weed Eaters/ Chainsaws/Pumps. We also mow yards. We buy used equipment and engines. In the old Bumper-to-Bumper Auto Parts building.

March 29, 2018

DILLY & DOC CREATIVE STUDIO

1119 Main Street in Great Bend

Dilly & Doc classes are for every skill level and step-by-step instruction is provided by owners Phyllis & Brad Brack. They strive to provide an environment where attendees can express their creativity, a chance to learn a new skill, or even just an evening of fun and laughs with friends. Open by appointment and during classes or open studio hours, you can visit Dilly & Doc Creative Studio at 1119 Main. Find us on Facebook.

April 5, 2018

NO COFFEE - ENJOY THE GREAT BEND FARM & RANCH EXPO

Celebrating its 7th Anniversary, the Great Bend Farm & Ranch Expo will take place April 4-6th at the Great Bend Expo Complex just two miles West of Great Bend. Featuring nearly 700 exhibitors with indoor and outdoor exhibits, and no admission fees - with something for everyone, bring the family and check it out!



3307 10th Street • Great Bend, KS 67530

McDonald's

is providing coffee for Chamber of Commerce coffees.