

OUTLOOK

GREAT BEND
CHAMBER OF COMMERCE

APRIL 2024
VOLUME 103 NO. 4

A MONTHLY PUBLICATION OF THE
GREAT BEND CHAMBER OF COMMERCE

business journal

1921



2021

Chamber Program Embraces Transformation: A Journey Towards Exciting Change



FUEL
FOCUS • UNITE • ENGAGE • LEAD
BARTON COUNTY

In 2011, the Great Bend Chamber of Commerce took the initiative to establish the Barton County Young Professionals (BCYP) program with a group of ambitious young leaders at the forefront, recognizing the importance of nurturing and supporting the young talent within our rural community. Over the years, BCYP has been instrumental in organizing a variety of engaging events, facilitating networking opportunities, spearheading successful fundraisers, and mobilizing volunteer efforts.

Fast forward to January 2024, and BCYP is undergoing an exciting transformation into FUEL Barton County. FUEL, which stands for Focus, Unite, Engage, Lead, is committed to bridging the gap between seasoned professionals and emerging talent, and being part of the conversation as it relates to not only attracting and retaining young talent but also fostering meaningful connections among current industry leaders.

We invite individuals and businesses alike to join us in these conversations, connect with FUEL, and play an active role in shaping the future of Barton County's professional landscape. With the launch of FUEL, we're poised to enhance membership benefits, deepen community engagement, and strengthen partnerships to better serve the needs of Barton County's rising talent.

2024 Steering Committee

Chair: Callie Miller, Housing Opportunities Inc.
Vice Chair: Kaitlin Sill, Adams Brown
Secretary: Katie Hales, Katie Made Krafts
Treasurer: Christy Conner, First Kansas Bank
Jessy Kirmer, MPIRE Realty Group
Kelsey Hall, Barton County Upward Bound
Christian Rivas, Barton Community College
Flor Sanchez, Heart of Kansas Family Healthcare
Kyler Sill, Adams Brown
Ethan Smith, TruStage
Zach Streit, Landmark National Bank

Outlook Business Journal

A monthly publication of the

GREAT BEND
CHAMBER OF COMMERCE1125 Williams,
Great Bend, KS 67530
Phone: 620-792-2401
Fax: 620-792-2404

www.greatbend.org

EXECUTIVE COMMITTEE

Chair

Robert E. Bauer, Bauer Pike Law

Vice Chair

Scott Dewerff, KanEquip

2nd Vice Chair

Jessica Milsap, MPIRE Realty Group

Immediate Past Chair

Shelly Peacock, Insurance Planning

Treasurer

Barry Bowers, Spectrum CPA Partners**BOARD OF DIRECTORS****Joe Andrasek**

Damm Pipe Testing

Wally Eldridge

Eldridge Fencing

Jeremy Elliot

myLawn! Turf & Tree

Chuck Felthoelter

People's Bank and Trust

Mike Johnson

M and M Equipment Company

Matt Kurtz

Identifications

Sarah Panning

Nex-Tech Wireless

Shawn Powelson

Equity Bank

Mike Ruddle

Doonan Specialized Trailer

Flor Sanchez

Heart of Kansas Family Healthcare

Nikki Seybert

Venture Corporation

Cammie Vaupel

American Plains Co-op

Jim Vopat

Edward Jones

Kenda Werth

University of Kansas Health System

EX-OFFICIO

Sara Arnberger, Great Bend Economic Development

Tory Marie Blew, Designated Legislator

Lindsey Bogner, Ambassador Club

Christina Hayes, Convention & Visitors Bureau

Dr. Carl Heilman, Barton Community College

Shawn Hutchinson, Barton County Commission

Kaitlin Sill, Barton County Young Professionals

Khris Thexton, USD 428

CHAMBER STAFF

Megan Barfield, President/CEO

Ashley Hickman, Office Manager

Jaimee Beckwith, Member Engagement Specialist

Julie Mazouch, Office Assistant

Featured Ambassador: Amy Herrera

Ambassador Club members assist the Chamber with networking events, ribbon cuttings, groundbreaking, and membership recruitment and retention. This group of volunteers allows the Chamber to cultivate business relationships and network with the area's most successful people. If you would like to become an Ambassador and represent your company, contact a member of the Chamber staff.

Q What Brings You Here?

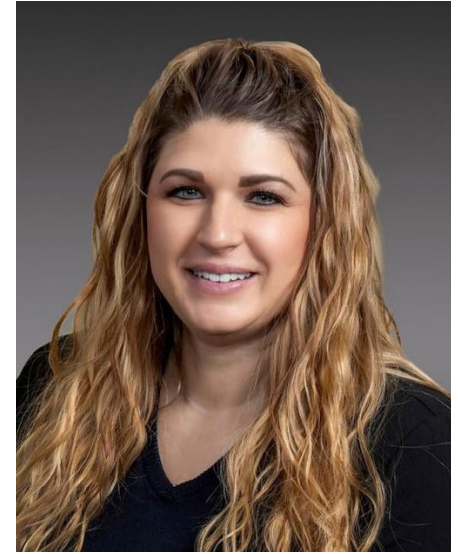
A I was born and raised in Great Bend and graduated from high school here. After high school, I attended the University of Kansas for a few years before moving to Orlando to pursue an internship at SeaWorld. After that, I got married and had the pleasure of living in Stafford, Virginia and Jacksonville, North Carolina as my husband was in the Marine Corps. We eventually moved back home to be closer to our families.

Q Your Day to Day Jobs

A I work at Equity Bank as the Regional Retail Sales Manager. I get the pleasure of building a team of individuals who want to help our customers achieve their financial goals. I spend lots of time coaching my staff to become better versions of themselves, leading my team to sales goals, and building relationships with customers! I am blessed to have so many great team members who are driven, motivated, and hard-working.

Q Surprise Us!

A I'm not sure this would surprise the people who know me well, but I love to dress up! Halloween and Christmas are my holidays. No one can beat me at an ugly Christmas sweater contest. I don't just wear the sweater, I have leggings, shoes, a skirt,



jewelry, all the things. And Halloween is no different. You can normally find me posing as one of the many Disney Princesses.

Q Your Inspiration

A Apart from my husband and our children, who inspire me to work hard and pursue my dreams, my inspiration comes from my relationship with Jesus. His entire life was devoted to loving people well and showing grace when they didn't deserve it. I strive every day to love people well and extend grace often.

Q Wild Card

A I would be a terrible chef! I have zero skills when it comes to anything in the kitchen. If I can't follow a recipe, or the recipe is complicated, I'll move on to something else.

Q Your Role as an Ambassador

A This is my second year as a Chamber Ambassador. We have such a fun group of individuals who love this community and have a passion for making it better. The thing I love most about being an ambassador is the relationships I have built with other business leaders in our community. I've learned how to be a better leader and I'm so grateful for this group of people.



Pints & Politics

Join us for a fun and casual “happy hour” with candid conversations during Pints & Politics, hosted by the Great Bend Chamber of Commerce alongside FUEL Barton County! This exclusive members-only affair is not your run-of-the-mill political gathering – it’s a dynamic opportunity to mingle, connect, and exchange insights with your fellow business leaders and the elected officials representing Great Bend, Barton County, Kansas, and the US. This is your chance to engage directly with decision-makers and influencers from various levels of government.



Special Guest Alert!

We’re thrilled to welcome Eric Stafford, Vice President of Government Affairs with the Kansas Chamber of Commerce, to share stories and behind-the-scenes anecdotes from his time in Topeka. Get ready for an insider’s perspective on the workings of the Kansas Chamber, Kansas Statehouse, and more.

Eric Stafford joined the Kansas Chamber as the Senior Director of Government Affairs in January of 2011, before being promoted to our Vice President of Government Affairs in May 2014.

As the Vice President of Government Affairs, Eric serves as part of the government affairs team responsible for the Chamber’s policy and advocacy efforts on pro-business legislation. Eric’s primary focus has included

worker’s compensation, unemployment insurance, immigration, health care and tort reform. In his new role, Eric is responsible for the Chamber’s advocacy on tax policy, government efficiency, state budget and legal reform.

Prior to joining the Kansas Chamber, Eric served as the Director of Government Affairs for the Associated General Contractors of Kansas for six years. With AGC, Eric represented and lobbied on behalf of the commercial building construction industry. He also oversaw AGC’s communications and public relations efforts.

Eric graduated from Kansas State University in 2002. He and his wife Shahira live in Topeka and have two children.

Elected officials invited encompass a diverse array of representatives from key offices, including:

- Great Bend City Council
- Barton County Commissioners
- USD 428 Board of Education
- BCC Board of Trustees
- Kansas State Legislators
- Staff members of our Federal delegation

It’s an unparalleled opportunity to network and forge valuable connections that could shape the future of your business.

WHAT TO EXPECT

Happy hour kicks off at 4:30 p.m. with light appetizers and a cash bar. Enjoy the conversations!

5:15PM - Brief introductions of delegates so you can put a face to a name

5:30PM - 5:45PM: Behind the Scenes with Eric Stafford, VP of Government Affairs, Kansas Chamber of Commerce

6:15PM - Door Prizes

6:30PM - Event Concludes

Attendance is free for Chamber members, but please RSVP to secure your spot.

Have questions or need more information? Contact the Great Bend Chamber of Commerce at 620-792-2401.

WELCOME NEW MEMBERS!



JAN WESTFALL
Great Bend, KS
Retired



Hoisington Veterinary Hospital
Your Other Family Doctor

Lindsay Reif, DVM
(620) 653-2862
3 NW 90 Rd | Hoisington, KS
hoisingtonvet.net
Veterinarian



Tyler Howard, Owner
(620) 392-3226
3810 Railroad Ave. Lot B
Great Bend, KS

Landscape Design / Nurseries



5319 10th Street
Great Bend, KS 67530
www.gbautosales.com
620-797-7440
mangbautosales@outlook.com

Javier Alvarez, Owner



WHERE: DRY LAKE
BREWING

WHEN: TUESDAY, APRIL 16
4:30 PM - 6:30 PM

**MEMBERS ONLY
FREE TO ATTEND**

SPONSORED BY
Kansas
Gas Service.

GREAT BEND
CHAMBER OF COMMERCE

FUEL
BARTON COUNTY

WELCOME NEW MEMBERS!



HAPPY GIRL FLOWER SHOP
CC Radenberg, Owner
(620) 617-9174
109 A St. | Claflin, KS
happygirlflowershop.com
Florist



DR. SHERRI BRANTLEY
(620) 617-1777
Great bend, KS
Education

**MALENA'S
HOUSEKEEPING
LLC**
PROFESSIONAL CLEANING SERVICES
*Commercial
*Offices
*Residential
*Construction
GOOD REFERENCES AVAILABLE
620-282-1670
Malena Carbajal
malenacarbajal18@yahoo.com
WE SPEAK ENGLISH AND SPANISH

PARR SOUND & LIGHTING
Gary Parr, Owner
(620) 792-2111
PO Box 1957 | Great Bend, KS
**Sound Systems
Production & Equipment**

RUGAN 3 FARMS, INC.
Richard Rugan, Owner
(620) 786-0934
Claflin, KS
Agriculture

Golden Belt Community Concerts All Set for Membership Campaign

The Golden Belt Community Concert Association will launch its 2024-2025 season Membership Campaign April 5. Traditionally, the association does not announce the concerts until the campaign is under way, but it can provide some hints as to the genres; in this case, jazz, swing, rock and roll, blues, classic big band and country pretty well describe the new season without naming names.

The campaign will run from April 5 through April 26. Changes in how memberships are accepted for the new season, give a new importance to the April 26 deadline for both renewals and new memberships.

To help make the campaign run smoothly, the association needs to receive as many renewals as possible during the first two weeks. The third week of the campaign will be devoted to accepting new members, but renewals will still be accepted as well until April 26.

With efforts being made to create a more efficient membership campaign serving the members, patrons and volunteers, membership fees for those who renew or join by April 26 are still as follows: Adults, \$50; full-time students, \$10; Family package (two adults and all dependent children living in same household), \$110; and Grandparent package (two adults and four minor grandchildren), \$110.

However, after May 1, membership fees will increase by \$20 per adult. Fees after that date will be: Adults, \$70; Full-time enrolled students, still \$10; Family package, \$150; and Grandparent package, \$150. The association will continue to accept memberships until sold out. A membership table will not be set up at the concerts. Anyone wishing to purchase a membership after May 1 may do so by mail to Golden Belt Community Concert Association, P.O. Box 1795, Great Bend, KS 67530; online by PayPal or credit card, www.goldenbeltcca.org, or by phone, 620-793-2748 (until sold out).

Volunteers will be contacting present members beginning April 5. Renewal is guaranteed only if payment is received or postmarked by April 26. In the event of a sell-out, memberships will be tabulated as they are received at the association headquarters, April 25 and 26, at a new headquarters location this year – the



education wing at Trinity Lutheran Church, 2701 24th Street, using the south entrance. Renewals and new memberships will be accepted at headquarters from noon to 7 p.m. Thursday, April 25, or from 10 a.m. to 5 p.m. Friday, April 26.

Again, your GBCCA membership will include at no extra cost our Travel Benefit through Cheyenne Travel Agency/Please Go Away Vacations. You may check out travel options by contacting the travel agency, and from time to time we will display information about travel opportunities, including three GBCCA “featured” travel destinations.

With the GBCCA membership comes at no extra cost a Travel Benefit through Cheyenne Travel Agency/Please Go Away Vacations with special savings for GBCCA members and all members of their travel party.

Continuing this current season, the association has two more concerts remaining. ABBAFAB, an ABBA tribute, on Monday, April 8, and “7,000 Miles to Broadway” with J. Robert Spencer on Friday, May 3.

Having played to sold-out crowds across the U.S. and abroad, ABBAFAB is a stunning tribute to the music of ABBA, whose record-breaking number of hits – “Dancing Queen,” “Mamma Mia,” “Honey, Honey,” and so many more – have stood the test of time and continue to thrill audiences of all ages.

J. Robert Spencer’s talent across genres and decades brought him to Broadway and paved his way to starring in “Jersey Boys” and “Next to Normal.” Growing up singing classic country, rock and roll and Broadway hits along with the car radio and eight-track tapes propelled him the 7,000 miles it took for him to make it on Broadway. His concert will include the music from his many genres and decades.

United Way of Central Kansas Renews Impact Grants Program to Support Local Non-Profits

The United Way of Central Kansas (UWCK) is proud to announce the renewal of its Impact Grants Program, offering funding opportunities for non-profit organizations in Barton & Pawnee Counties.

The application process is streamlined, requiring only a simple one-page application and relevant documents.

Eligible applicants must be either governmental agency programs or 501(c)(3) non-profit organizations doing work in the fields of Health, Education, or Financial Stability; no grants will be awarded to individuals. Requests should align with the specified focus areas, demonstrate a need for funding, and be used for a specific program or project with a maximum request limit of \$1,000 per application. The total allocation for the year will not exceed \$5,000.

“We are committed to supporting initiatives that address pressing community needs,” said Charell Owings, Executive Director at UWCK. “Our Impact Grant Program provides a valuable opportunity for non-profits to access funding for innovative projects that advance the well-being of our area.”

Applications for Impact Grants will be accepted year-round, with review periods in May and November. Funding decisions will be based on a scoring system reflecting UWCK’s funding priorities, ensuring that resources are allocated to projects with the greatest potential for positive impact.

In 2023, funds were awarded to Barton County Core Community, ElderCare for Meals on Wheels costs, USD 495 ECHO Project, USD 428 Little Panthers Preschool, Boy Scouts of America, Dropping 22, Inc, and Catholic Charities of Southwest Kansas Disaster Relief Fund.

“We are excited to collaborate with local non-profits to drive positive change in our community,” added Owings. “Through the Impact Grant Program, we aim to foster innovation, collaboration, and long-term sustainability for initiatives that benefit Barton and Pawnee Counties.”

For more information about the Impact Grant Program or to access the application, please visit www.uwck.org/impact-grant-application or contact UWCK at 620-792-2403.

WELCOME

Benn Maddox

Consumer & Small Business Lender



Contact Benn:

Consumer Loans:

- Home Equity Line of Credit
- Vehicle
- Personal

Small Business Loans:

- Equipment
- Line of Credit
- Real Estate

VISIT US:

725 McKinley Street
Great Bend, KS 67530
(620) 791.5202



EQUITY BANK

equitybank.com

MEMBER FDIC  Equal Housing Lender
NMLS #438624

2024

UWCK IMPACT GRANTS

Up to
\$1,000

The United Way of Central Kansas Impact Grant program will make awards of up to \$1,000 per year to a non-profit organization project/program benefitting Barton or Pawnee Counties. The total awarded throughout the year (April 1-March 31) will not exceed \$5,000.

Grant
Cycle
2x/year

Impact Grants will be accepted any time during the year. Applications will be reviewed in May and November. Funding will be awarded based on a scoring system reflecting UWCK funding priorities.

Make
An
Impact

Project/Program must be related to the fields of Health, Education, or Financial Stability. Must be a 501(c)3 non-profit organization. Priority funding will be given to projects that present innovative approaches to meeting the health and human services needs of our community.

**MORE
INFORMATION**

620-792-2403
[www.uwck.org/
impact-grant-application](http://www.uwck.org/impact-grant-application)



New Hire?
New Service?
*Submit the
NEW Here!*

SCAN ME



No formal press release? No
communications department? No
problem! Simply scan and let us
know what's going on in your
business, and we'll do the rest!

Ribbon Cutting! Club 1 Fitness

Club 1 Fitness, the premier fitness facility in central Kansas, is proud to announce its 50th anniversary celebration with a ribbon-cutting event hosted by the Great Bend Chamber of Commerce. The event took place at the Club 1 Fitness location at 3806 Broadway Avenue, Great Bend, KS 67530 on March 6, 2024. This milestone marks five decades of dedication to health and wellness in the community.

Since its inception on March 10, 1974, as Town & Country Racquet Club owned by Martin Casey, Club 1 Fitness has been committed to providing top-notch fitness amenities and services to its members. With a vast 64,000 square foot facility, Club 1 Fitness offers a comprehensive range of fitness equipment and high-end amenities, including a weight room, cardio equipment, dry sauna, steam room, hot tub, Olympic-size swimming pool, full-size locker rooms, and over 30 group fitness classes.



Club 1 Fitness prides itself on being the go-to fitness destination in the area, offering more equipment, fitness classes, and expertise than any other facility. Conveniently located in Great Bend, Kansas, the facility continues to uphold its commitment to providing exceptional services to its members, including the Kid Zone and Youth Programs.

To celebrate its 50th anniversary, Club

1 Fitness invited the community to join in the festivities. Guests were handed a commemorative t-shirt the day of the ribbon cutting ceremony. Over 50 people gathered to celebrate the fitness centers past, present and future.

For more information about Club 1 Fitness, please visit www.club1fitness.net or at (620) 792-1366.

Ribbon Cutting! Eldridge Fencing

Eldridge Fencing, a family-owned business that began its journey in a modest garage in 1994, proudly commemorates its 30th anniversary. To mark this significant milestone, the Great Bend Chamber of Commerce hosted a Chamber Coffee event, including a Ribbon Cutting ceremony, Thursday, March 14th, 2024, at Eldridge Fencing's location at 80 10th Street in Great Bend, KS. The event celebrated the company's achievements and its profound contributions to the community over the past three decades.

Over the years, they have grown from a small-scale operation into a widely recognized enterprise, esteemed for its exceptional service, impeccable craftsmanship, and steadfast commitment to quality products. In 2006, the establishment of Western Kansas Fence Supply (WK Fence Supply) further solidified Eldridge Fencing's position as a leader in the fencing industry, catering to over 70 fencing companies across three states. Additionally, they offer top-tier



decking products, enhancing the long-term value of properties.

Beyond fencing products, Eldridge Fencing boasts an impressive Outdoor Cooking showroom featuring premium grill lines, including Traeger Wood Pellet Grills. Eldridge Fencing invites you to visit their showroom and experience firsthand the unparalleled products and services that have defined the company for 30 years.

For more information about Eldridge Fencing, please visit www.eldridgefencing.com or contact them at 620-793-7970.

Ribbon Cutting! Magna-Dry



The Great Bend Chamber of Commerce recently hosted a Chamber Coffee and Ribbon Cutting ceremony to commemorate Magna Dry's newly renovated building located at 2606 Main St, Great Bend, KS.

Thanks to a Barton County Facade grant, Magna Dry was able to enhance their curb appeal by updating signage, awnings, and refreshing their exterior paint.

Magna-Dry, a family-owned and operated business since 1988 led by Todd and LaDesha Clark. Specializing in professional cleaning services, Magna Dry offers top-quality carpet cleaning, air duct cleaning, auto detailing, mold remediation, asbestos testing, insulation removal from attics, tile and grout cleaning, 24/7 water and fire restoration, and now, new disinfection services as well as professional-grade cleaning products.

For more information about Magna Dry, please visit www.magnadrygb.com or contact them at 620-282-2267.

Ribbon Cutting! Michele Gregg ICT Insurance



Great Bend Chamber of Commerce hosted a Ribbon Cutting Ceremony on March 21, 2024, to commemorate ICT Insurance Group

- Michele Gregg's new location at 1722 Main St. The event allowed community members to learn more about Michele Gregg, a

seasoned insurance professional and ICT Insurance Group's comprehensive approach to insurance.

Having transitioned from the medical field to pursue a career in insurance, Michele's journey was sparked by her experiences with benefits submissions and a desire to explore new avenues. Since beginning her insurance career in 2020, Michele has demonstrated remarkable dedication and expertise, quickly establishing herself as a leader in the field.

For more information about ICT Insurance Group and their services, visit:

www.ictinsurancegroup.com
or call at (620) 531-0139.

Ribbon Cutting! Kelly's Garden Sense



Kelly's Garden Sense, announced the expansion of its Milt Greenhouse with a ribbon-cutting ceremony that took place on Thursday, March 21, hosted by the Great Bend Chamber of Commerce.

The new greenhouse and event space promises an even wider selection of plants, products, extended shopping hours and workshops. For more information visit www.kellysgardensense.com or (620) 282-7170.

Thompson Recognized as Top Financial Advisor

RICHARD THOMPSON, a financial advisor at WADDELL & REED in GREAT BEND today announced that his achievements have been recognized with inclusion in LPL Financial's Masters Club* for 2024. This distinction celebrates a select group of advisors on ambitious growth trajectories, who have achieved excellence in financial guidance. As America's investing public looks ahead to continued macroeconomic uncertainty and market volatility, it is critical they have an experienced financial partner by their side to help them manage, preserve, and deploy their wealth.

RICHARD THOMPSON serves clients based in Kansas and 11 other states providing comprehensive wealth management services, including: retirement and financial planning, individual money management, individual stocks and bonds, mutual funds, annuities and more.

"On behalf of the entire team at LPL, I am thrilled to congratulate RICHARD on his outstanding achievements in 2023," said Julian Lopez, LPL's Executive Vice President of Independent Advisor Services Relationship Management. "By utilizing our proprietary technology and suite of customized services, RICHARD has taken his business to the next



level, allowing him to dedicate more time to building meaningful client relationships with families in Kansas and 11 other states. Through his guidance, he has been instrumental in helping these families turn their aspirations into financial realities."

RICHARD THOMPSON has been affiliated with LPL Financial, a leading wealth management firm, for three (3) years. Through LPL, financial advisors are empowered to focus on their unique skills in building client relationships and delivering personalized financial advice, while leaning on LPL to provide the services, support and tools to help increase operational efficiency and power business growth.

Cutting Edge Neurolens Technology

The 10th Street Eyecare Center located at 2601 10th Street in Great Bend, Kansas recently implemented a new cutting-edge testing technology called N3 to help patients identify whether they need corrective lenses for extended use of digital screens. N3 is a unique testing experience, where the patient wears a virtual reality-style headset to complete a series of tests while the headset tracks eye movement and the eye's ability to focus at different distances.

"The demand on our eyes is greater than ever with people using screens more and more at work and in their free time," says Dr. Chad Premer with The 10th Street Eyecare Center. "This new test lets patients learn if they have an eye misalignment, which can be the cause of eye strain, frontal headaches, neck and shoulder pain, light sensitivity, dry eye, and discomfort with computer or other close-up tasks."

The 360-degree patient experience while using the N3 headset delivers incredible accuracy in measurement, down to a fraction of a prism diopter, providing the most optimal information for determining if correction is needed. For patients with a misalignment, a special corrective lens known as Neurolens can be recommended to alleviate uncomfortable symptoms.

Neurolens is a unique, patented lens that uses a contoured prism to adjust the amount of correction as your eye looks downward through the lens.

"Normal lenses are designed to help you see better, and Neurolens does that too. But what sets Neurolens apart is that it's designed to help you feel better as well," Dr. Premer says. "The N3 testing technology is recommended for anyone who uses screens more than a couple hours per day, and is available at no charge to our patients during their routine eye examination."

For more information or to make an appointment, call 620-792-2020.



THE BEST BUSINESS TECHNOLOGY EVENT
IN THE AREA IS COMING, DON'T MISS IT!

TECHEDGE

Presented by Nex-Tech

WEDNESDAY, JUNE 5TH
8:00 A.M. - 4:00 P.M.
TONY'S PIZZA EVENT CENTER - SALINA



SCAN
to learn more!

Don't miss out on

\$10,000+
WORTH OF
PRIZES!

One Day a Year.
One Amazing I.T. Event.



It's time to
CRANK IT UP
to maximum efficiency

COMFORT PRO Inc.



Increase efficiency 24 -
34% with a tankless
water heater.



\$180 per year savings
through proper use of
a programmable
thermostat



Even if your A/C is only 10 years old, you may save
20-40% in energy costs by replacing it with a newer,
more efficient model.

*All numbers are according to energy.gov

Let us help you
increase your home's
efficiency and save
you money all year
long.

bryant

Heating & Cooling Systems

**WHATEVER
IT TAKES:**

620-793-4208
www.comfortproks.com

Garstecki named president of BCC



“My wife Kacie and I are beyond excited to join the Barton Community College family. We sincerely appreciate the hospitality and warm welcome we received during the interview process. One thing that we were looking for through this process was a place that felt like home. While we were on our visit, we sensed a genuine, close-knit, family atmosphere from everyone we met, making this an easy decision for us,” said Dr. Marcus Garstecki.

During a special Board meeting on Jan. 30, the BCC Board of Trustees announced Dr. Marcus Garstecki as Barton’s sixth president.

With over 25 years of experience in

higher education, Dr. Garstecki has led enhancements in student recruitment efforts, implemented a comprehensive enrollment plan, and helped develop strategies for leveraging scholarship dollars, all of which led to increased enrollment at Northern State University (NSU) in Aberdeen, S.D. He currently serves as the chief enrollment management officer at NSU. He has served as the vice president for student affairs and dean of students at Dakota State University–Madison, where he led enrollment efforts that resulted in significant increases in freshmen, transfer, and re-entry students, as well as increased retention percentages. These efforts led to the school’s largest enrollment numbers to that point. Before that, he was vice president for the Mid-Plains Comm. College–North Platte campus, where he led strategic planning initiatives, including improvements in the arts, workforce training, and high school partnerships.

“I am honored to be selected as the next president of Barton Community College,” Garstecki said. “I want to thank Chairman Johnson and the entire Board of Trustees for the trust you have placed in me to lead this great college into the future.”

GBED Launches CO.STARTERS Program

Great Bend Economic Development, Inc. (GBED) will soon offer CO.STARTERS Core, a ten-session, cohort-based program that equips entrepreneurs of all kinds with the insights, relationships, and tools needed to turn business ideas into action.

Drawing from the experience of successful entrepreneurs and startup veterans from around the globe, CO.STARTERS walks creative small business owners through lean, effective business modeling methods in a simple and intuitive way, while connecting them to a supportive community of peers and mentors. Rather than treating a venture like a large corporation and writing a detailed business plan, CO.STARTERS participants are encouraged to build and test small models first. In the process, participants receive real-time customer feedback, update their models to meet customer needs and avoid creating businesses based on incorrect assumptions.

In Great Bend, CO.STARTERS will be implemented and facilitated by GBED. GBED offers a robust and comprehensive path to guide entrepreneurs through every stage of their business journey. The ten-week

CO.STARTERS Core program will kick off on April 3rd. This first cohort will meet on Wednesday evenings from 6 pm to 9 pm. The value of the class is over \$2500 with the services and materials included, GBED has been able to have fees subsidized with sponsorships so participants pay \$250. GBED is offering a rebate for participants if they attend 8 of the 10 classes they receive a \$100 rebate. The class size is limited, so apply today.

GBED learned through the first year of IGNITE Rural Business, Barton County’s shark tank-style competition, that local entrepreneurs are in the area. They need support, education, and the tools to be successful and sustain growth for their business and the community at large.

For more information on CO.STARTERS, visit costarters.co. To learn about CO.STARTERS in Barton County, visit www.gbenedinc.com/costarters. A link to the Core application can be found on that landing page.

People on the Move



With Sunflower Electric Power Corp. since 2010, Derek Vonada was promoted to manager of transmission substation design. He will be responsible for managing the daily activities of the transmission substation design engineering group, ensuring compliance with all applicable standards and laws.

Vonada is a native of Sylvan Grove, Kan., and a graduate of Kansas State University, earning his Professional Engineer license in 2015. He has a strong substation design, system protection and project management background and has been involved with numerous substation and transmission line projects at Sunflower.



2024 Pantone Color of the Year

Peach Fuzz, the pastel neutral, is on trend for apparel, accessories, and other promotional products.

Edith Solorzano, Identifications Co. ASI Distributor, shares her perspective on the trend, stating, “It perfectly represents trends we’re seeing in the market now— a rise in neutrals, emphasis on timelessness, and an attraction to the softness found in nature.”

Pick Me Up!

So rarely do we think about the joy, companionship, even Health benefit of our family pets. The unconditional love they bring.... When a death or a health condition like a stroke or Alzheimer's makes caring for the pet not possible the pet is often sent to a humane society to be re-homed. Those that care for the animals at the humane society have a tough job and never enough acknowledgement for their work and compassionate care.

The Pilot Club of Great Bend gave the Golden Belt Humane Society a Pick Me Up to show our appreciation of their tireless care and contribution to the community.



Aktion Club

Rosewood Miracle Workers AKTION Club completed its annual community blanket drive this spring by donating to the Barton County Health Department and Family Crisis Center.

Family Crisis Center recently started providing blankets with bags to area hospitals for patients involved in the Sexual Assault Nurse Examiner Program. Barton County Health Department gives them to infants that just got home from the hospital and parents who cannot afford enough blankets.

Rosewood AKTION Club is an affiliate of the national Kiwanis organization that promotes service in action for people with developmental disabilities.



Suspenders4Hope

"This training applies to home, church, the workplace and school – anywhere. We all need skills to be resilient and find meaning and purpose in life. Sometimes all we need is someone to care about us." Said Jeff McQuade, Care Coordination Veterans' specialist at The Center for Counseling & Consultation, 5815 Broadway.

Julie Kramp, executive director at The Center said, "There was so much valuable information offered, the session on 'protective factors' stands out." These factors include access to effective care; connections with other people; coping skills; positive self-esteem; and religious, cultural or personal beliefs that discourage suicide.

Suspenders4Hope is a comprehensive suicide prevention and mental health training program that started at Wichita State University in 2015. They aim to support Kansas communities with mental health struggles similar to how suspenders support your britches. Kramp, McQuade and Melissa Ewing of Dropping 22 attended this training and bring back quality, engaging, evidence-based resources to Great Bend.

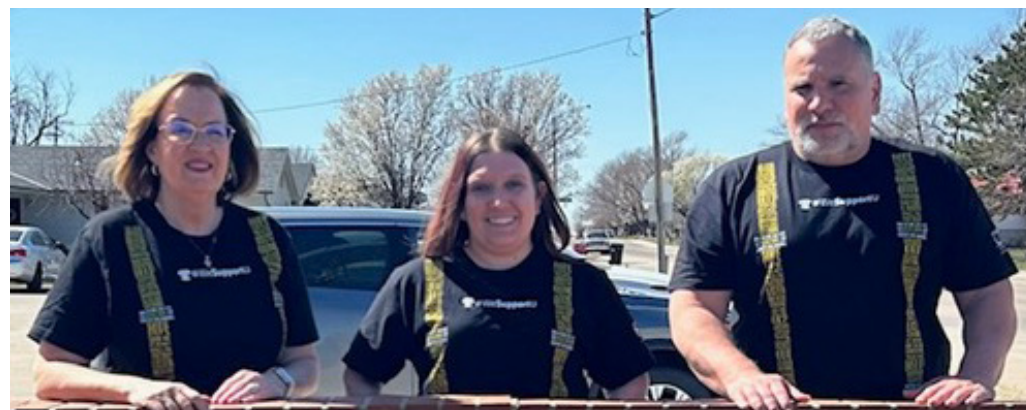
"Highlights included the importance of access to mental-health services and staying connected in your community," Kramp said. The national 988 crisis lifeline number is always an option. "Those who answer 988 calls are trained and equipped to connect you with the best resources for your circumstances," Kramp explained. "If it is a crisis, 988 can oftentimes de-escalate the problem."

McQuade pointed out the "quick reminders" discussed during the training were especially helpful. "Your role as a friend or family member is to be present, listen and show support. "Second, trust your gut. If you think someone needs to talk, ask about it." Another reminder he mentioned is "we do the best we can with the information we had at the time."

"Suspenders4Hope pairs community awareness and action to make a difference in the number of suicides. The training was presented in a way that will help others ask hard questions and share concerns about suicide. This is not easy or comfortable. Nevertheless, the training will help others prepare to have these conversations." Ewing also noted that she was especially pleased to learn about resources that she hadn't been aware of earlier. Her plan is to provide Suspenders4Hope training to Dropping 22 board members and the populations they serve.

Dropping 22, 916 Williams, Great Bend, is a non-profit organization dedicated to reducing the risk of suicide and improving mental health for veterans, first responders, the military community and their families.

The Center for Counseling & Consultation is a Community Mental Health Center serving Barton, Pawnee, Rice and Stafford counties. Professionally trained personnel offer: individual and group therapy; marriage and family counseling; community-support services; community-based services; psychosocial rehabilitation; peer support; and medication management. The confidential 24/7 crisis hotline number is 800-875-2544.



HIGHLIGHTED EVENTS IN APRIL

- 1...Hamburger Night - American Legion Post 180, 1011 Kansas Ave, 5:30 PM
 3...ICC Developmental Fair Screenings, Great Bend Public Library, 3:30 PM
 3...CO.STARTERS Core, Online, 6:00 PM
 4 - 6...Eggstravaganza Event In Stores, at local participating stores, 8:00 AM - 5:00 PM
4...Chamber Coffee - Wheatland Electric, 200 10th St, 9:00 AM - 10:00 AM
4...Ribbon Cutting - R&R Roofing, 701 Main St, 10:00 AM - 10:30 AM
 4...BCC: Student Music Recital, 245 NE 30 RD, 5:00 PM - 7:00 PM
 5 - 6...Alltex Trade Gun and Knife Shows
 6...KSHSAA Regional Music Festival - All Day
 6...Spring Garden Basics Series, Great Bend Public Library, 10:30 AM - 11:30 AM
 6...Charcuterie and Wine Pairing Class, Corinthians Hill Event Center, 3:00 PM - 4:00 PM
 7...Optimist Sloppy Joe Dinner and Dessert, Walnut Bowl, 11:00 AM - 2:00 PM
 7...Food Truck Sunday, Encounter Church, 601 S Patton Rd, 12:15 PM - 3:00 PM
 8...Golden Belt Community Concert Association - ABBA Tribute, 1214 Stone St, 7:30 PM
 10...AG Program Career Expo, BCC, 245 NE 30 RD, 3:00 PM - 6:00 PM
11...Chamber Coffee - Barton County Historical Society, 85 US-281 Hwy, 9:00 AM
12...Ribbon Cutting - Bomgaars, 5320 10th St, 10:00 AM - 10:30 AM
 12...Shafer Art Gallery Exhibit Reception, 245 NE 30 RD, 6:30 PM - 7:30 PM
 12...Dancing with the Cougars "Spring Swing" Fundraiser, 245 NE 30 RD, 6:30 - 8:30 PM
 12...VFW Post 3111: Karaoke Night!, 504 Washington Ave, 9:00 PM
16...Pints & Politics, Dry Lake Brewing, 1305 Main St, 4:30 PM
 17...Move Your Mountain Coaching - Leadership Experience Class, Deadline to Register
18...Chamber Coffee - Eyecare of Great Bend, 913 McKinley St, 9:00 AM - 10:00 AM
18...Ribbon Cutting - The Beauty Bar Salon, 1409 Main St, 10:00 AM - 10:30 AM
 18...BCC: Spring Choral Concert, 245 NE 30 RD, 7:30 PM - 8:30 PM
 20 - 21...USSSA Baseball Tournament
 20...Laundry Love, 924 Jefferson St, 10:00 AM - 2:00 PM
 20...BCC: Guest Artist Piano Recital, Dr. Ivy Lu Wang, 245 NE 30 RD, 6:00 PM - 7:30 PM
 21...14th Annual BCC Foundation Sporting Clay Shoot Fundraiser: Camp Aldrich, 9:00 AM
 21...VFW Post 3111 Brunch, 504 Washington Ave, 9:30 AM
24...Ribbon Cutting & Hot Dog Feed - Hertz Rental, 2602 10th St, 11:00 AM - 12:00 PM
 24...Wheatland Electric Annual Meeting, 3111 10th St, 11:00 AM - 1:00 PM
25...Chamber Coffee - Kelly's Garden Sense, 134 NE 10 Ave, 9:00 AM - 10:00 AM
25...Ribbon Cutting - The Handlebar & Grill, LLC, 10:00 AM - 10:30 AM
 25...Great Bend Community Theatre, 1905 Lakin Ave, 7:30 PM - 9:30 PM
 26...Fridays on Forest!, Forest Avenue - Williams to Main St, 5:00 PM - 9:00 PM
 26...American Legion Fried Chicken Friday, 1011 Kansas Ave, 5:30 PM - 7:00 PM
 26...Military and First Responders Night Out, 916 Williams St, 6:00 PM - 8:00 PM
 26..."Moving in the Heartland," Dance Festival Night One, BCC, 7:00 PM - 9:00 PM
 26...GB Community Theatre, The Red Velvet Cake War, 1905 Lakin Ave, 7:30 PM - 9:30 PM
 27...Juvenile Services Parkinson's Walk, Jack Kilby Square, 9:00 AM
 27...American Legion Family Day, 1011 Kansas Ave, 10:00 AM - 3:00 PM
 27...Shafer Art Gallery Awards Reception, 245 NE 30 RD, 1:00 PM - 2:00 PM
 27...Cajun Connection - Dry Lake Brewery, 1305 Main St, 5:00 PM - 8:30 PM
 27...BCC: "Moving in the Heartland," Dance Festival Night Two, BCC, 7:00 PM - 9:00 PM
 27...GB Community Theatre, The Red Velvet Cake War, 1905 Lakin Ave, 7:30 PM - 9:30 PM
 28...Child Abuse Prevention Scavenger Hunt, Brit Spaugh Zoo, 2:00 PM - 4:00 PM
 28...GB Community Theatre, The Red Velvet Cake War, 1905 Lakin Ave, 2:00 PM - 4:00 PM
 30...Annual Candy Blast, Encounter Church, 601 S Patton Rd, 12:00 PM - 2:00 PM

Recurring Events:

GB City Council Meetings, 1st & 3rd Mondays, City Hall, 1209 Williams, 6:30 pm
 Barton County Commission Meetings, Tuesdays, 1709 Main St, 9am
 Visit greatbend.org/events/calendar for a full list of great events!

STAY INFORMED AT GREATBEND.ORG

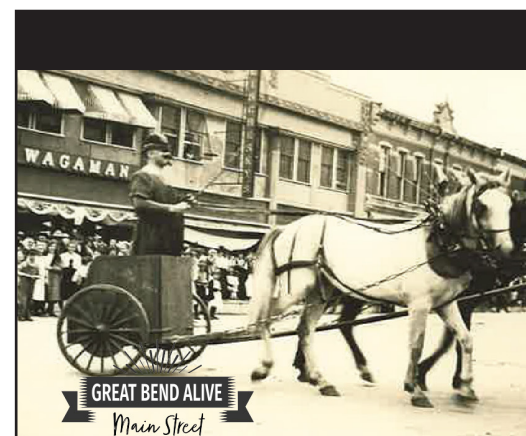
**GREAT BEND REC
SUMMER PROGRAMS**

**ENROLL
MAY 6**

**CRAFT CLASSES,
SWIM LESSONS,
DAY CAMPS,
& MORE**

GREAT BEND REC

620-793-3755 1214 Stone Street greatbendrec.com



**Would you or your business
like to participate in the
Great Bend Alive
Parade through Time?**

**Pick an era and join us
on May 31st!**

gbedinc.com/mainstreet

**Need help deciding?
We can help! info@gbedinc.com**



CELEBRATING OVER 58 YEARS OF SERVING PEOPLE WITH DEVELOPMENTAL DISABILITIES!

There is a Difference.

- EARLY EDUCATION
- CASE MANAGEMENT
- DISABILITY SUPPORTS
- RESIDENTIAL ASSISTANCE
- COMMUNITY EMPLOYMENT
- RECYCLING & MANUFACTURING
- GENERAL PUBLIC TRANSPORTATION & MUCH MORE!

620-792-1325
WWW.SUNFLOWERDIV.COM



CHAMBER COFFEE SCHEDULE

Every Thursday | Doors Open at 9am | Program at 9:30am

April 4th WHEATLAND ELECTRIC 200 10th St

Wheatland Electric Cooperative, Inc., is an electric distribution co-op serving southwest/central KS. Attend this Chamber Coffee to learn the power of the cooperative difference. Learn more at weci.net or connect on Facebook.

April 11th BARTON COUNTY HISTORICAL SOCIETY 85 US Hwy 281

Explore the latest additions and updates at the Barton County Historical Society. Engage with our exhibits and discover the evolving narratives of Barton County's heritage.

April 18th EYECARE OF GREAT BEND 713 McKinley St

Dr. Douglas Ayre is dedicated to providing exceptional eye care for your whole family in a welcoming and comfortable environment in two locations Larned and Great Bend, Kansas. He is excited to announce a new doctor joining his team!

April 25th KELLY'S GARDEN SENSE 134 NE 10 Ave

Kelly's Garden Sense helps homeowners and commercial clients create an outstanding first impression. Our goal is to go beyond just landscaping and be creative to provide client with something truly unique. Why be ordinary- when you can have extraordinary?!?

May 2nd MICHELE GREGG - ICT INSURANCE 1724 Main St

ICT is the expert at providing health insurance for individuals and families. We can help you find a variety of Medicare and private medical insurance plans to meet your individual or family's needs. Our Kansas health insurance brokers work with many insurance companies to ensure that the plans you select can save you money and offer great coverage.



Committed to Caring for the Great Bend Community

Providing the Great Bend community greater access to the resources of the only academic health system in Kansas. Together, we are committed to ensuring the continued well-being of this community, close to home.

kansashealthsystem.com/greatbend



3307 10th Street • Great Bend, KS 67530
McDonald's
is providing coffee for Chamber of Commerce coffees.



Save the
Date!

THE BEAUTY BAR

You are invited to our

10th Anniversary Celebration!

April 16 - 20

*Raffle
Prizes!*

April 16 : Goody Bags + \$5 Brow Waxes

FREE goody bags to the first 25 guests!

April 17 : Hairspray Sale!

April 18 : Treatment Day!! \$40 per spot

Appt includes your choice of Scalp Facial or Glass Gloss treatment + Blowout
Includes \$20 retail credit day of event. Mimosa Bar + Mini Cheesecakes included!

April 19 : All Salon Retail on Sale!

Buy 1, get 10% off, Buy 2 Get 15% or Buy 3+ and get 20% off!

April 20 : Local Business Pop-Up Shop!!

Details announced soon!

Friday retail promo also available Saturday

1409 Main St - Great Bend KS

WWW.THEBEAUTYBARSLONGB.COM



FUEL
FOCUS·UNITE·ENGAGE·LEAD
BARTON COUNTY
A PROGRAM OF
GREAT BEND
CHAMBER OF COMMERCE

ANNUAL SPONSORSHIP OPPORTUNITIES

PLATINUM SPONSOR - \$1000 (FOCUS)

Name and Logo at all events. Free e-mail marketing to FUEL members. Host 1 networking mixer AND 1 leadership/development luncheon. Membership signage for business.

GOLD SPONSOR - \$750 (UNITE)

Logo on Sponsor Board at all events. Host 1 networking mixer OR leadership/development luncheon. Membership signage for business.

SILVER SPONSOR - \$500 (ENGAGE)

Sponsors FUEL to have paid advertising. Host 1 leadership/development luncheon. Logo on Sponsor Board at all events and any paid advertisement. Membership signage for business.

BRONZE SPONSOR - \$250 (LEAD)

Logo on Sponsor Board at all events. Sponsors snacks and refreshments at various events throughout the year. Membership signage for business.

SWAG SPONSOR - \$100

Logo on Sponsor Board at all events. Sponsors FUEL purchased swag. Provide your company swag for FUEL events as door prizes, raffle items, etc.

Sponsorships run Jan through Dec and cannot be pro-rated

Email us at fuelbc@greatbend.org or call the Great Bend Chamber Office at 620-792-2401

CHECK OUT THE LATEST NEWS FROM THE GREAT BEND CHAMBER BUSINESS COMMUNITY!

OUTLOOK

GREAT BEND
CHAMBER OF COMMERCE

A MONTHLY PUBLICATION OF THE
GREAT BEND CHAMBER OF COMMERCE

business journal

1921



YEARS 2021

Great Bend Chamber of Commerce
1125 Williams Street
Great Bend, KS 67530

- RETURN SERVICE REQUESTED -



PRESRT STD
U.S. POSTAGE
PAID
PERMIT NO. 4



Sunglass SHOW

HUGE SELECTION • DISCOUNTS • GIVEAWAYS

Saturday, May 18th

9 AM - 1 PM



10th Street Eyecare Center | 2601 10th St, Great Bend, KS 67530