

OUTLOOK

GREAT BEND
CHAMBER OF COMMERCE

business journal **ONLINE**

AUGUST 2023

VOLUME 102 NO. 8

1921



YEARS 2021

Friend, neighbor and partner.

We're committed to the health of your employees.

Chamber Blue of Kansas

EMPLOYER GUIDE

BENEFITS BROCHURE



Interest Survey is Now LIVE!

SUBMIT NOW



Submit Survey by August 17th

Timeline:

- July 5th-August 17th: Interest Survey is Live
- October: Rates will be released
- November 1-15: Enrollment Period
- December 22: ID cards mailed

The Great Bend Chamber of Commerce is happy to once again offer health insurance to members through Blue Cross Blue Shield. The interest survey for the 2024 plan year is open until August 18th. Existing Chamber Blue members don't need to complete the survey. Enrollment is in November, and ID cards are mailed by December 22nd. Visit bcbsks.com/chamberblue for more info.



COFFEE SCHEDULE



FEATURED AMBASSADOR



CALENDAR



NEW MEMBERS



Click to jump to the story or link

Advancing Barton County Childcare (ABCC) Secures \$2.2 Million Grant from Kansas Children's Cabinet Child Care Capacity Accelerator Grant

The Kansas Children's Cabinet and Trust Fund has announced the approval of an impressive \$43,593,294 in grant funding awards, benefiting 52 organizations and partnerships across the state. Among the top recipients, Advancing Barton County Childcare (ABCC) proudly ranks in the elite top 4 awards for Kansas communities, receiving a substantial grant of \$2,238,630. This remarkable achievement propels ABCC's mission to establish affordable and accessible childcare facilities within Barton County.

ABCC's aims to address the escalating demand for childcare capacity within our community, while also catering to the workforce needs of the region. Spearheaded by Great Bend Economic Development (GBED), ABCC has assumed the crucial responsibility of securing funding and constructing cutting-edge group daycare centers in Barton County. With the pressing demand for reliable and accessible childcare services in mind, this significant grant will propel ABCC forward in realizing their vision of establishing the first two premier daycare centers in Barton County.



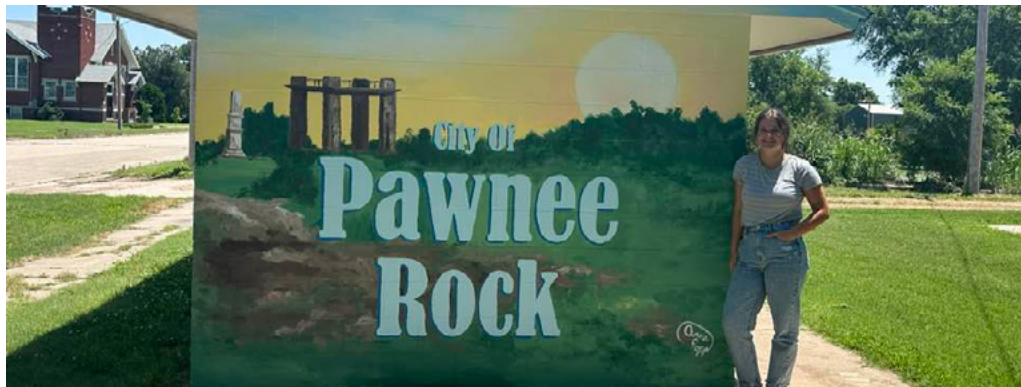
The first facility, which will be located at Farmer's Plaza on the corner of 10th Street and K-96 Highway, is now fully funded, thanks to this substantial grant. ABCC will mark this momentous milestone with a groundbreaking ceremony scheduled for July 11th at 9 am. The event promises to be a moment of celebration and anticipation, as ABCC unveils exciting developments surrounding their endeavor.

The Accelerator Grant, awarded by the Kansas Children's Cabinet and Trust Fund, will enable ABCC to collaborate with community-based teams, including early childhood providers, champions, employers, and economic development leaders. Together, they will forge ahead in their collective efforts to create affordable and accessible childcare seats throughout the region.

GBED and ABCC is deeply grateful for the unwavering support of the Kansas Children's Cabinet and Trust Fund, whose recognition of this project's importance will significantly contribute to the fulfillment of the organization's mission.

Making a Difference in our Community

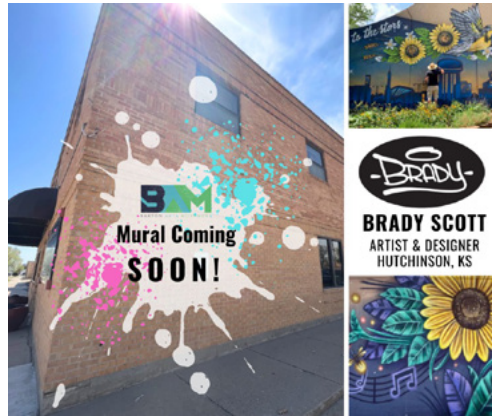
KU student and Great Bend resident, Anna Popp, donated more than two weeks of her time and talent to the Pawnee Rock Revitalization Project by designing and executing an amazing mural to complement the historic community and the city park's revitalization efforts. One of the goals for the TruStage™ Community Impact Day (formally CUNA Mutual Group) back in May 2023 was to paint a mural on the freshly painted public restroom building facing the main street through Pawnee RoPack. Laura Straub reached out to Anna to see if she would be interested in the project. She not only agreed to paint the mural but chose to contribute her time and talents at no cost – just her way of giving back to Barton County. TruStage™ and the Pawnee Rock Revitalization Committee cannot thank her enough for her generosity. With the pavilion now complete and the mural finished, Pawnee Rock celebrated Independence Day with a bang!



Exciting Update: Sunflower-themed Mural Coming to Great Bend Chamber of Commerce Building This Week!

The Great Bend Chamber of Commerce is delighted to announce an exciting collaboration with the Barton Arts Movement (BAM) to bring a stunning sunflower-themed mural to the north side of their building located at 1125 Williams Street in downtown Great Bend. The project will be led by talented artist Brady Scott from Hutchinson, Kansas, promising to add a vibrant touch to the heart of the city.

Affectionately known as the Sunflower Center, the building will soon showcase a bright and colorful mural, celebrating the state's beloved flower and embodying the Kansas spirit. The initiative was inspired by the memory of Reta Brack, a long-time



supporter and volunteer of the Chamber, whose legacy will be honored through this artistic endeavor.

Residents and visitors alike can look forward to witnessing the transformation of the blank wall into a mesmerizing piece of public art. The painting of the mural is scheduled to take place from **July 31st to August 6th**, weather permitting.

Stay updated on the progress of this exciting mural and other creative projects by following the Barton Arts Movement on Facebook. Let's come together to celebrate the essence of Kansas with this sunflower

mural gracing our beloved Sunflower Center in downtown Great Bend.

BCYP Exciting Back-to-School Events!

Back to School Pool Party - August 6th

Barton County Young Professionals is thrilled to invite all families in the community to a fantastic Back-to-School Pool Party! Join us on August 6th at the Hoisington City Pool for an evening of family fun and excitement. The event will kick off at 6:30 PM with hot dogs, generously sponsored by Sunflower Diversified, along with delicious chips sponsored by Shull Construction. Quench your thirst with refreshing drinks, provided by Wheatland Electric!

New Teacher Mixer - August 10th

Barton County Young Professionals, in collaboration with Dry Lake Brewing, Great Bend Chamber of Commerce, and USD 428, is delighted to extend a warm welcome to all new teachers in the area. The New Teacher Mixer will take place on August 10th from 4:00 PM to 6:00 PM at the vibrant Dry Lake Brewing.

This mixer will bring a fun experience for new educators, featuring delicious food, refreshing drinks, and the opportunity to connect and network with fellow professionals. As you socialize, be sure to participate in the exciting activities and stand a chance to win fabulous prizes!

The Barton County Young Professionals are committed to supporting the local community, especially as the new school year begins. These events provide an excellent opportunity for families to enjoy some summer fun and for new teachers to feel embraced and welcomed into our wonderful community!

Belt at Heart of Kansas



Julie Belt, a certified psychiatric mental health nurse practitioner (PMHNP), has joined Heart of Kansas Family Health Care as their new mental-health services provider. With over two decades of nursing experience, Belt is passionate about helping people from all backgrounds and is dedicated to addressing mental health needs in Kansas. Her career began as a certified nursing assistant in long-term care, and her desire to care for people led her to advance her nursing education. Belt believes in raising awareness about the importance of mental health, considering it just as vital as physical health.

Belt sees patients at the Heart of Kansas Great Bend office on Mondays, Tuesdays, and Thursdays, and on Fridays from 8 a.m. to noon. She is also available at the Heart of Kansas Larned location all day on Wednesdays. She holds an associate's degree in nursing from Barton Community College, a bachelor's in nursing from Tabor College of Wichita, and a master's in nursing, family nurse practitioner from Walden University. Additionally, she earned her PMHNP credentials at Maryville University. Before joining Heart of Kansas, Belt served in various healthcare roles, including director of nursing at Diversicare of Larned. Her achievements include leading a deficiency-free survey at Diversicare and contributing to the development of the Licensed Mental Health Technician Program at Larned State Hospital. Julie Belt is excited to be part of the Heart of Kansas team, where she finds everyone friendly and welcoming. The health center continues to expand its services, providing comprehensive care to patients. Belt and her husband, Ryan, have five children, and she comes from a family with a strong presence in healthcare, including her parents and three siblings.

Brett Middleton, the CEO of Heart of Kansas, expressed his appreciation for Julie Belt joining the team, praising her extensive education and compassionate approach. As a Federally Qualified Health Center, Heart of Kansas is committed to being a safety net for uninsured or underinsured patients, welcoming everyone in the Great Bend, Larned, and Stafford locations. Julie Belt's expertise and dedication promise to make a positive impact on the mental health services offered at Heart of Kansas Family Health Care, benefiting the well-being of the community they serve.

Romine Promoted to Director of Surgery at Clara Barton



Clara Barton Medical Center announced this week that Valerie Romine, RN, BSN, has been promoted to the position of director of surgery. Romine has been an employee at Clara Barton since January 2010, serving as the assistant manager of the surgery department. Romine grew up in Great Bend, graduating from Great Bend High School in 1978. She then attended Barton Community College where she received her associate in general studies in 1981. Continuing her education, Romine attended Wichita State University and obtained her Bachelor of Science in Nursing in 1983. Surgical services have been Romine's area of focus since 1986. She gained experience working at Rush County and Great Bend Regional hospitals before getting hired at Clara Barton in 2010 as the assistant manager of the surgery department.

Romine was selected to succeed long-time Director of Surgery Kim Tutak after her retirement. She was mentored by the leadership of Tutak until earlier this year, when she officially assumed all duties as the director of surgery. "It's a privilege to come to work every day where the staff are passionately driven to provide excellent care to our surgical patients and families," said Romine. "We work as an exceptional team, knowing what we do has a direct impact on positive surgical outcomes for our patients. This is an outstanding surgical services department that I am proud to be a part of." Romine and her husband, Kent, have two adult sons. In her spare time, she enjoys traveling with her family, collecting cookbooks, and gardening. She is also a member of the Barton Nursing Advisory Board. "Val offers a wealth of surgical knowledge and experience that will allow our surgical department to continue to provide exceptional surgical and patient care," said Amanda Hoffman, interim CEO/pharmacy director at Clara Barton.



New to investing? We can get you started.

Kris Sundahl	Todd Armatys	Jim Armatys	Jim Vopat
Financial Advisor	Financial Advisor	Financial Advisor	Financial Advisor
2016 19th St 620-603-0340	1904 Broadway 620-793-5481	1904 Broadway 620-793-5481	2421 10th St. 620-792-5095

MKT-5894L-A-A1 AECSPAD



IT'S 20

DO YOU KNOW HOW OLD YOUR HVAC SYSTEM IS?

23





Heating & Cooling Systems

WHATEVER IT TAKES.

Your old system is costing you!

Upgrade and enjoy peace of mind and energy savings for years to come.

1-800-937-3030

www.comfortproks.com





[Event Registration Page!](#)



The 18th Annual Great Bend Chamber Golf Tournament is just around the corner, and we want YOU to be a part of this fantastic event! This year's tournament promises to be better than ever, with exciting contests, fantastic prizes, and plenty of opportunities to get your business in the spotlight. Whether you're a golf pro or simply looking to boost your visibility, we have sponsorship packages tailored just for you.

Why Sponsor?

Sponsoring the Great Bend Chamber Golf Tournament comes with an array of benefits that will give your business the recognition it deserves. All sponsorships include fantastic perks, such as being featured in day-of program materials, event public outreach, greatbend.org's event page, and social media promotions.

- **Hole Sponsor (\$150):** Can't join the game? No problem! Become a Hole Sponsor, and we'll place your logoed sign on one of the holes, ensuring visibility throughout the tournament.
- **Mulligan Ball Sponsor (\$250):** Provide logoed balls for the tournament (1 ball / team) and let your brand shine on the course.
- **Lunch & Clubhouse Awards Social Hour Sponsor (\$300):** Underwrite catered boxed lunches, snacks, and post-play appetizers to fuel the players while showcasing your business.

- **\$10K Hole in One Sponsor (\$500):** Be the hero who underwrites insurance procured by the Chamber for the thrilling Hole in One contest.
- **Hole Contest Sponsors (\$750 each):** Pick from various contests like Men's Longest Drive, Women's Longest Drive, Longest Putt, Closest to the Pin, and more. You'll set up flags, signage, and tents at your chosen hole to interact with players and present the winner with an award.
- **Beer Cart Sponsor (\$750, 2 available):** Get your logo on the cart and cooler as you serve up cool beverages and mingle with players throughout the day.
- **Golf Tournament Corporate Sponsor (\$1000, 4 available):** Including a promo video featuring your business, and the chance to set up your own sponsor flag, signage, or tent.
- **Golf Tournament Scorecard Sponsor (Exclusive, \$2000):** Get your brand exclusively featured on the
- **Golf Tournament Premier Sponsor (\$2500):** Your ultimate package includes team registration, a promo video, and the opportunity to set up your sponsor flag, signage, or social tent.



18TH ANNUAL

GREAT BEND

CHAMBER OF COMMERCE

GOLF TOURNAMENT

SCAN ME



Not a golfer?
Clubhouse Party
only \$25
4-6PM

SEPT. 22

9:30 AM REGISTRATION

10 AM SHOT GUN START

4 PM AWARDS

PRIZES AWARDED TO TOP TEAMS

LAKE BARTON GOLF COURSE
GREAT BEND, KS

\$115 | **\$450**

ONE PLAYER

FOURSOME

\$10K Hole-In-One Contest
You Hit it, You Win it!
Lana's Catering + Goodies

FOR MORE INFORMATION, CONTACT: Edith Solorzano 620-792-2401

CUT DOWN ON THE LONG LINE AT REGISTRATION WITH A PREPAY OPTION!

ONLINE REGISTRATION: WWW.GREATBEND.ORG

Schedule your Chamber Coffee Today!



Email marketing@greatbend.org for more information.

GREAT BEND
CHAMBER OF COMMERCE

June 2023 Labor Report

Please find the links below to the June 2023 Labor Market report and interactive map of county & state unemployment rates. I have attached the June 2023 Unemployment Map.

- **June Unemployment Rates/Labor Market Report:** <https://lnkd.in/esYFqz72>
- **Interactive Unemployment Rate Map:** <https://lnkd.in/gByJHpmD>

The July 2023 Labor Report will be released on Friday, August 18, 2023.

Strengthening Workplace Culture

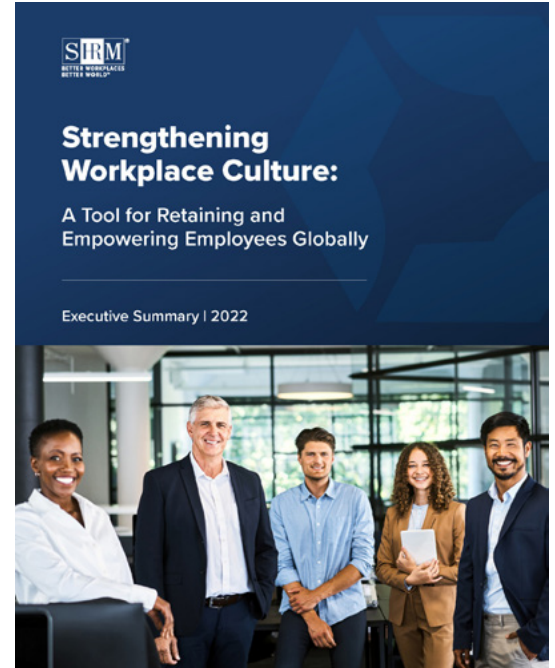
Two years after the pandemic began, organizations are still adjusting to the COVID-19 world. From government

shutdowns and supply chain disruptions to a mental health crisis, the pandemic has adversely affected the world of work in myriad ways. Today's employers are finding it increasingly difficult to recruit new staff, making it all the more challenging to grow their business and the economy. The elusiveness of talent is unprecedented.

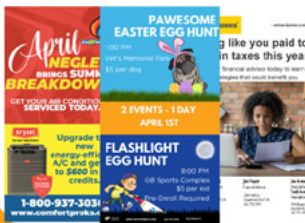
But there is good news to be found, if you look for it. In 2019, SHRM published *The High Cost of a Toxic Workplace Culture: How Culture Impacts the Workforce—and the Bottom Line*, which outlined the monetary and psychological costs of a negative workplace culture.

In 2021, SHRM published a follow-up report, *The Culture Effect: Why a Positive Workplace Culture Is the New Currency*, which found that positive workplace culture was a guiding light that helped U.S. workers and businesses make it through the pandemic. But do these trends also hold on a global scale? To better understand the importance of workplace culture, SHRM conducted a study in 12 countries to identify workplace trends across the globe.

Click on the link to continue reading: <https://www.shrm.org/hr-today/trends-and-forecasting/research-and-surveys/pages/2022-global-culture-report.aspx>



Advertise Your Business Here!
Display Advertising Monthly Color Ad (2.75" w X 5" h)
8 Print Issues Available + 4 Digital Issues w/ Links
\$150 Per Month

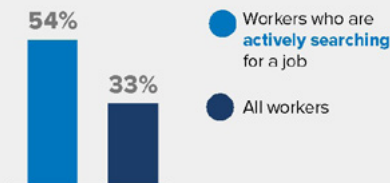


To Reserve Your Monthly Color Ad: Marketing@greatbend.org
Or Scan the QR Code for More Information



GREAT BEND
CHAMBER OF COMMERCE

Workers who say their manager **doesn't know how** to lead a team:



45% of workers globally have thought about **leaving** their current organization.

64% of workers who rate their work culture as **poor** have **actively searched for a job** in the past six months.

22% of workers who rate their work culture as **good** have **actively searched for a job** in the past six months.



Brace yourselves, because the 8th Annual Great Bend Business Showcase is just around the corner! The Great Bend Chamber of Commerce, in collaboration with USD 428, is all set to host this exciting teacher appreciation event on Thursday, August 17th from 8:30 a.m. to 10:30 a.m. inside the Panther Activity Center (PAC).

Calling All Businesses - Join the Fun!

This is a golden opportunity for all businesses, whether you are a Chamber member or not, to shine bright and showcase your products and services. So, mark your calendars and get ready to grab a spot at the event. The best part? Registration is a breeze! For Chamber members, it's only \$50 and for non-members, it's \$75. What a fantastic chance to make an impression!

A Showcase with a Heart

Not only will you get the opportunity to highlight your business, but this showcase is also about appreciation and support for our incredible teachers and staff members. It's a time to show them some love and gratitude as they gear up for the new school year.

Time is Ticking - Don't Miss Out!

We can't stress this enough - the deadline for booth reservations is August 10th at 5 p.m. Hurry and secure your spot, as spaces are limited, and we don't want anyone to miss out on this fantastic opportunity.

Barton Community College Offering Guitar Lessons



Barton Community College is accepting students for individual lessons and a group guitar class this fall, and all classes will be taught by the new instructor, Aleia Gonzalez, a world-class guitar player from Paraguay.

The group guitar class meets Tuesday evenings from 6:30-7:50 p.m., and classes start on Aug. 16. Students will learn basic guitar skills and how to read music from staff, tablature, and chord charts. In addition, students will learn how to play simple melodies and accompaniments with different strumming and fingerpicking patterns. The class material will introduce a variety of styles, such as pop, folk, and classical, as well as basic improvisation. Individual lessons can be tailored to different skill levels and are scheduled on a case-by-case basis.

Gonzalez is a classical guitarist from Paraguay, and she holds a master's degree in guitar performance from the University of Missouri-Kansas City. She is an active performer in the Kansas City metropolitan area. She frequently presents solo recitals and collaborates with singers, instrumentalists, and ensembles and likes including pieces from her home country in her concert repertoire as well as new music by living composers. She is a Kansas City Guitar Society and Salt Creek Song Festival board member. Previously, she taught at Washburn University in Topeka, Rockhurst University in Kansas City, and MidAmerica Nazarene University in Olathe.

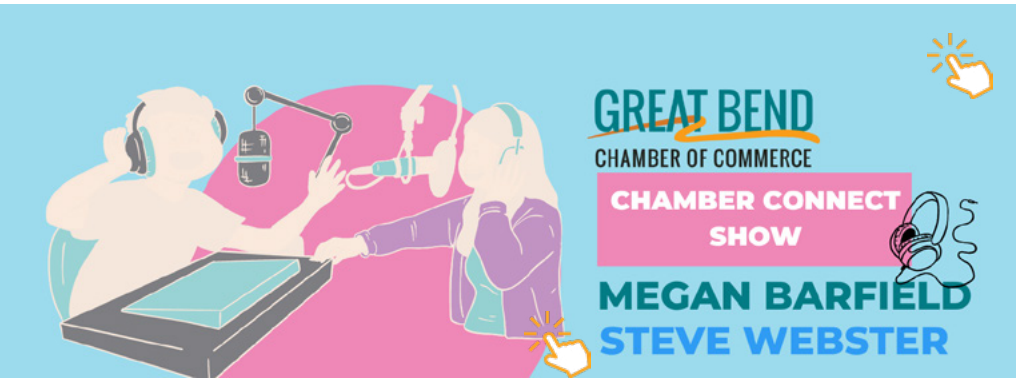
Fine and Performing Arts Coordinator and Dance Instructor Danika Bielek said Barton is very fortunate to have such a talented musician on the staff.

"Playing an instrument is such a great thing for people to do, and we couldn't ask for a better instructor," she said. "We're so happy to have Aleia as part of the Barton family and want to remind everyone that these classes are for anyone of any age. You don't have to be a music major attending Barton to enjoy learning a new skill. It's a great way to release stress and connect with people."

For more information or to enroll, visit music.bartonccc.edu or contact Gonzalez at gonzaleza@bartonccc.edu.

Chamber Connect Show: CEO Megan Barfield

Listen to this month's Chamber Connect Show with Eagle Radio's Steve Webster and Great Bend Chamber of Commerce Ceo Megan Barfield that aired July 6th, 2023.



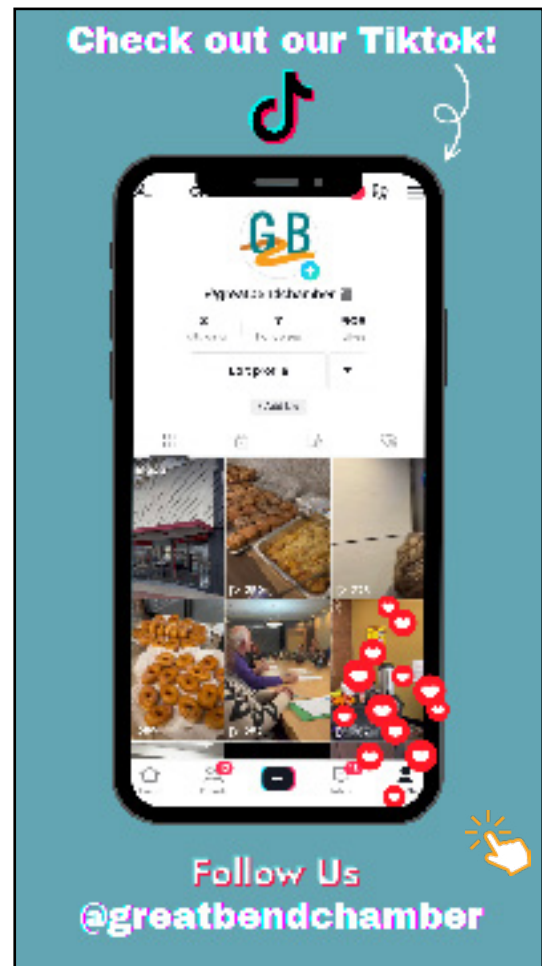
Are You Tired of Slow or No Internet?



Why should you participate?

The modern world operates online – which makes it incredibly important to ensure everyone has access to reliable broadband internet. Don't let Kansas fall behind. Take the quick speed test at broadbandks.com to help develop decide where infrastructure resources need to be upgraded.

The test helps Kansas Office of Broadband Development (KOBDD) understand the quality of broadband or internet service in your home compared to what you are currently paying for. "Access to high-speed internet in today's economy isn't a luxury, it's a necessity" – Governor Laura Kelly



Get Ready for the 11th Annual Party at the Park!

GREAT BEND, KS

11TH ANNUAL Party in the Park

9 AM	DOZEFEST MUD VOLLEYBALL
9AM -1PM	POP UP ADVENTURE PLAYGROUND FOR ALL AGES
9:30-11 AM	PAINT IN THE PARK-ROCK SNAKE PAINTING
10 AM	KIWANIS WET/DRY PARADE ON 17TH ST. TERRACE
11AM - 12:30PM	NERF WARS
11-4 PM	OPTIMIST KIDS FUN ZONE
11-4 PM	AIRBRUSH TATTOOS
11-5 PM	SHIFTERS CAR SHOW
11:15 AM	ANYTHING THAT FLOATS RACE
NOON	LUNCH WITH VENDORS
1:30-3 PM	NERF WARS
2 PM	FIRST KANSAS BANK MONEY PIT
3PM	CUP COMPETITION VARIOUS AGES
3:15 PM	CORNHOLE CHECK IN TIME
4 PM	CORNHOLE TOURNAMENT
6 PM	GATES OPEN FOR CONCERT
6-9 PM	CONCERT PHOTOBOOTH
6:15 PM	THE HEATHENS
8 PM	ULTIMATE GARTH BROOKS TRIBUTE
10 PM	FIREWORKS
10:30 PM	HOMEBREW

SATURDAY, AUGUST 12, 2023
VETERAN'S MEMORIAL PARK

YP BARTON COUNTY
 Young Professionals
 LEAD. NETWORK. VOLUNTEER.

FALL FEST

SAVE THE DATE!
 OCTOBER 8TH, 2023
 LONG'S PUMPKIN PATCH

Hosted by:
 THE UNIVERSITY OF KANSAS HEALTH SYSTEM

First Annual Grown-Up Spirit Week Successful Over Multiple States



Grown-Up Spirit Week is an annual campaign organized by Marketing Maven Consulting in Great Bend, Kansas, aimed at boosting workplace morale through fun activities. The event features daily themes like Pajama Day, Decades Day, Sports Day, and more. Participants enter as teams or individuals for a chance to win exciting prizes, including Amazon Gift Cards, gourmet treats, and even a free animated marketing video for their company. The 2023 Grown-Up Spirit Week saw over 30 teams from four states and seven cities joining in the fun.

Heartland Farms emerged as the Best Overall Team Winner, and individual winners included Mary Smith-Dumler, Yesenia Garcia, and Karen Stewart. The success of the event has spurred plans for the 2024 Grown-Up Spirit Week, scheduled for April 22 - 26, 2024. Marketing Maven Consulting hopes to expand the event's reach to more cities and states, fostering camaraderie and employee engagement in workplaces across the country.

To stay updated on the upcoming event and submit theme suggestions, visit www.grownupspiritweek.com. Employers, teams, and individuals are encouraged to follow Grown-Up Spirit Week on social media for all the latest updates and exciting announcements.



Rosewood Services Members Learn Advocacy at State Conference

Seventeen members of Rosewood Services, accompanied by four sponsors, attended the Self Advocate Coalition of Kansas Conference in Wichita. This marked the largest group Rosewood has ever brought to the annual conference, which centered around the theme "Taking Care of Business."

The conference, held from June 30 to July 2, provided individuals with developmental disabilities a chance to connect, learn from experts, and attend workshops. Rosewood's attendees, many of whom are part of the Rosewood Miracle Workers AKTION Club, found the experience empowering and gained leadership insights. During the conference, Frankie Pelster, Rosewood's sponsor for the AKTION Club, was honored with the "Barbara Bishop Support Staff of the Year Award," receiving support and recognition from her colleagues. Sessions like "Legislative Advocacy" resonated with some of the attendees, with members expressing interest in furthering their leadership training. James West, a participant, even had the opportunity to share his poem "Advocating" at the closing ceremony, earning praise from presenters.

The conference also provided opportunities for fun activities, including a patio party, dance, bingo, swimming, and a boat ride. However, it was the late-night fire-pit gatherings that left a lasting impact on the attendees, fostering fellowship and connections in a relaxed and enjoyable setting. Overall, the SACK Conference proved to be an enriching experience, motivating Rosewood's members to take on more leadership roles and make a positive difference in their community throughout the year.

Outlook Business Journal

A monthly publication of the



1125 Williams,
Great Bend, KS 67530
Phone: 620-792-2401
Fax: 620-792-2404

Web address: www.greatbend.org

for a complete list of staff and board members [CLICK HERE](#)



**CONNECT ENGAGE PLAY
WITH "THE REC"**

**AFTER SCHOOL PROGRAMS
KIDS DAY OUT CAMPS
FITNESS CLASSES
PICKLEBALL CLINICS
AND MORE**

**ENROLL
SEPT. 18**

Great Bend Rec 1214 Stone Street 620.793.3755 greatbendrec.com

Ribbon Cuttings!



T & L Fireworks Celebrates 53 Years in Business

T & L Fireworks, a leading provider of high-quality fireworks in Central Kansas, proudly marked the commencement of their fireworks season with a ribbon cutting ceremony in collaboration with the Great Bend Chamber of Commerce. This event took place on June 27th, marking the beginning of their 53rd year in business. The ribbon cutting ceremony was attended by family members, friends, and dedicated employees of T & L Fireworks, who all gathered to celebrate the milestone achievement. Independence Day has just concluded, and T & L Fireworks experienced yet another successful season, offering an extensive range of fireworks products to their valued customers. With their commitment to providing affordable prices, excellent quality, and a wide selection, T & L Fireworks once again ensured the safe and enjoyable celebration of the Fourth of July for the communities they serve.



GB Appliance Celebrates 25th Anniversary

Great Bend Appliance, Furniture & SleepSource proudly announces its 25th year of successful business operations, marking a significant milestone for the company. Founded on July 20th, 1998, by owners Dale and Sherry Pruter, along with Eric Rostine, the business has grown and flourished over the years, providing top-notch products and services to its valued customers.

From its modest beginnings with just Dale & Sherry and two employees, Great Bend Appliance has expanded its offerings and floor space significantly. Initially covering 1,300 square feet, the business quickly grew to 2,000 square feet with the addition of mattresses. In 2002, they introduced the 1,600 square foot SleepShopper showroom, and in 2004, they opened the England Custom Comfort Center, a 6,000 square foot addition to offer furniture. Next year, they will be celebrating 20 years of excellence on the furniture side. As a comprehensive home furnishing destination, Great Bend Appliance, Furniture & SleepSource caters to various needs, including appliances, mattresses, furniture (including lift chairs), TV's, vacuums, infrared heaters, and Traeger grills. They also specialize in selling mobility scooters, ensuring that their customers find everything they need to furnish their homes conveniently under one roof.

With a dedicated team of 21 employees, Great Bend Appliance takes immense pride in offering top-notch service, delivery, and maintenance support to its customers. Over the years, they have built a strong customer base primarily within a 60-mile radius, serving the community of Kansas with exceptional care and dedication. As they embark on the next chapter of their journey, Great Bend Appliance, Furniture & SleepSource remains committed to providing exceptional products and services to their loyal customers and looks forward to serving the community for many more years to come.

**ARE YOU GROWING
YOUR TEAM?**

central kansas
JOBS

Post for FREE:
www.CentralKansasJobs.com

Ribbon Cuttings!



Marketing Maven Celebrates Grand Opening in New Office Space

Marketing Maven Consulting, a central Kansas-based brand management and design firm, celebrated the grand opening of their new office at 3108 10th Street, Great Bend, Kansas. The event featured a ribbon-cutting ceremony hosted by the Great Bend Chamber of Commerce. Founder and owner, Rachel Mawhirter, expressed excitement about the firm's growth from a side hustle in 2013 to a full-time operation with five employees. The new location offers increased visibility and room for future expansion.

Marketing Maven's team includes creative professionals in Great Bend, Hays, Manhattan, and Kansas City, serving clients in diverse industries such as healthcare, construction, agriculture, technology, and more. They offer outsourced marketing services and handle brand development projects like website design, video production, photography, and graphic design.

Local contractor, Just in Time Remodeling, completed a cosmetic update before the move, and Mark's Custom Signs installed new signage. The office boasts 600 square feet of open concept office and meeting space, equipped with virtual meeting capabilities to accommodate clients across the Midwest.

The prime location on 10th Street, with over 15,000 daily passersby, provides excellent visibility. Photos of the grand opening are available on Marketing Maven's social media. Anyone interested in their services can visit the office during business hours or find more information at www.HireAMaven.com.



Edward Jones - Jim Vopat Celebrates 25 Years in Business

On June 29th, 2023, Jim Vopat cut the red ribbon to mark his 25th year in business. Jim has been a cornerstone of financial expertise and guidance in Great Bend for the past 25 years. His commitment to providing personalized and comprehensive financial solutions has earned him the trust and respect of his clients and the community at large. As an Edward Jones financial advisor, Jim Vopat adheres to the firm's core values of personalized service, long-term relationships, and putting clients first. Throughout his career, he has strived to understand his clients' unique financial goals, offering tailored strategies to help them achieve their dreams. To reach Jim you can visit <https://www.edwardjones.com/us-en/financial-advisor/jim-vopat/contact> for more information.

GREAT BEND
CHAMBER OF COMMERCE

WELCOME
TO OUR NEWEST
CHAMBER MEMBERS

ALAN RIEDEL
Retired

BARTZ CONSTRUCTION

Jeromy Bartz, Owner
jbartz@bartzconstruction.com
(620)804-3426
1455 K Road
Larned, KS
Construction

ROOFMASTERS ROOFING & SHEET METAL CO., INC.

Luke Haines, Rep
hr@roofmastersroofing.net
www.roofmastersroofing.net
(620) 282-4002
705 Harrison
Great Bend, KS
Hays, KS
Roofing Contractors

SUMMIT ROOFING

Kyle Walter, Rep
kyle@summitroofgroup.com
(620) 603-4505
1515 Odell St.
Great Bend, KS
Construction

PASSAGES OF HOPE COUNSELING CENTER

Joanne Wondra, Rep
joanne@passagesofhopecounseling.net
passagesofhopecounseling.net
(620) 796-2788
2008 11th St.
Great Bend, KS
Counseling

JOIN NOW



1921



YEARS 2021



CELEBRATING OVER **57 YEARS**
OF SERVING PEOPLE WITH
DEVELOPMENTAL DISABILITIES!

There is a Difference.

EARLY EDUCATION
CASE MANAGEMENT
DISABILITY SUPPORTS
RESIDENTIAL ASSISTANCE
COMMUNITY EMPLOYMENT
RECYCLING & MANUFACTURING
GENERAL PUBLIC TRANSPORTATION
& MUCH MORE!

620-792-1325
WWW.SUNFLOWERDIV.COM



Every Thursday! Doors open at 9am, program at 9:30am

Can't make it in person? Watch on the Chamber's Facebook Page or YouTube Channel

August 3rd

NEXTLINK

104 S Patton Rd.

NextLink Internet is a regional internet service provider (ISP) that offers high-speed fixed wireless and fiber internet services to residential and business customers in several states in the United States.

NextLink provides internet connectivity through a network of towers and fiber-optic infrastructure, delivering reliable and fast internet access to rural and underserved areas where traditional cable or DSL services may be limited or unavailable.

August 10th

YERALDI'S BOUTIQUE

1908 Broadway Ave.

Yeraldi's Boutique es una tienda para mujeres con estilo occidental que ofrece ropa, accesorios y calzado de moda y elegantes. Con una selección cuidadosamente curada de piezas inspiradas en el oeste, que incluye mezclilla, cuero, vestidos bohemios y más, la boutique atiende a las cowgirls modernas de todas las edades. Su colección también incluye cinturones llamativos, sombreros de cowgirl, joyería de turquesa y una variedad de botas y botines. La tienda se enorgullece de brindar un excelente servicio al cliente para ayudar a los clientes a encontrar el atuendo perfecto que refleje su estilo y personalidad única.

Yeraldi's Boutique in Great Bend, KS, is a Western women's store offering trendy and stylish clothing, accessories, and footwear. With a curated selection of Western-inspired pieces, including denim, leather, bohemian dresses, and more, the boutique caters to fashion-forward cowgirls of all ages. Their collection also includes statement belts, cowgirl hats, turquoise jewelry, and a variety of boots and booties. The store prides itself on providing excellent customer service to help customers find the perfect outfit to reflect their unique style and personality.

August 24th

EDWARD JONES - KRIS SUNDAHL / ALZHEIMER'S ASSOCIATION

Perkins Meeting Room (2920 10th St.)

The Alzheimer's Association is a non-profit organization providing support and resources for individuals and families affected by Alzheimer's disease and other dementias, while Edward Jones - Kris Sundahl offers personalized investment and wealth management services to individual investors, focusing on building long-term relationships and custom investment strategies.

August 31st

BANK OF THE PLAINS

1000 Adams St.

Welcome to Bank of Plains in Great Bend, KS, your trusted local bank dedicated to serving the community with exceptional financial solutions. As a community-oriented bank, we take pride in providing personalized banking services to individuals, families, and businesses alike. Our experienced team is committed to helping you achieve your financial goals by offering a wide range of banking products and services, including checking and savings accounts, loans, mortgages, and investment options.



3307 10th Street • Great Bend, KS 67530

McDonald's

is providing coffee for Chamber of Commerce coffees.

HIGHLIGHTED AUGUST EVENTS IN GREAT BEND

3...Chamber Coffee: NextLink, 104 S Patton Rd., Doors open at 9am, Program at 9:30am

5...UWCK Kick off, Columbus Club, 5-10 pm

6...BCYP Family Swim Night, Hoisington City Pool, 7-9 pm

7...Hamburger Night, American Legion Post 180 (1011 Kansas Ave.), 5:30 - 7:00 pm

10...Chamber Coffee: Yeraldi's Boutique, 1908 Broadway Ave., Doors open at 9am, Program at 9:30am

10...New Teacher Mixer, Dry Lake Brewing, 4 - 6 pm

11...Perseid Meteor Shower Watch Party, Kansas Wetlands Education Center, 8:30 - 10:30 pm

11...VFW Post 3111 Karaoke Night!

12...11th Annual Party in the Park, Vets Park, 9 am - 10:30 pm

17...2023 Business Showcase, Panther Activity Center (PAC), 8:30 - 10:30 am

19...Laundry Love, Discount Laundry (924 Jefferson St.), 10 - 2 pm

24...Chamber Coffee: Edward Jones - Kris Sundahl / Alzheimer's Association, Perkins meeting room (2920 10th St.), Doors open at 9am, Program at 9:30am

25...Fridays on Forest, Forest St. (Between Williams & Main St.), 5 - 9 pm

25...American Legion Fried Chicken Friday, Argonne Post 180 (1011 Kansas Ave.), 5:30 - 7 pm

25...Military and First Responders Night Out, Dropping 22 (916 Williams St.), 6-8 pm

26...44th Annual Big Benefit Auction, Great Bend Events Center, 5:30 pm

28...Women of the Southern Colonies, Barton County Historical Society, 7-8 pm

31...Chamber Coffee: Bank of the Plains, 1000 Adams St., Doors open at 9am, Program at 9:30am

**NEW?
SUBMIT
YOUR
NEWS HERE!**

SCAN ME

**NO FORMAL PRESS RELEASE? NO
COMMUNICATION DEPARTMENT? NO
PROBLEM! SIMPLY SCAN THE QR CODE AND
LET US KNOW WHAT'S GOING ON IN YOUR
BUSINESS AND WE'LL DO THE REST!**

**GREAT BEND
CHAMBER OF COMMERCE**

Recurring Events:

Great Bend City Council Meetings, 1st & 3rd Mondays, 1209 Williams St., 6:30pm

Barton County Commission Meetings, Every Wednesday, Barton County Courthouse, 1400 Main St, Rm 106, 9am

Can't make it to the Weekly Chamber Coffee, watch online: [The Chamber's Facebook Page](#) or [YouTube Channel](#)

Visit greatbend.org/events/calendar for a full list of great events taking place throughout the month!



PRINT & MAIL OR REGISTER ONLINE
WWW.GREATBEND.ORG

Open to every level of golfer, we invite you to join us for an invigorating day of business networking, socializing and sporting fun!

Date: Friday, September 22, 2022

Lake Barton Golf Club

Registration: 9:30 a.m. | Shotgun Start: 10 a.m.
Mulligans, hole contests, drink carts & lunch
Included with golf registration!

Hole Sponsor: Our business would like to support the 2023 Chamber Golf Tournament

Business Name _____
Contact Person _____
Address _____
Telephone _____
E-mail _____

Hole Sponsorship Includes:

- Signage on a hole

Interested in other Sponsorship Opportunities?

- Call the Chamber for more information: 620-792-2401

We are in as a Hole Sponsor - \$150.00

Check Enclosed Bill My Company

Team Entry Form - \$450.00 Team Registration | \$115.00 Individual Registration

GOLFER #1
Name: _____
Email: _____
Bringing golf cart? Y / N

GOLFER #2
Name: _____
Email: _____
Bringing golf cart? Y / N

TEAM NAME:

Contact Name: _____

Phone: _____

Number of golf carts needed? _____

GOLFER #3
Name: _____
Email: _____
Bringing golf cart? Y / N

GOLFER #4
Name: _____
Email: _____
Bringing golf cart? Y / N

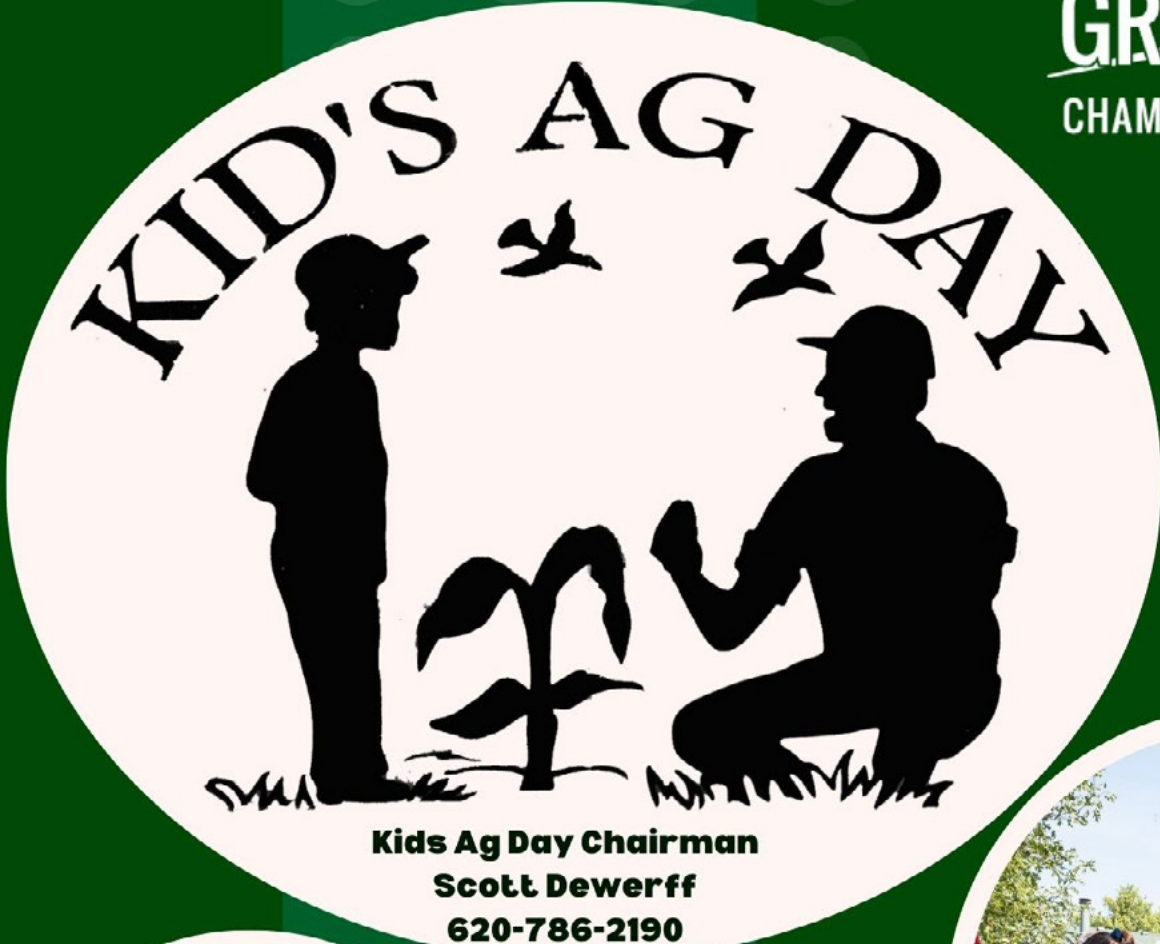
Check Enclosed

Bill My Company

Mail completed forms and payment to:
Great Bend Chamber of Commerce - Attn: Edith Solorzano
1125 Williams, Great Bend, KS 67530

COMPLETED REGISTRATIONS MUST BE RECEIVED BY FRIDAY, SEPT. 8TH

Proceeds underwrite valuable member services & programs from the Great Bend Chamber of Commerce including: Central Kansas Jobs, Barton County Young Professionals, Kids Ag Day, and more.

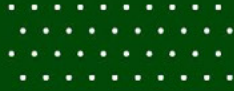


**HELP SUPPORT THE
29TH ANNUAL
KIDS AG DAY!**

YOUR CONTRIBUTION WILL HELP THIS IMPACTFUL DAY CONTINUE TO HAPPEN YEAR AFTER YEAR FOR HUNDREDS OF STUDENTS.



UNLEASH THE POTENTIAL OF AGRICULTURE



The 29th Annual Kids Ag Day program, hosted by the Ag-Business Committee of the Great Bend Chamber of Commerce is happening on Wednesday, September 6th, and aims to provide local fourth-grade students with a deeper understanding of the agriculture industry and its crucial role in our community's economy.

Kids Ag Day has been a resounding success over the years, engaging hundreds of students from both public and private schools in Claflin, Hoisington, Ellinwood, Otis-Bison, Pawnee Rock, and Great Bend. With your support, we can continue to provide a valuable educational experience for over 350 students, helping them to develop a new appreciation for agriculture and its significance.

**HELP SUPPORT KIDS AG DAY
WITH YOUR MONETARY
DONATION OR THROUGH
VOLUNTEERING.**



*Volunteers & the business community
make it happen*



**QUESTIONS?
CALL 620-792-2401
OR VISIT GREATBEND.ORG**



DONATIONS CAN BE MAILED TO:
Great Bend Chamber of Commerce
c/o Kids Ag Day
1125 Williams St.
Great Bend, KS 67530